

Wright Manley

CELEBRATING 150 YEARS

1861

2011

AUCTIONEERS

Fine Winter Antiques Auction

Thursday
1st December
2011
at 10.30am

Enquiries to:
**WILLIAM
T WITTER MRICS**





Wright Manley

— AUCTIONEERS • Established 1861 —

FINE ART & ANTIQUE VALUERS, CHARTERED AUCTIONEERS, LAND & ESTATE AGENTS

RESULTS FROM OUR RECENT FINE ART AUCTION



LOT 515 A FINE VICTORIAN
CABINET OF STUFFED BIRDS
WITHIN A DOMED GLAZED
CABINET - Sold for £2,200



LOT 784 AN EARLY 18TH
CENTURY OAK TRIDARN -
Sold for £3,200



LOT 22 - AN 18CT WHITE GOLD
THREE STONE SAPPHIRE AND
DIAMOND RING, MODERN -
Sold for £1,800



LOT 285 A PAIR OF VICTORIAN
BOHEMIAN TYPE LUSTRES -
Sold for £1,250



LOT 831 A GOOD GEORGE III OAK AND MAHOGANY
CROSSBANDED LANCASHIRE DRESSER - Sold for
£3,400



LOT 172 A PAIR OF ATTRACTIVE SILVER
AND TORTOISESHELL CANDLE STICKS -
Sold for £1,000

Our next Fine Art Sale will be in Spring, 2012

Please contact

Bill Witter or Lillian Rogerson at Wright Manley on:
01829 262150 or email: billwitter@wrightmanley.co.uk



WRIGHT MANLEY

AUCTIONEERS



Established 1861

FINE WINTER ANTIQUES AUCTION

Thursday 1st December, 2011

at 10.30 am

ORDER OF SALE

Over 850 Lots, including the contents of Edgeley, Chester, Jewellery & Watches 1-100,
Silver & Plate 105-193, Metal Ware 200-223, Glassware 225-230, Beswick 235-245,
Ceramics 250-306, Oriental 316-320, Collectors 321-429, Books 430-484,
Prints 490-537, Watercolours 543-578, Oil Paintings 581-613, Barometers 620,
Mantel Clocks 625-639, Wall Clocks 640-642a, Longcase Clocks 643-657,
Oak Furniture 658-724, English Furniture 727-874, Carpets 875

Entry by Catalogue

VIEWING

Sunday 27th November	10.00am-4pm
Monday 28th November	10.00am-4pm
Tuesday 29th November	10.00am-4pm
Morning of sale	from 8.30am

Front Cover – Lot 269 Back Cover – Lot 112

Purchase and Delivery

Please ensure that your bids are left with reception as early as possible and at least one hour before the sale. Telephone lines must be booked no later than 2pm day prior to sale; otherwise we can not guarantee a line.

All items to be paid and cleared by 12 noon Saturday 3rd December, 2011

Catalogues from and Enquiries to:

William Witter MRICS
Beeston Castle Salerooms
Tarpurley, Cheshire, CW6 9NZ
Tel: 01829 262150 Fax: 01829 261829
Email: billwitter@wrightmanley.co.uk
Web: www.wrightmanley.co.uk

Catalogues £5 (£6 by post)

This sale is subject to the conditions of business on display in the saleroom

FORTHCOMING ANTIQUE & GENERAL SALE

THURSDAY 8th December, 2011

Viewing Wednesday 7th December, 2011

JEWELLERY & WATCHES



Lot 1

1 - A PEAR SHAPED DIAMOND PENDANT, approx 1.00cts surround by 14 small eight cut diamonds dropping from a circular cluster mount with 6 small diamonds on a 15" silver chain. See illustration £800 - 1000
Sold on behalf of the Macmillan Nursing.

2 - A 9CT PEARL AND WHITE STONE CLUSTER RING circular cluster central cultured pearl surrounded by twelve white stones. £90 - 100

3 - A BLUE TOPAZ AND 14CT YELLOW GOLD ETERNITY RING tension set. £150 - 200

4 - A RHODALITE GARNET FULL ETERNITY RING set in 14ct white gold, tension set. £150 - 200

5 - A FINE CEYLON SAPPHIRE AND DIAMOND RING in 18ct white gold, oval sapphire 2.10cts, eight small brilliant cut diamonds set on each shoulder. £1000 - 1200

6 - AN AMETHYST SINGLE STONE RING rectangular stone approx. 9mmx7mm set in 14ct yellow gold. £225 - 275

7 - A DIAMOND RING with eleven bagette diamonds five on each shoulder with four small brilliant cut diamonds on each corner of central stone, set in 18ct white gold. £500 - 600

8 - A SINGLE STONE SAPPHIRE RING the rectangular cut stone 1.20cts, claw set in 18ct white gold. £500 - 600

9 - A RECTANGULAR SAPPHIRE SINGLE STONE RING 0.62cts set in platinum £600 - 800

10 - A SINGLE STONE SQUARE PINK RUBY RING 1.27cts set with six small diamonds set on each shoulder, in 18ct white gold. £700 - 900

11 - A FINE CIRCULAR RUBY AND DIAMOND RING 1.27cts with six bagette diamonds on each shoulder set in 18ct white gold. £1000 - 1200

12 - A FINE AQUAMARINE AND BAGETTE DIAMOND RING aquamarine 3.35cts with two bagette diamonds set each side, further five small brilliant cut diamonds on each shoulder all set in 18ct white gold. £1200 - 1500



Lot 13

13 - AN OVAL EMERALD AND DIAMOND THREE STONE RING set in 18ct white gold, oval emerald 1.46cts and two brilliant cut diamonds total weight 0.42cts. See illustration £1500 - 2000

14 - A PAIR OF SINGLE STONE DIAMOND EARRINGS circular brilliant cut diamonds, claw set in 18ct white gold with posts and butterfly fittings, total weight 0.46cts. See illustration £350 - 450



Lot 14

15 - AN OVAL AMETHYST AND DIAMOND CLUSTER RING fine amethyst 1.60cts surrounded by sixteen brilliant cut diamonds, clarity VS/1, 3.5mm diameter each all set in 18ct yellow and white gold. See illustration £1200 - 1800



Lot 15

16 - A FINE QUALITY OVAL CITRINE AND DIAMOND CLUSTER RING citrine approx 7.50cts surrounded by eight small cut diamonds with two oval split shoulders studded with small diamonds total diamond weight 0.76cts. £700 - 1000



Lot 18

17 - A PEAR SHAPED LEMON CRYSTAL 12.80CTS AND DIAMOND 0.42CTS CLUSTER RING, set in 14ct white gold with seven small diamonds set on each shoulder. £400 - 600

18 - A PEAR SHAPED AMETHYST AND DIAMOND CLUSTER RING amethyst 12.80cts surrounded by small eight cut diamonds and seven on each shoulder all set in 14ct white gold. See illustration £400 - 600

19 - A PAIR OF SINGLE STONE DIAMOND EARRINGS circular brilliant cut diamonds, total weight 1.42cts, claw set in 18ct white gold with posts and butterfly fittings. £2400 - 2800

**ENTRIES OF JEWELLERY
ARE NOW BEING
ACCEPTED FOR OUR
FINE SPRING ANTIQUES
AUCTION**

20 - A CIRCULAR BLUE TOPAZ AND DIAMOND CLUSTER RING topaz 8.95cts surrounded by eight cut diamonds totalling 0.66cts all set in 14ct white gold. £300 - 500

21 - A FINE CUSHION SHAPED CITRINE AND DIAMOND CLUSTER RING citrine 5.00cts surrounded by small brilliant cut diamonds and four on each shoulder all set in 18 ct yellow gold. £400 - 600

22 - A CULTURED PEARL AND DIAMOND CLUSTER RING central pearl 7mm diameter surrounded by eleven circular old cut diamonds 0.75cts total, all set in 18ct yellow gold. £350 - 550

23 - A SINGLE STONE MARQUISE DIAMOND RING approx 0.55cts, claw set in platinum with triple wire shank. £700 - 1000

24 - A YELLOW GOLD UNHALLMARKED CURB LINK BRACELET with seven blister pearl and rub drops, total weight 11.6grams. See illustration £200 - 300



Lot 24

25 - A FULL VICTORIAN SOVEREIGN 1890 £180 - 220

26 - A CIRCULAR DIAMOND OPEN WORK BROOCH with central rose cut diamond set anchor, surrounded by eight small rose cut diamonds set in a double fine border, 22mm diameter. See illustration £200 - 300

27 - TWO SILVER BROOCHES one circa 1880 the other circa 1890, also a small crop brooch, 1gram. (3) £40 - 60

28 - A LOZENGE SHAPED MARCASITE RING CIRCA 1890. A lapis lazuli pendant on chain. A silver heart shaped locket on chain and a gold plated heart shaped padlock clasp (worn). (4) £40 - 60

29 - AN EMERALD AND DIAMOND LINE BRACELET CIRCA 1990. Claw set oval emeralds interspersed by pairs of small uniform peg set eight-cut diamonds (total estimated weigh 0.40ct). Snap with hobnail thumb piece. £400 - 600

30 - AN 9CT GOLD EMERALD AND DIAMOND RING BIRMINGHAM 2005 and a pair of coral and cultured pearl drop earrings circa 1988. (2) £90 - 150



Lot 26



Lot 8 June Sale - A pink Sapphire and Diamond Cluster Ring sold for £1,400.

31 - A PAIR OF IOLITE AND DIAMOND DROP EARRINGS AND MATCHING PENDANT ON BRAZILIAN CHAIN CIRCA 2005, also a 9ct white gold graduated iolite and diamond ring London 2005. (3) £180 - 250

32 - A PAIR OF GEMSET CLUSTER EARRINGS CIRCA 1985 and a claw set and graduated gemset ring. (2) £40 - 60

33 - AN 18CT GOLD THREE STONE DIAMOND RING LONDON 2000. Slightly graduated claw set stones (central stone estimated top weigh 0.15ct and each of the stones on either side 0.12ct). Shank with millennium hallmark. £200 - 400

34 - AN OPAL, DEMANTOID GARNET AND DIAMOND BROOCH CIRCA 1910. Central oval opal with surround of small uniform demantoid garnets and an outer border of small old cut diamonds in the form of a wreath. Suspended from a bar brooch of later date. **Withdrawn from Sale**

35 - A CABOCHOON AMETHYST RING WITH MATCHING EARRINGS AND PENDANT ON CHAIN MODERN. Plain borders. (4) **Withdrawn from Sale**

36 - A DECORATIVE DIAMOND, RUBY AND MOONSTONE BROOCH MODERN. Two coloured stylised design with graduated stones mounted in rub over settings. **Withdrawn from Sale**

37 - A NORWEGIAN SILVER AND BLUE ENAMELLED BUTTERFLY BROOCH MODERN, a single stone turquoise ring circa 1890 and a turquoise and enamel pendant circa 1905. £80 - 150

38 - A 9CT GOLD CURB LINK BRACELET 29gms £180 - 220

39 - A PAIR OF 9CT GOLD MASONIC CUFFLINKS a similar pendant and ring 15gms gross £150 - 180

40 - A LARGE OVAL GOLD MOUNTED SHELL CAMEO £30 - 50

41 - A DIAMOND OVAL 18 LINK 18CT YELLOW GOLD BRACELET each link set with 10 small diamonds approx 2mm diameter, 180 diamonds in total. Total weight approx 15gms £300 - 400

42 - A DIAMOND SIXTEEN STONE HALF ETERNITY RING stamped 9K £150 - 200

43 - A DIAMOND THREE ROW TARGET STYLE CLUSTER RING set in 9ct white and yellow gold with 13 small diamonds set on each shoulder with wide graduated shank, stated 1ct, total diamond weight stamped in shank 1.00ct. £150 - 250

44 - A CONVEX CAMEO depicting sailing ships in 9ct gold, scroll and bead border and safety chain, also a garnet and 9ct bar brooch, a pair of silver gilt cuff links and a silver twist chain. £60 - 80

45 - A MARQUISE SHAPED AMETHYST PENDANT SEED PEARL AND ONYX STICK PIN rectangular synthetic corundum 9ct gold dress ring and an oval red stone and marcasite dress ring. £40 - 60

46 - A RUBY AND DIAMOND BOAT SHAPED 9CT CLUSTER RING with eight cut diamonds surrounded by thirteen rubies. £80 - 100

47 - AN OVAL AQUAMARINE DROP PENDANT SET IN WHITE METAL, Aquamarine measures approx 5.00cts on a 16" bar and link chain with box snap fastener. £180 - 250

48 - A 9CT GOLD AND OVAL AMETHYST SINGLE STONE DRESS RING. £60 - 80

49 - AN 18CT GOLD AND RECTANGULAR CUT DARK CITRINE RING (estimated weight 10cts). £100 - 120

50 - AN 18CT GOLD SAPPHIRE AND DIAMOND THREE STONE RING, central sapphire estimated to weigh 0.70ct with two smaller uniform old cut diamonds mounted on each side, each estimated to weigh 0.20ct. £270 - 350

51 - AN AMETHYST CUSHION SHAPED BROOCH, stone approx 13mm, also a kite shaped pendant with amethyst and seed pearls £30 - 40



Lot 56



Lot 57

- 52 - A RUBY AND DIAMOND STICK PIN**, mounted in a swirl setting. £40 - 60
- 53 - A 9CT AND DIAMOND RECTANGULAR LINKED BRACELET**. each link set with small stones. £140 - 160
- 54 - AN OPEN DIAMOND CLUSTER RING CIRCA 1900**. Fine open work mount set with old cut stones. £100 - 120
- 55 - A DIAMOND CLUSTER RING**. Thirteen small brilliant cut stones mounted in a rectangular setting. £130 - 170
- 56 - A DIAMOND THREE STONE 18CT GOLD RING**, centre old cut diamond approx 0.90cts, two outside diamonds approx 0.80cts each white claw set yellow gold split shoulders and shank stamped 18ct, est colour H/I, est. clarity VS2/Si1
See illustration £2800 - 3500
- 57 - A 9CT YELLOW GOLD SINGLE GRADUATED WATCH CHAIN** each link stamped 375 with swivel and T piece attached.
See illustration £450 - 650
- 58 - A GOLD SOVERIGN EDWARD VII, 1906** £200 - 300
- 59 - A GOLD SOVERIGN EDWARD VII, 1904** £200 - 300
- 60 - A GOLD SOVERIGN EDWARD VII, 1903** £200 - 300
- 61 - A GOLD SOVERIGN EDWARD VII, 1904** £200 - 300



Lot 63

62 - A GOLD HALF SOVERIGN VICTORIA 1897 £80 - 120

63 - A GENTLEMANS SINGLE STONE DIAMOND RING SHEFFIELD 1975, old cut diamond (estimated weight 1.70cts), mounted with bold claw settings, See illustration £1200 - 1800

64 - AN 18ct GOLD EMERALD and DIAMOND LATIN CROSS PENDANT, circa 1990. Total estimated weight of diamonds 0.20ct. Suspended from a small link chain. £60 - 80

65 - A SINGLE PEARL RING, PEARL BAR BROOCH AND PEARL PENDANT AND CHAIN. £30 - 50

66 - A TANZANITE AND DIAMOND THREE STONE RING CIRCA 2000. Central claw set cushion cut tanzanite (estimated to weigh 3cts) and with a claw set brilliant cut diamond on either side (each estimated to weigh 0.50ct).
See illustration £2000 - 2500



Lot 66

67-85 - SPARE LOTS

86 - A LADIES QUARTZ HEAVY SILVER BRACELET WATCH £50 - 70

87 - A HEAVY SILVER OPEN FACED POCKET WATCH, key driven, late Victorian, London hallmarked 1889. £40 - 60

88 - A 9CT YELLOW GOLD "WALTHAM" OPEN FACED POCKET WATCH white dial, Roman numerals, miniature sweep secondhand, 15 jewelled movement. See illustration £250 - 350

89 - A LADY'S BI-METAL QUARTZ PIAGET WRISTWATCH, Circa 1990. Circular opal dial with applied Roman numerals and associated bracelet of tapered design with alternate plain and brush finish. £100 - 150

90 - A LADY'S QUARTZ RAYMOND WEIL WRISTWATCH with ivory coloured dial and cabochon gemset winder. A bi-metal Lucerne gentleman's wristwatch with leather strap (buckle missing). (2) £30 - 40

91 - A SILVER OPEN FACED KEY DRIVEN POCKET WATCH, elaborate dial, Roman numerals, stamped on back of case "935", scroll engraved case back. £50 - 70



Lot 88

- 92 - A FULL HUNTER GOLD PLATED WALTHAM POCKET WATCH**, white dial Arabic numerals miniature sweep second hand, monogrammed back of case. £40 - 60
- 94 - A GENTLEMAN'S 9CT YELLOW GOLD "MARVIN REVUE" QUARTZ BRACELET WATCH**, rectangular gold dial milligrain gold bracelet with snap fastener. £600 - 800
- 95 - A GENTLEMAN'S JAEGER-LE-COULTRE WATCH** with miniature sweep second hand on an expanding steel bracelet. £40 - 60
- 96 - A GENTLEMAN'S STAINLESS STEEL OMEGA AUTOMATIC BRACELET WATCH**, screw down case back. £80 - 120
- 97 - A GENTLEMANS QUARTZ BI-METAL ROTARY WRISTWATCH MODERN.** White enamelled dial with applied baton numeral, quartered hours and date aperture at three o'clock. Associated display case and documentation. £60 - 80
- 98 - A GIANT KEY WOUND POCKET WATCH** Chester 1900 (dial cracked), a smaller example 1896 and a Swiss cased example. £30 - 50
- 99 - A LADIES 9CT GOLD BRACELET WRISTWATCH AND A SWISS SILVER CASE OPEN KEY WIND AND POCKET WATCH** £50 - 80



Lot 100

100 - A 9CT HALF HUNTER "LA PIAGET" POCKET WATCH, Birmingham hallmarked, also a 9ct bar linked Albert chain with "T" piece and mounted sovereign 1902, total weight approx 85 grams. £750 - 950

SILVER & PLATED WARE

- 104 - SIX OLD ENGLISH PATTERN TEA SPOONS, RICHARD FERRIS, EXETER** circa 1800, bowls with traces of gilding, 60 grams. £40 - 60
- 105 - A SILVER HUNTING HORN, LONDON 1948**, Swaine and Adeny, 185 Piccadilly, London, proprietors of Kohler & Son, engraved J Stanley from Geg DGHW, Essex Hounds 1945-1949, 102 grams. £150 - 200
- 106 - SIX GEORGE III OLD ENGLISH PATTERN TEA SPOONS** makers mark IP London 1785, initialled, 70 grams. £40 - 60
- 107 - A WOODEN MAZER BOWL** with silver rim, Chester 1909, 11cms diameter and a initialled shallow dish London 1935, 9½ cms wide and small baluster castor 100 grams £70 - 100
- 108 - A SILVER BACKED CLOTHES BRUSH AND HAIRBRUSH** each stamped with ribbon tied blooms £10 - 20
- 109 - FOUR PACKS OF BRITAINS FIRST DECIMAL COINS**, four half crowns, seven florin's and one shilling, pre 1919; 41 half crowns, 177 florin's and 126 sixpence's, 1920-1946, a quantity of bronze threepenny bits and a small collection of modern crowns. £750 - 1000
- 110 - A MOTHER OF PEARL HANDLED FOLDING FRUIT KNIFE AND COMPANION FORK** Sheffield 1911, the fork case with plaque inscribed J Bourne joining to the knife by bayonet fitting and a second similar pair with fruit knife and toothpick Sheffield 1880, four initialed teaspoons, 1912, a pair of initialed bright cut teaspoons, London 1895, three others Stephen Adams 1792 175gms, six coffee spoons and a pair of tongs Sheffield 1907, cased and a silver handled cased shoe horn and button hook Birmingham 1910, 100 gms £50 - 70
- 111 - TWO NORWEGIAN FOLK SPOONS** a miniature coronation anointing spoon, a pair of broken tongs, pair of fiddle pattern tongs, Sheffield 1901 and six napkin rings 170 gms £70 - 90
- 112 - A FRENCH BUTTERFIELD DIAL BY N BION, PARIS CIRCA 1700**, octagonal hour scale, the centre ones oval, folding gnomon with bird pointer engraved for 40-60 degrees, the compass with simple pointer engraved in French, the reverse with the latitudes of mainly French towns, original red velvet lined fitted case, See illustration £1200 - 1800



Lot 117

113 - A PAIR OF GEORGE III PLAIN SUGAR TONGS London 1792, initialed and crested, a pair of sugar grips Birmingham 1902, another pair of tongs, Sheffield 1904, a cased set of six figure teaspoons, Birmingham 1896 and a pair of plated tongs 165gms. £60 - 80

114 - A WATCH CHAIN, INITIALLED CARD CONTAINER Chester 1897, propelling tooth pick and shield shaped fob, a second watch chain and fob with a vesta case Birmingham 1908, two base metal vesta cases and a Swiss cased open faced key wound Omega pocket watch 115gms £80 - 120

115 - AN OPENWORK THREE PIECE CRUET SET, the sides pierced with pales, complete with spoons and blue glass liners, cased and a second cased small three piece cruet set, plain, liners, spoons and case 205gms and shaped oval small casket with silver tortoiseshell hinged lid, on four feet Birmingham 1913 9.5cms wide £100 - 150

116 - A COLLECTION OF BRONZE AND COPPER COINAGE including 79 1918 H pennies, 32 1918 K N pennies, Charles II, William and Mary, William III, twelve halfpennies, nine farthings; George I four halfpennies, eight farthings; George II nine halfpennies, seven farthings; George III twenty halfpennies, five farthings, 18 later examples; an 1854 penny, an 1964 (worn) penny and a small quantity of silver threepences. £50 - 100

117 - AN INTERESTING GERMAN HUNTSMAN BADGE OF OFFICE with a cast running hare framed by nicely detailed oak leaves surmounted by a plumed helmet, suspended from a silver link and oak leaf chain, 95 grams. See illustration £100 - 150



Lot 119

118 - A TWO HANDED CUP AND COVER

Chester 1924 (erased) 21cms high 275gms

£100 - 130

119 - AN ATTRACTIVE MINIATURE HUNTING HORN Sampson Mordan and Co Chester 1913

30cms long, See illustration

£150 - 200

120 - A CANDLE SNUFFER BLOW PIPE

Sampson Mordan and Co Chester 1914 30cms

£100 - 150

121 - A SMALL BOTTLE STAND, SAMPSON

MORDAN & CO, CHESTER 1907.

£50 - 80



Lot 122

122 - A PAIR OF FRENCH SILVER GILT SPRING LOADED MENU HOLDER, the reserve painted with a pheasant in full flight and a hare 4cms diameter, See illustration £150 - 200

123 - A VICTORIAN SMALL SHELL mounted as a scent flask, Sampson Mordan and Co London 1885, screw off top (chipped) 7cms overall, See illustration £70 - 100

124 - A PAIR OF SMALL BUD VASES Sheffield 1923, 14cm high £40 - 60

125 - SIX SILVER HANDLED TEA KNIVES, six tea spoons and a pair of tongs Sheffield 1921, six Hanoverian pattern coffee spoons Birmingham 1930, a further six tea spoons Sheffield 1943, all cased, 215grams of weighable silver. £80 - 120

126 - A SILVER FRONTED LEATHER CASE FOR A PRAYER BOOK AND HYMN BOOK Birmingham 1906, two silver top boxes from a dressing table set, a hair brush and a damaged comb mount, all with winged cherubs heads and a damaged lyre shaped ring stand Birmingham 1904, 65 grams of weighable silver. £50 - 80



Lot 123



Lot 129

Lot 141

127 - AN INSCRIBED TWO BOTTLE INK WELL Birmingham 1929, the glass wells with hinged covers, 21 cms wide. £125 - 175

128 - A FLOWER VASE Birmingham 1904, enamelled en plein with a maiden in a rose garden (enamel badly damaged at top), 16cms high £80 - 120

129 - A SCROLL HANDLED BUTTER DISH COVER AND LINER Sheffield 1930, 22cms wide, 720 gms *See illustration* £300 - 400

130 - A CIRCULAR BISCUIT BARREL, ELKINGTON & CO., BIRMINGHAM 1905, on five supports, scroll borders, hinged cover, 15cms high, 540 grams, *See illustration* £250 - 350

131 - A ROUNDED OBLONG SEMI LOBED HOT WATER JUG, Sheffield 1903, 18cms high, 410 grams. £180 - 220

132 - A COMPRESSED CIRCULAR BACHELOR'S THREE PIECE TEA SET London 1905, monogrammed 365 grams. £150 - 200

133 - AN OVAL TEA POT AND SUGAR BOWL on four feet, lobed panels at the shoulders, Birmingham 1903/05, 685 grams. £250 - 350

134 - A GEORGE II BALUSTER MUG, Robert Makepeace, Newcastle 1753, contemporary armorials the underside engraved 1932, 12½ cms high, 295 grams, *See illustration* £250 - 300

135 - AN EARLY NAPKIN RING, London 1875, beaded borders and engraved with floral panels, a second large napkin ring Sheffield 1902, and three others 205 grams £80 - 120



Lot 130

136 - A SMALL INITIALLED CIGARETTE BOX Birmingham 1932, 8cms, and a second crested example marks rubbed, 12cms wide. £80 - 120

137 - AN INITIALLED RECTANGULAR CIGARETTE BOX, MAPPIN & WEBB, LONDON 1905, 18cms wide £100 - 150

138 - A VICTORIAN SEMI LOBED TEA POT AND SUGAR BOWL, BARNARD BROS., LONDON 1894, shell and gadroon collars, 545 grams. £225 - 275

139 - MISC. SILVER including a cigarette case, three bottle tops and a small dish, 300 grams. £125 - 175



Lot 134

140 - AN INITIALLED TWO HANDLED BOWL, London 1910, two other plain bowls an initialled egg cup Birmingham 1936, a pair of small bottle coasters and a circular ash tray, 480 grams of weighable silver. £200 - 300

141 - A REPRODUCTION TAPERING CYLINDRICAL COFFEE JUG, CJ VANDER, London 1939, 20cms high, 460 grams, *See illustration* £225 - 275

142 - A PAIR OF INITIALLED AND DATED BALUSTER CAFE AU LAIT POTS Birmingham 1929, 970 grams, *See illustration* £400 - 500

143 - A RECTANGULAR PRESENTATION BOX Dublin 1918 on Celtic pad feet and with strap work hinges, the inside lid engraved with an inscription, 24cms wide, *See illustration* £250 - 350

144 - A DRESSING TABLE SET comprising a plain initialled hand mirror, Birmingham 1926, a pair of hair brushes, a cloths brush, a shoe horn and a button hook, stamped gadroon borders £70 - 100

145 - AN ART DECO SILVER AND ENAMEL DRESSING TABLE SET comprising a hand mirror, a pair of hair brushes, a clothes brush, a faceted flash, powder jar, and an ink well with hinged cover, Birmingham 1929 and circa most pieces damaged. £70 - 100



Lot 142

146 - A QUANTITY OF COINS including a USA bi-centenary dollar, half dollar, quarter dollar set, a Belize 25 dollar proof coin 1989, Cayman Islands five dollar proof coin 1988, an American commemorative dollar 1987, a Guernsey 1989 two pound proof coin, a 1989 Pitcairn's dollar proof coin, eleven post 1946 crowns a 1963 US dollar, one shilling 1848, a half crown 1917, two others 1931/38 approximately three pounds of post 1946 coins, mixed, bank notes and a quantity of foreign modern coins. £80 - 100

147 - A GLASS BLACK FOREST DECANTER with silver collar Birmingham 1903, faceted stopper, 28cms high £50 - 70

148 - A SEVEN BAR TOAST RACK Birmingham 1913 and a napkin ring 1908 100gms £50 - 70

149 - AN URN SHAPED CASTER Birmingham 1933 16cms high 115gms £60 - 80

150 - THREE MID 20TH CENTURY INSCRIBED SMALL TROPHIES £60 - 80

151 - THREE VICTORIAN SMALL TUB SALTS Sheffield 1895, two attractive small silver topped dressing table jars, London 1831, a large Swedish caddy spoon, a pickle fork Birmingham 1909, four small spoons and a plated spoon 110gms. £70 - 100

152 - A CIRCULAR OPEN WORK BASKET one foot missing, a modern shallow dish, 180gms, two salt cellars on spun silver bases, two odd spun silver candlesticks, a bud vase, silver topped dressing table jar and four silver mounted dressing table bottles (damaged). £80 - 120



Lot 143

153 - A SILVER HORSE SHOE, Sheffield 1972, 23 grams, boxed. £30 - 50

154 - A SILVER TWO HANDED CUP LONDON 1901 with leafy scrolling handles raised upon a circular plinth 7 1/2", 468 grams £150 - 200

155 - A SILVER WATER JUG CHESTER 1900 with a broken ebonised handle, bruised, 287 grams. £120 - 180

156 - A SILVER CIGARETTE CASE BIRMINGHAM 1942 machine decorated, 177 grams £50 - 80

157 - A SILVER CIGARETTE CASE CHESTER 1931 machine decorated, 158 grams, and a silver bangle total weight 187 grams. £50 - 80

158 - A CASED FOUR PIECE SILVER AND ENAMEL DRESSING TABLE SET comprising hand mirror, hair brush and a pair of clothes brushes in a fitted case and a cased manicure set (2) £40 - 60

159 - A MINIATURE SAUCEPAN WITH PIERCED LID, SAUNDERS AND SHEPHERD CHESTER 1894 £80 - 120

160 - 169 SPARE LOTS

170 - A QUANTITY OF PLATE including a cased pair of mother of pearl handled carvers, six pairs of silver handled queens pattern fish knives and forks, cased, a second identical set, cased, a cased pair of mother of pearl handled servers, two pairs of knife rests, an incomplete fiddle pattern flatware service and other items. £80 - 120



Lot 171

171 - A LATE 19TH CENTURY CORINTHIAN COLUMN LAMP STAND complete with cut glass globe and top fitting complete with funnel (shade detached) 40cms high to top of reservoir. See illustration

£80 - 120

172 - A ROUNDED OBLONG ENTREE DISH with side handles, gadroon borders, an oblong cut corner entree dish and cover with detachable handle, moulded borders and a EPBM replated coffee pot. £20 - 30

173 - A PAIR OF REPRODUCTION TABLE CANDLESTICKS 25cms high, s small vase, salt seller and spoon, caster, a Masonic medallion, a Palais Royal box, an ebony rule and scent flask holder in the form of furred umbrella £20 - 50

174 - DOUBLE ENDED CRANBERRY GLASS SCENT FLASK, Sampson Mordan and Co circa 1880, the faceted cranberry glass body hinged in the centre and with one screw and one spring loaded cap, 13cms long £100 - 150

175 - QUANTITY OF PLATE including a four piece hotel pattern tea set, sugar vase, a salver, EPNS coffee pot, a trefoil dish and other items £10 - 20

176 - A QUANTITY OF PLATE six Mother of Pearl handled tea knives, six tea spoons and a pair of tongs, six pairs of fish knives and forks and a pair of carvers, six tea knives, six cake forks, all cased, a glass biscuit jar with painted desert scene, a swing handle basket and other items. £25 - 45

177 - A GENTLEMAN'S WALNUT TRAVELLING CASE comprising seven bottles with plated mounts, five bottles, (one damaged) with glass stoppers, a silver bladed pen knife, two manicure implements, complete with secret jewellery drawer £60 - 100

178 - A MAHOGANY CANTEEN OF CUTLERY the rectangular chest with five frieze drawers each with ring handles raised upon a shaped plinth and vase shaped legs enclosing three piece carving set, twelve table knives, twelve cheese knives, two dessert forks, eleven table forks, nine dessert forks, twelve teaspoons, six egg spoons, butter knife, sugar spoon, sugar tongs, twelve fish knives and forks, twelve dessert spoons, nutcrackers, twelve soup spoons, six tablespoons, three ladles, fish carvers, gravy spoon and two associated items 33" x 20" See illustration £150 - 200



Lot 178



Lot 182

179 - A LARGE QUANTITY OF PLATE including three entree dishes and covers with detachable handles, a pair of tapering cylindrical mugs, a pair of toast racks, four piece tea set, a horsd'oeuve dish, a bottle stand, two small coasters, a jockey cap bottle stopper, and other items £40 - 80

180 - THIRTEEN MINIATURE PEPPER CASTORS, eleven similar for salt, a four cup egg cruets, an egg boiler with stand and burner, an egg coddler with stand and burner and a cased marmalade jar and cover and a French bronze cat. £70 - 100

181 - AN ASPARAGUS FRAME, no base, 25cms wide and twelve individual asparagus tongs. £100 - 150

182 - AN EARLY 20TH CENTURY WMF INK STAND with panels of looped strap work, the hinged cover opening to reveal the original ink well, 32cms wide, See illustration £150 - 250

183 - A LEATHER COVERED STAINLESS STEEL HIP FLASK with detached beaker and filler £20 - 40

184 - A CIRCULAR ART DECO SHAVING DISH AND COVER with detachable side handle, 26cm diameter and a side handled entree dish and cover. £25 - 45

185 - A TOASTED CHEESE DISH, 24cms wide and a side handled double skin chaffing dish complete with cover and divider. £25 - 45

186 - A MELON PATTERN SOUP TUREEN, COVER AND LINER, circa 1830, contemporary crest and coat of arms, the handles and feet headed by oak leaves and acorns below a shell decorated border, matching cover, (one handle cracked) 40cms wide. See illustration £200 - 300



Lot 186



Lot 187

187 - A SET OF FOUR DISH COVERS with gadroon collars, circa 1830, oak leaf and acorn handles, crested, 51cms, 46cms, and a pair 36cms wide. *See illustration* £250 - 350

188 - A SHAPED OBLONG ENTREE DISH AND COVER with side handles, gadroon borders, 30cms wide. £20 - 30

189 - A SHAPED RECTANGULAR SWING HANDED DESSERT BASKET circa 1870, an Onslow pattern serving spoon and fork and a V & A Museum reproduction knife £25 - 45

190 - A FOUR PIECE ART DECO TEA AND COFFEE SET the square corner bodies with straight sides, the tea and coffee pots inset at the angles with hardwood pad feet, associated chrome plated tray, *See illustration* £100 - 200

191 - A CANTEEN OF SIX DESSERT SPOONS, SIX FORKS, TWO SERVING SPOONS, MEAT FORK, SIX KNIVES AND A CARVING SET each piece with plated mounts and ebony handles, a conforming case set of tea spoons and pastry forks, a cased set of six pairs of fish knives and forks. £30 - 50

192 - A LEATHER CASED TRIO OF SPIRIT FLASKS each with plated screw on drinking cups, shaped glass bodies in a hinged leather case 7 1/2" £50 - 80

193 - A VICTORIAN PLATED THREE BOTTLE TANTALUS with a scroll and leaf handle raised upon a trifirm stand and leafy feet, 17" high £80 - 150



Lot 190

METALWARE

200 - A PAIR OF VINTAGE BRONZE MILK BUCKETS, complete with covers and taps. £150 - 200

201 - A 17TH CENTURY BRONZE MORTAR of tapering cylindrical form with two half round lug handles decorated with a band of fleurs de lis, 5" high, 6 3/4" high, £200 - 300

202 - A COPPER, BRONZE AND STEEL MILK BUCKET with an adjustable handle, 14 1/2" £40 - 60

203 - A VICTORIAN COPPER WARMING PAN lightly engraved with a turned handle and posser (2) £20 - 40

204 - A PAIR OF VICTORIAN BRASS PATINATED HANGING LANTERNS PUGIN STYLE each of tapering hexagonal form, some glass panels detached raised upon a swinging stave holder 15" high *See illustration* £40 - 60



Lot 204

205 - A VICTORIAN ADAM STYLE BRASS FENDER with urn finials and a frieze of pendant laurel leaves raised upon bracket feet, 55" £50 - 80

206 - A VICTORIAN COPPER WARMING PAN slightly domed and engraved cover, ebonised baluster handle £40 - 60

207 - A VICTORIAN COPPER TWO HANDED PRESERVE PAN WITH A FOLDED RIM shaped steel handles 17" £80 - 120

208 - A NEAR PAIR OF VICTORIAN COPPER JARDINERES each with everted rims, the bodies stamped with leaves and flowers, raised upon a circular foot 9" (2) £50 - 80

209 - A MINERS "THE PROTECTOR" LAMP Lamp and Lighting Company Eccles of typical form 10 1/2" *See illustration* £30 - 50

210 - A BRASS FIRST WORLD WAR PRESENT BOX stamped with a bust of Princess Mary, Christmas 1914 and a similar box each 5" x 3 1/2" *See illustration* £40 - 60

211 - A VICTORIAN COPPER KETTLE with a domed cover, acorn finial and overhead handle 13" high £20 - 40



Lot 209 Lot 210

212 - A LATE 19TH CENTURY EARLY 20TH CENTURY FIRE ENGINE BELL typical form with later brass hanging bracket, the bell with a red interior complete with clapper 8" diameter 9" high excluding bracket *See illustration* £80 - 150

213 - A COLLECTION OF HORSE BRASSES including an RSPCA merit badge presented 1927 shaped brass centred with a prancing horse, another with leaves and birds, approximately 16 £40 - 60

214 - A VICTORIAN COPPER LIDDED SAUCEPAN makers mark CS/FS of cylindrical form 4½" high £80 - 120

215 - A CONVERTIBLE DESK LAMP with a cylindrical column and adjustable copper shade with a copper reservoir, supported on a column raised upon a circular base, converted to electricity 25" high £50 - 80

216 - A TABLE GONG raised upon a fluted half round support and platform feet together with a beater and a stand £20 - 40

217 - A VICTORIAN FIGURAL TABLE LAMP modeled in the form of a Roman Soldier holding a vase aloft raised upon a circular marble plinth 17" high £40 - 60



Lot 212

218 - A WROUGHT IRON FIRE GUARD spirally turned pricket candle holders flanking lattice work panel applied with flower heads with downswept legs, 41" high x 46" *Contents of Edgeley.*

See illustration £100 - 150

219 - A VICTORIAN COPPER COAL HELMET with an adjustable handle raised upon a circular foot with a pair of tongs £50 - 80

220 - A VICTORIAN BRASS SKELLET with a steel loop handle £20 - 40



Lot 221

221 - A GOOD AND LARGE BRONZE HERON, 70" high, *See illustration* £200 - 300

222 - A SET OF ELEVEN BRASS WEIGHTS each of haystack form the largest 14 pounds, 8" high £150 - 200



Lot 222

223 - A VICTORIAN COPPER HANGING KETTLE with cover, iron loop handle and pouring tap 22", two copper funnels, Burmese brass vase

£20 - 40

GLASSWARE



Lot 225

225 - A GEORGE III PEAR SHAPED RUMMER with a tapering bowl with a collar raised upon a circular foot 5", three Victorian cordial glasses raised on angular knopped stems 6¼" and a Georgian rummer with a pear shaped bowl 5" (5)
See illustration £80 - 120

226 - A LATE 19TH EARLY 20TH CENTURY CHEMISTS ADVERTISING BOTTLE of swelling bulbous form raised upon a circular foot 24" high See illustration £40 - 60



Lot 226

227 - A VICTORIAN BLUE GLASS AND GILT ENTWINED VASE decorated in gilt with oak and acorns, raised upon a spirally fluted base 14½"
£40 - 60

228 - SIX 20TH CENTURY OPAQUE GLASS LIGHT SHADES one of hexagonal shape with a red and mottled leafy marbled decoration, three other coloured examples, a white flower moulded shade and an opaque and clear glass.
See illustration £40 - 60



Lot 228

229 - AN EARLY 20TH CENTURY CUT GLASS TABLE LAMP with a mushroom shaped shade decorated with facet cut ovals and flower heads raised upon a trumpet shaped base 13½"
See illustration £40 - 60



Lot 229

230 - CHOICE EDWARDIAN STYLE HANGING CUT GLASS LIGHT with an octagonal gilt metal frieze centred with cut glass lozenges, cut glass above a similar frieze with roundels and pendant glass lustre's approximately 24" high and a modern brass coated hexagonal panelled glass light fitting, modern See illustration £100 - 150



Lot 230

231 - A PAIR OF GLASS LUSTRE TABLE LIGHTS each with finely moulded baluster stems each with pendant glass lustre's and a cut glass tulip shape shade, 22" high £50 - 80

BESWICK

235 - A BESWICK PAIR OF PHEASANTS
No: 2078 designed by Arthur Gredington 6½" high, issued from 1966-1975,
See illustration £300 - 400



Lot 236

Lot 235

236 - A BESWICK PAIR OF GROOSE No: 2063 designed by Albert Hallam, 5½", red and brown gloss, issued from 1966-1975,
See illustration £150 - 200

237 - A BESWICK SOW AND BOAR, Wall champion boy and queen and a middle white boar (3) £40 - 60

238 - A BESWICK BERKSHIRE BOAR number 4118 3¼" from the rare breeds, a Royal Doulton Tamworth sow, a Royal Doulton pot bellied sow and piglet (4) £40 - 60

239 - A BESWICK BLACK FACED SHEEP number 1765 3¼" and two lambs (3) £30 - 50

240 - A BESWICK DONKEY number 2267A 5½" and a foal 4½" (2) £20 - 40

241 - A BESWICK SPANIEL number 2980 on plinth 8¼" from the Spirited Dogs series, a sheepdog, small, cocker spaniel and a running fox (4) £30 - 50

242 - A BESWICK SHIRE FOAL, number 1053 small designed by Arthur Gredington 5" brown, and a racehorse 8" (2) £40 - 60

243 - A COLLECTION OF FOUR BESWICK DOGS, including terrier, black and white spaniel, Jack Russell, corgi (4) £20 - 40

244 - COLLECTION OF THREE BESWICK DOGS including cairn, black scottie and Welsh terrier (3) £20 - 40

245 - A GROUP OF THREE BESWICK BIRDS, Bullfinch 1042, Blue Tit, White Throat, a Gooble finch (4) £30 - 50

BRITISH CERAMICS



Lot 250



250 - A H BRANNAM VASE with a cylindrical neck the shoulders with three smaller trumpet shape vases decorated with insized decoration depicting fish and marine plants signed H Barum initials EBFB 44561 1909, 10" high some restoration
See illustration £100 - 150

251 - A CREAMWARE COMMEMORATIVE PLATE POSSIBLY DUTCH the central well painted with portraits and inscribed AGIE Wilms Piet the silver shape border with reserve panels with six inscribed panels including Met Eerbied Daar Ik God Moeh Loven indisbursed with flowers 9½", *See illustration* £80 - 120



Lot 251

252 - A STAFFORDSHIRE PEARLWARE TWO HANDLED TRUST IN GOOD INDUSTRY PRODUCETH WEALTH LOVING CUP transfer printed and painted with royal artefact's and a verse, a Staffordshire Pearlware Victoria and Albert jug circa 1840, a pair of porcelain Japan pattern saucer dishes and a Wedgwood blue and white commemorative mug decorated with horses, a Staffordshire model of an owl and a Royal Worcester Grainger and Company spirally moulded vase decorated with flowering plants (7) £40 - 60



Lot 254

253 - A NEAR PAIR OF ELSMORE & FORSTER PUZZLE JUGS each decorated in lustrous colours with harlequins and flowers, one restored each 8½". £100 - 150

254 - A WEMYSS WARE SAUCER DISH decorated with damsons in shades of blue and green with a petal shape border inscribed England, 8" and a similar Wemyss shaped vase decorated with black cockerels and red cones against a green ground, impressed marks, *See illustration* £100 - 150



Lot 255

255 - A CARLTON WEAR VEGETABLE CRUET AND STAND with onion, carrot and pea raised upon a leaf shaped stand, black printed marks, the stand ¾", *See illustration* £50 - 80

256 - A ROYAL DOULTON "AN IRISH JUG" MUSICAL PADDY CHARACTER JUG with a Thorens movement 6" £20 - 40



Lot 257

257 - A PAIR OF ROYAL DOULTON BLUE TRUMPET SHAPE VASES burnished gilt rims, shoulders tapering to the base, decorated with a lady wearing a ribbon tied bonnet holding a basket of flowers with a child by her side, raised upon a square plinth base, green printed marks and impressed Doulton 25½" and a companion. The companion with a restored rim and re-glued socle base *See illustration* £150 - 200

258 - A PAIR OF VICTORIAN STAFFORDSHIRE LIONS moulded bodies, glass eyes, one with front leg restored 11" high *See illustration* £40 - 60



Lot 258

259 - A COLLECTION OF TEN VICTORIAN MOUSTACHE CUPS each brightly coloured with similar saucers and two commemorative cups and saucers including Menai and Britannia Bridge, and Duckinfield Old Hall chapel £30 - 50

260 - A ROYAL WORCESTER RETICULATED BALUSTER BRANCH HANDLED VASE the rim painted with gilt leaves, pierced with squares above a pierced body decorated in shades of green, red, red printed mark 5" £400 - 600

261 - A PRATT POT LID "THAT NO JEALOUS RIVAL SHALL LAUGH ME TO SCORN", 4", on guard, cracked, figures smoking a pipe beside a lady with poultry and a dog 4", on guard, the enthusiast, and two others (6) some damaged. £40 - 60

262 - A PALISSY GUGLET with branch handles and two spouts, the shoulders tapering to the base applied with reptiles and insects impressed oval marks, restored 8" high *See illustration* £40 - 60



Lot 262



Lot 263

263 - A CROWN DUCAL CHARLOTTE RHEAD TUBE LINED HANDLED VASE decorated with flowers and leaves, small chip to foot rim 7" high
See illustration £40 - 60

264 - A CAPO DI MONTE CASKET with a domed cover decorated in relief with horses and cherubs making merry. £40 - 60

265 - A PAIR OF WORCESTER COFFEE CUPS each with trellis pattern internal rims, the exterior with four panels each decorated in the Japan pattern with precious objects and creatures, two conforming tea cups and a saucer.
See illustration £80 - 120



Lot 265

266 - A ROYAL DOULTON ARDEN PATTERN DINNER SERVICE, pattern number H4979 comprising 11 10½" plates, two 10" circular lidded tureens and covers, two gravy jugs, 12 8" plates, 12 two handled soup bowls and saucers £80 - 120



Lot 269

267 - A ROYAL DOULTON STONEWARE VASE shoulders tapering to the base, tube lined with flowers and branches in shades of mottled blue, red, green and brown, impressed marks and incised E B number 8751 14" £70 - 100



Lot 273

268 - A ROYAL DOULTON WHITE TURKEY, D6889, No: 1383 of a limited edition with certificate, issued 1990, 6" high.
See illustration £150 - 200

269 - A ROYAL DOULTON BRONZE TURKEY, D7149, No: 787 of a limited edition of 3000, issued in the year 2000 with certificate.
See illustration on front cover £150 - 200

270 - A STONEWARE AND TRECACLE GLAZED WINE FLAGON impressed John Scott, Wine Merchant, Glasgow number 4284 with an oval Hy.Kennedy Barrowfield Pottery, Glasgow side handle with chip otherwise in good condition 19" high £40 - 60

271 - A GERMAN STONEWARE URN possibly Mettlach, the bell shaped cover with a leaf flower, and ribbon border above a frieze of winged and mythological figures raised upon a circular base with a tap aperture 20" high £40 - 60

273 - AN EARTHENWARE TABLE LAMP modelled in the form of a swan by Thomas Good, mid 19th century, neck restored, detachable reservoir, shade and funnel.
See illustration £40 - 60



Lot 275

274 - A STAFFORDSHIRE COW CREAMER late 19th early 20th century with a red speckled body raised upon oval green and gilt lined base, some damage 6½" £20 - 40

275 - A CROWN DEVON FIELDING'S LUSTRE SHAPED CIRCULAR PANELLED DISH the centre decorated in enamel colours with a masted galleon, printed marks number 8297L/S 9¾" See illustration £40 - 60

276 - A BILSTON ENAMEL ROUNDDEL DEPICTING A MAIDEN IN A GREEN BONNET, HEAD AND SHOULDERS, 1½" and a companion, (2) each framed £50 - 80

277 - A ROYAL CROWN DERBY JAPAN PATTERN OVAL MEAT PLATE pattern number 2451 15" diameter £40 - 60



Lot 278

278 - A WEDGWOOD KEITH MURRAY VASE the swelling ribbed body with a short neck raised upon a circular base decorated in shades of blue, blue printed marks Wedgwood of Etruria and Barlaston. See illustration £100 - 150

279 - A ROYAL ALBERT OLD COUNTRY ROSES DINNER AND TEA SERVICE comprising seven 10½" plates, six 7" plates, an 8" plate, 16 6½" plates, 7 fruit bowls, 12 cups, 18 saucers, sugar bowl and a two tier cake stand £80 - 120

280 - A MIDWINTER SPANISH GARDEN SERVICE designed by Jessie Tait, 7 10½" plates, tureen and cover, six cups, sauce boat, six saucers, eight side plates and a Booths real Old Willow pattern dinner and tea service £20 - 40



Lot 281

281 - FOUR WEDGWOOD MAJOLICA SALAD LEAF PLATES each decorated in poly chrome shades with cabbage leaves impressed Wedgwood 8" diameter £40 - 60

282 - A ROYAL WORCESTER BLUSH IVORY TRUMPET SHAPED VASE painted with roses, signed Kitty Blake, re-glued neck, a Royal Worcester Blush Ivory trumpet shaped vase painted with berries and leaves, signed K Blake, extensive hairline crack, 9", a Royal Worcester Blush Ivory shouldered vase signed S Pilsbury painted with roses, damaged neck 4", a pair of Coalport plates a Minton Haddon Hall vase 4", a vase decorated with pansies, a Royal Copenhagen trefoil shaped dish, two Capi Di Monte cups and saucers £50 - 80



Lot 283

283 - A GERMAN PORCELAINOUS CANDELABRA POSSIBLY PLAUE with a maiden seated by two winged cherubs on a branching tree with two candle branches overall applied with flowers 13½" See illustration £40 - 60



Lot 284

284 - A STAFFORDSHIRE PORTRAIT FIGURE "GARIBALDI" standing beside his horse, head restored, part of sword missing 9½", a portrait group Wesley, standing under a lancet window flanked by two angels above a clock face, some minor damage, a portrait figure, Old Parr 9", a group of a horse and a red and white cow watering at a trough beneath birds 9" and a pair of spill vases, modelled as hounds chasing a deer 6" (6) See illustration £50 - 80



Lot 293

285 - A BORDER FINE ART "MOUSE AND APPLE CORE" MM01 3 1/4" from the miniature mice on fruit series and two companions mouse on apple core and banana (3) £80 - 120

286 - A BORDER FINE ART GROUP HEDGEHOG FAMILY, FAMILY LIFE WW12, old spot pigs suckling, signed Lowell Davis and pig and piglets at a trough signed Ayers 1985 from the Heriot collection (3) £40 - 60

287 - A BORDER FINE ART MODEL OF A PEREGRINE FALCON signed Ayers 2003 BO854 loyalty figure 3", a Border Fine Art Kingfisher M24, a pig "E" 130E, Aynsley mouse with berry, a similar figure (5) £50 - 80



Lot 294

288 - A BORDER FINE ART GROUP "RIVER MAJESTY, OTTERS" MTR06 modelled by Ray Ayres 7 1/4" from a limited edition of 3000 pieces with certificate £50 - 80

289 - A BORDER FINE ART FLYING PEREGRINE number A1276 by Russell Willis 13 1/2" from the Birds of Prey series £40 - 60

290 - A MOORCROFT TUBE LINED SMALL DISH decorated with flowers against a blue ground 3" £20 - 40

291 - A WEDGWOOD MATT FIGURE CHRISTMAS AT WINDSOR AND THE GOLDEN JUBILEE each from a limited edition £40 - 60

292 - A BURLEIGH WARE CECIL ALDIN DICK TURPIN VASE 7", an embossed hunting jug, ceramic Moss Bros top hat (3) £80 - 120

293 - A SHELLY MABEL LUCIE ATTWELL BOBO THREE PIECE TEA SERVICE comprising tea pot, open sugar bowl and milk jug (3) each with green tinted marks registered RD number 724421 See illustration £150 - 200



Lot 295

294 - A CLARICE CLIFF NEWPORT POTTERY SUGAR CASTER decorated with a red roofed dwelling, trees in landscape in poly chrome shades 5" signed Clarice Cliff, Newport Pottery, England See illustration £150 - 200

295 - A CLARICE CLIFF FANTASQUE JUG of octagonal form, the yellow ground with a frieze decorated with stylized motifs in shades of orange, blue and green, black printed mark Hand painted Fantasque by Clarice Cliff, Wilkinson's, England 6 1/2" high, minor hairline crack above handle. See illustration £150 - 200



Lot 296

296 - A CLARICE CLIFF FANTASQUE HAND PAINTED DRESSING TABLE CANDLESTICK everted rim, orange ground, the surbase decorated with roundels and panels of stylized objects, black printed marks Hand painted Fantasque by Clarice Cliff, Wilkinson's, England 3" high. See illustration £80 - 150



Lot 297

297 - A CLARICE CLIFF FANTASQUE HAND PAINTED VASE the shoulders tapering to the base, red and black ground with a reserve panel painted with a green roof dwelling and trees in landscape, black printed marks Hand Painted Fantasque by Clarice Cliff, Wilkinson's, England impressed 1513 10" high. *See illustration* £80 - 120



Lot 298

298 - A CLARICE CLIFF FANTASQUE HAND PAINTED JARDINIERE the yellow ground with a frieze decorated with stylized objects in shades of orange, green, blue and black raised upon three feet, printed Hand painted Fantasque by Clarice Cliff, Wilkinson's, England 6³/₄" and hairline crack *See illustration* £80 - 120

299 - A WEDGWOOD BLUE JASPER DIP TWO HANDED ROYAL WEDDING CUP PRINCE CHARLES AND LADY DIANA 4" a shaped rectangular dish 1981, a portrait dish Royal birth 1984, (3) £20 - 40



Lot 304

300 - A SET OF SEVEN WEDGWOOD BLUE JASPER DIP CHRISTMAS PLATES 1971-1974, AND 1976-1978 (7) £20 - 40

301 - A SET OF FIVE WEDGWOOD BLUE JASPER DIP CHRISTMAS MUGS, 1974, 75, 77, 79,81, an Olympiad 21 mug and a Commemorative Royal Wedding Plate 1986 (7) £20 - 40

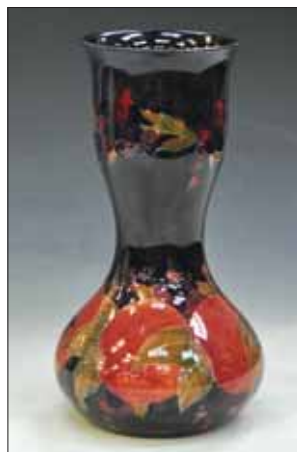
302 - A PAIR OF VIENNA STYLE PORCELLAINEOUS TWO HANDLE VASES AND COVERS each with tapering bodies raised upon square plinths, transfer printed and decorated with classical subjects 13¹/₂" high and a similar two handled vase, a Japanese cylindrical jar and cover decorated with figures cracked 4¹/₂" and a Burmese copper and white metal shaped dish 7¹/₂ (5) £40 - 60

303 - A ROYAL WORCESTER BLUSH IVORY AND PLATE MOUNTED BISCUIT BARREL AND COVER the bulbous body decorated with sprays of blooms and leaves, green printed mark No: 1651 high. £80 - 120

304 - A PAIR OF BELLEEK CORNUCOPIAS supported on rocky mound bases, black printed marks, Fermanagh, Ireland 9" high. *See illustration* £200 - 300

305 - SPARE LOT

306 - A WILLIAM MOORCROFT BALUSTER VASE the shoulders with a slender stem and bulbous body, tube lined with fruit and leaves in shades of purple, red and green, green signature impressed marks Moorcroft, Burslem, England number 102, 11¹/₂" *See illustration* £300 - 400



Lot 306

ORIENTAL CERAMICS

315 - A POSSIBLY CHINESE BRONZE PATINATED VASE with an everted rim the shoulders spreading to a bulbous base 11¹/₂" £100 - 150

316 - THREE CHINESE EXPORT WARE PLATES each with recessed wells the rims decorated with flowers and leaves the central reserve decorated with pavilion, islands and boats 9", a Chinese vase the shoulders tapering to the base, fluted body decorated in dark blue with panels of flowers and leaves 4½", a pair of Oriental salts each with petal shape rims raised upon shaped feet decorated with panels depicting flowers and leaves 4" (3)
See illustration £80 - 120



Lot 316



317 - A 19TH CENTURY TEA POT decorated with panels of flowers and leaves in the Japan pattern, a Chinese tea bowl Export Ware 19th century decorated with panels of dignitaries, pavilioned islands and dwellings 3½", a Chinese Export Ware plate the rim decorated in enamel colours with prunus pattern the central well painted with a cockerel perched upon flowering branches 9" and a Chinese blue and white saucer dish decorated in blue and white with flowering plants highlighted in gilt 8½" *See illustration* £50 - 80



Lot 317

318 - LACQUERED MOTHER OF PEARL AND IVORY PANEL APPLIED WITH BIRD STANDING BESIDE FLOWERING PLANTS, INSECTS IN FLIGHT signed 16½" x 10½"
See illustration £40 - 60

319 - GLOVER "PRINCESS WITH A WOUNDED SWAN" AFTER THE ORIGINAL 14" x 12"
 £40 - 60



Lot 318

320 - A CHINESE BALUSTER VASE late 19th century, shoulders tapering to the base, decorated with panels of dignitaries amidst a foliate ground, damaged 15" high and a Japanese Arita pattern baluster vase decorated with birds perched on flowering branches 8½"
 £40 - 60

COLLECTORS ITEMS

321 - A GILT METAL FIVE BRANCH CHANDELIER with a fluted ribbon column with five downswept scrolling foliate branches, 21½"
 £80 - 150



Lot 322

322 - A COLLECTION OF BRITAINS LEAD SOLDIERS, INDIANS, FIELD GUN AND A FORT. *See illustration* £80 - 150

323 - A BRITAINS LEAD FOX HUNTING COLLECTION *See illustration* £80 - 120

324 - A BRITAINS LEAD FARM YARD COLLECTION including figures, animals, also a small collection of Hills zoo animals.
See illustration £100 - 150

325 - A VICTORIAN TORTOISESHELL BOX of upright rectangular form with a hinged cover the side of slightly bow front outline, 5¼" x 2¼"
 £100 - 150



Lot 323

326 - A TORTOISESHELL AND WHITE METAL BOX of shaped rectangular form the centre applied with a white metal leafy frieze with an oval, initialled enclosed by a wire work frieze, 3"x2"
£150 - 200



Lot 324

327 - A PAIR OF BRONZE PATINATED MODELS OF TERRIERS each standing on Onyx bases 5", two patterned dogs (4) £40 - 60

328 - AN EARLY 19TH CENTURY BOBBIN REEL HOLDER with a padded pin cushion, acorn and baluster turned shaft with two circular bobbin holders raised upon bun feet 9" high. £40 - 60

329 - A CLOCKWORK TIN PLATE ROAD ROLLER green, yellow and red livery and a Japanese tin plate No: 2 fire engine with figures 7 1/2" each mid 20th century.
See illustration £40 - 60

330 - AN EARLY 20TH CENTURY BLUE AND GILT TOOLED LEATHER FOLDING NEEDLE CASE complete with original needles, sharps, crewel, wool, chanel, each labelled with an outer cardboard box made at Reddish England circa 1910 extended 16" £50 - 80



Lot 329 Lot 359 (part)

331 - 15 POSTCARDS STAMPED LATE 19TH OR EARLY 20TH CENTURIES from various places including America, Persian, Japan, Orange Free State, Gibraltar, France, India, Cape of Good Hope and the Netherlands, a further eight unused examples, all the postage pre paid and 21 envelopes with GB penny stamps, stamped with the cancellation mark of the Royal Niger Company, Chartered and Limited, 18th Sep 1898 Post office Burutu, not addressed, three more cards £10 - 20

332 - FOUR POSTCARDS FROM VIENNA TO LIVERPOOL CIRCA 1900, two from Hamburg, one from Stockholm, another from Lappvik, Finland with a Hull ship letter arrival stamp, one from Sierra Leone and one from the Orange Free State and four other from Spain, Canada, Gibraltar and cape of Good Hope and four from America £10 - 20

333 - FIVE ENVELOPES OR CARDS WITH GP PENNY REDS, a 1903 envelope to a ship passenger in Marseilles with French postage due stamp, four envelopes with embossed penny stamps, an American example, envelopes from Cape of Good Hope, South Africa, over struck E.R.I. and stamped passed by censor, others from India, America and Cape of Good Hope £10 - 20

334 - AN EDWARDIAN EMBROIDERED COSTUME including a cotton and silk child's dress with a pierced embroidered neck piece and three others (4) £40 - 60



Lot 335

335 - A SMITH BECK AND BECK LACQUERED BRASS BINOCULAR COMPOUND MICROSCOPE signed on the foot Smith Beck and Beck, London number 416, the binocular body tube with eye piece adjustment with circular stage, plano concave substage mirror, supported on a circular column on a triangular foot, in the original fitted mahogany carrying case with key and brass handle, the microscope with Wenham prism with fitted accessories including 2", 1 1/2" and 1/4" eye pieces parabolic substage condenser, Collins graduating microscope diaphragm signed 77 Great Titchfield Street, London, Lieberkuhn speculum camera lucide, Polariserpe, Zoophyte trough, a tray of slides including those with labels for ward Prepared for objective Manchester including eye of fly, the microscope 14 1/2", the case, 15 3/4" x 7" x 6"
See illustration £800 - 1200

336 - TWO PROBABLY DAYAK BORNEO CEREMONIAL WEDDING PADDLES each with incised decoration 23½" long £100 - 150

337 - A PAIR OF BRONZE CEREMONIAL WALL MASKS 7¼" and an aboriginal colum Western Australia (3) £40 - 60

338 - A GEORGE IV ROSEWOOD AND BRASS INLAID TABLE ENCRIER the rectangular top with two hinged covers inlaid with brass strapwork enclosing two divisions and a lidded compartment and a pen rest two associated plate mounted glass ink bottles with a turned overhead handle above a frieze drawer 5½" x 9¾" x 5½" £50 - 80

339 - A VOIGHTLANDER BRILLIANT BOX CAMERA, Kodak No: 1 autographic Kodak Junior camera, Brownie 6/20 camera model C, Cadine Camera and case, Ensign E29, Kodak Sterling 2 camera, Agfa Isolette with leather case, Polaroid 103, Olympus 35SP, Exakta RTL 1000, Super Pakette, lenses and other items, quantity. £40 - 60

340 - A LE POSOGRAPHE enclosing a chrome framed panel indicating exposure for outdoor subjects, month, state of sky, interiors, colour of walls with an outer case and a microscope lens stamped London (2) £20 - 40

341 - A VICTORIAN GILT BRASS AND OAK REVOLVING MUSIC CANTERBURY with a wirework frame raised upon downswept supports 33" £40 - 60

342 - AN JAPANESE EBONY HARDWOOD URN STAND 6½" diameter and ten various other stands. £20 - 40

343 - A LEOPARD SKIN mounted on board, worn, 69" £40 - 60

344 - AN ORNATE VICTORIAN LIGHT FITTING, with a gilt metal feathered border 21" £80 - 120

345 - A VICTORIAN WALNUT ENCLOSED MINIATURE CHEST with a dwarf back above a panelled cupboard door enclosing four short drawers and niches 24"x18"x9½" £50 - 80

346 - A VICTORIAN WALNUT MINIATURE CHEST with a dwarf back above a pair of panelled cupboard doors enclosing four short drawers and niches 24"x18"x9½" £50 - 80

347 - A TRIX TWIN RAILWAY, comprising a locomotive 040 No: 3C846 black livery, another 040 lacking two wheels black coachwork No: 50, Crescent Toys signal the Trix twin railway permanent formation 915 together with Year Book 1954, transformer, including flat bed brick carrier, five wagons, coal tender, Shell oil wagon, a crescent signal, quantity, boxed. £40 - 60

348 - A GERMAN BISQUE HEAD DOLL with open eyes and mouth, composition jointed body, 21", a Pedigree celluloid doll 21", another 22" and a collection of various celluloid and padded dolls approx 22, *See illustration* £40 - 60

349 - A BRONZE MODEL OF A GOAT BY PAUL JENKINS 3½" high £80 - 150



Lot 348

350 - A BRONZE MODEL OF A JUMPING FOX by Paul Jenkins number 55 from an edition of 95 6" high £120 - 180

351 - A BRONZE STAFFORDSHIRE BULL TERRIER SEATED ON AN OVAL BASE raised upon marble plinth 6½" high £80 - 120



Lot 352

352 - MR FOX, FULL HUNTING COLOURS SEATED, very good condition circa 1955. *See illustration* £100 - 150

353 - A VICTORIAN COLD PAINTED METAL FIGURE OF A NUBIAN LADY SEATED ON A PERSIAN RUG possibly Bergman 2½" x 4¼" and a cold painted matchbox holder (2) *See illustration* £40 - 60

355 - A VIOLIN WITH A PAPER LABEL PRINTED JOHN A MURDOCK & CO., LONDON "THE MAID STONE", second violin and four bows. £40 - 60

356 - A CRICKET BAT NAT WEST OLD ENGLAND 11 1995 signed £50 - 80

357 - A SILK TOP HAT 6", Baynes, Manchester, good condition, paper case £20 - 40

358 - A TRIANG TOYS MAGIC MIDGET CLOCK WORK RACING CAR green livery, white tyres 16" *See illustration* £40 - 60



Lot 353



Lot 358

Lot 359

359 - A TIN PLATE CLOCKWORK BUMPING CAR WITH DRIVER red livery 9½", and a Schuco clockwork car blue livery, 4¼"
See illustration £20 - 40

360 - A VICTORIAN SYMPHONIUM rectangular ebonised box with a hinged cover, transfer decorated with a roundel, printed Brevette, patent,



Lot 360

enclosing a movement with two combs each in good condition, number 1646 with a collection of 8¼" discs, with a turned wood winding handle.
See illustration £100 - 150

361 - A BETWEEN THE WARS RAF OFFICERS KHAKI TUNIC, modern buttons (small size) and a second similar jacket with imitation Chinese badges £20 - 30

362 - A MID 20TH CENTURY JOCKEY AND RACEHORSE CAR MASCOT and an eagle mascot with raised spread wings 6" high £30 - 50

363 - A PAIR OF VICTORIAN HEARTH ORNAMENTS modelled in the form of horse guards raised upon plinth bases 9½" £50 - 80



Lot 367

364 - A PAIR OF MODERN FENCING FOILS by Leon Paul, a socket bayonet (rusty), a reproduction scimitar etched made in India and a second similar weapon £20 - 30

365 - A GROUP OF FIVE WORLD WAR II MEDALS, 1939 1945 Star, Italy star, France and Germany star, Defence medal, War medal £20 - 30

366 - A HUNTLEY AND PALMERS BISCUIT TIN modelled in the form of a Christmas lantern with a hinged cover stamped Reading and London 9½" £40 - 60

367 - A SILVER MOUNTED STAG'S HORN WHIP stamped Swane and Adeny Limited, London 1923 69" long excluding 11" string and a silver and bone handled crop Birmingham 1927.
See illustrations £50 - 80

368 - A PAIR OF VICTORIAN INLAND POSTAL SCALES two brass platforms raised upon a serpentine base with five brass weights 8" £20 - 40

369 - A CORGI BOXED MODERN TRUCKS, Eddie Stobart Limited, approximately 12" long, Corgi Foden S21 Mickey Mouse with trailer. (2) £40 - 60

370 - A CORGI A 254 SCAMMELL CONTRACTOR and two Nicholas trailers and slugcatcher load 1988, boxed and good condition £30 - 50

371 - A CORGI CLASSIC "WYNNS" 31009 Diamond T Ballast x 2 24 wheel girder trailer with boiler, load and highwaymen, ballast boxed and very good condition and a Corgi classics Budding Britain number 7702 Wimpey Scammell constructor x 2 and girder trailer £40 - 60

372 - A CORGI CLASSICS PICKFORDS COMMEMORATIVE SET number 55201, boxed and good condition and two Corgi classics, Eddie Stobart Foden S21 Mickey Mouse with trailer and a transcontinental tilt trailer, boxed, good condition, road haulage van, Stobart calendars, quantity £40 - 60

373 - A CASED SYKES HYGROMETER by Loftus of London £80 - 120

374 - A MARTINGALE WITH A PIERCED ROUNDEL BRASS WITH A BELL SWINGER another with a heart shaped motif, a pair of shaped rectangular brasses stamped with lions, two crescent moon brasses and thirteen others £40 - 60

375 - WORLD WAR II MEDALS comprising 1939/1945 Star, Africa Star, France and Germany Star, Defence and War medal and territorial medal to driver E W Williamson Royal Signals together with a quantity of wartime memorabilia including postcards, maps of Antwerp and Brussels, pay book, a small quantity of English, French and German wartime souvenirs and three watercolours done by driver Williamson, Cheshire Yeomanry entitled variously Cheshire yeomanry Gunners and Damour, Syria 9" x 11" SS Maloga 21,000 tonne's embarking the yeomanry in the Suez Canal October 1944 6½" x 9½" and the third inscribed Cheshire Yeomanry Machine Gun Troupe Palestine 1940 6½" x 9½", wartime French Belgian Syrian bank notes and two Imperial Russian notes £125 - 175



Lot 376

376 - A POND YACHT three masted with a simulated oak plank deck, central section with a glazed roof with weighted rudder on a later stand 39" overall 45" long 51" high

See illustration £100 - 150

377 - AN EARLY 20TH CENTURY LIVE STEAM ENGINE with a 6" spoked wheel, visible piston raised upon a plinth base with a copper cylindrical tank with adjoining chimney raised upon a plinth base 19" x 16" See illustration £100 - 150

378 - A VICTORIAN POSSIBLY OLIVE WOOD JEWELLERY BOX with a hinged cover enclosing a divided interior above a hinged front with three frieze drawers raised upon a plinth base 8" x 7½" x 6½", a Victorian walnut box enclosing a fan with wooden panels with black silk and painted frieze and a pair of ivory and gilt metal glove stretchers, a leather hinged jewellery box centred with a landscape oval with a detachable try (4) See illustration £40 - 60

379 - A VICTORIAN ROSEWOOD AND MOTHER OF PEARL INLAID JEWELLERY BOX the hinged cover enclosing a detachable try 10" wide and a similar larger box together with a small collection of costume jewellery and lace (2) £30 - 50



Lot 377



Lot 378

380 - A CEYLONESE HARDWOOD BOX with a rectangular hinged cover, the centre with a roundel carved with an elephant enclosed by leaves 4½" x 14" x 10½" £40 - 60

381 - AN EARLY 20TH CENTURY GALLOPER ROCKING HORSE, dapple grey raised upon a tressil base, 39" high x 48"

See illustration £100 - 150



Lot 381

382 - A EDISON GEM PHONOGRAPH serial number G132178 circa 1903 with an adjustable reproducer arm, gilt painted within a laminated domed wooden case, carrying handle 8¼" x 10" See illustration £40 - 60



Lot 382

383 - A GEORGE III INLAID MAHOGANY TOILET MIRROR the oval plate enclosed by lyre shaped uprights supported on a plinth base and enclosing two frieze drawers inlaid with boxwood and ebony checkering raised upon front brass claw and ball feet 23½" x 18" x 8" £80 - 120

384 - A VICTORIAN CORAMANDEL BRASS DECORATED SEWING BOX the rectangular hinged cover with gilt brass strap work inset with coloured glass roundels, padded interior for sewing, requires restoration 5" x 12" x 9" £50 - 80

385 - A GEC BRASS COATED CANDLESTICK TELEPHONE AND RECEIVER with a cylindrical column stamped GEC Made in England, Bakelite ear pieces 12" £80 - 120

386 - A LARGE PEWTER CHARGER 18th century stamped London with a folded rim 20" £100 - 150

387 - A MODEL OF THE CUTTY SARK 20th century with a blue, red and yellow painted hull, simulated timber board deck with brass rails, ships wheel, brass pipes, transfer label Cutty Sark, London 29" high x 43" maximum See illustration £50 - 80



Lot 387

388 - A BRONZE MODEL OF RMS QUEEN MARY, limited edition, the metal used in this model originates from the ships propeller, number 63 from an edition of 1,000 raised on a hardwood plinth 9½", a model of a liner, a Royal Doulton limited edition plate Queen of the Seas by R Huxley, Fred Olson Cruise Line Black Watch plaque and model of a canal boat painted John Skinner O.C. 5565 27", an oak ink stand of rectangular form with two glass inkwells, a blotter and one other item £40 - 60

389 - A FRANKLIN MINT PRECISION MODEL OF A 1911 STANLEY STEAMER, a 1938 Alvis 4.3 litre, a 1907 Rolls Royce the Silver Ghost and a 1948 MGTC Roadster (4) £40 - 60

390 - MARINE INTEREST A COLLECTION OF TEN PHOTOGRAPHIC REPRODUCTIONS including Pyre Wansbeck Trentino and an oil painting by A.Game Steamer in Choppy Seas, oil on artists board 16" x 20" £20 - 40



Lot 396

391 - A FRANCIS BARKERM 73 POCKET COMPASS, PYSER'SGI LTD, 2½" in outer leather case 20th century. £40 - 60

392 - AN EXTENSIVE COLLECTION OF MAINLY POST WORLD WAR II STAMPS with a strong GB section £30 - 50

393 - A PATINATED BUST OF A GENTLEMAN 19th century, raised upon a circular plinth with leaf and shell moulded wall bracket, the bust 27" overall including stand 40" See illustration £80 - 120

394 - A PAIR OF VICTORIAN DECORATED METAL FIGURES "Classical Maidens" each supporting a two handled vase raised upon a shaped circular base 14" £50 - 80

395 - A HAND HELD STEREOSCOPIC VIEWER together with three volumes of Underwood and Underwoods "The South African War Through the Stereoscope" £40 - 60

396 - A VICTORIAN GILT BRONZE INKWELL the shaped pen tray decorated with lizards, insects and flowering branches, the inkwell with a foliate cover applied with a lizard handle, flanked by lilies, a conforming match box holder raised upon a circular flowering branch stand and a conforming blotter (3) See illustration £80 - 150



Lot 399

397 - A BRONZE BUST, LORD ROBERTS head and shoulders raised upon an oval plinth 11" high
See illustration £50 - 80

398 - AN EDWARDIAN APRON WITH TWO FRIEZES WORKED WITH FOLIATE DECORATION, selection of embroidered linen, table mats and three large linen table cloths £40 - 60

399 - A VICTORIAN BLACK SILK AND APLIQUE LADIES GOWN with a frilled collar 52" high *See illustration* £40 - 60

400 - A VICTORIAN TURTLE SHELL 15"
See illustration £100 - 150



Lot 400

401 - A PAIR OF CONTINENTAL PATTERNATED COMPOSITION FIGURES OF CLASSICAL MAIDENS each scantily clad standing beside a truncated tree raised upon a shaped plinth (2) 44½" £100 - 150

402 - AN ASHFORD DOG WHIP, WITH GREYHOUND HORN WHISTLE AND HANDLE circa 1900 12" £50 - 80

403 - AN ANTIQUE HARRIER WHIP, BRASS MOUNTED WHISTLE with belt loop on bamboo shaft 11" £50 - 80

404 - A STAG'S HORN HANDLED HUNTING WHIP complete with lash and thong, plated mount £30 - 50

405 - A LARGE BRONZE GREYHOUND BY PAUL JENKINS from a limited edition of 150 pieces 5" high £100 - 150

406 - A BRONZE STANDING PHEASANT BY TOM MACKIE signed with initials 3½" high.
See illustration £80 - 120

407 - A BRONZE JUMPING FOX OVER A MOUSE BY JAN SWEENEY, 4½" high.
See illustration £80 - 120

408 - A PAIR OF BRONZE JACK RUSSELS BY ROBERT CRUTCHLEY 3½" £50 - 80

409 - EARTHENWARE MODEL OF A FOX TERRIER with moulded coat, splashes of black and brown 9" high, *See illustration* £20 - 40

410 - A ROYAL DOULTON HUNTSMAN style 3 designed by M Nicoll 7½" issued 1974 to 1979.
See illustration £150 - 250

411 - TWO ROYALE STRATFORD STIRRUP CUPS, TERRIER AND BULLDOG each signed circa 2005, a Royal Doulton Frankie Dettori The Magnificent Seven, Ascot 1996 limited edition tankard number 619 (3) £100 - 150



Lot 412

412 - RACING INTEREST. A VICTORIAN BRASS BOX DECORATED WITH A HORSE RACING SCENE 2½" x 8½" and a Victorian brass matchbox holder, the hinged cover decorated with a horse and rider 1½" x 2½"

See illustration £80 - 120

413 - A VICTORIAN BRASS COURSING TOBACCO TIN circa 1900, with two hinged covers, striker and matches 5" and a Cheshire Beagles Christleton hares pad 1931 (2) £40 - 60

414 - A BRONZE LABRADOR SIGNED MICHAEL SIMPSON, 25 of an edition of 100, signed, 4" £40 - 60

415 - A BRONZE PHEASANT SIGNED MICHAEL SIMPSON, No: 70 of an edition of 150, 4" £40 - 60



Lot 416

416 - A PAIR OF VICTORIAN SNOOKER SIGNS "Gambling and Bad Language Strictly Prohibited" and "Gentlemen Please Use the Rest" each 3" x 12" *See illustration* £30 - 50

417 - A VICTORIAN OAK SNOOKER SCORE BOARD with a shaped top above an octagonal rotating board and an indicator, slate board above a revolving board and a brass rail, plinth base 24" x 38" impressed 1742 stamped Orme and Sons.
See illustration £80 - 120



Lot 417



Lot 427

418 - A VICTORIAN BUR WALNUT AND MOTHER OF PEARL INLAID SEWING BOX the rectangular hinged cover inlaid with an initialled roundel the detachable compartmentalised padded tray with sewing implements 5½"x12"x9" £80 - 120

419 - A LEATHER MARTINGALE with two bell swingers within pierced surrounds, crescent moon, two others, a 2nd strap of four with a bell swinger, another centred with a locomotive, five other martingales all applied with brasses, £80 - 120

420 - A COLLECTION OF SINGLE HORSE BRASSES some on martingales including crescent moon and flower, prancing stallion (14) £50 - 80

421 - A COLLECTION OF MARTINGALES with applied horse brasses including crescent moon, shield (8) a similar group of nine including prancing lion, crescent moon, acorn (9) £50 - 80

422 - THREE MARTINGALES including one applied with shields, ovals, moons, two shaped brasses on a martingale with a wheat sheaf and lion and one other (3) £40 - 60

423 - A PAIR OF LEATHER RIDING BOOTS complete with wooden trees and chrome spurs. £40 - 60

424 - A VICTORIAN OVAL WOOD AND COMPOSITION MIRROR with a leafy cresting 23½" £40 - 60

425 - A DRESS HAT FOR A MAJOR IN THE R.A.P.C. and a second senior officers hat £20 - 30

426 - A LIGHT INFANTRY OFFICERS EARLY 20TH CENTURY SWORD leather scabbard, damaged steel scabbard and leather case. £40 - 60

427 - A IVORY AND RED STAINED IVORY CHESS SET 32 PIECES See illustration £50 - 80

428 - A ROLLEIFLEX CAMERA with a Franke & Heidecke lens within an outer leather case with accessories, a quantity £50 - 80

429 - A VICTORIAN BUR WALNUT AND BRASS INLAID DRESSING BOX the hinged cover with brass banding enclosing a blue velvet interior with divided compartments with three glass scent bottles, two with plated mounts, two smaller bottles, one damaged, within a detachable tray enclosing five plate mounted lidded boxes, a mother of pearl and silver bladed pen knife and other implements, above a frieze drawer with divisions 7" x 12" x 9" See illustration £50 - 80

BOOKS

430 - ROWLANDSON "DOCTOR SYNTAX, LOSING HIS WAY", COLOURED ENGRAVING drawn and etched by Rowlandson and 19 similar prints (20) £40 - 60

431 - JOHN H COOKE THE DIAMOND JUBILEE IN CHESHIRE together with the names of all the deputy lieutenants, magistrates and councillors, Mackie, Warrington 1899 number 2 of a Crown Phono edition of 50 copies £50 - 80

432 - J C KNOWLSON "THE COMPLETE COW-LEECH OR CATTLE DOCTOR BEING A TREATISE ON THE DISORDERS OF HORNED CATTLE" Otley 1820 £50 - 80

433 - R A LYLE "ROYAL NEWMARKET" ILLUSTRATED BY LIONEL EDWARDS R.I., LONDON PUTNAM & COMPANY 1ST EDITION, Alken The Beauties and Defects in a figure of the horse London James Tovey 1881 (2) £40 - 60

434 - SIR DELVES BROUGHTON, BART RECORDS OF AN OLD CHESHIRE FAMILY, A HISTORY OF THE LORDS OF THE MANOR OF DELVES OF UTTOXETER AND OF DODDINGTON IN CHESHIRE number 56 of an edition of 110 copies £50 - 80

435 - HENRY TEESDALE "NEW BRITISH ATLAS" containing a complete set of county maps, England, Ireland, Scotland and South Wales, the whole carefully revised and corrected to the year 1829, London published Henry Teesdale 302 Holborn, back detached and sellotaped £400 - 600



Lot 437

- 436 - KNIGHT CHARLES THE WORKS OF SHAKESPEARE IMPERIAL EDITION** with illustrations on steel, in two volumes London Virtue V & Company Limited, red and gilt Morocco bindings, each 15" x 11½" £100 - 150
- 437 - A MAP, CESTRIA (VULGO CHESTER) BRAUN AND HOGENBURG CHESTER ANGLIA HAND COLOURED DOUBLE PLATE** with crests 16" x 20" overall, See illustration £100 - 150
- 438 - A COLLECTION OF AUTOGRAPHS** including Joan Crawford, Clark Gable, Jack Buchanan, Don McCorkindale, Tommy Pardoe, Maurice Chevalier circa 1927, Claudette Colbert, signed from the RMS Aquitania New York, Clark Gable also signed HMS Corinthian, New York £100 - 150
- 439 - A 1974 MCC TOUR SOUVENIR PROGRAMME WEST INDIES V ENGLAND IN JAMAICA** autographed photographs including Clive Lloyd, Gary Sobers, Holder, an autograph book including cricketing interest England 11 1963, Rest of the World 1967, other celebrities including Ena Sharples and Stan Ogden, The Archers, Michael Parkinson, Tommy Cooper, Ernie Wise, Eric Morecambe, Coco the Clown, three others albums, Richard Daft, Kings of Cricket, a wool work bag £40 - 60
- 440 - MASSEY FRANK E. ESQ LATE OF POOLE HALL, NANTWICH PORTRAIT SKETCHES OF CHESHIRE HUNTING MEN** from 1850 to 1890 George Faulkner and Sons, Deansgate Press 1903, 41 plates, red and green cloth with gilt crest 15" x 11" £80 - 120
- 441 - "CHESHIRE CATS AND CHESHIRE CHEESES",** by Tuff Skin, illustrated by Hard Hyde with numerous illustrations Cheshire sporting characters including Lord and Lady Daresbury, Eric Midwood, old Joe Lewis, Gilbert Cotton, Joe Bumphrey, Mrs Hamilton Carter and others. £80 - 120
- 442 - A COLLECTION OF PHOTOGRAPHS, POSTCARDS** including German Rapide aircraft, Liverpool, Eiffel tour souvenirs 1891, 16 stereoscope cards, quantity £40 - 60
- 443 - A MAP OF NORTH WALES BY EMAN BOWEN PRINTED FOR SAYER & BENNETT, THREE VIGNETTES,** framed, 17"x21" £80 - 120
- 444 - A MAP OF CHESHIRE, SAXTON HOLE,** hand coloured, circa 1640, 10"x12" £80 - 120
- 445 - PAGET GUY "LIFE OF FRANK FREEMAN, HUNTSMAN"** 1949, Chaworth Musters, The Foxhunters Birthday Book, Peter Biegel Booted and Spurred and Anthology of Riding and Caldecotts pictures and songs (4) £40 - 60
- 446 - JOHN PLAYER CIGARETTE CARDS** including film stars, third series, RAF badges, Coronation series ceremonial dress, birds and their young, military uniforms, other boxed cards including animals of the countryside, cycling, quantity of cards, some in albums, an album of postcards including London Baines father frustrated ingenuity £40 - 60
- 447 - ORMEROD GEORGE HISTORY OF CHESHIRE SECOND EDITION Folio 1882** special large paper copy, bound in buckram in six volumes, plates and pedigrees with most of the initial letters and coats of arms, hand coloured £300 - 400
- 448 - BAINES AND FAIRBURN LANCASHIRE AND CHESHIRE PAST AND PRESENT** four volumes, illustrated with steel engravings, cloth elaborately gilt and Baines E History of the County Palatine and Duchy of Lancaster, two volumes, original green cloth, circa 1870 £80 - 120
- 449 - TAYLOR, HENRY OLD HALLS IN LANCASHIRE AND CHESHIRE 1884,** cloth, spine repaired, Philip's N Views of the Old Halls in Lancashire and Cheshire 1893, folia 28 plates £100 - 150
- 450 - RICHARDS R. OLD CHESHIRE CHURCHES 1947,** with Croston James Historic Sights of Lancashire and Cheshire 1883, spine damaged £50 - 80
- 451 - MOSS FLETCHER, PILGRIMAGES TO OLD HOMES,** five volumes from the series, one a reprint £50 - 80
- 452 - HISTORIC SOCIETY OF LANCASHIRE AND CHESHIRE.** 70 volumes from the series published between 1888 and 2011 £200 - 300
- 453 - GREENWOOD A COUNTY MAP OF ESSEX, AND WARWICK** each with vignettes 25½" x 31½" (2) £40 - 60
- 454 - GREENWOOD, A COUNTY MAP OF LANCASTER, AND A COUNTY MAP OF CHESTER (2)** £40 - 60
- 455 - HAKLUYT SOCIETY PUBLICATIONS.** Sets and part-sets published 1970's-1990's. Hardbacks all with dust wrappers (23) £80 - 120
- 456 - HAKLUYT SOCIETY PUBLICATIONS.** Individual volumes published 1970's-1990's. Hardbacks all with dust wrappers (28) £100 - 120
- 457 - THE CHARTS AND COASTAL VIEWS OF CAPTAIN COOK'S VOYAGES** three volumes set pub by Hakluyt Society 1988-1999 with dustwrappers £250 - 300
- 458 - SIR JOHN ROSS. NARRATIVE OF A SECOND VOYAGE IN SEARCH OF A NORTH WEST PASSAGE** 1st edition. Pub 1835. 1 volume only (appendix volume not included). A rebound copy with slight damage to one plate. £500 - 700

- 459 - R HAKLUYT THE PRINCIPAL NAVIGATIONS, VOYAGES AND DISCOVERIES OF THE ENGLISH NATION** pub 1965. 2 volume set lacking dustwrappers. T Bowrey. A Geographical Account of Countries Round the Bay of 1669-1679 Bengal pub 1905. The Diary of A J Mounteney Jephson pub 1969. R H Major. Early Voyages to Terra Australis pub 1859. B S Ingram. Three Sea Journals of Stuart Times pub 1936 (5) £200 - 250
- 460 - HAKLUYT SOCIETY SERIES 3** Volumes 1-21 published 1999-2009, all with dustwrappers (21) £150 - 200
- 461 - HAKLUYT SOCIETY.** Sets, part sets and individual volumes published 1930's-1970's (44) £200 - 250
- 462 - HENRY FRY. HISTORY OF NORTH ATLANTIC STEAM NAVIGATION** 1st edition pub 1896 together with sundry volumes on naval history (23) £70 - 100
- 463 - THE JOURNALS OF CAPTAIN COOK.** 4 volume set pub Cambridge UP/Hakluyt Society 1967-68. Lacking dustwrappers. J G Beaglehole. The Life of Captain Cook. 1st edition pub 1974 - no dustwrapper (5) £200 - 250
- 464 - VARIOUS VOLUMES** published by Ashgate and the Sclar Press for the Naval Record Society 1990-2010 (27) £200 - 250
- 465 - VARIOUS VOLUMES** published by Navy Record Society 1964-1979 (30) £200 - 250
- 466 - VARIOUS VOLUMES** published by Navy Record Society 1895-1919. 1st editions and reprints. Sets, part sets and individual volumes including "Letters of Lord Barham" three volume set, 1st edition (29) £300 - 350
- 467 - VARIOUS VOLUMES** published by Navy Record Society 1920-1958. Sets, part-sets and individual volumes. 1st editions and reprints (34) £300 - 350
- 468 - JOHN MCLEOD VOYAGE OF HIS MAJESTY'S SHIP ALCESTE** 2nd edition pub 1818. Rebound copy £100 - 150
- 469 - W M JAMES THE NAVAL HISTORY OF GREAT BRITAIN.** 6 volume set pub Conway 2002 (with dustwrappers) S Plimsoll. Our Seaman 1st edition pub 1873 together with sundry volumes of naval interest (16) £80 - 100
- 470 - CAPTAIN JAMES COOK.** The Three Voyages of Captain James Cook. Reprint pub by William Smith 1842. 2 volume set in worn condition. W S Lindsay. History of Merchant Shipping & Ancient Commerce. 4 volume set pub 1874-1876. In worn condition (6) £70 - 90
- 471 - C MCARTHUR THE SCALE OF MEDICINES WITH WHICH MERCHANT VESSELS ARE TO BE FURNISHED** 5th edition pub 1865 together with sundry volumes of naval interest (34) £30 - 50
- 472 - F A STEWART "HUNTING COUNTRIES"** COLLINS, PALL MALL, LONDON copyright 1935 with numerous coloured plates £40 - 60
- 473 - CHARLES DICKENS. NICHOLAS NICKLEBY** 1st edition, mixed issue, pub 1839. half leather binding with marbled boards £100 - 150
- 474 - THE IMPERIAL SHAKESPEARE** 4 volume set pub Virtue. Undated - c1900. Decorated bevelled boards - numerous plates £30 - 50
- 475 - BISHOP BURNET HISTORY OF HIS OWN TIME** 2 volume set 1st editions pub 1724-1734. Full leather bindings - re cased and re-backed. £120 - 150
- 476 - R HOLMES. QUEEN VICTORIA** 2 volume limited edition set pub 1897. Superbly bound in full Morocco. Text volume in red Morocco, plate. Volume in maroon morocco £180 - 200
- 477 - GOETHE. FAUST** Translated by A Hayward, illustrated by Will Pogany. Undated C1930. M St Clare Byrne (Intr). The Elizabethan Zoo. Limited Edition of 525 copies pub 1926. E Everard. A Bristol Printing House. Undated - c1900. Superbly illustrated. C Johnson & H Jenkinson. English Court Hand AD1066 to 1500. Plate volume only. Pub 195 (4) £100 - 150
- 478 - H G HUTCHINSON (INTR) BRITISH SPORTS AND SPORTSMEN OF THE PAST** 2 volume limited edition set of 1000 copies, undated - C1890. Full red leather binding. Earl of Suffolk (edit). The Encyclopaedia of Sport. 2 volume set pub 1897 (4) £100 - 150
- 479 - J LEWIS BONHOTE BIRDS OF BRITAIN.** 1st edition pub A & C Black 1907 together with other related titles (12) £70 - 100
- 480 - A WAINWRIGHT THE OUTLYING FELS OF LAKELAND.** True 1st edition pub 1974 in unclipped dustwrapper (£1.50) T Rose, Westmorland, Cumberland and Northumberland illustrated. Vol 12 pub 1832 bound in half leather together with 10 other titles of Lake District interest (12) £150 - 180
- 481 - E BATESON A HISTORY OF NORTHUMBERLAND** Vols 1 & 2 pub 1893-95. J A Picton. Memorials of Liverpool. 2 volume set pub 1875, half bound in red leather together with three other topographical works (7) £120 - 150
- 482 - A LARGE COLLECTION OF WILLS, INDENTURES AND INVENTORIES** the lot within a domed hinged trunk £40 - 60
- 483 - GEORGE RILEY SCOTT THE HISTORY OF COCK FIGHTING BY CHARLES SKILTON LIMITED, LONDON** number 132 of an edition of 1095 numbered copies £60 - 80
- 484 - ORMEROD GEORGE ESQ., LL.D.F.R.S. 2ND EDITION BY THOMAS HELSBY ESQ IN THREE VOLUMES,** George Routledge 1882. £150 - 200

485 - HERBERT ATKINSON COCK FIGHTING AND GAME FOWL, TEN PLATES IN COLOUR AND TWELVE IN BLACK AND WHITE George Baynton 1938, presentation copy inscribed Oxford spread won by dark red cock at the Midland game Club 1947 £80 - 120

492 - SIR WILLIAM RUSSELL FLINT "THREE GROUPS, VIVIERS", REPRODUCTION IN COLOUR signed by the artist, framed, 17½" x 23¼" See illustration £200 - 300

PRINTS



Lot 490

490 - BERYL COOK "ELVIRAS CAFE" SIGNED LITHOGRAPH number 278 from an edition of 850 published by Alexander Gallery, Bristol, England 18½" x 14", See illustration £200 - 300



Lot 493

493 - SIR WILLIAM RUSSELL FLINT "VARIATIONS ON A THEME" signed in pencil, published by Frost and Read Limited 19" x 25" framed. See illustration £200 - 300

494 - SIR WILLIAM RUSSELL FLINT FIGURES STANDING ON A RIVER BRIDGE BESIDE A CASTELLATED BUILDING reproduction in colour number 65 from an edition of 650 copies unsigned, framed 16" x 21" See illustration £100 - 150



Lot 491

491 - SIR WILLIAM RUSSELL FLINT BEAUTY ON A BEACH, BEACHCOMBING REPRODUCTION IN COLOUR number 64 from a limited edition of 650 copies unsigned, framed 16" x 21" See illustration £80 - 120



Lot 494

495 - SIR WILLIAM RUSSELL FLINT BEAUTIES BATHING REPRODUCTION IN COLOUR number 594 from a limited edition of 656 copies unsigned, framed 16" x 21" See illustration £100 - 150



Lot 492

496 - BERYL COOK "THE POOL PARTY" SIGNED COLOURED PRINT published by Alexander Gallery Publications, Bristol, England signed by the artist, framed 19¾" x 15¾" See illustration £200 - 300

497 - GARDE NATIONALE A CHEVAL COLOURED LITHOGRAPH, HAUTECOUR, PARIS, framed, plate No: 21, and two others No: 2 & 31, 12"x17¾" framed, and after Moreland, Midday Rest coloured print in an Hogarth frame 16"x20½" (4) £20 - 40



Lot 495

498 - OSCAR DROEGE "PINES" WOODCUT IN COLOUR signed by the artist 14½" x 10" and two companions (3) £30 - 50

499 - CLEM SPENCER ROBIN, AND A COMPANION BLACKBIRD each signed by the artist number 74 from a limited edition of 450, framed 13½" x 10" £30 - 50



Lot 496

500 - LORD CREWE OF CREWE HALL, CHESHIRE ¾ length black and white print inscribed in pencil and signed Crewe 1895 for W D Byrd, Christmas 1918 within a Hogarth style frame 28" x 22½" overall, with a label from Pawsey and Payne, 1 Berry Street, St James' Square, London, See illustration £40 - 60



Lot 500

501 - COLLECTION OF VICTORIAN FASHION PLATES INCLUDING MORNING VISITING DRESS hand coloured 6" x 4" framed, three similarly framed, and four Modes De Paris early 19th century 7½" x 5" £50 - 80

502 - WILLIAM GELDART "BADMINTON 1978" SIGNED LITHOGRAPH number 20 from an edition of 500, framed 21½" x 33½" See illustration £40 - 60



Lot 502

503 - J M W TURNER "AN ENGLISH FAIR" LITHOGRAPH printed and published by George Rowney 1884, framed 6" x 8 ¼" £20 - 40

504 - TERENCE CUNEO "THE RAISING OF THE GREEN HOWARDS BY COLONEL FRANCES LUTTRELL" signed in pencil by the artist and Luttrell coloured print 24 ¾" x 29" See illustration £40 - 60



Lot 504

505 - ROSEMARY H COATES "POINT TO POINT AND FOXHUNTING MAP" number 20 of a limited edition of 500 signed by the artist framed 21" x 16½" £20 - 40

506 - R M McPHAIL TERRIERS framed 10½" x 8" £20 - 40

507 - AFTER GELDART "SAIREY GAMP" 10 ¾" x 7" £20 - 40

508 - A COLLECTION OF FOUR 19TH CENTURY SILHOUETTES Peter Rylands, Massey Hall, Thelwall, head and shoulders highlighted in gilt 4½" x 3½", John Rylands, Warrington, Bewsey House, Dorothy Kirkland and Jane Highland, framed and a mezzo tint "In the Country" 8" diameter, framed. £50 - 80

509 - CECIL ALDIN LADY STANDING OUTSIDE A COUNTRY DWELLING signed by the artist 18" x 14" framed £100 - 150

510 - CECIL ALDIN PLAYING BALL WITH THE HOUNDS signed coloured print, framed 17½" x 14" £80 - 150

511 - PETER SCOTT "FLIGHT OF GEESE" COLOURED PRINT signed by the artist in pencil, published by Arthur Ackermann, London and copyright 1947 15½" x 22" framed. See illustration £50 - 80



Lot 511

512 - AFTER A PAINTING BY CECIL ALDIN "THE MAN IN POSSESSION" from the Illustrated London News Christmas Number 1908 framed 15" x 21½" £80 - 120

513 - AFTER DANIEL CRANE "HOUNDS OVER THE WALL" signed, limited edition number 234 of 250 framed 8" x 9" and Helena Maguire Hound and Pups, photogravure circa 1890 framed 3½" x 2½" (2) £40 - 60

514 - JAN SWEENEY "BOXING HARES EARLY MORNING" signed limited edition number 3 of 75 copies 13½" x 20½", Cecil Aldin "A Gentleman of Character" reproduction print 18" x 16½" (2) £40 - 60

515 - A FRENCH COLOUR ENGRAVING "SPANIELS" 5¼" x 14¾" and a companion Pointers and Other Dogs, each framed £20 - 40

516 - GEORGE VERNON STOKES "POODLE AND CAT" LITHOGRAPH circa 1925, framed 11" x 8" and Gaston Gelibert "Setter Flushing Pheasants" circa 1893 framed 22" x 16½" (2) £20 - 40

517 - SUSAN CRAWFORD "WE THREE KINGS" including Red Rum reproduction framed 16" x 25¾" and an engraving Labrador Retrievers After G V Stokes circa 1929 (2) £20 - 40

518 - CECIL ALDIN "GREYHOUND RACING TONIGHT" a comical postcard, framed £10 - 20

519 - FRANK PATON "EVERY DOG HAS ITS DAY" PENCIL SIGNED ETCHING circa 1899, framed 7½" x 9½" £60 - 80

520 - FRANK PATON "THE GOOD OLD DAYS" SIGNED ETCHING circa 1899, framed 7½" x 9½" £60 - 80



Lot 526

521 - FRANCES WHEATLEY RA CRIES OF LONDON a series of 13 coloured prints by Vendramini and others each within Hogarth style frames 13½" x 10½" £50 - 80

522 - SPY, "ALL SOULS" SIR WILLIAM ANSON BART, MP taken from Vanity Fair 1901, Vincent Brooks lithograph, framed 14½" x 8½", others including Charlie, Captain Charles Harold Lagfield Beatty DSO East Sussex, Duke of Wellington, Strathfieldsaye, Earl of Clarendon, The Lord Chamberlain, a Liberal Imperialist The Right Honourable Edward Gray MP 1903 (6) £40 - 60

523 - AFTER CECIL ALDIN "THE BLACK MOOR VALE" SPORTING PRINT, reproduction, two similar prints each 14½" and a set of prints After Lionel Edwards including a hunting song, six prints framed as three, 11"x16½" £40 - 60

524 - AFTER LIONEL EDWARDS "POINT TO POINT" a series of six coloured prints, framed as three £40 - 60

525 - GEORGE BAXTER, "THE LOVE LETTER", coloured print, framed, 14½"x10½" and a companion, a pair, a Baxter print "His Royal Highness Prince Albert" No: 204, 6"x4" framed, a companion, (4) £40 - 60

526 - HENRY CALVERT "THE WYNNSTAY HUNT" engraved by W T Davey, mixed method contemporary colour, mid 19th century 19"x31" framed, See illustration £400 - 600

527 - CECIL ALDIN "THE ATHERSTON HUNT", COLOURED PRINT signed by the artist lower left hand corner within an oak frame, 15½"x26½" See illustration £200 - 300



Lot 527

528 - ROLF HARRIS "INTO THE SUN" SIGNED REPRODUCTION ON CANVAS number 172 of an edition of 195, signed by the artist 20" x 30"
£400 - 600

529 - CHOLMONDELY CASTLE COLOURED PRINT, framed, 7½"x9½", After Snaffles "The Grand National the canal turn" reproduction, framed, After G Martin "Coaching Scene", E Williamson, Lower Brock Hampton House watercolour, signed and the Coniston Hunt (5)
£30 - 50

530 - MARINE RELATED, EIGHT VICTORIAN ENGRAVINGS including West India Docks, After S Owen, engraved by W Hook 1811 6½" x 6½" framed, after W H Bartlett the Mersey at Liverpool 6" x 8", P C Dibden Valetta from the Marsa Musceit, Malta engraved by J Tingle, framed, After D Small four others (8)
£40 - 60

531 - AFTER W ROBINSON "BARTON, CHESHIRE" LITHOGRAPH 6" x 8" and two companions (3)
£20 - 40

532 - AFTER W ALEXANDER F.R.A. NORTH WEST VIEW OF NANTWICH CHURCH engraved by Byrne framed 7" x 9"
£10 - 20

533 - G PICKERING "BRIDGE STREET ROW, CHESTER 1851" COLOURED LITHOGRAPH framed 3½" x 8" and a pair of racing prints each framed 11" x 15"
£20 - 40

535 - ALDIN CECIL DOGS OF CHARACTER 1928 and Standfast Sporting Library (Coursing) (2)
£40 - 60

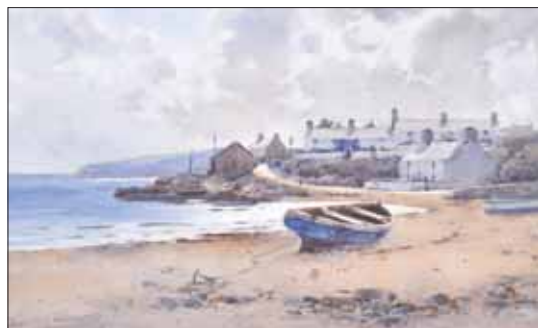
536 - HAROLD RILEY "HRH PRINCE ALEXANDER" inscribed by the artist To David and dated 75 14" x 11½"
£40 - 60

537 - HORSE DRAWN CARRIAGE WITH ATTENDANT AND DOGS oil, possibly printed
£40 - 60

WATERCOLOURS

543 - WARREN WILLIAMS "CEMAES BAY, NORTH WALES" watercolour, signed, framed, 7½"x11½" See illustration
£500 - 800

544 - ALBERT POLLITT 1885-1926 "RIVER VALLEY, LLANDUDNO", watercolour, signed, framed 11"x17"
£200 - 300



Lot 543



Lot 545

545 - JOHN McDOUGAL COASTAL LANDSCAPE WITH YACHT signed and dated 1921, framed 13¾" x 20½"
See illustration
£100 - 150



Lot 546

546 - 19TH CENTURY ENGLISH SCHOOL "EVE" framed 12" x 8" See illustration
£100 - 150

547 - T B HARDY "ON THE HAGUE COAST" WATERCOLOUR signed and dated 1874, Thomas Agnew and Sons label verso 17" x 28½"
See illustration
£500 - 800

548 - A VICTORIAN PORTRAIT MINIATURE OF A GENTLEMAN head and shoulders wearing black coat 3¼" oval framed, a second silhouette and a print of a gentleman head and shoulders within an ornate frame.
£50 - 80



Lot 547



Lot 550

549 - A CATANO "FIGURES WALKING ON A QUITE PATHWAY IN AN ALPINE LANDSCAPE" watercolour signed See illustration 9¼" x 13", and a companion a pair (2) "Stags in a Highland Landscape" £100 - 150

550 - D.M. & E. MALDERSON "COULTER'S HILL", study of racehorse in a country landscape, signed and dated 1931, 14"x18½"
See illustration £100 - 150



Lot 551

551 - CIRCLE OF WYLIE "ROWING OUT TO SEA" signed and dated 1913 watercolour 9" x 17", framed See illustration £80 - 120

552 - A COAT OF ARMS OF THE RED, THE EARL OF NORTHESK WHO COMMANDED BRITANNIA 100 GUNS AT TRAFALGAR October 21st 1805 11" x 12½" and a religious motto (2) See illustration £40 - 60

553 - G L GRANDY "PHEASANTS IN WINTER" signed and dated 1990, framed 9¾" x 13" and three companions similarly framed (4) £40 - 60



Lot 552

554 - MAUD HOLLYER, "TOO PRESSING ATTENTION" WATERCOLOUR, signed, framed 19" x 13½" See illustration £150 - 200

555 - W LAWTON "NORTH WALES COASTLINE" WATERCOLOUR signed 7½" x 17½" See illustration £40 - 60



Lot 555

556 - WILLIAM MATTHISON SHEEP AND SHEPHERD IN AN AUTUMNAL LANDSCAPE signed 19" x 28" See illustration £300 - 400



Lot 556

557 - J KENT RICHARDSON R.S.W. "IN WESTER ROSSHER" inscribed verso Sincere Wishes for all time, J Kent Richardson 6¾" x 9½"
See illustration £40 - 60

558 - PAUL SANDBY MUNN "LEG BERTHWAITE, ST JOHNS VALE, KESWICK", inscribed verso by the artist on the road between Amberside and Keswick looking into St Johns Vale, 9¼"x14" signed and dated 1805 £200 - 300

559 - DONALD L RAYNER FRCA "OLD HALL FARM, MARPLE" WATERCOLOUR 13" x 17½"
£40 - 60



Lot 557



Lot 561

560 - SARAH CLEGG "WHIPPET" signed watercolour dated 2007 5" x 7" framed £120 - 160

561 - H W HAGATE "CHILDREN WITH A DOG WITH POULTRY, WITLEY, SURREY", watercolour, signed 8³/₄"x11" and two companions, Abinger Hammer (3) *See illustration* £50 - 80

562 - A.M. MAKINSON "RIVER LANDSCAPE", watercolour, signed, framed, 11¹/₂"x8¹/₂" £40 - 60

563 - L LEWIS "RIVER LANDSCAPE WITH CATTLE WATERING", watercolour, signed and dated '79, framed, 9"x14" £40 - 60



Lot 567

565 - ALSTON EMERY "FLOWER STALL, TOWER HILL, LONDON", watercolour, signed, 20"x9" framed, K Broomhall "Grenadier", watercolour, 11"x8", three companions and three other pictures (8) £40 - 60

566 - J B MINNS "DUNSTON WITH FIGURES OUTSIDE A DWELLING" WATERCOLOUR signed 7" x 9" framed. *See illustration* £80 - 120



Lot 564

564 - A LEWIS "STUDY OF A GARDEN", signed, watercolour, framed, 7"x10", Sutton Palmer Mowberry Vale by Fred Slocombe 1892 by The Fine Arts Society 22"x15¹/₂" framed, F Robson "York Minister", another, P Richards "Figure and Sheep" reproduction No: 140 of 500 and After Arthur Elsley coloured print framed, (6) £40 - 60



Lot 568

567 - JEMIMA BLACKBURN (1823-1909) "ROTTEN ROW WITH FIGURES ON HORSEBACK" INSCRIBED LONDON MAY 1857 FRAMED 5" x 7¹/₂" approximately and with Rob Fairley's book *Jemima the Paintings and Memories of a Victorian Lady* and a Malcolm Innes Gallery Exhibition Card 1999. £100 - 150

568 - SAMUEL JACKSON "ST VINCENT'S ROCKS" FROM NIGHTINGALE VALLEY, NR BRISTOL, inscribed verso, see a similar sketch at V & A Museum a article in *The Connoisseur* No: 1, 1926, framed, 8¹/₂"x10" *See illustration* £300 - 400



Lot 566



Lot 569

569 - H HAMMOND "WORKING HORSES RETURNING FROM THE FIELD WITH SHEEP GRAZING" signed, framed 12"x18"

See illustration

£300 - 400



Lot 570

570 - HENRY CHARLES FOX RBA "CATTLE WATERING IN A FARMWARD", signed and dated 1912, 21"x14"

See illustration

£300 - 400



Lot 571

571 - HENRY CHARLES FOX R.B.A. "THE END OF THE DAY", watercolour, signed and dated 1910, framed, 21"x14"

See illustration

£300 - 400

572 - PARKER HAGARTY "THE RIVER VALLEY", pastel, signed and dated 1888. framed, 16"x33"

See illustration

£200 - 300



Lot 572



Lot 573

573 - PARKER HAGARTY "FIGURES WORKING IN THE FIELD RIVER VALLEY, SHEEP GRAZING", signed pastel, framed, 16"x33"

See illustration

£200 - 300



Lot 574

574 - H MURRAY "FULL CRY", signed watercolour, 7"x9 1/2" and a companion "Run to Earth", framed. See illustration

£400 - 600



Lot 575

575 - HENRY CHARLES FOX RBA "WORKING HORSES RETURNING FROM THE FIELD", watercolour, signed and dated 1909, framed, 11"x14". See illustration

£150 - 200



Lot 576



Lot 577

576 - DAVID ROBERTON "HAYMAKING"
signed watercolour 18½"x25" framed.

See illustration

£600 - 800

577 - W MATHISON "LOGGING IN A WOODY VALLEY" watercolour, signed 13"x21", framed.

See illustration

£200 - 300

578 - ENGLISH EARLY 20TH CENTURY SCHOOL HIGHLAND LANDSCAPE indistinctly signed M.B.Peygug 9½" x 13" and a companion (2)

£40 - 60

OIL PAINTINGS



Lot 581

581 - CORNELIS VAN LEEMPUTTEN 1841-1902 "HORSES IN A STABLE WITH POULTRY"

inscribed verso "A Flemish Stable" by E Van Lemmputzen Nov 20th '79, oil on board, framed, 9"x13" See illustration

£600 - 800

582 - ENGLISH EARLY 20TH CENTURY SCHOOL MEDITERRANEAN COASTLINE OIL ON CANVAS inscribed indistinctly verso 9" x 10½". See illustration

£80 - 120



Lot 582



Lot 583

583 - ENGLISH 19TH CENTURY SCHOOL "BOATING ON THE RIVER BESIDE A THATCHED COTTAGE", oil on board,

10½"x13¾" See illustration

£150 - 200



Lot 584

584 - ENGLISH 19TH CENTURY SCHOOL "WOODSMAN WITH HIS HOUND, SHEEP RESTING IN A WOODED RIVER LANDSCAPE", oil on panel, framed, 11"x16½"

See illustration

£150 - 200

585 - THOMAS STANLEY BARBER 1891-1899 "BRIGHT WATER" signed oil on canvas, framed 11½"x9¾".

£50 - 80

586 - A 18TH CENTURY CRISTOLEUM "THE GOOD SAMARITANS" in a Hogarth style frame 8"x10" and a companion damaged.

£40 - 60

587 - MARA ABBODD CARIBBEAN BLOOMS within a border of flower heads, signed 48" x 35" framed

£100 - 150



Lot 588



Lot 589

588 - ENGLISH 19TH CENTURY SCHOOL PORTRAIT OF A GENTLEMAN WEARING A BLACK FROCK COAT unsigned oil on canvas framed 29" x 24 1/2" See illustration £150 - 200



Lot 593

589 - THOMAS GARDENER MANCHESTER 1840 A CHRISTOLEUM IN A DOUBLE FRAME signed and dated 17 1/2" x 12 1/2" See illustration £80 - 150

590 - IN THE MANNER OF J STARK "CHILDREN OUTSIDE A THATCHED COTTAGE", oil on canvas, 17"x13 1/2", framed, £80 - 120



Lot 595



Lot 597

591 - 20TH CENTURY SCHOOL "TWO SPANIELS" OIL PAINTING framed 19 3/4" x 24" £40 - 60

592 - CIRCLE OF DONALD McINTYRE COASTAL INLET WITH MOORED BOATS oil signed 10 1/2" x 16" framed £400 - 600

593 - LATHAM BARNES "HUNTER IN A STABLE", SIGNED A H OIL ON CANVAS 13 1/2" x 17 1/2". See illustration £80 - 120



Lot 598

594 - J ANTILL "COASTAL SCENE WITH MASTED VESSELS ON THE HORIZON", signed, oil on canvas, 25 1/2"x35 1/2" £40 - 60

595 - ENGLISH LATE 19TH SCHOOL "SWANS ON THE QUIET WOODLAND WATER" OIL ON CANVAS, signed, 35"x23". See illustration £80 - 150

596 - EARLY 19TH CENTURY ENGLISH SCHOOL "PORTRAIT OF A GENTLEMAN WEARING A BLACK COAT, WHITE COLLAR" oil on canvas, unsigned, framed, 29 1/2"x24 1/2" £150 - 200



Lot 599



Lot 600

597 - JAMES LONGUEVILLE "BEESTON CASTLE", OIL ON BOARD, signed
See illustration

£400 - 600



Lot 601

598 - J ZUBER CHALET'S IN A SWISS MOUNTAIN VALLEY SIGNED OIL ON BOARD framed 9" x 12³/₄".

See illustration

£100 - 150

599 - HUGH THOMPSON FIGURES ANGLING IN A RIVER VALLEY WITH A CASTLE IN THE DISTANCE, FIGURES CROSSING A BRIDGE INSCRIBED VERSO BY HUGH THOMPSON, LAKE DISTRICT OIL ON PANEL 8¹/₂" x 10¹/₂"

See illustration

£60 - 100

600 - FLEMISH INTERIOR FIGURES SEATED AT A TAVERN OIL ON METAL within a rosewood frame 9¹/₂" x 8".

See illustration

£100 - 150



Lot 602



Lot 603

601 - AFTER JACOB JORDAENS "BACCUS WITH A MAIDEN HOLDING GAME BIRDS WITH ATTENDANTS AND A HOUND" OIL ON CANVAS RELINED 11¹/₂" x 14"

See illustration

£150 - 200

602 - FLEMISH SCHOOL LADY HOLDING A PEWTER LIDDED JUG WITH A CHILD BY HER SIDE INTERIOR OIL ON BOARD 15¹/₂" x 13¹/₂" unsigned, framed. See illustration

£100 - 150

603 - HENRY WILKINSON RETRIEVER FLUSHING A PHEASANT OIL ON CANVAS signed, framed, 15¹/₂" x 25¹/₂".

See illustration

£200 - 300



Lot 604

604 - HENRY WILKINSON COCK PHEASANTS IN A WOODY GLADE SIGNED OIL ON CANVAS framed 16" x 22¹/₂".

See illustration

£200 - 300

605 - ENGLISH EARLY 20TH CENTURY SCHOOL "SKEWBALD WORKING HORSES RESTING", signature indistinct 15¹/₂" x 23¹/₂" framed, See illustration

£300 - 400



Lot 605



Lot 607

- 606 - WILLIAM EDWARDS "VILLAGE BLACKSMITH"**, oil on canvas, signed, label verso, 17½"x23½"
£100 - 150
See illustration
- 607 - A W REDGATE "CATTLE IN AN ORCHARD"**, oil on canvas, signed, inscribed verso, Hemington, Leicestershire, 11½"x17½", framed, *See illustration* £500 - 800
- 608 - MAYNARD "HAYMAKING BY THE RIVER BANK WITH A BARGE"**, signed, oil on canvas, 7½"x15½" framed. £100 - 150



Lot 609

- 609 - A LAMBERT "TRIUMPHAL ARCH PARIS"**, oil on canvas, signed, inscribed verso, 7"x9", framed and a companion 9"x7"
See illustration £50 - 80
- 610 - ENGLISH LATE 19TH CENTURY SCHOOL "TYNE DOCK, SOUTH SHIELDS"**, oil on board, inscribed verso, 7½"x17½" framed, *See illustration* £200 - 300
- 611 - MOLLY LATHAM "BURROUGH HILLS"** signed and dated 1936 label verso 19½" x 23½" framed £1000 - 1500



Lot 610



Lot 612

- 612 - CIRCLE OF LIONEL EDWARDS "THE CHESHIRE HUNT BENEATH BEESTON CASTLE"**, oil on canvas, unsigned, framed, 38"x61"
See illustration £800 - 1200
- 613 - MANOR OF LANDSEER, "SPANIELS SEATED BY A SIDE BRIMMED HAT"**, initialled RAB 1920, oil on canvas, framed, 10"x13½"
£100 - 150

BAROMETERS



Lot 620

- 620 - A GEORGE IV INLAID MAHOGANY WHEEL BAROMETER** with a 9½" silvered dial above a hygrometer, thermometer and a level signed G Bradshaw, Whitchurch, the case with a swan neck cresting, with undercut base, 43"
See illustration £150 - 200

MANTEL CLOCKS

- 625 - NO LOT**
- 626 - A FINE FRENCH REPEATING CARRIAGE CLOCK** with a 2¼" enamel dial, Roman numerals with subsidiary dials for alarm set and calendar below, striking on a bell the case with cast lions mask and leaf swan neck handle, overall chased with scrolling leaves with a shutter door with a lever to close, winding holes, the rear with six winding apertures, 6½" high including handle 3½" wide x 2½" *See illustrations* £800 - 1200



Lot 626

627 - AN EARLY 20TH CENTURY OAK MANTLE CLOCK with a 5½" silvered dial, three train movement striking on four rods within a shaped oak case 10½" £40 - 60

628 - A VICTORIAN WALNUT CASED MANTLE CLOCK with a 4" two piece dial with Arabic numerals, the two train Ungans movement striking on coiled gong, the case with a domed top with a finial, the case with fluted columns and applied with roundels raised upon a plinth base and bun feet 17" £80 - 120

629 - A VICTORIAN OAK MANTLE CLOCK with a 6" brass and silvered dial with Arabic numerals, foliate spandrels, the two train spring driven movement striking on a coiled gong the architectural case with turned finials, split baluster columns raised upon a plinth base 17" high £80 - 120

630 - AN OVAL GILT BRASS CASED CARRIAGE TIMEPIECE with a 2" white enamel dial signed JC Vickery, Regent Street, London with a platform lever escapement, the oval case raised upon toupie feet with brass key and Morocco leather carrying case, *See illustration* £80 - 120

631 - AN EDWARDIAN INLAID MAHOGANY MANTLE CLOCK with a 5" dial Arabic numerals, finger detached, the movement striking on a coiled gong within a lancet shaped case inlaid with a satinwood oval fan raised upon a plinth base and brass feet £40 - 60



Lot 630

632 - A VICTORIAN MUNICIPAL MANTLE TIMEPIECE with a 13" silvered dial, signed U. Iechter, Huddersfield with Roman numerals with a later Elliott, London fusee movement number 1485 incised EFW with a Victorian pendulum and an associated winding key, the drum case with scrolling spandrels raised upon a plinth base 20½" x 35" x 6".

See illustration

£400 - 600



Lot 632

633 - A FRENCH GILT METAL AND ONYX MANTEL TIMEPIECE with a 3" movement, surmounted by a shepherd, shepherdess and a sportsman raised upon a shaped onyx base and a plinth 11½" high £50 - 80



Lot 634

634 - A GILT BRASS CLOCK GARNITURE the Louis XV style mantle clock with a 11½" cartouche dial the two train movement striking on a bell, case surmounted with an urn above a mask raised upon curvilinear dolphin supports, 25" high and a pair of five branch candelabra each with foliate detachable sconces above a lobed vase supported on a mask base with paw feet (3) *See illustration* £100 - 150

635 - A LOUIS XV STYLE ORMOLU CLOCK GARNITURE, the clock with a white enamel dial with Arabic numerals the two train striking movement the case surmounted with an urn and flower supports above a panel decorated with masks raised upon a plinth base with scrolling feet, 24" high and a pair of conforming five branch candelabra, *See illustration* £100 - 150



Lot 635

636 - AN EDWARDIAN INLAID MAHOGANY MANTLE CLOCK with a 6" silvered dial with a chime silent in the arch, lightly engraved, the three train German movement striking on five gongs number 7339, the case with a lancet top inlaid with a satinwood fan, satinwood stringing raised upon a plinth base inlaid with an open fan and compressed bun feet 16³/₄" high.
See illustration

£150 - 200



Lot 636

637 - A JAEGER-LE COULTRE ATMOS MANTLE CLOCK with a 4¹/₂" white dial with Arabic numerals, with a visible movement and oscillating pendulum contained within a gilt metal and glazed case, approximately 9" x 7" x 5¹/₂"
See illustration

£300 - 400



Lot 637



Lot 638

638 - A VICTORIAN WALNUT MANTLE TIME PIECE AND BAROMETER the arched top with a turned finial above 3" aneroid barometer, a silvered thermometer and a 3¹/₂" dial with Roman numerals, the case and arched top applied with split baluster columns raised on a plinth base 14"
See illustration

£100 - 150

639 - AN ART DECO MARBLE AND ANIMALIA MANTEL CLOCK with a 3¹/₂" movement striking on a saucer bell the rectangular plinth surmounted with a panther with two conforming urns (3)

£80 - £150

WALL CLOCKS

640 - AN EARLY 20TH CENTURY OAK WALL CLOCK with a 6" silvered dial with Arabic numerals, the two train movement striking on a coiled gong, the case with a shaped top inlaid with lozenges and squares with glazed apertures and an undercut base, 24" high with pedulum

£40 - 60



Lot 641



Lot 642

641 - A WALNUT VENEERED AND EBONISED VIENNA STYLE WALL CLOCK with a 7½" enamel dial with subsidiary seconds, the two train movement striking on a coiled gong with a visible pendulum, two weights, the case with a shaped cresting applied with split baluster columns, undercut base 46" *See illustration* £100 - 150

642 - A BEECHWOOD AND PAINTED VIENNA STYLE WALL CLOCK with a 5½" two piece enamel dial the two train movement striking on a coiled gong with a visible pendulum the case with a shaped top above inset columns decorated with flowers and leaves with an undercut base, 24" *See illustration* £100 - 150

642a - A GEORGE V FUSEE DIAL CLOCK with a 12" dial signed Ingram Bros, Wood Green, London with Roman numerals with a single train fusee and chain movement within a mahogany case, 16" diameter. £100 - 150

LONGCASE CLOCKS

643 - A VICTORIAN LONGCASE CLOCK DIAL AND MOVEMENT, 13" enamel dial, indistinctly signed, painted with an oval in the arch of a classical maiden with a spaniel with a two train eight day bell striking movement. £50 - £80

644 - A WILLIAM IV INLAID MAHOGANY LONG CASE CLOCK with a 13" white enamel dial signed G Stephenson, Warminster with subsidiary seconds and date aperture, gilded hands, spandrels painted with flowers and an oval, a lunar calendar in the arch painted with a gentleman's country house with figures by a river, a masted man of war, the two train eight day movement with a Walker and Hughes false plate with anchor escapement, rack striking on a bell, the case with brass finial's and a shaped fluted inlaid frieze above fluted gilt metal columns, the trunk inlaid with lozenges above an ebonised inlaid door, raised upon a plinth base, well figured wood raised upon a plinth base and bracket feet 88" with two weights, pendulum, winding key and door key. *See illustration* £2,000 - £3000

645 - A CHOICE EARLY 19TH CENTURY INLAID MAHOGANY LONGCASE CLOCK, with a 14" white dial, signed T. Lees Bury, with subsidiary seconds and date dials, Arabic numerals, the spandrels painted with figures emblematic of the four seasons with a lunar calendar in the arch painted with a masted galleon and a lady holding a sickle seated by corn stooks, the two train eight day movement with Walker & Hughes false plate rack, striking on a bell, the case with a shaped top with brass finials inlaid fluted hood columns, the trunk with a shaped well figured and inlaid door above an inlaid plinth, cross banded and centred with well figured wood, flanked by canted angles, raised upon bracket feet, 96" £1000 - 1500



Lot 644

646 - A GEORGE IV OAK AND MAHOGANY CROSSBANDED LONGCASE CLOCK with a 13" white arch dial signed W Massey, Nantwich the spandrels painted with figures emblematic of the four seasons the arch painted with Daniel and the Lion, the two train eight day movement, with anchor escapement, rack striking on a bell, the case with a swan neck cresting, fluted columns the trunk with a shaped crossbanded door, fluted quarter columns raised upon a panelled plinth base, canted angles, lacking supports, 85".

£300 - 400



Lot 649



Lot 653

647 - NO LOT

648 - A GEORGE III OAK AND MAHOGANY CROSSBANDED LONGCASE CLOCK with a 12" brass and silvered dial signed in a roundel Adam Costen Kirkham, Roman and Arabic numerals, the spandrels decorated with figures emblematic of the four season with a two train eight day movement with count wheel, the case with a cavetto and dentil cornice above an inlaid frieze, gilt metal Corinthian columns the trunk with an inlaid shaped long door, quarter columns raised upon a plinth base with canted angles raised upon ogee bracket feet 82" high £1000 - 1500



Lot 654



Lot 656

649 - AN EARLY 19TH CENTURY INLAID MAHOGANY AUTOMATA LONG CASE CLOCK with a 14" enamel dial, indistinctly signed with subsidiary seconds and date hands, the spandrels painted with ladies in pursuit of the arts, arch painted with feature Adam and Eve, automata in the dial arch, figures inoperative, the two train eight day movement with anchor escapement rack striking on a bell, the hood with a cavetto cornice above an arched door, the trunk cross banded and inlaid with lozenges raised upon a plinth base, two weights, pendulum and key 76" high.

See illustration

£150 - 200

650 - A 19TH CENTURY MAHOGANY LONGCASE CLOCK with a 14" white arched dial signed Pattison, Halifax, with subsidiary seconds and date dials painted with birds and flowers the arch painted with a maiden reading a letter, the single train movement with outside count wheel striking on a a bell, the second hand rotates anti clockwise the case with a swan neck cresting, brass mounted columns, the trunk with fluted quarter columns raised upon a plinth base, 89" high.

£300 - 400

651 - A GEORGE II OAK LONG CASE CLOCK with a 11" brass dial, signed J N Stokes, Bewdley with date aperture, cast mask and leafy spandrels, single train movement with outside count wheel striking on a bell, plain oak case, a cavetto cornice above hood columns with a long trunk door upon a panelled plinth base and bracket feet 83" high. £400 - 600



Lot 659

660 - AN OAK PLANTER the timber reconstructed from the staircase at Broughton Hall, Malpas, of rectangular form on slab feet 12½" x 48" x 17" £50 - 80

661 - AN EARLY 19TH CENTURY OAK AND MAHOGANY INLAID BUREAU with a hinged fall front enclosing a fitted interior with an arrangement of eight pigeon holes and six drawers with two sliding frieze drawers the lower part with two short and three long graduated cockbeaded drawers each with brass swan neck handles raised upon a plinth base lacking feet, 38"x37¾"x19½" £150 - 200

662 - AN EARLY 19TH CENTURY OAK HIGH BACK DRESSER with an ovolo cornice above a plain frieze and three shelves enclosed back and sides the lower part with a plank top above three frieze drawers above three false drawers flanked on either side panelled cupboard doors raised upon a plinth base and bracket feet, 79"x55"x19½" See illustration £1000 - 1500



Lot 662

663 - AN 18TH CENTURY AND LATER OAK SIDE TABLE the rectangular plank top with a moulded border above a frieze carved with half round flower heads, frieze drawer raised upon turned baluster legs, side stretchers on turned feet 25½" x 33" x 20" £100 - 150



Lot 664

664 - AN EARLY 18TH CENTURY BLANKET CHEST the rectangular top with three panels above a channelled frieze, three panels each carved with lozenges enclosing flowers and leaves raised upon channelled stile feet, 26"x43½"x22½" See illustration £150 - 200

665 - AN EARLY 19TH CENTURY OAK AND MAHOGANY FREESTANDING CORNER WALL CUPBOARD with a shaped cornice above a mahogany crossbanded frieze inlaid with checkering above a pair of lancet panelled cupboard doors, the lower part with two similar mahogany and oak lancet shaped doors raised upon bracket feet, flanked by inlaid canted angles 83" x 39½" x 20½" See illustration £400 - 600



Lot 665

666 - A VICTORIAN CIRCULAR OAK DINING TABLE the 49" diameter plank top with a moulded border, plain frieze raised upon four sphere and hexagonal baluster legs raised upon ceramic castors, 29" high, See illustration £100 - 150



Lot 666

667 - A VICTORIAN OAK RENAISSANCE REVIVAL SETTLE the rectangular back with four fielded panels each carved with saints above winged masks, down swept arms, webbed seat raised upon front leaf carved cabriole legs, plain rear legs 39" x 73" £300 - 400

668 - A GEORGE III STYLE OAK AND MAHOGANY INLAID HIGH BACK DRESSER early 20th century with a cavetto cornice above a shaped frieze, three plate rails with spice cupboards inlaid with birds, one drawer lacking, the lower part with a rectangular moulded top enclosing three frieze drawers, brass pear drop handles, shaped apron, raised upon cabriole legs, claw and ball feet 78" x 54" x 18" £200 - 300

669 - A JACOBEOAN STYLE OAK REFECTORY TABLE the rectangular 1" three plank top above a channelled frieze raised upon six fluted cup and cover supports joined by stretchers, 30"x96"x32" £400 - 600

670 - AN EDWARDIAN INLAID OAK SUTHERLAND TABLE with two hinged leaves raised upon plain legs 26" x 22" £40 - 60

671 - A 19TH CENTURY OAK AND MAHOGANY FREESTANDING CORNER WALL CABINET with an oval hanging cornice above a Pollard oak frieze and a pair of glazed cabinet doors with central lozenges enclosing three shelves the lower part with a moulded base above a pair of panelled cupboard doors raised upon shaped bracket feet, 80"x37" £200 - 300



Lot 675

672 - AN OAK HIGH BACK DRESSER, 20TH CENTURY, with a shaped frieze above three plate rails, the lower part with rectangular planked top, moulded border above seven drawers with a shaped apron raised upon shaped front legs joined by a pot board on plain feet, 72"x53"x20" £150 - 200



Lot 676

673 - AN OAK REFECTORY TABLE the rectangular planked top with cleated ends above a plain frieze raised upon square headed baluster turn legs joined by an H stretcher, 30"x66"x33" £100 - 150

674 - A SET OF SIX VICTORIAN OAK DINING CHAIRS each with concave backs carved with roundels, stuff over seats raised upon turned front legs carved with flower heads, plain outset rear legs joined by H stretchers. £80 - 120

675 - A PAIR OF 17TH CENTURY OAK SIDE CHAIRS each with shaped cresting rails above panel backs, board seats raised upon turned square section legs joined by baluster stretchers with a shaped apron. *See illustration* £150 - 200

676 - A VICTORIAN PINE HIGHBACK DRESSER with a cavetto and dentil cornice above three plate rails the lower part with a rectangular planked top above two frieze drawers each with brass handles raised upon square section supports joined by a pot board 83"x60"x20½" *See illustration* £150 - 200



Lot 677



Lot 679

677 - AN EARLY 19TH CENTURY OAK AND MAHOGANY CROSSBANDED MULE CHEST

the rectangular hinged top above six false drawers and three drawers flanked by fluted quarter columns raised upon a plinth base and ogee bracket feet, 35"x67½"x22"

See illustration

£300 - 400

678 - A VICTORIAN OAK SIDEBOARD the rectangular golden oak top with two frieze drawers above a niche and a frieze drawer, flanked on either side by leaf carved cupboard doors one enclosing two sliding trays raised upon turned legs and bracket feet, 36" high x 84"x24"

£100 - 150

679 - A 19TH CENTURY OAK DRESSER with a later rack the moulded cornice above two plate rails and two geometric moulded cupboard doors the lower part with a rectangular moulded top above a slide and an arrangement of seven drawers each with shape brass plates and swan neck handles raised upon a plinth base and ogee feet, 77"x55"x17"

See illustration £300 - 400



Lot 680

680 - A VICTORIAN OAK ART NOUVEAU MIRROR BACKED SIDEBOARD the arched top carved with a stylized tulip and tendrils above a shaped bevelled mirror flanked by copper panels decorated with tulips above three bevelled mirrors, the lower part with a rectangular moulded top above two frieze drawers and two panelled cupboard doors, the centre carved with art nouveau flowers and fruit, shaped apron raised upon bracket feet 86" x 60" x 22".

See illustration

£150 - 200



Lot 681

681 - A SET OF SIX LATE 19TH EARLY 20TH CENTURY OAK DINING CHAIRS each with arch cresting rails carved with leaves above a pair of pierced splats, padded stuff over seats raised upon front vase shape legs and peg feet, plain outset rear legs (6)

See illustration £100 - 150

682 - AN OAK EXTENDING DINING TABLE EARLY 20TH CENTURY with a rounded rectangular top enclosing a leaf above a plain frieze raised upon cabriole legs, pad feet and castors 28½" high x 59½" extended x 39"

£100 - 150

683 - A VICTORIAN PINE HIGH BACK DRESSER with an ovolo cornice above a plain frieze and two plate rails the lower part with a rectangular plank top above a frieze drawer and a panelled cupboard door flanked on either side by three long graduated drawers turned knob handles raised upon an inverted breakfront plinth and vase shape legs, 85"x74"x25"

See illustration

£300 - 500



Lot 683



Lot 684

684 - A 17TH CENTURY OAK BLANKET CHEST the rectangular top enclosing three panels above a carved frieze and three panels each decorated with flower heads raised upon stile feet 28" x 50" x 21".
See illustration

£250 - 350

685 - A GEORGE III OAK AND POLLARD OAK CHEST the shaped top with canted angles cross banded with pollard oak above two short and two long graduated cock beaded drawers, later brass swan neck handles, fluted quarter columns raised upon a plinth base and bracket feet 31" x 42½" x 21¼" See illustration

£200 - 300



Lot 685

686 - AN EARLY 20TH CENTURY OAK PEDESTAL ROLL TOP DESK by Angus, London enclosing pigeon holes and two drawers each pedestal enclosing four short drawers above a frieze drawer 40"x48"x27"

£100 - 150

687 - A PAIR OF VICTORIAN OAK HALL CHAIRS each with shaped crestings above a panelled back centred with a lozenge in a roundel, board seats raised upon turned square legs joined by baluster stretchers (2) See illustration

£100 - 150



Lot 687

688 - A 20TH CENTURY OAK DRESSER the rectangular planked top above two panelled drawers and two cupboard doors each carved with scrolls and leaves enclosing shelves, channelled uprights raised upon plain stile feet, 38"x54"x21"

£100 - 150

689 - AN EARLY 19TH CENTURY OAK BREAK FRONT DRESSER the rectangular plank top above three drawers, each with moulded fronts, flanked on either side by a short drawer and a panelled cupboard, raised upon a break front plinth base, one drawer fitted with cutlery compartments, replaced back, 24½" x 71" x 19½"
See illustration

£800 - 1200



Lot 689

690 - A VICTORIAN CARVED OAK CENTRE TABLE the shaped rectangular top with outset angles, the border carved with leaves raised upon shaped end supports, down swept leaf carved legs joined by a stretcher 30" x 38" x 26".

See illustration

£100 - 150

691 - A PINE OPEN BOOKCASE, modern the rectangular moulded top above three shelves enclosed by fluted uprights 40" x 46"

£40 - 60

692 - A HARDWOOD SHOE OR BOOT CUPBOARD the rectangular moulded top above an arrangement of frieze drawers opening to reveal two large shoe storage compartments raised upon a plinth base 34" x 42"

£40 - 60

693 - A 17TH CENTURY OAK BLANKET CHEST the rectangular plank top above a frieze carved with initials IP 1675 and leaves above three panels and two drawers, incised front supports, later block with iron carrying handles 28"x40½"x20½"
See illustration

£300 - 400



Lot 690



Lot 693

694 - A GEORGE IV OAK TRIPOD TABLE with a 20" diameter two plank top raised upon a turn baluster shaft, downswept legs and pad feet, 25½" See illustration £80 - 120



Lot 694

695 - A VICTORIAN POLLARD OAK AND EBONY TRIPOD TABLE the square crossbanded top segmentally inlaid with Pollard oak ebony line inlays raised upon a baluster shaft and downswept legs 28½"x24"x24" £80 - 150

696 - A SET OF SIX EARLY 20TH CENTURY OAK DINING CHAIRS each with concave padded leather backs above leafy shaped splats, padded drop in seats raised upon front tapering vase shape legs, plain outswept rear legs joined by a central shape stretcher, See illustration £100 - 150

697 - A LATE 19TH EARLY 20TH CENTURY GOLDEN OAK EXTENDING DINING TABLE with a moulded top above a plain frieze enclosing two leaves raised upon tapering legs and vase shape feet, 29"x48" closed overall 90"x48". See illustration £300 - 400



Lot 696



Lot 697

698 - A VICTORIAN OAK FOUR DOOR CHIFFONIER with an inverted breakfront top above a frieze drawer and a pair of panelled cupboard doors flanked on either side by a cupboard door enclosing a cellarette lacking lining with a sliding tray raised upon an inverted brake front plinth base, 36"x71"x23". £150 - 200



Lot 699

699 - AN EARLY 20TH CENTURY OAK ROLL TOP DESK, "The Lebus", tambour slated fall front, damaged, with a fitted interior, each pedestal with an arrangement of four short drawers raised upon a plinth base 46" x 48" See illustration £150 - 200

700 - A SET OF TEN (EIGHT PLUS TWO) OAK DINING CHAIRS in the Queen Anne style, 20th century, each with concave cresting rails, vase shaped splat's, padded drop in seats raised upon cabriole legs. See illustration £400 - 600

701 - A VICTORIAN PINE WARDROBE with a cavetto cornice above two panelled cupboard doors raised upon a plinth base and turned legs 76" high x 54" £100 - 150



Lot 700



Lot 704

702 - A VICTORIAN PINE TRAY TOP DRESSING TABLE the shaped back above a moulded top, two short and two long drawers raised upon reduced bracket feet 34" x 36" £80 - 120

703 - A VICTORIAN OAK INVERTED BREAKFRONT SIDEBOARD with a leaf carved frieze above a drawer carved with grapes and vine above two panelled cupboard doors with lions mask ring handles flanked on either side by a panelled cupboard door, lions mask ring handle enclosing drawers, raised upon an inverted breakfront plinth base, 39"x54" £100 - 150

704 - AN ANTIQUE OAK HALL CUPBOARD the rectangular top above two 17th century carved panel cupboard doors carved with animals, Tudor roses and vine style Elizabethan figural mask handles raised upon a plinth base and bracket feet, 56 1/2"x50". See illustration £150 - 200

705 - A VICTORIAN OAK SIDE TABLE the rectangular plank top with a moulded canted border above a lobed frieze with lions mask angles raised upon leaf carved bulbous tapering legs, platform feet joined by a cross stretcher, 30"x42"x28" See illustration £200 - 300

706 - A REPRODUCTION OAK BLANKET CHEST the rectangular planked top with two fielded panels raised upon a plinth base and plain style legs 27"x47" £40 - 60



Lot 705

707 - A CHINESE ALTER TABLE the rectangular top above a pierced dragon carved frieze, leaf and bird decorated rectangular section legs 30"x42" £100 - 150

708 - A REPRODUCTION CAROLEAN STYLE COMPOSITION WALL MIRROR with a figural cresting leafy frieze enclosing a plain rectangular mirror 56"x35" See illustration £50 - 80



Lot 708

709 - A SET OF SIX OAK RUSH SEAT LADDER BACK DINING CHAIRS each with a shaped cresting carved with a flower head and leaves raised upon front curvilinear legs (6) £100 - 150

710 - AN EARLY 19TH CENTURY OAK HANGING CORNER WALL CUPBOARD with a glazed cabinet door enclosing two shelves 27" wide £50 - 80

711 - A GEORGE III MAHOGANY TRIPOD TABLE with a 35" diameter top raised upon a barrel shape shaft and downswept legs. £80 - 120



Lot 712

712 - A LATE 18TH CENTURY OAK MAHOGANY CROSSBANDED DRESSER the rectangular plank top with a mahogany border above a plain frieze with four short drawers each crossbanded with later brass plates above a shaped apron raised upon front baluster legs, rear legs of plain section, 30 1/2"x87"x20". See illustration £800 - 1200



Lot 715

713 - A GEORGE III OAK AND MAHOGANY INLAID HANGING CORNER WALL CABINET requires restoration, enclosing four shaped shelves 42½"x23" £80 - 120

714 - AN EARLY 19TH CENTURY OAK DROP LEAF SUPPER TABLE raised upon tapering cylindrical legs and pad feet, 27"x34" £40 - 60

715 - A GEORGE III OAK MULE CHEST the rectangular hinged top above four fielded panels and three frieze drawers raised upon bracket feet, 35"x58", See illustration £200 - 300

716 - A MACCLESFIELD TYPE BEECHWOOD LADDER BACK DINING CHAIR AND A VICTORIAN WALNUT AND CANE WORK ROCKING CHAIR (2) £50 - 80

717 - A PAIR OF ARTS AND CRAFTS OAK SIDEBOARDS each with rectangular moulded tops above three frieze drawers each with curvilinear foliate mounts, ring handles flanked on either side by panelled cupboard doors, foliate hinges and dolphin mounted ring handled door plates above a shaped apron raised upon outswept legs, 39"x62"x62" See illustration £500 - 800



Lot 717

718 - AN OAK BOWFRONT CORNER WALL CABINET STAMPED BERKEY & GAY FURNITURE with leafy pineapple finials above a glazed cabinet door flanked by spirally turned fluted columns raised upon front cabriole legs 67½"x33" See illustration £300 - 400

719 - A GEORGE III OAK CHEST the rectangular plank top above two short and three long cockbeaded drawers each with brass swan neck handles and bracket feet, 34"x38"x21" £300 - 400

720 - AN OAK SIDEBOARD 20TH CENTURY the rectangular moulded top above two drawers and two panel cupboard doors raised upon cup and cover supports, bun feet, 42" highx54" £40 - 60

721 - A GOLDEN OAK CUPBOARD the rectangular top above two frieze drawers and two cupboard doors raised upon barley twist turned legs, 37" high x 16"x23" See illustration £80 - 120

722 - A LATE 18TH EARLY 19TH CENTURY OAK MULE CHEST the rectangular crossbanded top above three raised panels each ebony spandrels above two frieze drawers raised upon plain stile feet, 34"x48"x20½" £200 - 300



Lot 718

723 - A VICTORIAN OAK CONSOLE TABLE with a shaped back centred with a shield the rectangular moulded top with two large outswept scrolling front legs, cylindrical rear legs 39"x47" £100 - 150

724 - A GEORGE III OAK AND CROSSBANDED SETTLE the rectangular back with four fielded crossbanded panels, downswept arms, plain frieze raised upon front cabriole legs, plain outset rear legs, 72" wide £200 - 300

ENGLISH FURNITURE

727 - A MAHOGANY BERGERE THREE PIECE SUITE comprising a settee and two conforming easy chairs raised upon cabriole legs. £400 - 600

728 - A CHOICE SET OF FIVE EARLY VICTORIAN ROSEWOOD SPOON BACK DINING CHAIRS comprising two elbow chairs each with waisted backs with shell and scroll splats, padded scroll arms, drop in serpentine seats, shaped aprons raised upon front curvilinear legs, plain outset rear legs and three conforming side chairs (5) £500 - £800



Lot 729

729 - A CHOICE LOUIS XV STYLE MAHOGANY AND BRASS EMBELLISHED BREAKFRONT DISPLAY CABINET with a cavetto cornice above a frieze with panels applied with roundels and leaves above a glazed cabinet door enclosing four shelves flanked by cupboard doors with metal grills each above raised panels applied with leaves and flower heads raised upon gilt metal mounted tapering supports, 71" high x 65"x19" See illustration £800 - £1,200

730 - A VICTORIAN MAHOGANY TRIPOD with a rectangular top raised upon a baluster turned shaft and triform downswept legs, 28½"x39" £80 - 150

731 - A WILLIAM IV MAHOGANY SEWING TABLE the rectangular top above a frieze drawer and a sliding wool box raised upon a trumpet shape shaft raised upon a quadripartite plinth and tapering legs, 28"x22"x16" £150 - 200

732 - A VICTORIAN BUR WALNUT AND MARQUETRY LIBRARY TABLE with a rectangular moulded top, the border inlaid with scrolling leaves and flowers in coloured woods raised upon two cylindrical columns, lobed baluster shafts, downswept scrolling legs joined by a turned stretcher 30"x48"x26" £400 - 600

733 - GEORGE I STYLE LOW BOY the rectangular moulded top above a frieze drawer and three short drawers above a shaped apron raised upon cabriole legs 29½" x 27" x 15" See illustration £100 - 150



Lot 733

734 - A GEORGE III OAK AND MAHOGANY CROSSBANDED BUREAU enclosing an arrangement of seven pigeon holes and nine short drawers with five frieze drawers the lower part with two short and three long graduated cockbeaded crossbanded drawers, brass handles flanked by fluted uprights raised upon a plinth base and bracket feet, 45"x44"x21" £200 - 300



Lot 735

735 - A GEORGE I STYLE ELBOW CHAIR with out swept arms, upholstered in a green floral cloth, raised upon front cabriole legs, plain outset rear legs, See illustration £300 - 400

736 - A VICTORIAN BURR WALNUT VENEERED SEWING TABLE the shaped rectangular top with outset round corners with a frieze drawer with a sliding wool box raised upon turned vase shape columns and platform feet, 31"x22" £200 - 300

737 - A GEORGE III MAHOGANY HANGING GLAZED CORNER WALL CABINET with a cavetto cornice above a glazed door enclosing two shelves, canted angles with a moulded base 41½"x32" £150 - 200

738 - A WALNUT BUREAU, 20TH CENTURY with a pie crust border enclosing a fitted interior above three long graduated drawers gilt metal handles raised upon cabriole legs, claw and ball feet, 39"x29½" £50 - 80

739 - A GEORGE IV MAHOGANY TOILET MIRROR with a rectangular mirrored plate enclosed by fluted uprights raised upon a plinth base enclosing three drawers on bun feet, 22"x22" £80 - 120

740 - A GEORGE III MAHOGANY TEA TABLE the rectangular hinged top with rounded corners above a plain frieze raised upon a baluster shaft leaf carved quadripartite fluted downswept legs, brass paw feet and casters, 29½"x36"x17½" £150 - 200

741 - A GEORGE III MAHOGANY HANGING CORNER WALL CUPBOARD with a cavetto cornice above a frieze inlaid with chequered festoons inlaid with pendant bells, H brass hinges and brass escutcheon's enclosing three shelves and three spice drawers raised upon a moulded plinth, 45½"x28"x19" deep. £300 - 400

742 - A GEORGE III STYLE MAHOGANY SERPENTINE CHEST OF DRAWERS 20th century with a reeded top above four graduated cockbeaded drawers, foliate handles raised upon a plinth base and bracket feet, 36"x18"x36" with a conforming mahogany toilet mirror with a bevelled plate, lyre shape uprights raised upon a plinth with two drawers 31" high x21" £80 - 120

743 - A GEORGE III MAHOGANY D END SIDE TABLE with a shaped frieze raised upon moulded legs of square section 28" x 48½" £40 - 60

744 - A WILLIAM IV MAHOGANY BREAKFRONT TEA TABLE the rectangular hinged top above a wavy moulded frieze raised upon a baluster shaft, leaf carved quadripartite downswept legs, scroll toes, 30"x40½"x20" £80 - 120

745 - A GEORGE III MAHOGANY SERPENTINE GAMES TABLE the curvilinear top above a plain frieze, shaped sides raised upon fluted downswept tapering legs and peg feet 29" x 34" x 17½" £300 - 400

746 - A VICTORIAN MAHOGANY DINING TABLE the rectangular moulded top above a plain frieze raised upon square headed fluted vase shape legs, vase feet and castors, 28" high x 40"x41" See illustration £100 - 150

747 - A CHOICE PAIR OF GEORGE IV MAHOGANY SIDE CHAIRS each with waisted backs, leaf carving, red Morocco leather seats raised upon front fluted downswept tapering legs and peg feet, plain outset rear legs £100 - 150

748 - A WALNUT HEXAGONAL HINGED SUPPER TABLE with a moulded border raised under slender turned legs and shaped feet, 27" high x29" wide £40 - 60

749 - A GEORGE III INLAID MAHOGANY HANGING CORNER WALL CUPBOARD with a dentil cornice above an inlaid frieze the panel cupboard door with well figured wood enclosing three shaped shelves, canted angles inlaid with flowers and stringing raised upon a plinth base, 45"x31"x18" £150 - 200



Lot 746

750 - AN EARLY 19TH CENTURY MAHOGANY PEMBROKE TABLE the rectangular top with two hinged leaves inlaid with line inlays above a frieze drawer raised upon tapering legs, brass shoes and castors, 28"x38" £100 - 150

751 - AN EDWARDIAN MAHOGANY BOOKCASE ON STAND with a cavetto cornice above a pair of astragal glazed cabinet doors enclosing two shelves the lower part with a rectangular moulded top with a shaped apron raised upon tapering legs and spade feet, 82"x37½" £100 - 150

752 - A GEORGE III STYLE MAHOGANY DINING CHAIR with an arched cresting rail the interlaced splat carved with leaves, padded drop in seat raised upon cabriole legs, claw and ball feet, and a Chippendale style chair the pierced splat carved with flower heads, leaf carved arms, leaf carved cabriole legs, claw and ball feet, (2) £50 - 80

753 - A GEORGE IV MAHOGANY HANGING BOOKCASE with a cavetto cornice above two glazed cabinet doors enclosing four shelves, 44½"x42" £100 - 150

754 - A PAIR OF VICTORIAN MAHOGANY DINING CHAIRS each with concave leaf carved cresting rails, fluted uprights, padded stuff over seats raised upon fluted tapering legs and peg feet, plain outset rear legs (2) £100 - 150

755 - A VICTORIAN THREE TIER ROSEWOOD WHATNOT with three serpentine shelves joined by barley twist uprights raised upon vase shaped legs and castors 35" x 14½" £100 - 150

756 - AN EDWARDIAN INLAID MAHOGANY PLANT STAND with three circular shelves above a frieze inlaid with stringing, outswept legs and splay feet 42" x 13" £80 - 120

757 - A PAIR OF EARLY 19TH CENTURY MAHOGANY DINING CHAIRS each with concave cresting rails, padded stuff over tapestry seats raised upon front fluted legs and peg feet £80 - 120

758 - A STAN SMITH INLAID MAHOGANY REPRODUCTION OPEN BOOKCASE with a rectangular crossbanded top above two shelves raised upon a plinth base 36" x 35" £40 - 60

759 - A GEORGE II STYLE ELBOW CHAIR 20th century reproduction with a padded back and arms, scrolling terminals, padded seat raised upon leaf carved claw and ball feet £80 - 150

760 - A GEORGE III MAHOGANY HANGING CORNER WALL CABINET, with a dentil cornice above a plain frieze, a pair of glazed cabinet doors enclosing three shelves, 47"x30½"x11½" £100 - 150

761 - A CHOICE WILLIAM IV ROSEWOOD BREAKFAST TABLE with a 47" diameter well figured top raised upon a lapett leaf turned column, circular plinth raised upon a triform base with compressed bun feet, 28" high £400 - 600



Lot 763

762 - A CHOICE SET OF SIX GEORGE IV ROSEWOOD DINING CHAIRS each with leaf carved scrolling panelled cresting rails, fluted waisted backs joined by leaf carved horizontal stretchers padded drop in seats, leafy angles and panelled fronts raised upon tapering fluted legs and peg feet, plain outset rear legs. £300 - 400



Lot 764

763 - A VICTORIAN PAINTED SATIN BIRCH GENTLEMAN'S COMPACTUM WARDROBE with a cavetto cornice above a painted frieze, two panelled cupboard doors and a mirrored door enclosing four sliding trays, two short and two long graduated drawers raised upon a plinth base, 81" high x 76"x23" See illustration £150 - 200



Lot 765

764 - A EARLY VICTORIAN MAHOGANY GENTLEMAN'S WARDROBE with a cavetto cornice above a plain frieze and two panelled cupboard doors enclosing five sliding trays, the lower part with two cockbeaded drawers raised upon a plinth base, See illustration £180 - 250

765 - A GEORGE III STYLE LATE MAHOGANY BOW FRONT SIDE BOARD with later alterations the broad satinwood border centred with a conch shell brass baluster columns supporting a rail the lower part with two cupboard doors flanking a freeze drawer raised upon tapering legs and spade feet, overall inlaid with boxwood and ebony stringing 36½"x63"x20" See illustration £150 - 200



Lot 770

766 - A VICTORIAN MAHOGANY SUTHERLAND TABLE the rectangular top with two hinged leaves supported by baluster turned legs, downswept supports joined by baluster stretcher 28"x33"x41" £80 - 120

767 - A VICTORIAN MAHOGANY DISPLAY CABINET with a leaf carved cresting above an arrangement of shaped mirrors with a curvilinear shelf flanked on either side by glazed cabinet doors and fret carved drawers raised upon leaf carved cabriole legs and pad feet, 78"high x 47" £150 - 200



Lot 771

768 - A GEORGE III MAHOGANY CHEST the rectangular moulded top above four graduated drawers on a plinth base and ogee bracket feet with alterations, 33"x47"x22½" £150 - 200



Lot 772



769 - AN EDWARDIAN INLAID MAHOGANY BUREAU satinwood crossbanded border centred with a conch shell enclosing pigeon holes and two frieze drawers above four long graduated drawers, brass swan neck handles raised upon bracket feet, 38"x30"x17" £50 - 80

770 - A VICTORIAN MAHOGANY AND APLIQUE FIRE SCREEN the rectangular frame enclosing patchwork panels supported by fluted baluster columns raised upon compressed bun feet, 41½"x37" See illustration £100 - 150

771 - A VICTORIAN MAHOGANY AND WOOLWORK FIRE SCREEN with a C scroll and flower cresting flanked by urn finial's one damaged, the rectangular glazed panel worked with flowers flanked by spirally turned uprights raised upon leaf carved cabriole legs, 49"x32" See illustration £150 - 200

772 - A VICTORIAN INLAID ROSEWOOD DRAWING ROOM SUITE COMPRISING A SETTEE with lyre shape back, satinwood roundel's centred with a ribbon tied panel, overall padded, lyre shape inlaid arms raised upon tapering legs, brass shoes and castors, and two easy chairs and two side chairs. 60" wide x 29" See illustration £400 - 600

773 - A CONTINENTAL BEECHWOOD FRAME SETTEE with a concave leaf and flower carved padded back, outswept padded arms, serpentine seat similarly carved with a basket of blooms, cabriole legs covered in a Brussels floral pink tapestry. See illustration £150 - 200



Lot 773

774 - AN ANTIQUE BUR WALNUT AND CROSSBANDED BUREAU the hinged front enclosing an arrangement of five pigeon holes, four stepped drawers flanking a frieze drawer and a well the lower part with three long graduated cockbeaded drawers, replaced handles, shaped brass escutcheons raised upon a plinth base and ogee bracket feet, 41"x34½"x19" See illustration £200 - 300

775 - A VICTORIAN MAHOGANY EXTENDING DINING TABLE enclosing two leaves with a rectangular top with a moulded border and rounded angles raised upon square headed sphere and fluted baluster vase shaped legs, peg feet, brass shoes and casters, 29" x 50" x 102" See illustration £800 - 1200



Lot 775

776 - A SET OF EIGHT (6 + 2) CHIPPENDALE STYLE MAHOGANY DINING CHAIRS 20th century each with shaped cresting rails interlaced vase shaped splat, the elbow chairs with out swept arms, all raised upon cabriole legs and pad feet, See illustration £400 - 600



Lot 776

777 - A GEORGE IV MAHOGANY BREAKFAST TABLE the rectangular moulded top above a plain frieze raised upon a vase shape shaft, concave plinth terminating in lion's paw feet, 30"x57"x47½" See illustration £180 - 250

778 - A VICTORIAN BUR WALNUT AND INLAID SHEET MUSIC CANTERBURY with a divided top, spindle supports above a frieze drawer raised upon turned vase shaped legs and casters, some restoration 19" x 22" £80 - 150



Lot 777

780 - A GEORGE III INLAID MAHOGANY CHEST the rectangular moulded top with a satinwood cross banded border inlaid with ebony and boxwood checkering above two short and three long graduated cock beaded drawers each with brass swan neck handles, flanked by fluted quarter columns raised upon shaped bracket feet 36" x 37" x 20" See illustration £200 - 300



Lot 780

781 - AN EARLY 19TH CENTURY MAHOGANY BOW FRONT CHEST with two short and three long graduated cock beaded drawers, pierced brass plated and swan neck handles raised upon a plinth base and shaped bracket feet 40" x 43" x 22" See illustration £150 - 200

782 - A GEORGE IV MAHOGANY BUREAU BOOKCASE with a dentil cornice above a blind fret carved frieze and two astragal glazed doors enclosing three shelves the lower part with a hinged fall front enclosing a fitted interior with six pigeon holes and ten short drawers above four long graduated cock beaded drawers, brass swan neck handles raised upon a plinth base and ogee bracket feet 87" x 43" x 21" See illustration £300 - 400



Lot 781



Lot 782

783 - A GEORGE IV AND MAHOGANY TOILET STAND with a shaped frieze above a cock beaded drawer raised upon tapering legs 32½" x 14½" x 14", See illustration £40 - 60



Lot 783

784 - AN EARLY 19TH CENTURY MAHOGANY TOILET STAND with a rectangular hinged top enclosing three apertures above a frieze drawer raised upon four plain legs joined by a shelf 33" high x 14½" x 14¾" £80 - 120

785 - A VICTORIAN MAHOGANY CHEVAL MIRROR with a full length mirror, moulded frame supported by lyre shaped scrolling uprights raised on a curvilinear plinth and scrolling feet 59" high x 31" See illustration £150 - 200

786 - A GEORGE IV MAHOGANY GAMES TABLE the rectangular hinged top inset with a blue baize playing surface, panelled front raised upon tuned tapering legs of cylindrical section and casters 30½" x 36" x 19" closed £150 - 200



Lot 785

787 - A GEORGE III MAHOGANY SIDE TABLE the rectangular top above a plain frieze raised upon moulded legs of shaped square section 28½" x 33½" x 17" £100 - 150

788 - AN EDWARDIAN MAHOGANY CHEVAL MIRROR the rectangular plate enclosed by plain supports raised upon down swept legs 61" high £80 - 120

789 - A VICTORIAN STYLE BLACK PAINTED SINGLE BEDSTEAD with rail ends 36" wide £80 - 150

790 - A VICTORIAN EBONISED DRAWING ROOM CHAIR with a padded button back, downswept gilt decorated padded arms, spindle gallery, stuff over seats raised upon angular legs and castors, See illustration £50 - 80

791 - A PAIR OF WILLIAM IV MAHOGANY CRESTED HALL CHAIRS each with leaf carved shaped oval backs each centred with a crest, board seat raised upon vase shaped front legs and peg feet, plain outset rear legs (2) See illustration £300 - 400



Lot 785



Lot 791



792 - A VICTORIAN MAHOGANY INVERTED BREAK FRONT CHIFFONIER SIDEBOARD with a leaf carved shaped back, the moulded top above a concave frieze drawer and a pair of cupboard doors each applied with ovals with well figured panels, flanked on either side by a drawers above a cupboard door applied with leaf and lyre shaped mouldings, one enclosing a cellerette with divided compartments, recessed brass handle raised upon an inverted plinth base 75" x 92" x 31" See illustration £800 - 1200



Lot 792

793 - A VICTORIAN MAHOGANY SIDE TABLE the rectangular panelled top raised upon two spirally fluted and leaf carved columns, plinth bases joined by a shaped stretcher 32" x 47" x 20" £80 - 120



Lot 795

794 - A GEORGE III CHIPPENDALE STYLE MAHOGANY SIDE CHAIR with a shaped cresting above a vase shape splat, stuff over seat raised upon moulded square front legs, block feet joined by a H stretcher £40 - 60

795 - A CHOICE BUR WALNUT AND EBONISED AND GILT BRONZE CORNER CUPBOARD with a cavetto cornice above a panelled frieze centred with roundels enclosing gilt bronze roundels of mythological figures above a panelled cupboard door flanked by columns with similar roundels enclosing three shelves, 43½"x17" See illustration £200 - 300



Lot 796

796 - A GEORGE IV MAHOGANY MULE CHEST the rectangular hinged top with a moulded border enclosing a lidded compartment above three frieze drawers and six drawers each with brass handles some detached flanked by fluted quarter columns, panel sides raised upon a plinth base and reduced ogee bracket feet, 34"x70"x21½" See illustration £400 - 600

797 - A BUR WALNUT AND HERRINGBONE INLAID CHEST OF THREE DRAWERS with a later rectangular top and frame 33"x42" £100 - 150

798 - A SET OF FOUR 19TH CENTURY MAHOGANY SPOON BACK DINING CHAIRS each centred with an oval splat carved with a Liver bird within a ribbon tied border inscribed TUTUM SistamTE, stuff over seats raised upon front fluted vase shape legs joined by cross stretchers, See illustration £200 - 300



Lot 799

Lot 798



Lot 800

799 - A VICTORIAN MAHOGANY EXTENDING DINING TABLE with a rectangular moulded top enclosing three leaves, plain frieze raised upon square head fluted baluster legs, vase shaped feet and casters, 30" high x 40" closed, 102½" See illustration £2000 - 3000

800 - A VICTORIAN WALNUT INVERTED BREAK FRONT PEDESTAL DESK the rectangular leaf and lobed top inset with a green and gilt tooled leather writing surface above a frieze drawer, each pedestal with four short drawers, overall carved with leaves and flowers with outset fluted leaf carved columns raised upon an inverted break front plinth base and fluted bun feet 31" x 67" x 31" See illustration £400 - 600



Lot 801

801 - A CHOICE INLAID MAHOGANY SATIN WOOD AND STAINED WOOD AND MOTHER OF PEARL BOWFRONT DISPLAY CABINET with a moulded cornice above a pair of glazed cabinet doors each with shaped glass panels enclosing shelves flanked by cupboard doors each inlaid with Art Nouveau flowers and roundels above two panels inlaid with Mother of Pearl hearts, panelled sides raised upon moulded front legs, plain rear legs joined by side stretchers, panel door detail handle, See illustration £400 - 600

802 - A GEORGE IV CONVEX WALL MIRROR with an eagle and leafy pediment, Convex mirror with an ebonised slip above a shell and candle branches with alterations and additions 45" high, See illustration £200 - 300



Lot 802

803 - AN ART NOVEAU WALNUT AND COPPER MIRROR with an heart shape mirror flanked by panels carved with masks above a copper plaque inscribed "look but linger not", 15½"x39" See illustration £80 - 120



Lot 803

804 - GEORGE I STYLE BUR WALNUT AND HERRINGBONE CROSSBANDED CHEST ON STAND with a cavetto cornice above two short and two long graduated drawers, the stand with a rectangular moulded top above an arrangement of three drawers above a shaped apron raised upon cabriole legs and pad feet 57" high x 30" See illustration £200 - 300



Lot 804

805 - A VICTORIAN ORKNEY ELBOW CHAIR with a sea grass back, out swept arms, board seat raised upon plain legs joined by side stretchers 39" high See illustration £200 - 300



Lot 805

806 - A GEORGE III STYLE MAHOGANY CONCAVE DISPLAY CABINET 20th century reproduction with a dentil cornice above a plain frieze and three glazed cabinet doors, the lower part with three panelled cupboard doors raised upon a plinth base 72" x 70"

See illustration £200 - 300

807 - A 17TH CENTURY STYLE OAK COURT CUPBOARD with a frieze initialed IM AM carved with sea serpents above two panelled cupboard doors carved with flower heads, the lower part with a rose carved frieze above two panelled cupboard doors with linen fold plain style feet 68" x 49" See illustration £150 - 200

808 - A BURMESE HARDWOOD CAMPHOR LINED BLANKET BOX the rectangular hinged cover carved with dignitaries in landscape, a similar frieze raised upon bracket feet 19" x 35" £40 - 60

809 - A VICTORIAN WALNUT DRESSING STOOL the curvilinear button tapestry back above a leaf carved scrolling frieze raised upon cabriole legs 32" high x 32" £40 - 60



Lot 806



Lot 807

810 - A VICTORIAN WALNUT DRESSING TABLE with a leaf carved swan neck cresting above a shaped bevelled mirror, frieze drawers, the lower part with two short drawers above a carved apron raised upon cabriole legs 64" x 42"

See illustration £100 - 150

811 - A HARDWOOD AND IVORY INLAID BEDSIDE CUPBOARD late 19th early 20th century the rectangular moulded top above two panels carved with oriental's raised upon plain tapering legs 30" x 17" £40 - 60

812 - A VICTORIAN WALNUT BEDSIDE CUPBOARD with a swan neck cresting above a shaped panel cupboard door raised upon cabriole legs 33" x 16" £40 - 60

813 - A PAIR OF CONTINENTAL SILICA ITALIAN BOMBAY BEDSIDE CHESTS OF DRAWERS each with curvilinear tops above two graduated drawers with a shaped apron raised upon curvilinear legs 24" x 23" (2)

See illustration £100 - 150



Lot 810

814 - A SILICA DISPLAY CABINET 20TH CENTURY with a leafy cresting above a bowfront glazed cabinet door enclosing three shelves the lower part of bowfront outline with a frieze drawer overall decorated with leaves and flowers above a shaped apron raised upon four cabriole legs, 87"

See illustration £150 - 200



Lot 813

815 - A SILICA SIDE TABLE with a curvilinear top above a frieze drawer, outswapt leaf moulded supports above a shelf raised upon curvilinear legs, overall painted with blooms and leaves, 38½"x20"x12" £80 - 150

816 - A SILICA DRESSING STOOL with scrolling leafy handles, padded floral tapestry seat above a leaf apron raised upon cabriole legs, 35" wide, £40 - 60



Lot 814

817 - A SILICA, SHAPED OCCASIONAL TABLE with a plate glass top the centre decorated with roses, blooms and leaves raised upon leaf moulded cabriole legs 22"x54" £40 - 60

818 - A VENETIAN STYLE WALL MIRROR with a leaf and C scoll cresting the shaped bevelled mirror flanked by ruby coloured panels, 55½" highx28" See illustration £100 - 150



Lot 818

819 - A SILICA ROCOCO STYLE SHAPED OVAL MANTLE with a leafy frame 45" high.

£80 - 120

820 - A SILICA MIRROR with a shell, rose and foliate cresting, scrolling leafy angles with a shell and flower apron 44"x43"

See illustration on page 66

£50 - 80

821 - A SILICA DRESSING STOOL with a shaped downswept back overall padded, raised upon curvilinear legs 38"

£50 - 80

822 - A HARDWOOD AND MARBLE TOP CONSOLE TABLE SINGAPORE the curvilinear white grain marble top above a leaf carved frieze shaped apron carved with ostrich and a deer amidst a woody landscape raised upon four leaf and flower carved curvilinear legs 32"x48"

See illustration on page 66

£80 - 150

823 - A BURMESE HARDWOOD ELEPHANT MASK TABLE the octagonal leaf carved top carved with standing elephants, flowers and leaves raised upon four elephant mask and trunk supports 24½" high x 36"

See illustration on page 66

£50 - 80

824 - A SILICA CONTINENTAL OVER MANTLE MIRROR with a leaf and shell rose moulded pediment the border overall decorated with flowers and leaves, 56"x51"

See illustration

£80 - 120



Lot 824

825 - A BURMESE HARDWOOD CENTRE TABLE the rectangular top with a leaf and flower frieze the centre carved with leaf and flower spandrels with a vacant reserve above two frieze drawers, leaf carved apron raised upon fret carved foliate and leaf sides, 31"x35"x33"

See illustration on page 66

£50 - 80

826 - AN ANGLo INDIAN MIRROR BACK MARBLE SIDEBOARD the pediment carved with a vase of blooms flanked by winged horses, leaf carved frieze above flowers and leaves above a central mirror flanked by panelled glazed cabinet doors the bowfront white marble above an arrangement of three drawers and four carved panel doors decorated with birds amongst branches raised upon paw feet, 96"x48"

See illustration on page 63

£200 - 300

827 - A PAIR OF BURMESE HARDWOOD ELBOW CHAIRS each with leafy C scroll crestings an oval centred with a lyre, outwep arms, serpentine seat raised upon leaf carved cabriole legs, claw and ball feet, (2)

£50 - 80

828 - A BURMESE DRINKS CABINET with a hinged D shape moulded top enclosing two hinge compartments above a frieze carved with figures and a pair of cupboard doors raised upon paw feet 37"x32"

£40 - 60



Lot 832

829 - A BURMESE HARDWOOD CENTRE TABLE with a curvilinear top carved with leaves and berries above hexagonal leaf and berry carved stand 33" high with a circular plate glass top.

£50 - 80

830 - A BURMESE HARDWOOD CENTRE TABLE within quatrefoil leaf carved top with flowers, thistles and fruiting plants raised upon a leaf and flower carved stand, 22" high x 26" £50 - 80

831 - A SILICA CONTINENTAL SETTEE with a leaf and flower carved back with five panel cushions and five loose seat cushions, curvilinear arms raised upon shaped legs, 113"

See illustration

£100 - 150



Lot 835 Lot 833 Lot 834 Lot 826

832 - A SILICA CONTINENTAL DISPLAY CABINET with a shell and leafy cresting above a pair of glazed cabinet doors enclosing two shelves flanked by moulded leafy glazed panels, leaf and flower angles above a leafy frieze and three cabinet doors the centre painted with musician raised upon a curvilinear plinth base and scrolling legs, 86"x 56" *See illustration* £200 - 300

833 - A HARDWOOD CABINET SINGAPORE, LATE 19TH EARLY 20TH CENTURY with a leaf and animal cresting above a dentil cornice and a lions mask with scrolling leaves and flowers above a pair of mirrored cabinet doors enclosing two shelves the lower part with a rectangular moulded top above two short frieze drawers and a pair of glazed cabinet doors with outset fluted columns, leaf carved apron raised upon paw feet, 94"x45" *See illustration on page 66* £200 - 300

834 - A SET OF (10) DINING CHAIRS IN THE CHIPPENDALE STYLE 20th Century reproduction each with leafy crestings above foliate vase shape splats, padded seats raised upon shaped aprons leaf carved cabriole legs, claw and ball feet (10) *See illustration* £400 - 600

835 - A 19TH EARLY 20TH CENTURY OVAL MAHOGANY AND BRASS INLAID MARBLE TOP DINING TABLE the 90" diameter veined marble top above a frieze inlaid with brass stringing raised upon four outset legs, raised upon a plinth base 29" high. *See illustration* £200 - 300

836 - A HARDWOOD OPEN BOOKCASE SINGAPORE LATE 19TH EARLY 20TH CENTURY the rectangular top above a dentil and flower frieze, two shelves flanked by leafy columns above dogs of fo raised upon a leaf carved base, 46"x52" £100 - 150

837 - A SET OF FIVE VICTORIAN OAK DINING CHAIRS each with shaped cresting carved with flowers and leaves, padded backs and seats raised upon front vase shape legs and castors. £100 - 150

838 - A HARDWOOD CENTRE TABLE with a grey veined marble top above a frieze carved with leaves supported by a leaf carved baluster shaft, four outswept supports terminating in quadruple downswept paw feet 31" high

See illustration on page 66 £100 - 150

839 - A SILICA CENTRE TABLE with a curvilinear gilt decorated glass top supported by leaf carved curvilinear legs and scroll feet, 20¹/₂"x25¹/₂" £40 - 60

840 - A CONTINENTAL AND PLATE GLASS CENTRE TABLE 20th century reproduction each winged cherub holding flowers 54" £50 - 80

841 - A SET OF SIX SILICA SALON CHAIR ITALIAN each with curvilinear leaf and flower backs with a quatrefoil tapestry panel and shaped seats, foliate aprons raised upon curvilinear legs (6) £150 - 200

842 - A SILICA CONTINENTAL CENTRE TABLE with a shaped gilt decorated plate glass top raised upon four leaf and flower curvilinear supports above a onyx centre raised upon curvilinear legs, 21" high x 48"x28" £80 - 150

843 - A CONTINENTAL SILICA ITALIAN PEDESTAL with a shaped top, scrolling capitals, tapering vase shape centre decorated with flowers and leaves raised upon leaf carved feet, 39" high. £100 - 150

844 - A CONTINENTAL SILICA CHAISE LOUNGE ITALIAN 20TH CENTURY the curvilinear downswept padded back above a serpentine seat with decorated apron and arms 63" and a pair of similar tub chairs (3) £80 - 150

845 - A CONTINENTAL SILICA ITALIAN POUFFE with a hinged padded tapestry seat raised upon four shaped legs 22" diameter £40 - 60

846 - A VERDE ANTICO MARBLE CONSERVATORY TABLE raised upon a leafy branch raised upon four leafy branch supports, 29" high x 36" £50 - 80

847 - A CONTINENTAL SECRETAIRE BOOKCASE with a plain frieze above a pair of glazed cabinet doors and a leaf carved hinged fall front enclosing a sliding secretaire drawer with stationery compartment and an arrangement of six short drawers the lower part with a rectangular top, downswept sides above two short drawers and two leaf carved cupboard doors 91" high x 42" £100 - 150

848 - SPARE LOT

849 - A PAIR OF VICTORIAN DRAWING ROOM CHAIRS each with scale carved backs, button back, padded arms, lions mask, scale carved arms raised upon fluted supports the companion elbow chairs with reduced supports (2)

See illustration £200 - 300



Lot 849

850 - A VICTORIAN MIRROR BACK SIDEBOARD with a shaped bevelled mirror flanked by shelves, lions mask, fruit and leafy panels the lower part of inverted breakfront form above a frieze drawer, two leaf carved cupboard doors flanked on either side by a lions mask leafy cupboards enclosing later drawers raised upon a plinth base, 72" wide £100 - 150

851 - A BURMESE HARDWOOD BUREAU the rectangular top above a hinged fall front carved with dignitaries in landscape, fitted interior above four short and one long drawer raise upon shaped legs 42"x26" £50 - 80

852 - A PADOUK CABINET ON STAND 20TH CENTURY with a cavetto cornice above a plain frieze and two cabinet doors embellished with brass strap work enclosing a shelf, the stand with a rectangular moulded top above a pierced frieze of leaves depicting wild animals raised upon spirally turned supports, leaf carved terminals and shaped block feet 71" x 37" x 16" See illustration £200 - 300

853 - A GEORGE III OVAL MAHOGANY RED WALNUT DINING TABLE possibly Irish with a shaped frieze above shaped curvilinear cabriole legs and pad feet, 29" high x 36½" x 47" £300 - 400



Lot 852

854 - A GEORGE IV INLAID MAHOGANY CHEST OF DRAWERS the rectangular moulded top above an inlaid frieze two short three long graduated drawers flanked by fluted quarter columns raised upon ogee bracket feet, 40"x47"x21" £150 - 200



Lot 855

855 - A CHOICE WILLIAM IV ROSEWOOD GAMES TABLE the rectangular hinged top with a fluted leaf carved top above a panelled lyre and leaf frieze raised upon a fluted leaf carved shaft, quadripartite plinth terminating in quadruple leaf carved downswept supports, leafy brass paw feet raised on castors, 29"x36"x18" See illustration £400 - 600

856 - A 19TH CENTURY MAHOGANY PARTNERS PEDESTAL DESK the rectangular mahogany top inset with a green and gilt tooled writing surface above a frieze drawer each pedestal enclosing four short drawers, a frieze drawer and a panelled cupboard door similarly opposed raised upon a plinth base, 29"x66"x42" See illustration £400 - 600



Lot 856

857 - A CHOICE SET OF EIGHT EARLY VICTORIAN ROSEWOOD DINING CHAIRS each with arched cresting rails, leaf entwined interlinked leafy splats, waisted back, padded serpentine seat raised upon front cabriole legs (8) See illustration £800 - 1200

858 - A GOOD VICTORIAN BRASS COLUMN STANDARD LAMP the square plinth base with outset lobed feet rising to a fluted plinth, fluted column rising to lobed quatrefoil support with a fluted reservoir converted to electricity with a silk shade, 55" excluding fitting. See illustration £200 - 300



Lot 857

859 - A GEORGE III MAHOGANY TRIPOD TABLE with a 21" diameter solid top raised upon a vase shape shaft, triform downswept supports and pad feet, 29" high £100 - 150



Lot 858

860 - A VICTORIAN MAHOGANY BOWFRONT CHEST with a frieze drawer above two short and three long graduated cockbeaded drawers each with turned wood handles raised upon a plinth base and turned feet, 47½"x48" £80 - 150

861 - A GEORGE IV MAHOGANY BOWFRONT SIDE TABLE with a fluted top above two frieze drawers, lacking one handle, raised upon cylindrical turned legs and peg feet, 30"x42" £80 - 120

862 - A GEORGE III STYLE MAHOGANY AND CROSSBANDED SIDE TABLE the rectangular moulded top above three frieze drawers shaped apron raised upon tapering cylindrical legs and pad feet, 30"x36" £80 - 150

863 - AN EARLY 19TH CENTURY MAHOGANY TEA TABLE the rectangular hinged top above a frieze drawer with later alterations raised upon legs of square section, 29"x34" £50 - 80

864 - A GEORGE III MAHOGANY SIDE TABLE above a plain frieze raised upon tapering legs 28"x48" £50 - 80

865 - A GEORGE III INLAID MAHOGANY AND CROSSBANDED DEMI LUNE TEA TABLE with a plain frieze raised upon four tapering legs inlaid with satin wood and line inlays 29½"x36" £100 - 150

866 - A WILLIAM IV MAHOGANY GAMES TABLE the rectangular hinged top with a green beige playing surface above a plain frieze raised upon a fluted lappet leaf shaft, quadripartite downswept legs, brass toes and castors, 29½"x36"x18" closed. £300 - 400



Lot 868

867 - A SET OF SIX GEORGE IV MAHOGANY DINING CHAIRS each with reeded and panelled concave cresting rails above spirally turned splats, stuff over seats raised upon cylindrical tapering legs and peg feet, plain outset rear legs (6) £200 - 300

868 - A GOOD SET OF FOURTEEN REPRODUX HEPPLEWHITE STYLE MAHOGANY DINING CHAIRS each with shield shape backs the pierced splats carved with wheat ears and pendant leaves, padded serpentine seats raised upon plain legs joined by cross stretchers (12 + 2) £500 - 800
See illustration

869 - AN EARLY VICTORIAN MAHOGANY BOOKCASE with a cavetto cornice above a pair of arched cabinet doors the lower part with a rectangular moulded top above two short and two long graduated drawers raised upon a plinth base and bun feet, 93" high x 50"x21½" £200 - 300
See illustration



Lot 869



Lot 870

870 - AN EDWARDIAN INLAID MAHOGANY MIRROR BACK DISPLAY CABINET with a leaf moulded cresting inlaid with a satin and stained wood basket of fruit and flowers, above an oval mirror plate, the spandrels inlaid with ribbon tied baskets of blooms the lower part with a rectangular moulded top above an inlaid frieze above glazed cabinet doors one cracked above two shelves the lower part with a shaped apron raised upon tapering vase shape legs with inlaid satinwood spandrels and line inlays, 83" high x 42" x 16"
See illustration £150 - 200

871 - A VICTORIAN INLAID ROSEWOOD DRAWING ROOM CHAIR inlaid with ribbon tied leaves with a padded back, padded downswept fluted arms, padded seat raised upon fluted leaf carved downswept legs and brass castors £100 - 150

872 - A REPRODUCTION REGENCY STYLE PEDESTAL EXTENDING DINING TABLE raised upon a pair of fluted lobed downswept triform supports with brass shoes and castors 30" x 84 1/2" £100 - 150

873 - A MAHOGANY RECTANGULAR CHEVAL MIRROR supported by tapering supports with urn finials, downswept legs, 61" x 16" £80 - 120

874 - A MAHOGANY PEDESTAL DINING TABLE the cross banded border raised upon two turned shafts and triform down swept feet with brass shoes and casters 29" high x 84" £100 - 150

CARPETS

875 - A NORTH WEST PERSIAN RUG brick red ground, central panel hooked guls 66" x 52" £50 - 80

END OF SALE



Edgeley House Chester, Drawing Room

Wright Manley

AUCTIONEERS
Established 1861

Directions to Beeston Castle Auction

Leaving the Motorway System ...

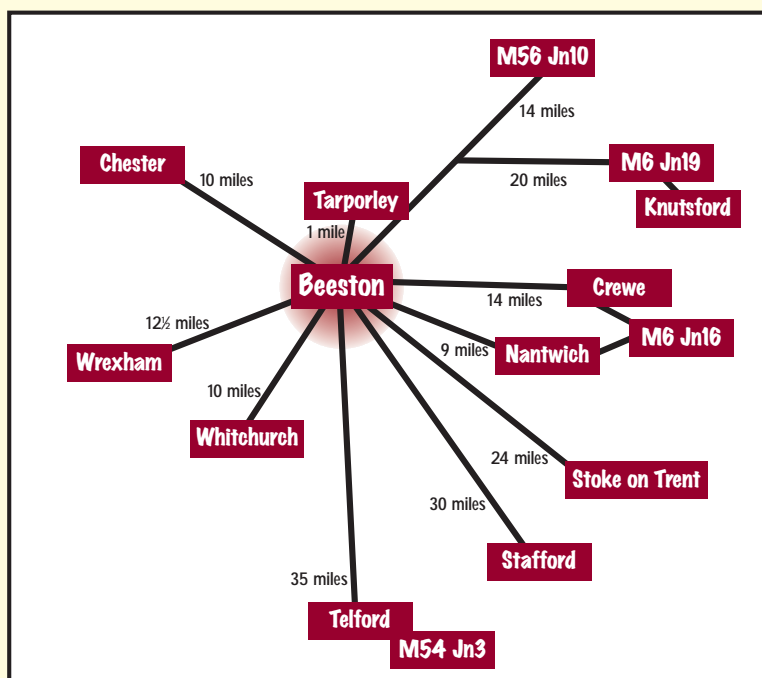
M6 Junction 16 - A500 to Nantwich then A51 Chester turning left onto A49 at Tarporley traffic lights.

M6 Junction 18 - A54 through Middlewich and Winsford until reaching junction with A49 and turning left towards Tarporley.

M6 Junction 19 - A556 through to A49 at Sandiway traffic lights turning left towards Tarporley.

M56 Junction 10 - Follow A49 South to Beeston.

M54 Junction 3 - A41 North to Whitchurch then connecting on A49 on Whitchurch By-pass towards Tarporley.



Rail Services ...

National Rail Enquiries: 0845 7 48 49 50

Rail Europe: 0870 584 8848

Eurostar: 0870 518 6186

There are regular rail services from London Euston to Crewe and Chester

Airports ...

Manchester: 0161 489 3000

Liverpool John Lennon: 0151 288 4000

GENERAL CONDITIONS OF SALE

1. **Definitions.** In these conditions Wright Manley, who act only as auctioneers and agents for the vendor, are called "The Auctioneers", and the representative of Wright Manley conducting the Auction is called "The Auctioneer".
2. **General.** Whilst Wright Manley make every effort to ensure the accuracy of their catalogue and the description of any lot:
 - (a) Each lot as set out in the catalogue or as divided or combined with any other lot or lots is sold by the vendor with all faults, imperfections and errors of descriptions.
 - (b) Wright Manley do not accept responsibility for the authenticity, attribution, genuineness, origin, authorship, date, age, period, condition or quality of any lot, unless they have been instructed in writing by the vendor so to certify, and in such case the Auctioneers do so as agents of the vendor and are not themselves responsible for such claims.
 - (c) All statements, whether printed in the catalogue or made orally, as to any of the matters set out in (b) above are statements of opinion only and are not to be taken as being or implying any warranties or representations of fact by Wright Manley, unless they have been instructed in writing by the vendors so to certify, and in such case the Auctioneers do so as agents of the vendor and are not themselves responsible for such claims.
 - (d) Any claim under any Statute must be received in writing by the Auctioneers within ten days of the day of the sale.
3. **The Auction**
 - (a) The Auctioneer has absolute discretion to divide any lot, to combine any two or more lots, to withdraw any lot or lots from the sale, to refuse bids, regulate bidding or cancel the sale without in any case giving any reason or without previous notice. He may bid on behalf of the vendor for all goods which are being offered subject to reserve or at the Auctioneer's discretion.
 - (b) The highest bidder shall be the buyer except in the case of a dispute. If during the auction the Auctioneer considers that a dispute has arisen, he has absolute discretion to settle it or to re-offer the lot. The Auctioneer may at his sole discretion determine the advance of bidding or refuse a bid.
 - (c) Each lot is put up for sale subject to any reserve price placed by the vendor. Where there is no reserve price (but not otherwise) the seller has the right to bid either personally or by any one person (who may be the Auctioneer).
 - (d) All conditions, notices, descriptions, statements and other matters in the catalogue and elsewhere concerning any lot are subject to any statements modifying or affecting the same made by the Auctioneer from the rostrum prior to any bid being accepted for the lot.
4. **Rescission.** Notwithstanding any other terms of these Conditions, if within fourteen days after the sale Wright Manley have received from the buyer of any lot notice in writing that in his view the lot is a deliberate forgery, and within twenty-one days after such notification the buyer returns the same to Wright Manley in the same condition as at the time of sale and by producing evidence, the burden of proof to be upon

the buyer, satisfies Wright Manley that considered in the light of the entry in the catalogue the lot is a deliberate forgery, then the sale of the lot will be rescinded and the purchase price of the same refunded. In the event of a dispute then the matter shall be settled by arbitration, the arbitrator to be nominated by the President of the Royal Institution of Chartered Surveyors. Both the buyer and the vendor agree to be bound by the decision.

5. **Default.** Wright Manley disclaim responsibility for default by either the buyer or the vendor because they act as agents for the vendor only and therefore do not pay out to the vendor until payment is received from the buyer. Instructions given by telephone are accepted at the sender's risk and must be confirmed in writing forthwith.
6. In the event of a sale by private treat both the vendor and the buyer agree to be bound by the General and any Special Conditions of Sale.

VENDORS CONDITIONS

7. **Instructions.** As Wright Manley are auctioneers, all goods delivered to Wright Manley's premises will be deemed to be delivered for sale by Auction unless otherwise stated in writing and will be catalogued and sold at Wright Manley's discretion and accepted by Wright Manley subject to all the Sale Conditions. By delivering the goods to Wright Manley for inclusion in their auction sales each vendor acknowledges that he or she has accepted and agreed to be bound by all these conditions.
8. **Collections.** Wright Manley do not themselves usually undertake the collection of goods but will, if required in writing, instruct a contractor on the vendor's behalf in their capacity as agents. Wright Manley disclaim all responsibility for loss or damage to goods or for unauthorized removal of goods and for damage to premises caused by the contractor who should be insured for such risks. Unless instructions are received to the contrary the charge for these services will be normally deducted from the proceeds of sale.
9. **Loss or Damage.** Wright Manley disclaim all responsibility for loss or damage to goods or for unauthorized removal of goods unless caused by the direct negligence of their employees.
10. **Storage.** Wright Manley reserve the right to store or arrange for the storage of goods delivered to them for sale either on their own premises or elsewhere at their sole discretion. They exempt themselves from any liability for loss or damage to goods delivered to their sale rooms without sufficient sale instructions and reserve the right to make a minimum storage charge at 25p per lot per day for such goods (unless the loss or damage is caused by the negligence of their employers).
11. **Right to Sell.** Vendors will be charged for goods left on the premises if the vendor has been requested to remove them and if the goods are not removed within twenty-one days of such request. Wright Manley reserve the right to sell the goods to defray costs and storage charges.
12. **Loss and Damages.**

Wright Manley are not regulated by the F.S.A for the provision of insurance to it's clients WRIGHT

MANLEY for its own protection covers property stored on our premises against the risk of fire, burglary and water damage. If you need to make a claim the value of your goods will be based on the lower sale estimate, if sold it is covered at the hammer price.

13. Reserves.

(a) All goods are put up for sale WITHOUT RESERVE at the Auctioneer's discretion unless written instructions as to reserves are received by Wright Manley prior to the commencement of the sale.

(b) In the event of any reserve price not being reached at auction Wright Manley are empowered to sell after the auction, by private treaty, at not less than the reserve price, as long as the goods remain on Wright Manley's premises. In the event of such a sale by private treaty the Conditions of Sale applicable to a buyer governing the auction will apply.

14. Indemnity. The vendor shall duly indemnify Wright Manley against any claims in connection with any goods sold by Wright Manley on the vendor's behalf.

15. Value Added Tax. A vendor who sends for sale by auction or private treaty any item which is an asset of his business must disclose to the Auctioneer whether or not he is a registered person for Value Added Tax purposes in the UK or any other EU country and if so, declare his registered number and whether or not he intends to operate the margin scheme for second hand goods. This information must be supplied to the Auctioneer on or prior to the items being released to the Auctioneer.

16. The vendor authorizes the Auctioneer to deduct commission and expenses at the stated rates from the hammer price and acknowledges the Auctioneer's right to retain any premium payable by the purchaser.

17. Rights to Photographs and Illustrations. The vendor gives Wright Manley full and absolute right to photograph and illustrate any lot placed in its hands for sale and to use such photographs and illustrations and any photographs provided by the vendor at any time at its absolute discretion (whether or not in connection with the auction).

BUYERS CONDITIONS

18. Inspection. Each buyer by making a bid for a lot acknowledges that he has satisfied himself fully before bidding by inspection or otherwise as to all the Sale Conditions, the physical condition of any description of the lot including but not restricted to whether the lot is damaged or has been repaired or restored.

19. Property and Risk. Legal title will not pass to the buyer until the lot(s) has been paid for in full and the Auctioneers shall be entitled to a lien on any lot until the purchase price (as defined in 22 below) is paid in full but each lot is at the sole risk of the buyer from the fall of the hammer. Each buyer shall forthwith give his full names and permanent address and if called upon to do so by the Auctioneer shall forthwith pay to Wright Manley such proportion of the purchase price as the Auctioneer may require. If the buyer fails to do so, the lot may at the Auctioneer's sole discretion be put up again and re-sold.

20. Every bidder shall be deemed to act as principal unless there is in force a written acknowledgement by Wright Manley that he acts as agent on behalf of a named principal.

21. Removal of Goods.

(a) No purchase shall be claimed or removed until it has been paid for and the sale has been concluded. All purchases shall be paid for and removed at the buyer's risk and expense by the end of the second working day after the sale, failing which the Auctioneer shall not be responsible if the same are lost, stolen, damaged or destroyed, and all lots not so removed shall remain at the risk of the buyer and subject to a minimum warehousing charge of 25p per lot per day. If they are not paid for and removed within seven days of the sale the Auctioneer may re-sell them by auction or privately without notice to the buyer. Any liability which there may be on the part of the Auctioneer in respect of any loss shall be restricted to a maximum of the price paid by the buyer of the lot.

(b) In the event of any failure of the buyers to comply with any of the above conditions the damages recoverable by the seller or the Auctioneers from the defaulter shall include any loss arising on any re-sale of the lot, together with the charges and expenses in respect of both sales, and together with interest at 2% above Barclays Banks PLC Base Rate upon the price of any lot which has not been paid for within 48 hours of the sale, and any money deposited in part payment shall be held by the Auctioneers on account of any liability of the defaulter to them or to the seller. The Auctioneers are unable to accept payment from successful bidders other than in cash, credit card, debit card, or by the bidder's own cheque. Cheques drawn by third parties, whether in the Auctioneer's favour or requiring endorsement, cannot be accepted.

22. Purchase Price. The purchaser shall pay the hammer price together with a premium of 17.5% of the hammer price (adjusted for VAT as necessary). The premium at the appropriate rate is payable by all purchasers. The amount invoiced in respect of the premium will be inclusive of VAT but this VAT will not normally be recoverable by the buyer. The vendor authorises the Auctioneer to deduct commission and expenses at the stated rates from the hammer price and acknowledges the Auctioneer's right to retain the premium payable by the purchaser.

IMPORTANT NOTES FOR BUYERS

BIDS

We will be pleased to execute bids on behalf of intending buyers, and no charge is made for this service. Lots will be purchased as cheaply as permitted by other bids and reserves. Bids must be submitted to the Commissions Department at least one hour before the sale commences, and should be entered on the forms provided. Bids left by telephone will be accepted only on the condition that they are at the sender's risk, and must in any case be confirmed in writing.

EXPORT LICENSES

An Export Licence is required for certain items leaving the United Kingdom. The obtaining of a relevant Licence is the responsibility of the buyer.

OWNERSHIP

Lots marked with an asterisk belong to either a member of staff or a member of their family.

WRIGHT MANLEY COMPREHENSIVE COUNTRYWIDE FINE ART SERVICE

THE WRIGHT MANLEY COUNTRYWIDE SERVICE TO SOLICITORS AND EXECUTORS

Wright Manley offers a complete valuation and house clearance service, from immediate preliminary inspection – without charge – for Insurance, Probate, current Saleroom Value and Family Division to same-day removal if necessary.

Academic, rare or valuable items are retained for Wright Manley's internationally-promoted Fine Art Catalogue Sales.

SPECIALIST COLLECTORS SALES

Wright Manley hold specialist Fine Art and Collectors' Sales, Country House Sales on clients' premises and Collective Sales. Whether you have a single item or complete house contents WRIGHT MANLEY can help.



William Witter M.R.I.C.S.
BEESTON CASTLE SALEROOMS
Tarpotley, Cheshire CW6 9NZ
Tel: 01829 262150

SUCCESSFULLY SOLD IN 2011



Lot 144 – A rare set of four silver hatching chicks – Sold for £1,100



Lot 457 – An unusual Crawford's byplane air service biscuit tin – Sold for £750



Lot 611 – A George 11 oak and pollard inlaid longcase clock – Sold for £6,000



Lot 652 – Braq-Brian Shields "Fetch it Cindy", oil – Sold for £7,200



Lot 247 – Omar Ramsden large commemorative cigarette box, London 1936 – Sold for £5,600



Lot 659 – Edwin Frederick Hold "Three Heavy Horses in a Farnyard with a collie dog, poultry & labourers" – Sold for £1,700

ENTRIES ARE NOW BEING ACCEPTED FOR OUR FORTHCOMING FINE SPRING ANTIQUE AUCTION



Lot 112