

Wright Manley

CELEBRATING 150 YEARS

1861

AUCTIONEERS

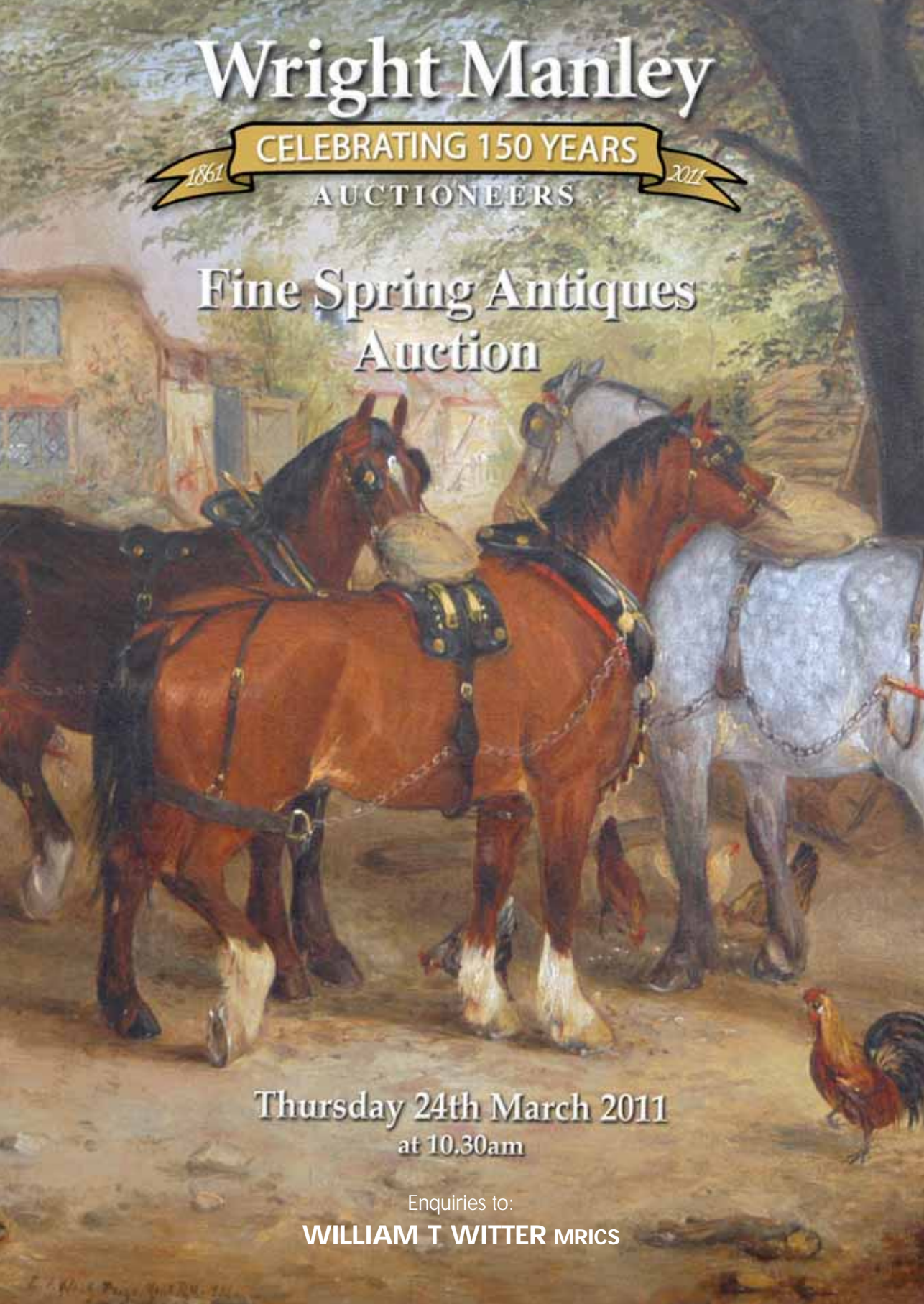
2011

Fine Spring Antiques Auction

Thursday 24th March 2011
at 10.30am

Enquiries to:

WILLIAM T WITTER MRICS





Wright Manley

— AUCTIONEERS • Established 1861 —

FINE ART & ANTIQUE VALUERS, CHARTERED AUCTIONEERS, LAND & ESTATE AGENTS

RESULTS FROM OUR RECENT FINE ART AUCTION



LOT 678 - An early 19th century mahogany longcase clock – Sold for £1,100



LOT 669 - A miniature Faience mounted carriage timepiece – Sold for £1,350



LOT 709 - Victorian oak and mahogany breakfront housekeepers cupboard – Sold for £1,550



LOT 28 - A gentleman's single stone diamond ring Sheffield 1975 – Sold for £1,300



LOT 247 Omar Ramsden large commemorative cigarette box, London 1936 – Sold for £5,600



LOT 376 - A Shelly Butterfly wing pattern Art Deco tea service – Sold for £1,350



LOT 652 - Braaq-Brian Shields "Fetch it Cindy", oil - Sold for £7,200



LOT 254 - An impressive table centre pierce – Sold for £800

Our Next Fine Antiques Auction
will be on

THURSDAY 23rd JUNE 2011

Please contact

Lillian Rogerson on:

01829 262150 or email: billwitter@wrightmanley.co.uk



WRIGHT MANLEY

AUCTIONEERS

Established 1861

FINE SPRING ANTIQUES AUCTION

Thursday 24th March 2011
at 10.30 am

ORDER OF SALE

Over 850 Lots, including Jewellery & Watches 1-120, Plated ware 121-141, Silver 142-212, Metal ware 218-240, Glassware 245-253, Beswick 260-277, Ceramics 278-350, Oriental 351-378, Collectors 379-491, Toys 492-504, Books 505-570, Sporting 572-583, Prints 585-626, Water Colours 631-651, Oil Painting 655-686, Barometers 690-691, Mantel 692-699, Wall Clocks 703-706, Longcase 710-717, Oak Furniture 722-786, English Furniture 790-869, Carpets 870-875, Garden 880-894

Entry by Catalogue

VIEWING

Sunday 20th March	10.00am-4pm
Monday 21st March	10.00am-4pm
Tuesday 22nd March	10.00am-4pm
Morning of sale	from 8.30am

Front Cover – Lot 659

Purchase and Delivery

Please ensure that your bids are left with reception as early as possible and at least one hour before the sale. Telephone lines must be booked no later than 2pm day prior to sale; otherwise we can not guarantee a line.

All items to be paid and cleared by 12 noon Saturday 26th March 2011

Catalogues from and Enquiries to:

Williams Witter MRICS
Beeston Castle Salerooms
Tarpoley, Cheshire, CW6 9NZ
Tel: 01829 262150 Fax: 01829 261829
Email: billwitter@wrightmanley.co.uk
Web: www.wrightmanley.co.uk

Catalogues £5 (£6 by post)

This sale is subject to the conditions of business on display in the saleroom

FORTHCOMING ANTIQUE & GENERAL SALE
THURSDAY 7TH APRIL 2011

Viewing Wednesday 6th April 2011

JEWELLERY & WATCHES

1 - A GRADUATED CULTURED PEARL NECKLACE 16" long, set with a 9ct barrel shaped white gold clasp. Original certificate and box

£110 - 130

2 - A LADIES OMEGA 9CT GOLD BRACELET WATCH manual wind, circular dial

£200 - 300

3 - A RUBY AND DIAMOND MARQUISE SHAPED RING in 9ct yellow gold

£80 - 100

4 - A SINGLE STONE DIAMOND RING in twisted 18ct mount also sapphire and diamond cluster ring in 18ct gold (one diamond missing), and opal pendant

£80 - 120

5 - AN EMERALD AND DIAMOND CIRCULAR CLUSTER RING in 9ct gold, a matching pair of emerald and diamond earrings and also emerald and diamond cluster pendant and chain 18" fine gold 9ct

£80 - 120

6 - A RUBY AND DIAMOND CLUSTER RING in 9ct yellow gold, a cameo and 9ct gold dress ring, two pairs of earrings unhallmarked gold and also a cameo brooch rolled gold.

£40 - 60

7 - A CULTURED PEARL RING EARRINGS AND BAR BROOCH (with two pearls) all set in 14ct yellow gold - stamped "585"

£130 - 150

8 - A PINK SAPPHIRE AND DIAMOND CLUSTER RING MODERN. Central oval cut sapphire estimated to weigh 3.15cts. and mounted with a two teired border set with uniform brilliant cut diamonds (total estimated weight 1.20cts). *See illustration*

£1500 - 2000



Lot 8

9 - A GENTS 9CT OMEGA STRAP WATCH, plain batons with a manual wind.

£200 - 300

10 - A SMALL OVAL CAMEO BROOCH in 9ct yellow gold, also a pearl and sapphire unhallmarked gold ring.

£60 - 80

11 - A STAINLESS STEEL AND DIAMOND GENTS BRACELET.

£30 - 40

12 - A "TIFFANY" SILVER HEAD GRADUATED NECKLACE.

£25 - 35



Lot 18

13 - AN OVAL AMETHYST AND 9CT GOLD RING with heavy mount.

£70 - 90

14 - A RECTANGULAR AMETHYST RING, scroll mount in 9ct gold.

£75 - 95

15 - AN OVAL LARGE PALE CITRINE RING IN 9CT YELLOW GOLD.

£40 - 60

16 - A TRIANGULAR LARGE PALE CITRINE RING in 9ct yellow gold.

£30 - 50



Lot 19

17 - A RUBY AND DIAMOND CLUSTER RING, central oval ruby approx 1.00ct, surround by ten brilliant cut diamonds, total weight approx 0.70cts, set in unhallmarked gold, valued as 18ct gold.

£500 - 700

18 - A LARGE AQUAMARINE RING MODERN Claw set stone estimated to weigh 14.10cts.

See illustration £3000 - 4000



Lot 20

19 - A SINGLE STONE DIAMOND RING

MODERN. Central claw set emerald cut ring estimated to weigh 0.90ct. and with a brilliant cut diamond on each shoulder (each estimated to weigh 0.15ct).

See illustration

£3000 - 4000



Lot 21

20 - A THREE STONE EMERALD AND

DIAMOND RING MODERN. Central circular cut emerald estimated to weigh 0.74ct and with a single brilliant cut diamond on each shoulder (each estimated to weigh 0.35ct). Claw set throughout.

See illustration

£1300 - 1700

21 - A SINGLE STONE DIAMOND RING

MODERN. Claw set radiant cut stone estimated to weigh 1.42ct. *See illustration*

£3000 - 4000

22 - A PAIR OF PLAIN IRREGULAR

HEXAGONAL SLEEVE LINKS MODERN

£40 - 60

23 - A PAIR OF PERIDOT, BLUE TOPAZ AND

CITRINE DROP EARRINGS MODERN. Square articulated sections with white sapphire borders. peg and butterfly fittings.

£180 - 220

24 - AN EMERALD AND DIAMOND CROSS-OVER RING MODERN.

Claw set square cut emeralds and uniform channel set brilliant cut diamonds.

£180 - 250

25 - A DIAMOND STAR PENDANT MODERN. Set with graduated peg set diamonds and suspended from a small curb link chain. (2)

£220 - 280

26 - A DIAMOND RING MODERN.

Central line of uniform baguette stones (estimated total weight 0.60ct) and with borders of smaller uniform claw set brilliant cut stones (total estimated weight 0.30ct).

£400 - 600

27 - A RUBY AND DIAMOND HALF ETERNITY RING MODERN.

Three rub over set oval rubies interspersed by uniform channel set radiant cut diamonds (estimated weight 0.50ct).

£400 - 600

28 - A CITRINE AND DIAMOND RING MODERN.

Central claw set square cut citrine mounted with a border and shoulders of uniform peg set brilliant cut diamonds (total estimated weight 0.80ct).

£500 - 700

29 - A LARGE LEMON QUARTZ AND DIAMOND THREE STONE RING MODERN.

Central mixed cut claw set quartz measuring 12.1x11.4x8.5mm and with a single claw set brilliant cut diamond on each shoulder (each estimated to weigh 0.20ct).

£600 - 800

30 - A YELLOW SAPPHIRE, AMETHYST, PERIDOT AND DIAMOND PENDANT MODERN.

Cushion design with low barrel profile. £600 - 800

31 - A DIAMOND CLUSTER RING MODERN.

Larger central brilliant cut stone (estimated to weigh 0.20ct). Within a border of six smaller uniform brilliant cut diamonds (total estimated weight 0.60ct). Claw set throughout.

£750 - 950

32 - A SINGLE STONE RUBY RING MODERN.

Claw set oval ruby (estimated to weigh 2.75cts). Cross over diamond shoulders peg set with small uniform peg brilliant cut stones on shoulders (total estimated weight 0.30ct).

£800 - 1200

33 - A FASHIONABLE NECKLACE MODERN.

Comprising three thin wires set with three central button fresh water pearls, pink, white and peach colours respectively. Central wire also has a collet set diamond (estimated weight 0.50ct). Small twist closing barrel clasp. 6grams gross. Cased by Boodle and Dunthorne.

See illustration

£220 - 270

34 - A DIAMOND, SAPPHIRE, RUBY AND GREEN GARNET TRIPLE CLUSTER RING

CIRCA 1990.

£300 - 500

35 - A LADY'S OPEN FACED POCKET WATCH

CIRCA 1900. Swiss control mark on reverse cover.

£50 - 70

36 - AN ATTRACTIVE 9CT GOLD SEVEN STONE DIAMOND RING BIRMINGHAM 1982.

Small uniform eight-cut diamonds (total estimated weight 0.20ct) mounted in heart settings.

£150 - 200

37 - A SWISS SILVER LADY'S OPEN FACED

POCKET WATCH CIRCA 1880. White enamelled dial with central wreath design and black roman numerals. Blue steeled hour and minute hands. Gilt barred key wound cylinder movement, width 30mm.

Also a larger pocket watch Birmingham 1893 (poor condition), another small Swiss silver open face pocket watch and a silver wristwatch (poor condition and rusted), imported Glasgow 1903.

£50 - 70

38 - A 9CT GOLD HALF HUNTER POCKET

WATCH CHESTER 1929. White enamelled dial with black arabic numerals and quartered hours. Subsidiary seconds dial at six o'clock. Blue steel hour and minute hands, Jewelled lever keyless movement with fine adjustment, 40mm. Perspex watch glass.

£300 - 500



Lot 38



Lot 39

39 - AN OPAL, DEMANTOID GARNET AND DIAMOND BROOCH CIRCA 1910. Central oval opal with surround of small uniform demantoid garnets and an outer border of small old cut diamonds in the form of a wreath. Suspended from a bar brooch of later date. *See illustration* £2500 - 3500

40 - AN 18CT GOLD SAPPHIRE AND DIAMOND RING BIRMINGHAM 1996. Central oval sapphire (estimated to weigh 1.03cts) mounted within a scalloped border of ten uniform brilliant cut stones (total estimated weight 0.50ct). Rub over settings throughout. Shank with sizing beads applied. *See illustration* £450 - 650

41 - A WELSH SILVER HINGED BANGLE MODERN. 'D' profile design with roped borders 13grams. Also a pair of 9ct gold ear studs London 2000, of petallic design. 3grams. (2) £50 - 70

42 - A TWO COLOURED 9CT WELSH GOLD NECKLACE MODERN. decorative foliate oval design. 9grams £100 - 150

43 - A THREE STONE DIAMOND CROSS-OVER RING, CIRCA 1990. Slightly graduated claw set brilliant cut stones (total estimated weight 0.35ct). £150 - 250

44 - A DECORATIVE PLATINUM WEDDING RING LONDON 1996. 3grams £70 - 90



Lot 40

46 - A LARGE OVAL JET BROOCH LATE NINETEENTH CENTURY. Loosely woven ribbon design, base metal pin. Width 5.8cms. Also a graduated faceted bead necklace. (2) £60 - 80

47 - TWO SILVER BROOCHES, A MARCASITE RING AND A MARCASITE LIZZARD BROOCH ALL LATE NINETEENTH CENTURY (4) £60 - 80

48 - AN 18CT GOLD FIVE STONE DIAMOND RING CHESTER 1898. Graduated old cut diamonds (total estimated weight 0.90ct) claw set in a carved gallery. Each stone interspersed by very small diamonds, some missing £400 - 600



Lot 48

49 - A LARGE SHELL CAMEO BROOCH BIRMINGHAM 1974. Depicting a lady's head. Stylised scalloped border. length 5cms. Also a gem set tie pin circa 1900. (2) £60 - 80

50 - AN EDWARD VII SOVEREIGN 1910 PENDANT. 9ct gold push fit mount London 1979. £120 - 170

51 - A DECORATIVE HONEYCOMB BRACELET CIRCA 1980. Links of decorative design with a plain line in centre and on borders. 51 grams. £900 - 1200

52 - A 15CT GOLD AND HALF PEARL RING CHESTER 1888. Geometric design with decorative shoulders. £70 - 90

53 - A LADY'S MANUAL WIND WRISTWATCH CIRCA 1980. Brushed champagne dial with applied baton numerals. Associated 9ct gold braided bracelet with Omega emblem on clasp. £220 - 270

54 - A 9CT GOLD LADY'S AVIA WRISTWATCH BIRMINGHAM 1980. Silvered dial with applied arabic and tapered numerals. Unsigned jewelled nickle movement, diameter 19mm. Narrow articulated bracelet London 1984. £90 - 150

55 - A PEARL AND OPAL BAR BROOCH, A MARCASITE AND IMITATION PEARL RING, A GARNET CLUSTER RING AND A SHORT NECKLET. (4) £50 - 70

56 - A 22CT GOLD RING LONDON 1868, 4grams and another wedding ring probably of similar quality (hallmarks rubbed), 3grams. (2) £80 - 150

57 - A GEORG JENSEN AMOBIUS DANISH SILVER BANGLE, design by Torun M. Model number 206. £180 - 250

- 58 - A GEORG JENSEN DANISH SILVER KNOT BANGLE.** Designer Andreas Nikkel. Narrow design with spring clasp. Model number A44C. £100 - 150
- 59 - A GEORG JENSEN DANISH SILVER SPLASH BROOCH.** Model number 325. £180 - 250
- 60 - A GEORG JENSEN DANISH SILVER ROBIN FATBIRD BROOCH.** Model number 320. £150 - 200
- 61 - A TWIN MOTIF GEORG JENSEN DANISH SILVER SPLASH BRACELET.** One motif detachable to form pendant. Model number 429b. Pink strap. £120 - 170
- 62 - A GEORG JENSEN CLEOPATRA DANISH SILVER BANGLE,** design by Hans Hansen. £180 - 250
- 63 - A GEORG JENSEN DANISH SILVER CAVE BRACELET.** Large and small interlocking spheres forming central motif. Model number 509. £300 - 500
- 64 - A GEORG JENSEN DANISH SILVER PEAK BANGLE.** £180 - 250
- 65 - A GEORG JENSEN CLEOPATRA DANISH SILVER BANGLE.** £180 - 250
- 66 - AN AMETHYST AND DIAMOND RING CIRCA 2000.** Central faceted fancy cut amethyst mounted in a stylised rub over setting with a line of small uniform channel set brilliant cut diamonds on each shoulder (estimated total weight 0.70ct (one stone missing). Shank damaged. £150 - 250
- 67 - A CABOCHOON AMETHYST RING WITH MATCHING EARRINGS AND PENDANT ON CHAIN MODERN.** Plain borders. (4) £150 - 250
- 68 - AN OVAL AMBER PENDANT MODERN** and a five stone blue and white sapphire ring Birmingham 2002. Also a coral bead necklace and drop earrings (4) £120 - 170
- 69 - A UNIFORM SINGLE ROW CULTURED PEARL NECKLACE MODERN.** Each stone 6.2mm. Length 43cms. Also a pair of clip cultured pearl earrings, each pearl 8.2mm and another similar pair. (3) £60 - 80
- 70 - AN OVAL LOCKET PENDANT MODERN.** Plain design with a central oval design on the front and suspended from a small box link chain. 13grams (2) £90 - 120
- 71 - A TWO COLOURED 18CT GOLD AND BLUE TOPAZ HEART SHAPED, DAVID ROBINSON LONDON 1999.** Bold reeded border and with millenium assay mark. Associated ring box. £200 - 400
- 72 - A LARGE TWO COLOURED 9CT GOLD SAPPHIRE AND DIAMOND OVAL CLUSTER RING BIRMINGHAM 2001.** Central sapphire set with fancy claws and within a stylised scalloped border set with small eight-cut diamonds. £200 - 400
- 73 - A DECORATIVE DIAMOND, RUBY AND MOONSTONE BROOCH MODERN.** Two coloured stylised design with graduated stones mounted in rub over settings. £200 - 400
- 74 - A 9CT GOLD SAPPHIRE AND DIAMOND PENDANT BIRMINGHAM 2003.** Irregular hexagonal design. £150 - 200
- 75 - A SAPPHIRE AND DIAMOND RING MODERN.** Central double claw set oval sapphire with small peg set diamonds on each shoulder £150 - 250
- 76 - A FANCY LINK CHAIN MODERN.** Plain twisted oval and decorative rope link links. Fanct bolt ring clasp. 34grams £350 - 550
- 77 - A MARCASITE AND PLIQUE A JOUR ENAMEL BUTTERFLY BROOCH,** also two pairs of marcasite earrings and a gemset pendant. Various designs (4) £60 - 80
- 79 - A WHITE PASTE PENDANT AND MATCHING EARRINGS BY CHRISTIAN DIOR,** signed. Also a pair of white paste plated earrings and matching pendant b bGrosse. With presentation boxes. (4) £60 - 80
- 80 - A SINGLE ROW OF UNIFORM CULTURED PEARLS.** Each stone 8mm. Stylised barrel clasp. Fitted case. £60 - 80
- 81 - A LADYS QUARTZ LONGINES PRESENCE WRISTWATCH.** White dial with black roman numerals. Associated leather strap with Longines emblem on buckle. Accompanied by original documentation. £180 - 250
- 82 - A SHELL CAMEO BROOCH EARLY NINETEENTH CENTURY.** Profile of a lady in relief. Plain and roped mount. £50 - 70
- 83 - AN 18K POCKET WATCH CIRCA 1880.** Attractive dial with black roman numerals and blued steel minute and hour hands. Gilt barred key wound cylinder movement, diameter 32mm. Gilt metal dust cover. Case on reverse with decorative foliate and scroll design. Attached to a gilt metal chain with bolt ring of similar period. (3) £150 - 250
- 84 - A SAPPHIRE AND DIAMOND RING LONDON 1988.** Geometric design with small channel set square cut rubies and graduated peg set brilliant cut diamonds (estimated total weight 0.50ct). Sizing beads applied to inside of shank. £200 - 400
- 85 - A SCOTTISH HARDSTONE DIRK BROOCH CIRCA 1930.** Comprising fancy cut carnelian and connemara marble sections mounted in a plain setting. Yellow glass thistle terminal. Also a Scottish hardstone tie pin circa 1890, with claw set central oval citrine. (2) £120 - 170
- 86 - A SCOTTISH HARDSTONE DIRK BROOCH CIRCA 1890.** Tapered design with fancy cut banded agate, carnelian and bloodstone. Faceted citrine terminal and decorative mounts. £200 - 400
- 87 - A NORWEGIAN SILVER AND BLUE ENAMELLED BUTTERFLY BROOCH MODERN,** a single stone turquoise ring circa 1890 and a turquoise and enamel pendat circa 1905. £120 - 170
- 88 - FIVE BRACELETS FIVE NECKLACES TWO RINGS AND A PAIR OF EARRINGS.** 37grams (13) £280 - 350

89 - A 9CT GOLD MANUAL WIND CUSHION FORM VERTEX WRISTWATCH BIRMINGHAM 1927. Silvered dial with arabic numerals, quartered hours, thin blued steel hands and a subsidiary seconds dial at six o'clock. Jewelled nickle movement, diameter 26mm and with compensation adjustment. Signed throughout. Reverse engraved "Imperial Chemical Company Ltd...". Retailled by The Goldsmiths and Silversmiths Company Ltd. Leather strap of similar period. £80 - 150

90 - A LADY'S MANUAL WIND WRISTWATCH CIRCA 1920. Circular mother opf pearl dial with black roman numerals and quartered hours. Plain hexagonal bezel. Movement unsigned. Plated bracelet. £20 - 40

91 - A SILVER HINGED BANGLE BIRMINGHAM 1921. Good condition. Engraved £30 - 50

92 - A LARGE OVAL SHELL CAMEO BROOCH CIRCA 1880. Depicting a Grecian lady. Plain mount. £50 - 70

93 - A 9CT GOLD LADY'S MANUAL WIND OMEGA WRISTWATCH BIRMINGHAM 1977. Silvered circular dial with applied dot and tapered numerals. Rectangular copper jewelled movement, length 17mm. Signed throughout and with a narrow curb link bracelet. £80 - 150

94 - A HALF-PEARL SWALLOW BROOCH FIRST QUARTER TWENTIETH CENTURY. Two swallows in flight set with graduated half-pears and interspersed by uniform small bouton pearls. Fitted case. £70 - 90

95 - AN 18CT GOLD OPEN FACED TIMEDAY POCKET WATCH BIRMINGHAM 1906. White enamelled dial with black arabic numerals, quartered hours, blued steel hands and a subsidiary seconds dial at six o'clock. Face with plain narrow bezel. Three quarter plate jewelled lever movement, width 36mm. Retailled by Russells, Liverpool. £400 - 600

96 - A TURQUOISE AND DIAMOND CLUSTER BAR BROOCH FIRST HALF TWENTIETH CENTURY. The cluster of earlier period with a small central oval cabochon turquoise within a border of six small collet set rose cut diamonds and applied to a double reeded bar. Fitted case. £70 - 90

97 - AN OVAL 9CT GOLD LOCKET PENDANT BIRMINGHAM 1973. Front with decorative floral design on textured ground. Plain reverse. Suspended from a circular link chain. 20grams gross £180 - 250

98 - A 9CT GOLD VICTORIA SOVEREIGN (1892) RING BIRMINGHAM 1978. Sovereign in decorative mount with lattice work shoulders. 15grams gross. £150 - 250

99 - A VICTORIA SOVEREIGN (1892) RING. The coin applied to an 18ct gold 'D' profile shank Birmingham 1927. 8grams gross. £120 - 170

100 - TWO NARROW GATE LINK BRACELETS. Each of different design and with heart shaped padlock clasps hallmarked Birmingham 1980 and London 1990 respectively. 12grams £90 - 150

101 - A 9CT GOLD LADY'S MANUAL WIND ROTARY WISTWATCH LONDON 1972, on articulated bracelet. 16grams gross £70 - 90

102 - A 9CT GOLD SIGNET RING BIRMINGAM 1915. 2grams. Also a faceted marquise haematite ring and a high quality plated hinged bangle modern. (3) £60 - 80

103 - A 9CT GOLD SAPPHIRE AND DIAMOND CLUSTER RING LONDON 1975 and a 9ct gold ruby and diamond ring. (2) £40 - 60

104 - A 9CT GOLD AND GARNET FIVE STONE RING LONDON 1975. Oval claw set garnets. Also a 9ct gold emerald and diamond cluster ring London 1979. (2) £50 - 70

105 - AN EARLY 9CT MANUAL WIND ROLEX WRISTWATCH IMPORTED LONDON 1922. Circular engine turned dial with arabic numerals in circular surrounds, black quartered hours and decorative blued steel hands. Jewelled nickel movement, width 22mm. Perspex watch glass. Case by Wilsdorf and Davis (W&D) also numbered 23647. Signed Rolex throughout. Base metal and plated flexible bracelet of later date. £120 - 180

106 - AN 18CT GOLD MANUAL WIND VACHERON AND CONSTATIN WRISTWATCH IMPORTED LONDON 1938. Circular silvered dial with applied dotted and arabic numerals, hands missing. Plain bezel. Sixteen jewel circular nickel movement with five adjustments and numbered 39254, width 20mm Case numbered 261766. Bracelet of different grade and of later date. Damaged throughout. £300 - 500

107 - AN UNUSUAL TREFOIL OPAL AND DIAMOND BAR BROOCH, three oval cabochon opals surrounded by nineteen small rose-cut diamonds set in unhallmarked yellow gold. £180 - 200

108 - A TRIPLE CLUSTER DIAMOND AND 9CT WHITE GOLD DROP PENDANT, 21 diamonds in total on a fine 9ct white gold chain. Also, a matching pair of diamond and 9ct cluster earrings. £180 - 220

109 - A 9CT GOLD RED AND WHITE THREE STONE RING, a diamond ring illusion set in 9ct gold, an 9ct gold oval opal and white stone cluster ring, a white stone and 9ct crossover style ring, an oval small 9ct cameo brooch/pendant, also a silver 10z troy (31.3 grams) ingot 1997, silver jubilee. £70 - 90

110 - AN UNUSUAL OLD CUT DIAMOND BROOCH circular and cushion shaped stones, total 12, white milligrain set, yellow collet and bar with safety chain, circa 1880-1900. £300 - 400

111 - A THREE STONE DIAMOND RING CIRCA 1940 set with small brilliant and eight-cut stone and a 22ct gold wedding ring Birmingham 1941. 2grams. Both worn thin. (2) £50 - 70

112 - A GOOD QUALITY HAIR MEMORIAL BROOCH CIRCA 1870. Central oval multy hair design. Within a frame of tubular and knotted design. Reverse engraved "A.C Hime. No19, St. Anns Square Manchester". Smaller heart shaped pendant of later date. £200 - 400

113 - A MANUAL WIND GENTLEMAN'S ASTRAL PLATED WRISTWATCH CIRCA 1975. Silvered dial with applied arabic and tapered numerals. Reversed engraved "British. E.J. Jackson in appreciation of...etc". Leather strap. £40 - 60

114 - A PLATED THOMAS RUSSELL POCKET WATCH CIRCA 1930. White enamelled dial with black roman numerals and quartered hours. Subsidiary seconds dial at six o'clock. £50 - 70

115 - AN 18CT GOLD RETRACTABLE PENCIL SAMPSON MORDAN AND CO LONDON 1913. Plain flat design with central oval cabochon turquoise slider. Engraved on one side "J.R Dunn" in gothic script. £80 - 150

116 - TWO OPEN FACED POCKET WATCHES. One silver circa 1890 and the other imported London 1919. £50 - 70

118 - A SMALL LADY'S RECTANGULAR SILVER WRISTWATCH IMPORTED GLASGOW 1930 with ribbon bracelet and a stainless steel marcasite wristwatch circa 1955, with a silver bracelet. (2) £50 - 70

119 - A DIAMOND BROOCH CIRCA 1925 OF OVAL AND GEOMETRIC DESIGN. A central collet set old cut stone (estimated to weigh 0.33ct) mounted with a smaller brilliant stone on either side (estimated weight of both together 0.35ct), within a lattice work mounted with graduated millegrain set old and eight-cut diamonds (total estimated weight of diamond balance 2.9cts). Decoratively engraved sides. £1500 - 2000

120 - A 9CT GOLD LADY'S MANUAL WIND WRISTWATCH LONDON 1954. Circular silvered dial with applied arabic numerals. Fifteen jewel teneau nickel movement. Articulated bracelet hall marked London 1988 and of geometric design. 13grams gross £80 - 150

PLATED WARE

121 - AN EARLY 20TH CENTURY HANOVERIAN PATTERN PART SERVICE comprising twelve table spoons, eleven table forks, ten dessert spoons, twelve dessert forks, a pair of sauce ladles and a serving spoon, crested, fitted oak case. £30 - 50

122 - SPARE LOT



Lot 128

123 - AN ATTRACTIVE CANTEEN FOR SIX the spoons and forks with slightly swelling terminals comprising two table spoons, six table forks, six dessert spoons, six dessert forks, six soup spoons, six tea spoons, two salt spoons, a mustard spoon, a pair of tongs, twelve knives in sizes and a three piece carving set, all contained in a crossbanded wooden case. £50 - 80

124 - SIX PAIRS OF FISH KNIVES AND FORKS, wooden case 12 pairs of dessert knives and forks with carved ivory handles, wooden case, a cased pair of nutcrackers, a cased set of twelve tea knives, a plain cocktail shaker, a melon pattern EPBM tea pot, a pair of salt cellars, a cushion shaped entree dish, cover and handle, a pair of initialled open work wine coasters with strap work borders, circa 1860, a single Sheffield plate coaster, circa 1840 with crested silver boss, an early 19th century snuffers tray and a souvenir spoon £100 - 150

125 - A TRUMPET SHAPE VASE CENTRE PIECE with three smaller detachable vases, circular base, 13 1/2" high. £70 - 100

126 - A SHALLOW THREE HANDLED BOWL, a cream jug, a victorian swing handled sugar basket and a sifter ladle and a small late victorian bluster canister with hinged cover Sheffield 1899, stamped with stylized foliage, 3 1/2" wide, 110 grams. £60 - 80

127 - A LARGE EARLY 20TH CENTURY CUSHION SHAPED ENTREE DISH COVER AND DETACHABLE HANDLE, Walker & Hall, ornate leafy scroll borders, 13" wide. £30 - 40

128 - A PAIR OF 19TH CENTURY THREE LIGHT CANDELABRA, stamped with scrolls, foliage and grape laden vines, 20" high. see illustration ***** £100 - 200

129 - A REPRODUCTION BELLIED GLASS CLARET JUG with Art Nouveau mounts, 12" high. £60 - 80

130 - A PAIR OF EARLY 20TH CENTURY CORINTHIAN COLUMN CANDLE STICKS, Walker & Hall, 11 1/2" high. £100 - 150

131 - A SHELL SHAPE HORS D'OEUVRES DISH, six soup spoons, a soup ladle, a cased set of twelve beaded tea spoons and a pair of tongs, a case for cigarettes, a hotel ware four piece tea set, a similar pair of breakers, a shallow dish, and a small three piece cruet set, spoons and liners. £30 - 40

132 - A QUANTITY OF PLATE including a late 19th century six bottle cruet frame, a large glass butter dish, cover and base, a pair of modern goblets, a three piece damaged cruet set, a bud vase, two tier cake stand, a set of glass mats, and other items. £30 - 50

133 - A CASED RUSTLES NICKEL SILVER OLD ENGLISH PATTERN CANTEEN OF TWELVE WITH EXTRAS. £30 - 50

134 - FLAT WARE including a pair of plated fruit serving spoons, a Kings pattern serving spoon, a fiddle pattern soup ladle, three other serving spoons, a sifter ladle and two forks. £20 - 30



Lot 141

135 - A OAK CASED OLD ENGLISH PATTERN CANTEEN, INCOMPLETE, comprising four table spoons, ten table forks, twelve dessert spoons, twelve dessert forks, twelve tea spoons, eleven coffee spoons, a pair of sauce ladles, two mustard spoons and a salt spoon, also eleven table knives, ten dessert knives, three carving implements, a pair of tongs and a jam spoon, some wear. £30 - 50

136 - A CASED SET OF SIX PAIRS OF FRUIT KNIVES AND FORKS with bone handles, circa 1870, a cased set of twelve pairs of fish knives and forks with bone handles and twelve pairs of fruit knives and forks with Mother of Pearl handles, serving items missing. £70 - 100

137 - A 1930'S ART DECO FLAT WARE SERVICE comprising six serving spoons, twelve soup spoons, twelve table forks, twelve dessert spoons, twelve dessert forks, eighteen tea spoons, a pair of sauce ladles, twenty four knives in sizes and a three piece carving set, fitted wooden case. £140 - 180

138 - A QUANTITY OF PLATE including a modern circular tea pot and hot water jug, a Tazza with Celtic borders, cocktail shaker, a glass flask with detachable beaker, a gas table lighter, a large seven bar toast rack, an oval entree dish and cover with fixed side handles, a pair of fish carvers, and a serving spoon Elizabethan pattern in case for two. £20 - 40

139 - A CASED PAIR OF FISH CARVERS with Xylonite handles, a cased pair of jam spoons and an oval entree dish cover with detachable handle with beaded borders. £30 - 50

140 - A SET OF SIX FIXED GRAPEFRUIT DISHES AND SAUCERS JAMES DIXON & SONS LTD. £30 - 50

141 - A QUANTITY OF PLATE including a three vase table centre piece, a pair of smaller bud vases, a pair of oriental vases, a small three piece cruet set, a three piece cruet set with frame, a larger incomplete example, a miniature urn, two entree dish shaped butter dishes complete with covers, a six frame egg cup stand (spoons missing), a sugar bowl and ladle, a three piece tea set, a four piece tea set, a large hot water jug with panelled body, complete with stopper and an unusual spirit kettle with internal burner. See illustration £60 - 100



Lot 142

SILVER

142 - A RARE SILVER AND ENAMEL TROUT MENU HOLDER Sampson Mordan and Co, Chester 1905 the enamel roundel depicting a trout in landscape 47.7gms £250 - 400



Lot 144

144 - A RARE SET OF FOUR SILVER HATCHING CHICKS, Sampson Mordan and Co, Chester 1908 to 1910 one with a registration number 502033 83gms £500 - 800

145 - A FINE SET OF FOUR FOX MASK MENU HOLDERS Sampson Mordan and Co, Chester 1910 each well cast with ruby coloured eyes 1" high within a blue velvet lined rectangular box 86gms. See illustration £600 - 800



Lot 145

146 - A SILVER MOUNTED WOODEN ART NOUVEAU PHOTO FRAME BIRMINGHAM 1910, some damage and support missing. £30 - 50

147 - A LATE 18TH CENTURY TODDY LADLE of typical form with turned whalebone handle, the bowl set with an earlier William III shilling £40 - 60

148 - A GEORGE IV OVAL CREAM JUG Joseph Angell London 1824 engraved with a leafy band below the gadroon border, cast handle and on paw feet 6" wide 230gms £80 - 120

149 - AN EARLY VICTORIAN BALUSTER CHILD'S MUG makers mark indistinct London 1840, chased with foliage on matted ground framing an initialled cartouche 4" high 85 gms
See illustration £70 - 100

150 - A GEORGE IV SMALL VINAIGRETTE Nathaniel Mills London 1829, reeded sides, cast floral border £70 - 100

151 - A CASED SET OF SIX LATER DECORATED DESSERT SPOONS, two London 1790, 1826, the other four bottom marked, circa 1770, 210 grams. £80 - 150

152 - A REPRODUCTION HEART SHAPED MIRROR Sheffield 1991, richly decorated 11" high £60 - 100

153 - A VELVET LINED TRINKET BOX WILLIAM COMYNS LONDON 1912, serpentine front and on cast feet, tortoiseshell top with tied reed border 3 1/2" wide £50 - 80

154 - A PAIR OF OVAL SAUCEBOATS Birmingham 1930, tongue and dart borders, flying scroll handles and on three feet 6 1/2" wide £100 - 130

155 - A PAIR OF PLAIN SAUCEBOATS Sheffield 1947, waved everted borders 6 1/2" wide 300gmx £90 - 120

156 - A GEORGE III WINE FUNNEL John Emes London 1799, reeded borders (some damage) 85gms £120 - 150

157 - A SHAPED SQUARE SALVER, Crichton Bros London 1929, Britannia standard, plain border and on four feet 6 1/4" 265gms £100 - 150



Lot 158

158 - A GOOD GEORGE III SALVER John Carter London 1810, gadroon border, engraved with contemporary armorials and on three panelled feet 8" diameter 490gms. *See illustration* £200 - 300

159 - A SHAPED CIRCULAR SALVER Sheffield 1919, engraved with a presentation inscription with tied reeded borders 10" diameter 545gms £150 - 200



Lot 160

160 - A GEORGE III SHAPED CIRCULAR SALVER Robert Rew London 1771 the underside engraved with a presentation inscription dated 1878 and later chased and engraved with armorials at the same time, on three feet 11" wide 750gms.

See illustration £250 - 300

161 - A LARGE VASE SHAPED SUGAR CASTER London 1930, 7" high 225gms.

See illustration £70 - 100

162 - A REPRODUCTION BUN PEPPER London 1929 3 1/2" high 85gms £40 - 60

163 - A REPRODUCTION BALUSTER CASTER London 1929 4" high 55gms £40 - 60

164 - A SMALL DRUM MUSTARD POT with crested lid Chester 1920, reeded borders 70gms, complete with blue glass liner £40 - 60

165 - A MODERN SMALL FIVE BAR TOAST RACK, a larger seven bar toast rack, an initialled Victorian child's mug with spiral lobing, Sheffield 1895, a pair of hair brushes, London 1919 and two faceted cylindrical glass jars with detachable covers and a damaged example and a small crested cigarette box 290gms £100 - 150



Lot 166

Lot 161



Lot 169

166 - A GEORGE IV COMPRESSED CIRCULAR TEA POT Emes and Barnard London 1822, crested above an applied moulded girdle carved ivory and silver flower head finial, rib base, the underside with contemporary inscription, 3 1/2" high 465gms.

See illustration £180 - 250

167 - A RECTANGULAR CIGARETTE BOX with engine turned lid, inscribed and engraved with a Cheshire Yeomanry badge 6 1/4" wide £40 - 60

168 - A PAIR OF VICTORIAN COMPRESSED CIRCULAR SALT CELLARS makers mark CW London 1853, strap work motifs 2 1/2" diameter 135gms £40 - 60

169 - A GEORGE III CIRCULAR SMALL BOWL probably Paul Storr London 1801, crested above a broad band of flutes 4" diameter 190gms. See illustration £200 - 300

170 - A REPRODUCTION FRENCH WINE TASTER D and J Welby, London 1929 3" diameter 95gms £40 - 60

171 - A SHAPED SQUARE SALVER London 1930 engraved with a regimental wedding inscription and on four feet 12" wide 1030gms £250 - 350

172 - A PAIR OF EARLY GEORGE III TABLE CANDLESTICKS Hyatt and Semore, London 1761, the crested bases with four shell corners rising to knopped and fluted stems, matching detachable sconces by John Hyatt 8" high 835 gms £1000 - 1500

173 - A PAIR OF MATCHING EARLY GEORGE III CANDLESTICKS William Caife London 1762, similar crested bases and stems with detachable nozzles 8" high 855 gms £1000 - 1500



Lot 172 Lot 173

174 - A PERPETUAL DESK CALENDAR

Birmingham 1927 (mechanism defected) 8" wide

See illustration

£10 - 20



Lot 174 Lot 176 Lot 182

175 - A SILVER CIRCULAR BOWL with plain lug handle Birmingham 1913, 4 1/4" diameter, 135 grams, an initialled Victorian butter knife (damaged) plated items a shell dish, six attractive tea spoons, pair of tongs, and a syphon stand (base missing). £60 - 100

176 - A REPRODUCTION KATE GREENAWAY PHOTO FRAME stamped with a girl picking flowers, London 1979, 6" high. See illustration £30 - 50

177 - A GLASS WINE CARAFFE with tall silver neck London 1997 complete with stopper, 12" high. £100 - 150

178 - AN AMERICAN SILVER TOPPED CANE, circa 1900 and a ladies small tau handled stick with elaborate silver collar and a larger similar gentleman's stick with plain inscribed collar. £50 - 80



Lot 183

179 - FOUR WILLIAM IV OLD ENGLISH PATTERN TABLE SPOONS, Jonathan Hayne London 1835, crested, 255 grams. £90 - 120

180 - A MODERN CHILD'S TEETHER MODELED AS A SILVER JESTER hung with two bells, Mother of Pearl handle and composition ring, Birmingham 1976. £30 - 50

181 - A PLAIN CIRCULAR BOX with detachable tortoiseshell cover, Birmingham 1925, 2 1/2" dia., and a 19th century circular horn box and cover with banded decoration, 3" diameter. £30 - 60

182 - AN ATTRACTIVE IVORY AND SILVER GILT MOUNTED CONDUCTORS BATON LONDON 1913 AND CIRCA, the centre inscribed "Presented to Sam Myres by Hulme Public Prize Band September 1914", 18" long. *See illustration* £200 - 300

183 - A LATE 19TH CENTURY CONTINENTAL TRINKET BOX, octagonal with electro type panels of county pursuits, 7" wide, 940 grams. *****
See illustration £280 - 350

184 - A VICTORIAN OVAL HIP FLASK BIRMINGHAM 1860, initialled and with screw off cap, 5" high, 110 grams ***** £60 - 80

185 - THREE EARLY 19TH CENTURY TEA SPOONS, a damaged shovel shaped caddy spoon Birmingham circa 1820, two brooches, a small vesta case Chester 1904, a thimble and a modern cigarette case, 220 grams ***** £70 - 90

186 - AN INITIALLED SHAPED CIRCULAR DUTCH PEPPERMINT BOX 1861, 2" diameter ***** £40 - 60

187 - FOUR PAIRS OF VICTORIAN SHELL ENDED DESSERT SPOONS AND FORKS, Edinburgh hallmarked 1857, 1856 and presumed 1852 all sterling silver except one item plated. Weight approx total 300 grams. £80 - 120

188 - THREE ASSORTED SILVER NAPKIN RINGS, SILVER CHILD'S MUG AND EGG CUP/SMALL TROPHY, Weight 165 grams £60 - 80

189 - SIX ASSORTED SILVER TEA SPOONS, PAIR OF SUGAR TONGS AND A BUTTER KNIFE, Approx weight 100 grams. £50 - 70

190 - TWELVE SILVER GEORGIAN TEASPOONS, Old English design, various hallmarks and a silver plated butter knife and sugar tongs, 180 grams. £60 - 80

191 - PAIR OF STERLING SILVER "STUART DEVLIN" PLAIN CHAMPAGNE FLUTES, 8³/₄" high with silver gilt hammered stems, London hallmarked 1978, gross weight 390 grams. £120 - 180

192 - PAIR OF SILVER GOBLETS, LIMITED EDITION "YORK MINSTER" AD71-1971, maker Barker Ellis, Birmingham, hallmarked 1970, gross weight 290 grams. £140 - 180

193 - A STERLING SILVER FOUR PIECE TEA/COFFEE SET in the George 11 style, tea and coffee pots with ebonite handles also cream jug and sugar bowl, maker Cooper Bros, Sheffield, hallmarked 1967, gross weight 2000 grams. £800 - 1000

194 - A SILVER HOT WATER JUG, QUEEN ANNE STYLE, hinged dome lid with upturned handle and finial, maker Richard Comyns, London hallmarked 1962, gross weight 720 grams. £290 - 350

195 - A GEORGE III PRESSED CIRCULAR TEA POT J.E. TERREY, LONDON 1817, applied with a cast band of leafy blooms and similarly chased, rim base, 740 grams. *See illustration* £280 - 350

196 - A VICTORIAN OPEN WORK SWING HANDLED SUGAR BASKET, crested, marks worn, circa 1860, cranberry glass liner, 3¹/₂" high, 175 grams. *See illustration* £50 - 80



Lot 196 Lot 195

197 - A SHALLOW DISH INSCRIBED WITH THE DATE SHEFFIELD 1949 6¹/₄" diameter, two early 20th century cigarette cases, an ash tray, a small three piece condiment set on three feet, Birmingham 1961, complete with blue glass liners, 475 grams. £140 - 180

198 - A FOUR PIECE BALUSTER TEA SET CHESTER 1912-13 with waved borders and on four feet, 1050 grams £300 - 400

199 - A BULBOUS MILK JUG BIRMINGHAM 1928 4" high, 180 grams. £50 - 70

200 - A CASED PLAIN THREE PIECE CRUET SET BIRMINGHAM 1933, a pair of compressed circular salt cellars 1900, 180 grams. £60 - 80

201 - SIX OLD ENGLISH SHELL PATTERN TEA SPOONS, SHEFFIELD 1901, table spoon 1934, an egg cup, a pair of salt spoons, a reeded napkin ring, a child's pusher spoon Birmingham 1901 235 grams, also a cased set of six Mother of Pearl handled tea knives with silver blades Sheffield 1926 and six plated Apostle tea spoons. £80 - 100

202 - THREE OPEN FACED KEY WIND POCKET WATCHES, a damaged early 20th century capstan shape ink well, a damaged compact and a glass butter dish in silver frame. £40 - 60

203 - A GREAT WAR 1914-15 STAR TRIO, names erased. £20 - 30

204 - A VASE SHAPED LEMONADE JUG, OLIVANT AND BUTSFORD, BIRMINGHAM 1904, with a contemporary agricultural inscription 8", 700 grams. £300 - 400



Lot 204



Lot 207

205 - A MODERN CIGARETTE CASE, A DAMAGED HUNTING BROOCH, A DAMAGED SCOTTISH PEBBLE BROOCH AND THREE WHISTLES, 140 grams £40 - 60

206 - A CASÉD MANICURE SET comprising a silver mounted buffer, a pair of silver topped glass jars, four manicure implements, two pairs of scissors, Birmingham 1922 and the following plated items five silver handled tea knives, three similar silver handled forks and number of other serving implements. £30 - 40

207 - A PLAIN CIRCULAR FOUR PIECE TEA SET, SHEFFIELD 1931-32, 1560 grams. See illustration £450 - 550

208 - A BUD VASE BIRMINGHAM 1919, 5" high, a circular commemorative dish marking the investiture of the Prince of Wales Birmingham 1969, 5" dia., and a small change hung purse Birmingham 1904, 240 grams. £80 - 100



Lot 209

209 - AN UNUSUAL LATE 19TH CENTURY CHINA TRADE THREE PIECE TEA SET POSSIBLY WANG LING compressed circular body applied with dragons and clouds, 990 grams. See illustration £300 - 400

210 - A PLAIN GOBLET CHESTER 1914, engraved with a contemporary agricultural inscription, 6" high, 295 grams. £90 - 120



Lot 212

211 - A SILVER STAG HUNTING BON BON DISH Sheffield, 1933 William Hutton & Sons, with a central roundel depicting a stag beside a figure walking beside a horse 5" diameter 125gms £150 - 200

212 - AN UNUSUAL SILVER RUNNING FOX CORKSCREW J.B. Chatterley & Sons Ltd, Birmingham 1966 the silver running fox with garnet eyes, metal worm 4" 76.5gms. See illustration £200 - 300

METALWARE

218 - A 19TH CENTURY GRAIN SCALE the oval frame with a pointer and a brass scale from 20 to 300 11" £40 - 60

219 - A VICTORIAN BRASS AND STEEL SKILLET 12¹/₄" and two brass saucepans with spouts £30 - 50

220 - A VICTORIAN CAST IRON DOORSTOP with an entwined leafy handle 15" see illustration £40 - 60

221 - A VICTORIAN MARTINGALE with a spiral sunburst brass, a First World War screw top shell, one with a hardwood plinth 3¹/₂" £20 - 40

222 - A ALFA LAVAL COPPER AND GUN METAL MILKING UNIT with cover, pulsator and forward clusters, 20" £80 - 150

223 - A 19TH CENTURY BRASS FOOTMAN the rectangular top with a foliate and lyre pierced top raised above a similar frieze, bulbous front legs and paw feet, plain rear legs, 14¹/₂"x17"x12¹/₂" £100 - 150

224 - A VICTORIAN, COPPER AND STEEL SAUCEPAN 11¹/₂" diameter. £20 - 40

225 - A VICTORIAN CAST IRON BOOT SCRAPER with a shaped edge, supported by cabriole legs, paw feet raised upon an octagonal tray, 8¹/₂"x14" See illustration ***** £80 - 150

226 - A VICTORIAN COPPER MEASURE the swelling baluster body raised upon a circular foot with a loop handle 9" high and a similar smaller quart jug 6¹/₂" £40 - 60

227 - A VICTORIAN BRASS SKILLET with an adjustable steel overhead handle 12¹/₂ diameter, and two smaller examples 9¹/₂", 7¹/₂" £40 - 60

228 - A VICTORIAN BRASS LADLE 15¹/₂" and two others 10" approx. £30 - 50

229 - A VICTORIAN COPPER WARMING PAN with a slightly domed cover, turned hardwood handle, 44" and a similar warming pan with a brass cover lightly engraved (2) £40 - 60



Lot 225



Lot 231

230 - A VICTORIAN BRASS PARAFFIN LAMP the circular base rising to a fluted plinth applied with lions masks ogee reservoir with an acid etched later shade 22" high £40 - 60

231 - A SET OF THREE 19TH CENTURY GILT BRASS FIRE IRONS each with vase and leaf decorated handles, scrolling terminals (3) See illustration £100 - 150

232 - A VICTORIAN BRASS STANDARD LAMP with an ogee shape reservoir the turned column resting on a lobed roundel base with three paw feet, 49" high. £50 - 80

233 - A COPPER AND BRASS COAL HELMET with adjustable overhead handle, a brass chestnut roaster, a copper and brass kettle and an Edwardian copper tulip shape vase (4) £40 - 60

234 - A 20TH CENTURY BRASS JARDINIERE with a foliate oval rim, lions mask ringed handles raised upon four paw feet, 16" £40 - 60

235 - A VICTORIAN BRASS SKILLET with a steel handle, a Victorian copper kettle with overhead handle, cover with a acorn finial and a Burmese brass tray 18 1/2" (3) £40 - 60

236 - A LATE 19TH EARLY 20TH CENTURY BRASS AND TIN MINERS LAMP, LG NO: 243 with loop handle, glass panel and burner 9" high £40 - 60

237 - A VICTORIAN GALLON HAYSTACK MEASURE with a loop handle stamped VR6 11 1/2" high £30 - 50

238 - A BRASS PRANCING HORSE 7 1/2" high. £10 - 20

239 - A VICTORIAN BRASS JAM SKILLET with a loop handle 12 1/2", a smaller example 8 3/4", four brass toasting forks, a Victorian copper and brass warming pan with a turned handle, a brass mesh spark guard and two Burmese dishes, ten items £40 - 60

240 - A VICTORIAN BRASS COAL SCUTTLE the hinged fall front with a stamped copper panel decorated with a vase and blooms, ebonised overhead handle and shovel. £50-80

GLASSWARE

245 - A GOOD VICTORIAN RUBY TINTED CLEAR GLASS EPERGNE with a flilled circular trumpet shaped base with two shaped branches with clear glass and two conforming scrolling clear glass wands and a central shaped ruby tinted trumpet, shaped vase, 22" high. See illustration £150 - 200



Lot 245

246 - A LALIQUE SHALLOW BOWL moulded with three flower heads and leaves minor chip to rim 13 3/4" See illustration £150 - 200



Lot 246

247 - AN EARLY 19TH CENTURY CORDIAL with a fluted trumpet shaped bowl, angular knopped stem on a circular base 5 1/4" £20 - 40

248 - A GOOD LARGE CUT GLASS LEMONADE JUG with a facet and lozenge cut body, clear glass handle, 9 1/2" high £40 - 60

249 - AN INCOMPLETE RUBY TINTED EPERGNE comprising a trumpet shape vase spirally clear glass moulded stem 15" high, two shaped branches 8 3/4", two clear glass and ruby hanging baskets 7 1/2", two clear glass spiral wands. £80 - 120

250 - FOUR VICTORIAN CLEAR GLASS GILT AND ENAMEL ELONGATED SCENT BOTTLES "LADIES OF THE NIGHT" the largest 7" (4)
 £100 - 150

251 - A VICTORIAN CELERY GLASS the barrel shape sides facet cut with leaves and flowers raised upon a baluster stem and a circular foot 9" high £20 - 40

252 - A CUT GLASS BOWL ON FOOT facet cut border raised on a circular base 5" high, and a Victorian moulded blue tinted glass handled paraffin lamp.
 £20 - 40

253 - A ROBERT HELD CANADIAN ART GLASS PAPERWEIGHT IN THE TIFFANY STYLE the mottled purple ground with branches 3 1/2", and a 2nd Robert Held glass paperweight with a fluted leafy body decorated in lustrous colours 4" high and a Adrian Sankey Art Glass shallow bowl 6 1/2"
 £50 - 80

BESWICK



Lot 260

260 - A BESWICK MODEL OF ARKLE, PAT TAAFFE UP from the Connoisseur Horses series designed by Arthur Gredington 12 1/2" high issued from 1970 to 1972 and a footnote *** purchased from Christie's Auction, the sale on behalf of the estate of Anne, Duchess of Westminster.

See illustration £200 - 300

261 - A BESWICK MODEL OF A BORERAY SHEEP 4124 designed by Robert Donaldson 4 1/2" issued from 2001 to 2002 from the Rare Breeds series.
 See illustration £40 - 60

262 - A BESWICK MODEL OF A GLOUCESTER OLD SPOT PIG, NO: 6230, designed by Amanda Hughes-Lubeck, issued 1999-2002.
 See illustration £40 - 60

263 - A BESWICK BOY ON A PALOMINO PONY model number 1500 designed by Arthur Gredington 5 1/2" high £200 - 300

264 - A BESWICK COMICAL FOX number 1733 red, brown and white gloss issued from 1961 to 1968
 £50 - 80



Lot 262 Lot 267 Lot 261

265 - A BESWICK HUNTSMAN ON A REARING HORSE model number 868/2 issued from 1952 to 1995
 £180 - 250

266 - A TRIO OF FRIESIANS, FRIESIAN COW CH."CLAYBURY LEEGWATER" designed by Arthur Gredington 4 1/2", issued 1954-1997, Friesian Bull "CH Coddington Hilt Barr" 4 3/4" issued 1956-1997 and calf No: 1249C 2 3/4" issued 1956-1997 (3)
 See illustration £150 - 200



Lot 266

267 - A TRIO OF MALLARD DUCKS, large, medium and small, No's 919a,b, and c, designed by Mr Watkin the largest 3 3/4" issued 1941-1971 and a second medium duck (4) See illustration £40 - 60

268 - A BESWICK THELWELL KICKSTART BROWN PONY WITH LEARNER RIDER 4 1/2"
 See illustration £80 - 120

269 - A BESWICK THELWELL KICKSTART SEATED BROWN PONY with a young rider 3 1/4" high. See illustration £80 - 120

270 - A BESWICK THELWELL SEATED GREY PONY WITH A YOUNG RIDER black printed marks 3" high. See illustration £80 - 120



Lot 268 Lot 269 Lot 270 Lot 271

271 - A BESWICK NORMAN THELWELL GREY PONY WITH A LEARNER RIDER 4 1/2".

See illustration £80 - 120

272 - BESWICK LARGE HUNTER CONNOISSEUR HORSE, 1970, 2nd version, mounted on a plinth base, 12 1/4" high. £50 - 80



Lot 273 Lot 274 Lot 275 Lot 276 Lot 277

273 - A BESWICK JERSEY BULL "CH DUNLSEY COY BOY" designed by Arthur Gredington 4 1/2" issued 1956 to 1997. *See illustration* £50 - 80

274 - A BESWICK JERSEY COW "CH NEWTON TINKLE" designed by Arthur Gredington 4 1/4" issued 1954 to 1997 *See illustration* £40 - 60

275 - SPARE LOT

276 - A BESWICK CHAROLAIS CALF number 18278 designed by Arthur Gredington 3" issued 1985 to 1997. *See illustration* £40 - 60

277 - A BESWICK HEREFORD CALF number 1827C designed by Arthur Gredington 3" issued 1985 to 1997. *See illustration* £40 - 60

CERAMICS

278 - A ROYAL CROWN DERBY JAPAN PATTERN SIX PIECE COFFEE SERVICE boxed £150 - £250

279 - A CHELSEA 20TH CENTURY TREACLE GLAZED STONEWARE SHALLOW SAUCER DISH signed KW decorated in polychrome shades with flowers and leaves 9 1/2" incised Chelsea England £50 - 80

280 - A SYLVAC CENTRE PIECE the vacant centre surmounted with branches and three rabbits, 1812, a long eared rabbit 1304 8" and a pixie and rabbit bowl 6 1/2" £50 - 80

281 - A MEESHAM WARE KETTLE AND STAND the kettle applied with the inscription "To Mr & Mrs Hayhurst, Ingle Borough Farm, Walpole and applied with flowers and leaves 10" high £80 - 120

282 - AN ENGLISH PORCELAIN TEA SERVICE possibly Spode, pattern No: 1360 each piece painted with gilt with flowers and leaves comprising two handled sucrier and cover, four coffee cans, six cups, six saucers and a large saucer dish 7" diameter. ***** £50 - 80

283 - A COPELAND SPODE TOWER PATTERN BLUE AND WHITE TRANSFER PRINTED DINNER SERVICE comprising twelve 10" soup bowls, twelve 10" plates, twelve 9 1/4" plates, two 10 3/4" tureens and covers, twelve 7 1/2" plates, seven graduated stands the largest 15", sauceboat and stand damaged, tureen and stand damaged. £80 - 150

284 - A MACINTYRE, WILLIAM MOORCROFT VASE with an inverted neck the shoulders tapering to the base, the cream ground with gilt bands tube lined with flowers in shades of green, purple and blue, gilt foot rim with raised flowers, neck possibly restored 8 3/4" £150 - 200

285 - AN ENGLISH PORCELAIN ENCRIER 19th century of circular form with a central aperture and three pen holders the frieze painted with English blooms applied with lions masks raised upon four lions paw feet 3 3/4" £40 - 60

286 - A SEMI PORCELAIN BELLMONT PATTERN DINNER SERVICE comprising eight 9" plates, seven 10" plates, seven 8" plates, oval 10" tureen, cover and stand, 18" oval plate, two stands and separate cover. £40 - 80

287 - A ROYAL WORCESTER BLUSH IVORY LEAF MOULDED THREE HANDLED VASE decorated in shades of blue, orange and gilt, red printed marks 3 1/2", a Royal Worcester miniature blush ivory shaped vase decorated with sprays of blooms, red printed marks, a shorter jug moulded in relief with fish and sea creatures 4" £20 - 40

288 - A SPODE SHAPED OVAL PLATE with a gilt rim the border moulded with flowers and leaves and four black and white prints depicting country houses in landscape, red script mark No: 4406, 9 1/2" £40 - 60

289 - A ROYAL DOULTON FIGURE SYLVIA HN1478 designed by L Harradine 10 1/2" issued from 1931 to 1938. £80 - 120

290 - A CONTINENTAL TABLE LAMP 20th century the shoulders tapering to the base with gilt handles decorated with sprays of blooms and leaves with a silk shade 28" high £80 - 120

291 - A ROYAL DOULTON CHARACTER JUG JARGE designed by Harry Fenton large 6 1/2" issued 1950 to 1960 slight hairline crack to base and minor chip to base £30 - 50

292 - A ROYAL DOULTON CHARACTER JUG TOWN CRIER Style one designed by David Biggs large 7" issued from 1960 to 1973 £30 - 50

293 - A ROYAL DOULTON CHARACTER JUG DICK WHITTINGTON designed by Jeff Blower D6375 large 6 1/2" issued from 1953 to 1960 hairline crack to handle £30 - 50

294 - A ROYAL DOULTON CHARACTER JUG TOWN CRIER D6920 number 1080 from a limited edition of 2500 signed by Michael Doulton 5 1/4" £30 - 50

295 - A ROYAL DOULTON TOBY "SIR JOHN FALSTAFFE" wearing a mottled red and blue cloak holding a jug and a mug of ale 8" high £30 - 50



Lot 297

- 296 - A ROYAL DOULTON FIGURE WARDROBE MISTRESS HN2145** designed by M Davies 5³/₄" issued from 1954 to 1967. *See illustration* £50 - 80
- 297 - A WADE MR WOLF AND THE THREE LITTLE PIGS JUG** the swelling jug moulded with two pigs playing with musical instruments within a tree lined floral landscape with a dwelling the handle model in the form of a wolf 10¹/₂". *See illustration* £100 - 150
- 298 - A CHARLOTTE READ, CROWN DUCAL, TUBE LINED CIRCULAR SHALLOW BOWL** the frieze tube lined with flowers and leaves in shades of orange, green and black with a vacant central round signed C Read 4491 printed Crown Ducal 12¹/₂" *See illustration* £100 - 150



Lot 298

- 299 - A ROYAL DOULTON FIGURE SWEET DREAMS HN2380** Style one designed by M Davies 5" issued from 1971 to 1990. *See illustration* £40 - 60
- 300 - A ROYAL DOULTON FIGURE LUNCHTIME HN2485** designed by M Nicoll 8" issued from 1973 to 1981 *See illustration* £40 - 60
- 301 - A ROYAL DOULTON FIGURE THE WAYFARER HN2362** designed by M Nicoll 5¹/₂" issued 1970 to 1976. *See illustration* £30 - 50

- 302 - A ROYAL DOULTON FIGURE THE BEGGAR HN562** style one designed by L Harradine 6¹/₂" issued 1921 to 1949 from the Beggars Opera series *See illustration* £80 - 120



Lot 299 Lot 302 Lot 301 Lot 296

- 303 - A PAIR OF CONTINENTAL PORCELAIN FIGURAL BOOK ENDS** each modelled as children in brightly coloured clothes 6" high, a Japanese Imari bowl chip to rim 7¹/₂", a Chinese prunus pattern ginger jar and a Staffordshire transfer printed bowl (five items) £30 - 50
- 304 - A COBRIDGE STONEWARE "AFRICAN SUNRISE" VASE**, designed by Angi Davenport, the mottled yellow and pink ground decorated with birds perched amongst trees impressed marks and signed M H 10" high boxed £100 - 150
- 305 - A GERMAN PORCELAIN TABLE LAMP, POSSIBLY PLAUE EARLY 20TH CENTURY** the circular flower leaf moulded base rising to a rose and leaf vase with three supporting cherubs cover similarly decorated with a spirally fluted column, the vase 10?" excluding brass fittings, complete with a cream and blue silk shade. *See illustration* £150 - 200
- 306 - A GERMAN PORCELAINEOUS LAMP, LATE 19TH EARLY 20TH CENTURY** the circular leaf moulded base with two winged cherubs (wings lacking and restored) supporting a two handled urn applied with flower heads and water lilies, with brass fitting and burner and a continental flower strewn two handled vase supported by winged cherubs, restored. £50 - 80



Lot 306



Lot 307 Lot 339

307 - A BORDER FINE ART "RED GROUSE" A1279 from the Game Birds series signed Willis 2001 raised upon a circular hardwood plinth 11" high.
See illustration £30 - 50

308 - A VICTORIAN PARIAN GROUP A GENTLEMAN AND HIS COMPANION MAKING MUSIC flanking a winged cherub raised under a glazed dome on an ebonised stand, 16".
See illustration £40 - 60



Lot 308

309 - A COLLECTION OF 19TH CENTURY TEA CUPS AND SAUCERS, including blue and white transfer decorated Hilditch and Son, Staffordshire cup and saucer decorated with oriental's in a garden, another decorated in the Japan pattern, a single cup Hilditch and Son, Machin tea bowl and eight cups and saucers decorated in the Japan pattern, two cups and two saucers not matching (26) £50 - 80

310 - A COLLECTION OF ENGLISH PORCELAIN CUPS generally Staffordshire mid 19th century and later each decorated in the Japan pattern, twenty cups, a matching cup and saucer and nineteen various saucers, two saucer dishes, three slop bowls, a Hilditch milk jug, matching saucer, two other milk jugs, a quantity some damaged £80 - 120

311 - A VIENNA WALL PLAQUE with a shaped gilt rim with green and red panels decorated in gilt with flowers and leaves with a central reserve painted with a seated maiden and three attendants blue shield mark 13 1/2" diameter. See illustration ***** £100 - 150



Lot 311

312 - A WEDGWOOD DYE KEN JOHN PEEL HUNTING JUG moulded in relief with scenes of the Chase with a hound handle, 7" high and a companion 5" (2) ***** £50 - 80

313 - A KEELING AND COMPANY LOSOL WARE TOILET SERVICE comprising a wash bowl basin and chamber pot each piece brightly decorated in the Nanking pattern in shades of red, yellow, blue, green, orange and purple (3) £60 - 100

314 - A VICTORIAN STAFFORDSHIRE POTTERY BULLS HEAD TONGUE DISH cover modelled as a bulls head naturalistically moulded with a conforming dish see illustration 8" high x 9 1/2" x 9 3/4" £150 - 200



Lot 314

315 - A ROYAL CROWN DERBY TRUMPET SHAPE VASE with a leaf moulded heavily gilt neck against a cobalt blue ground the swelling body decorated with blooms and leaves in polychrome shades of yellow, blue and red, a Cobalt and gilt lozenge band raised upon a circular leaf and flowerhead base, red printed marks, 17 3/4" See illustration £150 - 200



Lot 315

316 - A ROYAL DUX FIGURAL BASKET each figure standing either side of a basket raised upon a naturalistic base, triangle mark Royal Dux Bohemia, possibly restored 9" high x 11" £50 - 80

317 - AN AUSTRIAN AMPHORA BASKET applied with winged cherubs entwined with garlands of blooms, some restoration 12 1/2" £50 - 80

319 - A CLARICE CLIFF BIZARRE FANTASQUE JUG decorated with circles and trees in polychrome shades of yellow, purple, red, blue, black and green, black printed marks possibly restored 7" high £100 - 150

320 - A VICTORIAN MEASHAM BARGE WARE TEAPOT AND COVER the domed cover with a tea pot finial the body sprig decorated with birds, flowers and a motto Think of Me 13" See illustration £80 - 120

321 - A VICTORIAN MEASHAM BARGE WARE WATER JUG with a branch handle, sprig decorated with a vase of blooms and a motto Mrs Greenwood Marsh Grove February 1884 See illustration £50 - 80

323 - A BRANNAM VASE of baluster shape incised with a fish within a roundel against a blue ground impressed marks 8 1/4" £40 - 60



Lot 321 Lot 326 Lot 320

324 - A ROYAL DOULTON BUNNYKINS CHRISTENING MUG AND BOWL, a continental porcelain milk jug the baluster body painted with blooms and leaves against a cobalt blue ground, 4 1/2" and a Hammersley bone china rose pattern milk jug (4) £20 - 40

325 - A MEASHAM WARE TREACLE GLAZED TEAPOT AND COVER sprig decorated with flowers and a plaque Mrs Colwell 1884 9" £80 - 120

326 - A MEASHAM WARE TOBACCO JAR AND COVER the bell shaped top possibly restored, the jar sprig decorated with flowers with a plaque Fill your Pipe raised upon a circular base 6 1/2" See illustration £150 - 200

327 - A MEASHAM WARE TREACLE GLAZED TEA POT AND COVER sprig decorated with flowers and leaves and a plaque Love at Home 1886 7" high £80 - 120

329 - A ROYAL LANCASTRIAN FLUTED VASE the pale green and black ground insized with stylized lines, impressed Royal Lancastrian made in England, and signed EN, 7" See illustration £150 - 200



Lot 329

330 - A ROYAL DOULTON CHARACTER JUG "RIP VAN WINKLE" D6438 large, designed by G Blower, The Pied Piper D6403 large 7" issued 1954-1981, Don Quixote D6460 small 3 1/4" high issued 1957-1991 and Long John Silver D6386 small designed by Max Henk (4) £50 - 80

331 - TWO ROYAL DOULTON TOBY JUGS "WINSTON CHURCHILL", 8630 the seated gentleman smoking a cigar 9 1/4" (2) £40 - 60

332 - A CARLTON WARE ROUGE ROYALE PLATE with a shaped rim, gilt and floral border the centre painted with a pagoda with figures and trees in landscape, a Carlton Ware plate painted with Mallards in flight the border decorated with iris's and other pond plants, black printed marks 9", and a Carlton Ware Rouge Royale shaped two handled vase, gilt branch handles raised upon a shaped base with branch feet, black printed marks 13" See illustration £50 - 80



Lot 332

333 - TWO ROYAL DOULTON FIGURES, Bo Peep HN1811 designed by L Harradine 5" issued from 1937 to 1995, Wendy HN2109 issued 1953 to 1995 (2)

£40 - 60

334 - A ROYAL DOULTON FIGURE Bo Peep HN1811 and a companion Babie HN1679 designed by L Harradine 4 3/4" issued 1935 to 1992 (2)

£40 - 60

335 - A ROYAL DOULTON FIGURE Bridesmaid M30 style 2 designed by L Harradine 3 3/4" issued from 1932 to 1945

£50 - 80

336 - A ROYAL DOULTON FIGURE Chloe M9 style 2 designed by L Harradine 2 3/4" issued 1932 to 1945

£50 - 80

337 - A ROYAL DOULTON FIGURE June M65 style 2 designed by L Harradine 4 1/4" issued 1935 to 1949 and a Victorian Lady M1 style 2 3 3/4" issued 1932 to 1945 restored

£40 - 60

338 - A POOLE POTTERY SAUCER DISH the green ground decorated with stylised leaves in shades of green, red, yellow and black, black printed mark, Poole Dolphin, England, initials PS, 10 1/2"

£40 - 60

339 - A ROYAL DUX MODEL OF A CAPERCAILLIE RESTING ON A BRANCH, pink seal mark, 7 1/2". See illustration

£30 - 50

340 - A ROYAL DOULTON PERSIAN PATTERN JARDINIERE D3350, transfer printed in polychrome shades with parrots, flowers and leaves 9", a pair of Victorian relief moulded flow blue baluster jugs each moulded with Spring blooms 8 1/2", a Doulton Willow pattern bowl 9", a Copeland Spode Italian pattern bowl, a Victorian flow blue leaf decorated toilet bowl. (6)

£40 - 60

341 - A STAFFORDSHIRE BLUE AND WHITE TRANSFER DECORATED TUREEN AND COVER

the domed top with a lion finial decorated with pagodas, landscape, figures and birds in flight, 9" x 12 1/2" and a similar smaller tureen and cover 8"

£50 - 80

342 - A DAVENPORT JAPAN PATTERN TWO HANDED PLATE decorated with stylized flowers and leaves in shades of blue, red, green with a red printed mark, Coronet Davenport, Longport, Staffordshire and impressed 10", a pair of Davenport blue and white transfer printed plates each decorated with pagodas, figures boating in landscape, impressed Davenport 9 1/2", a similar soup bowl and a tureen base 9 3/4"

£80 - 120

343 - A STAFFORDSHIRE BURLEIGH WARE SANDHURST TRANSFER DECORATED AND PAINTED TWO HANDED JARDINIERE

decorated with flowers and leaves 9" high £20 - 40

344 - A LATE 18TH CENTURY EARLY 19TH CENTURY STAFFORDSHIRE PEARL WARE TOBY JUG modelled in the form of a squire with a black tricorne hat holding a brimming jug of ale, brown frock coat, green waistcoat and yellow britches, green mound base, 11" high. See illustration

£120 - 180



Lot 344

345 - AN AYNSLEY WESTMINSTER ABBEY COMMEMORATIVE DISH FOR HM QUEEN ELIZABETH II AND PRINCE PHILIP, another

England kings and queens, and a similar dish, a Derby type two handled Japan pattern tureen, a Victorian Staffordshire Japan pattern mug cracked, a Staffordshire Earthenware mug decorated inside with flowers and leaves 3 1/2" and a copper Lustre jug (7)

£20 - 40

346 - AN ITALIAN CANTIGALI BALUSTER VASE with four leaf handles decorated in polychrome shades of blue, yellow and green with flowers and leaves, blue mark 4" and a Sienna lamp (2)

£20 - 40

347 - A STAFFORDSHIRE EARTHENWARE VASE, THOMAS FIELDING & SON the shoulders tapering to the base painted with cattle in a tree line landscape 9 1/2"

£50 - 80



Lot 349



Lot 350

348 - A LATE 18TH EARLY 19TH CENTURY YORKSHIRE TYPE TOBY JUG the gentleman seated, wearing a black tricorne hat, brown frock coat, green breeches holding a brimming jug of ale on a pink mottled canted base, some restoration 9 1/2" £150 - 200

349 - A PAIR OF DOULTON SLATERS PATENT STONEWARE VASES each with trumpet shaped necks, the shoulders tapering to the base. the parchment ground with raised decoration of flowers and leaves in shades of blue and gilt raised upon a circular foot impressed marks and signed F M 13 3/4" See illustration £100 - 150

350 - A WORCESTER EARTHENWARE PLAQUE Cock and Hen signed James Bradley impressed marks 14 1/4" diameter. See illustration £300 - 400

ORIENTAL CERAMICS

351 - A LARGE IMARI VASE MEIJI PERIOD £120 - £180

352 - A JAPANESE EBONISED JAPPANED AND IVORY TWO FOLD SCREEN leaf carved border, the central panels applied with ivory depicting birds, insects and flowering plants 61" x 43" £50-80

353 - A JAPANESE KUTANI TEA CANISTER of hexagonal form with a cylindrical cover decorated with panels depicting birds and blossom against an orange foliate ground, character marks 5 1/2" high £80 - 150



Lot 355 pair Lot 378

354 - A CHINESE BLUE AND WHITE DECORATED JUG AND COVER the domed cover applied with a figure of a dog entwined handle the body decorated with pagodas in landscapes and fishing vessels 7" high. See illustration £100 - 150

355 - A PAIR OF CHINESE FAMILLE VERTE VASES each of cylindrical shape with foliate borders above panels painted with dignitaries, and attendants against a flower strewn ground, 10 1/4" high See illustration £100 - 150

356 - A JAPANESE BRONZE OF A WATER BUFFALO unsigned 2 1/2" high x 5" £20 - 40

357 - A JAPANESE LACQUERED BRONZE AND SILVERED VASE with a frieze decorated with a crane in flight, stylised clouds against a mottled black and red ground, signed, and base with a seal mark, 13" high. See illustration £400 - 600



Lot 357

358 - A JAPANESE LACQUERED TABLE TOP the lacquered ground painted with fan shape panel each decorated with pagodas Mount Fuji in landscape others with pagodas, dwellings and birds in flight 23 1/2" diameter. See illustration £50 - 80

359 - A JAPANESE PAPIER MACHE WALL PLAQUE inlaid with a cockeral and a hen, damaged and requires restoration 19" diameter and a Japanese panel inset with ivory depicting an iris signed within a roundel 17 3/4" x 12 1/2" £50 - 80

360 - A PAIR OF JAPANESE CLOISSONNE VASES each with everted rims, the shoulders tapering to the base, the red ground decorated with flowering plants and birds 12 1/2" See illustration £100 - 150



Lot 358



Lot 360

361 - A JAPANESE IMARI VASE AND COVER the bell shaped cover decorated with stylized leaves in red and green, the shoulders tapering to the base painted with carp and other fish amidst a flower strewn ground in shades of cobalt blue, green and red. *See illustration*
***** £300 - 400



Lot 361

362 - A CHINESE SHAPED OVAL BOWL WITH A WAVED RIM above a key border the centre with a yellow ground decorated with prunus and other flowers in shades of red, blue and green, the rim decorated with flowers and leaves raised upon an oval foot 16 1/2" x 13" 3 1/2" high. *See illustration*
£200 - 300



Lot 362

363 - A NEAR PAIR OF JAPANESE IMARI VASES MELJI PERIOD LATE 19TH CENTURY each with inverted rims the shoulders tapering to the base, each decorated with roundels painted with birds, panels enclosing flowering branches and overall decorated with flowers heads in shades of blue and red 12" high, one with chips to rim. *See illustration.* £100 - 150



Lot 363

364 - A JAPANESE STONEWARE VASE of gourd shape decorated with raised decoration blue and white depicting warriors holding swords and masks, 13 1/2" impressed with a seal mark. *See illustration* £80 - 120



Lot 364

Lot 354

365 - A JAPANESE BROWN STONEWARE JARDINIERE AND PEDESTAL the jardiniere, with shoulders tapering to the base decorated in relief with a scaly dragon and clouds raised upon a vase shape pedestal similarly decorated in relief with dragons raised upon a circular foot, 31" high. £50 - 80

366 - A PAIR OF LATE 19TH CENTURY SATSUMA VASES MELJI PERIOD each with trumpet shape necks the shoulders tapering to the base with raised decoration depicting chrysanthemums and other blooms, birds in flight in shades of red, white, yellow, blue against a cream ground, 25" *See illustration* £200 - 300



Lot 366

367 - A CHINESE 19TH CENTURY HUA-LI WOOD AND ROUGE MARBLE URN STAND the beaded top carved with leaves, flowers and objects enclosing an octagonal rouge marble panel of a fruit and leaf frieze raised upon four carved supports joined by a shelf, 32"x17" £150 - 200



Lot 367

Lot 368

368 - A CHINESE 19TH CENTURY HUA-LI WOOD AND ROUGE MARBLE URN STAND with a 15" diameter top, leaf carved border above a frieze of leaves and flowers raised upon four leaf carved legs joined by a foliate shelf 24" high £150 - 200



Lot 369

369 - A GOOD LARGE JAPANESE IMARI WALL PLAQUE MEIJI PERIOD late 19th century the broad cobalt blue rim decorated with reserve panels, brightly coloured ducks swimming amidst plants the border with flower heads and Irises the central well decorated with maidens taking tea in a landscape with Mount Fuji, decorated in shades of blue, red, green and orange, 20 1/2" See illustration £200 - 300



Lot 370 (a set of seven)

370 - SEVEN JAPANESE IMARI WALL PLAQUES MEIJI PERIOD LATE 19TH CENTURY each decorated with fan shape and other panels depicting baskets of blooms, butterflies, and water fowl 12" diameter. See illustration £200 - 300



Lot 371

371 - A PAIR OF JAPANESE VASES LATE 19TH CENTURY each with pierced oval rims the shoulders fluted tapering to the base decorated in blue and white with Cranes amongst flowering plants, one restored 9" high. See illustration £80 - 120



Lot 372

Lot 373

Lot 374

372 - A JAPANESE TWO HANDLED KORO AND COVER the slightly domed pierced cover applied with a dog of Fo, the globular body decorated with Samurai and dignitaries amidst a landscape raised upon three mask supports, 13 1/2" *See illustration* £120 - 180

373 - A JAPANESE SATSUMA VASE AND COVER the restored cover applied with a dog of Fo the quatrefoil body with shoulders tapering to the base decorated with fan shape panels enclosing butterflies and precious objects raised upon four shaped feet, signed, 5 1/2" *See illustration* £80 - 120

374 - A PAIR OF JAPANESE SATSUMA TRUMPET SHAPE VASES each with gilt lozenge rims, the neck decorated with chrysanthemums and leaves the globular body decorated with panels of dignitaries and ladies Mount Fuji in landscape, one restored rim, 10" *See illustration* £80 - 150



Lot 375

375 - A VICTORIAN STAFFORDSHIRE JAPAN PATTERN PUNCH BOWL with a shaped gilt rim the central well decorated with flowering plants and leaves the exterior similarly decorated, 6" high x 14" *See illustration* £80 - 120

376 - A JAPANESE WOOD CARVING OF A FISHERMAN AND CHILD ATTENDANT he holding a fluted vase and fish raised upon a leaf and carved base 10" £50 - 80

377 - A CARVED WOOD FIGURE OF AN ORIENTAL RECLINING WITH A MYTHICAL FROG ON HIS LEG raised upon a shaped wooden plinth 9" high and a companion, a pair (2) £100 - 150

378 - A JAPANESE VASE the shoulders tapering to the base, decorated with flowering plants 9 1/2" £100 - 150

COLLECTORS ITEMS

379 - THREE DECORATIVE EDWARDIAN LEADED AND COLOURED STAINED GLASS WINDOWS each hand painted with a central glass diamond shape panel depicting birds perched in branches, a similar panel with doves nesting, and a 3rd depicting a thrush perched amongst fruiting branches each enclosed by coloured glass leaded panels with roundels and arches, two framed, approx size 24"x24" **Provenance originally removed from the Lord Hill Hotel, Whitchurch. *See illustration* £100 - 150



Lot 379

380 - DECORATIVE EDWARDIAN LEADED AND STAINED GLASS WINDOW, hand painted the central lozenge depicting birds nesting, unframed example the largest 23 1/2"x28" *See illustration* £100 - 150



Lot 380

381 - THREE DECORATIVE EDWARDIAN LEADED AND COLOURED STAINED GLASS WINDOWS each hand painted depicting birds perched amongst flowering plants with butterflies, two of bowfront outline largest 30"x23 1/2" *See illustration* £100 - 150



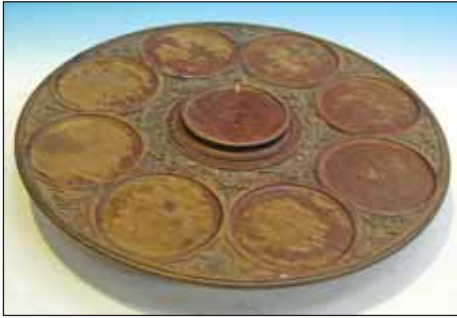
Lot 381

382 - AN L M ERICSSON AND CO PATENT WALL MOUNTED TWIN BELL TELEPHONE number 518052 the receiver with Bakelite handle and ear pieces 17" £200-300

383 - A DRESSING TABLE CHEVAL SET each work with tating with eight foliate roundels with pierced centres (3) £20 - 40

384 - SPARE LOT

385 - A VICTORIAN PARAFFIN LAMP with a black treacle glaze circular base stepped brass and fluted brass column with a ruby glass reservoir 16 1/2" £40 - 60



Lot 388

386 - A BLACK FOREST RECUMBENT BEAR INK STAND naturistically moulded 3 1/2" £40 - 60

388 - A VICTORIAN MAHOGANY REVOLVING LAZY SUSAN with a central roundel enclosed by eight roundels overall carved with leaves and flowers raised upon a circular plinth base and bun feet, 24"

See illustration £80 - 150

389 - AN ARMY TUNIC, CAPS, VARIOUS BELTS and a collection of medals, bayonet, cane, tie qty.

£80 - 120

390 - A VIOLIN 20TH CENTURY with a facsimile Stradivarius label 23" overall the body 14 1/2" £30 - 50

391 - A VICTORIAN BRASS CORINTHIAN COLUMN TABLE LAMP the stepped base rising to a fluted column with an opaque spirally fluted ruby tinted reservoir, brass fitting and tulip shaped funnel 22"

See illustration £40 - 60

392 - THE KROPP CASED SET OF HOLLOW GROUND RAZORS the oak box enclosing six cut throat razors with ivorine bodies and another with a black body, a cased Rolls razor Imperial number 2 in original cardboard holder, a Rolls razor strip dressing

£20 - 40

393 - A DEACTIVATED .303 LEE ENFIELD NO 4 RIFLE bolt action stamped GR with folding sight and magazine, 44" long stamped No: 3117. £50 - 80

394 - A PAIR OF LEATHER LACE UP SKATING BOOTS first half of the 20th century impressed 7788.10.3.9 another black pair and a pair of brown leather boot skates in a canvas. £20 - 40

396 - RAILWAY INTEREST A RAILWAY GUARDS BELL LATE 19TH CENTURY with a turned mahogany handle with clapper by repute from Gresty Signal Box, Crewe, 15" high £80 - 150



Lot 396

397 - A VICTORIAN AND MAHOGANY UPHOLSTERED FOOT STOOL the rectangular padded top decorated with blooms with a moulded border and compressed bun feet, 7"x14" £30 - 50



Lot 400 Lot 401 Lot 402 Lot 396

398 - AN EARLY 19TH CENTURY NEEDLEWORK SAMPLER the work of Dinah Binns 1842 worked with a memorial and a eight line verse the border with flowering plants within an oak frame 15 3/4" x 13" *** the back handwritten Ann Binns believed to be Anne Platt mother of Dinah Binns second wife of Joseph Robinson, Church House, Bradfield Green, Middlewich and related to Anne Hollinshead, Brook House, Minshull Vernon £60 - 120

400 - A BRITISH RAIL BLACK PAINTED TIN GUARDS LAMP with overhead and side handles, hinged cover oval red and blue brass filters, spring side and two others (3) See illustration £100 - 150



Lot 401

401 - GREAT WESTERN RAILWAY A CAST IRON RECTANGULAR PLAQUE "NO ADMISSION EXCEPT ON BUSINESS BY ORDER" 9" x 14 1/2" See illustration £100 - 150

402 - A RAILWAY LAMP WITH OVERHEAD HANDLE the tin body with an oval label stamped railway 11" high See illustration £40 - 60



Lot 403



Lot 406

403 - 25 SINGLE MOULDING PLANES from mixed manufacturers, size of each approximately 9 1/2" x 1" and 2" makers marks include G Francis Folkestone, W J Walker, York, Mutter most marked with previous user name stamps (25) £40 - 60

404 - A VINTAGE WOODEN COMPASS PLANE 9 1/4" x 1 1/2" previous user stamp and a collection of twenty moulding planes some beads including John Moseley and Son, Broad Street, London (3) W H Marples, Sheffield A Mathieson and Sons, Glasgow most marked with previous user stamps (21) £40 - 60

405 - A COLLECTION OF EIGHT MOULDING PLANES from mixed manufacturers including W H Marples and Son, Sheffield, Charles Francis, Folkestone previous name stamps 9 1/2" x 3 1/2" and five moulding planes with bull noses (rounded bases) including G Eastwood York, Varville and Sons Ebor Works, York, a badger plane with a printed label for Matthison and stamped A Matthison and Son, Glasgow 22" x 3"m and two toothing planes (16) £40 - 60

406 - A PLOUGH PLANE the beechwood body with a steel skate brass inlays 9" previous owner stamps, a similar plough plane, moulding plane with a steel skate, two dado planes one marked Booth, 35 Golden Lane, Dublin another John Moseley, London 9 1/2" x 3 1/2", another J Dobie Argyll Street, a moulding plane stamped Mitchell, Newtonington Causeway London with a brass skate and two others (9) £40 - 60

407 - A. MATHIESON AND SON GLASGOW MOVING FILLISTER with brass fittings turning screw previous owner name stamps 9 1/2" x 3 3/4", beechwood and brass router with steel blade, brass fitting and brass turning screw 7 1/2" x 4" and a brass and ebony marking gauge stamped Taylor 6 1/2" (3) together with a Matthison blade and other incomplete tools, quantity. £40 - 60



Lot 407

408 - A STANLEY RULE AND LEVEL COMPANY PLANE steel and brass, number 113 10 1/4" x 5 3/4" £40 - 60

409 - A RECORD NUMBER 778 PLANE steel, blued 9 1/2" x 5 1/4" and a Record plane number 042, steel body 8" (2) £40 - 60

410 - A STANLEY PLOUGH PLANE NUMBER 46 steel blued body with rosewood shaped handle and knob 11 1/2" x 8 1/2" £40 - 60

411 - A RECORD 050C STEEL AND COMPOSITION PLOUGH PLANE with extra blades 10" and a Chamberlain two handled router number 6, two handled router a Spoke Shave and a narrow brass moulding plane stamped J.AUBURN 4 1/4" x 1 1/2" £30 - 50

412 - AN EARLY 20TH CENTURY CASED BRASS COATED PANTOGRAPH signed Stanley, London with accessories within a walnut fitted case 39 1/2" x 7" and a Chesterman steel rule stamped 1917 within a fitted case £80 - 120

414 - 23 MOULDING PLANES INCLUDING BEADS mixed manufacturers 9 1/2" x 3 1/2" including A Mathieson and Son Glasgow (2) C Nurse and Company Walworth Road, London all with previous owners stamps, a brass and ebony gauge, two badger planes stamped R C Gregory 16 1/2" x 3" and four sharpening stones in boxes and a Stanley Bailey number 4 plane 9" and a smaller Stanley example 7" £30 - 50

415 - FIVE 19TH CENTURY FRAMED NEEDLEWORK SAMPLERS, the work of the Taylor family, Eleanor aged 11 1852 worked with number and alphabet trials, flowers and plants, framed 11" x 11 1/2", Agnes Taylor Kendal aged 11 1855 16 1/2" x 13 1/2", Ada Louisa Taylor Kendal 11 1861 12" x 17", Helena Taylor Kendal aged 11 1864 framed 12" x 14" a fifth Eleanor Atkinson aged 9 9 1/2" x 11 1/2" and a Victorian needlework piece, The Faithful Hound framed 9 1/2" x 7 1/2" £80 - 120

416 - A VICTORIAN GUN METAL AND MAHOGANY HANDLED BELL complete with clapper, 12" high. £40 - 60

417 - A MURPHY TYPE A72 RADIO, AC MAINS RECEIVER upright walnut veneered case with a rectangular aperture, long, medium and short waves, central roundel speaker and four Bakelite knobs with a manual and guarantee £20 - 40

418 - AN LMS GUARDS LAMP with an overhead loop handle, black painted tin, stamped LMS 12" high £50 - 80

419 - A BRITISH RAIL LAMP "The Adlake Non Sweating Lamp" stamped BR/M within an oval, the cast iron body with a hinged cover, clear glass lamp with a brass plaque Adlake number 55 Lamp Manufacturing Railway Supplies 10" high £40 - 60

420 - A WILLIAM IV MAHOGANY SEWING BOX the rectangular hinged cover inlaid with ebony stringing enclosing a divided interior for cottons above a frieze drawer raised upon compressed bun feet, 4 1/2" 9" x 7" £80 - 120



Lot 422

Lot 423

421 - A VICTORIAN WOOLWORK TAPESTRY DEPICTING A GENTLEMAN WITH A HORSE AND HOUND within a rosewood frame, 5"x6¹/₄", another depicting a farmer with a cow, rosewood frame. After H Alken A coloured sporting print in cover, framed and another The Chase (4) £40 - 60

422 - A VICTORIAN TORTOISESHELL BOX of upright rectangular form with a hinged cover the side of slightly bow front outline, 5¹/₄"x2¹/₄"

See illustration £100 - 150

423 - A TORTOISESHELL AND WHITE METAL BOX of shaped rectangular form the centre applied with a white metal leafy frieze with an oval, initialled enclosed by a wire work frieze, 3"x2"

See illustration £150 - 200

424 - A MAHOGANY CASED VICTORIAN BRASS AND EBONY CATTLE SYRINGE by Arnold and Sons, West Smithfield, London in a blue velvet lined hinged mahogany box, the syringe 15" attachment and three additional handles, the case measures 3" high x 18³/₄" x 8" £50 - 80

425 - SPARE LOT

427 - A VICTORIAN ROSEWOOD VENEERED EBONISED MUSICAL BOX with a 6" cylinder bells in sight with butterfly strikers the comb with three teeth missing playing eight airs, 9"x19"x11¹/₂" £150 - 200

428 - A VICTORIAN ROSEWOOD AND TUNBRIDGE WARE INLAID BOX the rectangular hinged top with a panel inlaid with flowers 1¹/₂"x5¹/₂"x3¹/₂" £80 - 120

429 - A VICTORIAN CYLINDER MUSICAL BOX with a 3¹/₂" cylinder playing six airs, five teeth broken within a simulated rosewood case decorated with a lozenge 5" x 14³/₄" x 6¹/₂" £100 - 150

430 - A CHIPPENDALE STYLE WALNUT WALL MIRROR with a gilt frame, shaped pediment ears and apron, 25¹/₂" high. £40 - 60



Lot 432

431 - A VICTORIAN AND BUR WALNUT TUNBRIDGE WARE INLAID WRITING BOX with strap work inlay enclosing a red velvet writing surface, two ink bottles with gilt metal foliate mounts and a pen tray, 6¹/₂"x17³/₄"x9³/₄" £80 - 120

432 - A PERCUSSION FOWLING PIECE with a mahogany lock and stock Damascus barrel with ramrod 45¹/₂" £80 - 150

433 - A POND YACHT, EARLY 20TH CENTURY



Lot 433

"Annie Y" twin masted vessel, plain deck, painted body with rudder 39" long. See illustration £100 - 150

434 - A PAIR OF VICTORIAN NEEDLEWORK KETTLE STANDS each of quatrefoil form the centres with Berlin work panels with coloured beads raised upon ceramic feet 7" See illustration £80 - 120



Lot 434

Lot 762

436 - A SIENNA ANTICO AND GILT METAL MOUNTED TABLE LAMP with a square plinth rising to a leaf mounted support the marble body applied with garlands of flowers, rams mask handles 21" restored.

£80 - 150



Lot 437 Lot 444 Lot 391

437 - A VICTORIAN RUBY AND WHITE ENAMEL PARAFFIN LAMP with a circular black treacle glaze base the brass and fluted bell shape support rising to a ruby tinted and white enamel swirling reservoir, 25 1/2" See illustration £50 - 80

438 - A VICTORIAN MAHOGANY BOOT JACK with turned handles, the uprights similarly turned with a shaped boot holder 30 1/2". See illustration £80 - 120



Lot 438

439 - A GEORGE III STYLE INLAID WALL MIRROR with a shaped cresting inlaid with a satinwood open fan, shaped ears and apron, similarly inlaid 26" x 16" with a bevelled mirror. £40 - 60

440 - A STUDENTS CASED BRASS COATED MONOCULAR MICROSCOPE raised on a V shape stand the rectangular platform with angled lens 9 1/2" with an outer case. £40 - 60

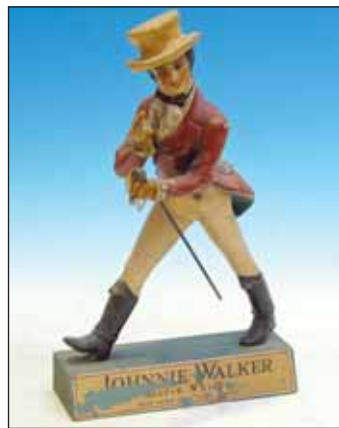


Lot 442

441 - A GEORGE III STYLE YEW WOOD SHELF with a swan neck cresting centred with Prince of Wales feathers above four serpentine shelves joined by turned spindels, 34" high. £80 - 120

442 - OF MARINE INTEREST A VICTORIAN MAHOGANY OCCASIONAL TABLE the rectangular top inlaid with a masted steamer raised upon a baluster shaft and down swept legs 27 1/2" x 28" x 18" See illustration £80 - 150

444 - A VICTORIAN RUBY TINTED PARAFFIN LAMP AND SHADE the circular treacle glazed base with a fluted brass column, ruby reservoir with a ruby tinted and acid etched flower and leaf decorated shade with a clear glass funnel see illustration 25" high ***** £150 - 200



Lot 445

445 - A JOHNNY WALKER SCOTCH WHISKY ADVERTISING FIGURE, the gentleman wearing a top hat and holding a walking stick, astride a rectangular plinth with a gilt and black label, 15 1/2" x 9 1/4" See illustration ***** £80 - 150

446 - A VICTORIAN GILT BRONZE INKWELL of rectangular form with a hinged compartment decorated with leaves flanked by two hinged inkwells each with gilt and ceramic liners raised upon a platform base with outset figural mask supports 4" high x 12" x 5" See illustration ***** £150 - 200

447 - A PAIR OF PATINATED SPELTER FIGURES Pecheur Holding a Basket of Fish and a companion each raised on naturalistically rocky bases and patinated circular plinths 21 1/2" ***** £50 - 80



Lot 446

448 - A VICTORIAN OAK AND EBONISED HANGING MAGAZINE HOLDER the shaped scrolling top above a roundel centred with a mask above a hinged fall front with a needlework tapestry depicting a hound, ***** £50 - 80

449 - BRITISH NAVAL OFFICERS SWORD fluted ivory or bone handle with an oval, coronet and anchor brass handle with a leather and brass mounted scabbard inscribed Richard Teed Strand, 39 1/2" £150 - 200



Lot 450

450 - A FRENCH 18TH CENTURY CAROBONEERS BREAST PLATE steel and brass embellished and a back plate with brass studs, the breast plate 18", the back plate 16" £300 - 400

451 - A LATE 19TH CENTURY EARLY 20TH CENTURY OAK TANTALUS, the cabinet by Mappin and Webb with three mallet shaped decanters within an oak sliding frame, metal mounts raised upon a plinth base see illustration 12 1/2" x 14 1/4" £50 - 80



Lot 451

452 - A 19TH CENTURY GILT METAL INK STAND the circular tray with a vase shaped hinged inkwell supported on a circular base applied with three figures one blowing a horn the others with hammers raised upon a circular base 6" high £80 - 150

453 - AN UNUSUAL BRASS AND PLATED DINNER GONG the rectangular oak plinth with a turned frame with acorn finial's and a pendant gong and beater 17"x14"x10" £80 - 120

454 - BRITIAN'S HISTORICAL SERIES "THE STATE COACH", No: 1470, the coach gilt metal, two seated figures, five attendants and guards riding horseback and four rider less horses in the original box. £50 - 80



Lot 455

455 - THE LONDON BABY COACH the boat shape body with suspension and jewel wire wheels, solid tyres, blue and white body with a later associated canopy, 54"x40" See illustration £50 - 80

456 - A TUNBRIDGE WARE PAPER KNIFE shaped in the form of a ladies shoe 7 1/2" £80 - 120

457 - A BARGE WARE DECORATED TWO HANDED MILK CHURN AND LID stamped Woolner Bros Ltd., Walsall, 10 gallons the blue ground decorated with a panel depicting a dwelling, roses and other flowers 30" £80 - 120

458 - A BARGE WARE DECORATED WATER CARRIER, 11 1/2" high £50 - 80

459 - A VICTORIAN AND LATER BRASS PARAFFIN LAMP with a circular base, fluted column blue glass reservoir and an opaque glass later shade, 27 1/2" £40 - 60

462 - A RECORD NO: 2506 CROSS FORM PLANE 4 1/4"x2 1/4", and four other miniature planes (5) £20 - 40

463 - A SET OF FOUR VICTORIAN COACH OR TRAP HORSE BLINKER BADGES initialled, each 1 1/4" and two other blinkers in the form of horses heads (6) £40 - 60

464 - A TIN PLATE WILLS WOODBINE DOMINOES BOX complete with dominoes cased, Wills Gold Plate cigarette cards, two packs of patience cards boxed, the Queens Silver Jubilee playing cards unopened and two others (6 items) £20 - 40

465 - A 1983 ROSS BUTLER HOLSTEIN CANADA TRUE TYPE MODEL OF A BULL painted composition stand raised on oval green mound base impressed Holstein Canada and impressed 1983 Ross Butler 14" x 20 1/2" *Ross Butler 1907-1995 commissioned by Ontario Government in 1930's to paint true types of livestock for educational purposes. See illustration £100 - 150



Lot 465

Lot 466

466 - A 1983 ROSS BUTLER HOLSTEIN CANADA TRUE TYPE MODEL OF A COW painted composition stand raised on an oval green mound base impressed Holstein Canada and impressed 1983 Ross Butler see illustration 13" x 19 1/2" £100 - 150



Lot 467

467 - "THE EDINBURGH STEREOSCOPIC ATLAS OF ANATOMY", Waterston and Burnet new edition five cased hessian backed cases enclosing plates, sections one, one to five and the T C and E C Jack, Edinburgh hand held card viewer. See illustration £200 - 300

468 - A CASE OF 24 PARTAGAS CIGARS WITH A CIGAR HOLDER. £10 - 20

469 - A HEREDITIES FACIATED BRONZE MODEL, "THE OUTSIDER" on an oval hardwood plinth, 10" £30 - 50

470 - THREE TIFFANY STYLE STAINED GLASS AND LEADED HANGING LIGHT SHADES each one decorated with leaves enclosing coloured green glass, white marbled ground 16" diameter (3) £150 - 200

471 - A COLLECTION OF PIANOLA ROLLS, INCLUDING 875 "GET OUT AND GET UNDER THE MOON, FOX TROT, MID SUMMER NIGHTS DREAM, MOCKING BIRD HILL", approx 44 £40 - 60

472 - FOUR EMPIRE BLUE VELVET PLUSH SAILOR DOLLS, each with hats, Uganda, Empress of Canada, a similar inscription and another each with goggle eyes and other expressions, 9" the smallest 8 1/4", and a miniature Armand Marseille bisque dolls head with open mouth and sleeping eyes, impressed A12/0, 1 3/4" £40 - 60



Lot 474

473 - A NEAR PAIR OF LATE 18TH EARLY 19TH CENTURY WOODEN SHOE SNUFF BOXES each with pierced fronts lacking hinged covers, 3?", a Boer War Talana Belfas BD Smith, Liangsner pipe, a Queen Victoria South Africa 1900 "I wish you a happy New Year" tin tin gift tin and a daguerreotype photograph contained within an ornate hinged outer case decorated with figures within an oval 3 3/4"x3 1/2" £40 - 60

474 - A VICTORIAN BLACK VELVET PIERCED AND EMBROIDERED LADIES CLOAK with a black lace trimmed collar the body pierced and decorated with leaves and tulips See illustration £100 - 150



Lot 475

475 - A SILK AND LACE TRIMMED JACKET, a similar jacket and a skirt. See illustration £100 - 150

476 - A GENTLEMAN'S SILK TOP HAT, and two ladies parasols £40 - 60

477 - A LATE 19TH CENTURY WOOLWORK SAMPLER, THE WORK OF MARGARET ALICE RUTTER, AGE 12 1886, UTKINTON SCHOOL worked with birds perched on branches a seated hound, butterflies, roses, figures enclosed with strawberry pattern borders 16 1/2"x21 1/2" See illustration £300 - 400



Lot 477

479 - A PAIR OF VICTORIAN WALNUT TAPESTRY FOOT STOOLS each with 13" diameter floral tapestry covers with shaped aprons raised upon four cabriole legs carved with flowers. See illustration £100 - 150



Lot 479

- 480 - AN AFTERNOON TEA TABLE CLOTH** raised foliate decoration the borders with crochet work approximately 41"x40" and three afternoon tea cloths with crochet work borders and a small needlework tray cloth with pierced foliate angles (5) £40 - 60
- 481 - TWO BLUE AND WHITE TEA TABLECLOTHS AND A LINEN TABLECLOTH** pierced with flowers. £20 - 40
- 482 - A LARGE LINEN TABLECLOTH WORKED WITH COLOURED WOOLS WITH FLOWERS AND LEAVES** 60"x60" £20 - 40
- 483 - A LARGE DAMASK LINEN DINING ROOM TABLECLOTH** decorated with foliate border, 136"x68" £20 - 40
- 484 - A LARGE DAMASK LINEN TABLECLOTH** foliate decorated, 122"x84" £40 - 60
- 485 - A DAMASK TABLECLOTH** pierced and worked in relief with flowers and leaves, 80"x96" £40 - 60
- 486 - A CABINETTA W AND S TRADEMARK FOLDING BED** within a beechwood frame £20 - 40



Lot 487

- 487 - A VICTORIAN BLACK FOREST CARVED PANEL** depicting two St Bernard dogs in a mountainous landscape rescuing a gentleman with a monastery in the distance tree lined and with an inscription in German celebrating a dog called Bary who worked tirelessly for twelve years and during that period saved the lives of forty people see illustration 15³/₄" x 22" excluding frame £100 - 150
- 488 - A VICTORIAN CARVED OAK WALL SHELF** with an egg and dart border with a mask leaf and ribbon tied support 21" high £40 - 60

489 - A VICTORIAN GAMES BOX the cover inlaid with rosewood and boxwood for chess and draughts the divided interior enclosing an ivory chess set, natural and red stained pieces, a boxwood chess set with opposing ebonised pieces and an ivory and red stained draughts set, a pair of ivory and stained dice vases, two dice, three packs of cards the outer box measures 4"x14"x14" £150 - 200

490 - A VICTORIAN SCRAP SCREEN decorated with beauties, pets, animals and contemporary paintings some damage, each panel 64" x 30" £50 - 100

491 - A GILT BRONZE FOUR BRANCH CHANDELIER the pear shape downswept branches with griffin and foliate mounts with four outset branches, 30" high. £200 - 300

TOYS

- 492 - A VICTORIAN GERMAN "THE SPEAKING PICTURE BOOK"**, a new picture book with characters in voices, the red transfer decorated cover with four lithograph plates including key, lamb, birds, cow, cuckoo, goat, mamma and papa with nine full strings producing sounds 2¹/₄" x 9¹/₂" x 12¹/₂" and a Christmas decoration of an elf £30 - 50
- 493 - A DOLLS HOUSE MID 20TH CENTURY** the gabled dwelling with a first floor gallery, a hinged front and a small collection of furniture. £40 - 60



Lot 494

- 494 - AN AMERICAN CAST IRON BULLDOG BANK** patent April 27th 1880 the seated bulldog with opening mouth painted in shades of brown and grey raised upon a plinth base lacking coin trap 7" See illustration £150 - 200
- 495 - A LATE 19TH CENTURY AMERICAN CAST IRON BANK "ALWAYS DID SPIES A MULE"** the mule when the button is pressed spins round and kicks his attendant depositing a coin in the base, original paintwork, lacking coin trap 6" x 9¹/₂" See illustration £150 - 200
- 496 - A LATE 19TH CENTURY CAST IRON AMERICAN FROG BANK** with a large bullfrog when a lever is depressed a smaller frog flicks a penny into the opening mouth, lacking coin trap 4¹/₂" x 9" See illustration £150 - 200



Lot 495

497 - A LATE 19TH CENTURY DARK TOWN BATTERY CAST IRON MONEY BANK with an articulated player from the possums holding a baseball bat, when the lever is depressed he raises his bat and a seated figure nods his head, the other figure lacking bowling arm raised upon a plinth base 7 1/2" x 10"
*See illustration ****** £200 - 300



Lot 496

498 - A LEHMANN CLOCKWORK TIN PLATE NAUGHTY NEPHEW CARRIAGE with driver and child wearing a blue sailor suit, the carriage with a blue and cream ground printed marks Lehmann.s patented USA May 12th 1903 see illustration 4 1/2" high x 4 1/2"
 ***** £150 - 200



Lot 497

499 - A COLLECTION OF BRITAINS FARMYARD ANIMALS AND FIGURES including farmers, cattle, horses, poultry and fences, and railway shut off steam and a Bovril sign, *See illustration* £40 - 60



Lot 498

500 - MECCANNO A LARGE QUANTITY PLAY WORN including panels, wheels, sprockets, nuts and bolts, large quantity £40 - 60



Lot 499

501 - MUFFIN JUNIOR original box, the painted metal articulated mule painted in cream red and black with original cardboard box. £80 - 120

502 - THE SATURN SCOPE, A BINOCULAR HAND HELD STEREOSCOPIC VIEWER STAMPED JAMES M DAVIS USA SOLE AGENT with turned handle and 17 cards, the majority photographed by BW Kilburn Littleton N.H. including 013 victims of the Khodinsky Plain Panic Coronation week Moscow, Russia 3600 lives lost, 12166 the main hall in gambling house Monte Carlo, 12620 wreck of the battleship Maine Havana Harbour, 12075 Majesty and Beauty in soldiery Diamond Jubilee London, eight others, and Underwood & Underwood Royal Munster Fusilier's South Africa, orange with hospital South Africa, Statuary Hall Expedition Paris, qty. £30 - 50



Lot 504



Lot 503

503 - A RARE TIN PLATE ROTATING BATTERY CANNON early 20th century, the cannon with adjusting screw raised upon a rotating gallery with rollers raised upon a circular base 8 1/2" high the base 8 1/2" diameter
See illustration £300 - 400

504 - AN SFBJ FRENCH BISQUE HEAD CHARACTER DOLL with later brown wig, sleeping eyes, the mouth with two teeth jointed composition body with a silk dress, lace trim underskirt and a early 20th century silk and lace trimmed Christening gown, 19"
See illustration £150 - 200

BOOKS

505 - MORTON JOHN C A CYCLOPEDIA OF AGRICULTURE, PRACTICAL AND SCIENTIFIC IN WHICH THE THEORY, THE ART AND THE BUSINESS OF FARMING ARE THOROUGHLY AND PRACTICALLY TREATED Volume One Blackie and Son, dated 1855 and four other parts, card backs, division four, five, six and seven (five)
 £80 - 150

506 - RUPERT COLLENS "A LOOK AT CECIL ALDIN'S DOGS AND HOUNDS"
 £40 - 60

507 - A J MUNNINGS. R.A. "PICTURES OF HORSES AND ENGLISH LIFE" An appreciation by Lionel Lindsay second edition Eyre and Spottiswoode second edition 1939
 £150 - 200

508 - FRANK E MASSEY ESQUIRE OF POOLE HALL, NANTWICH PORTRAIT SKETCHES OF CHESHIRE HUNTING MEN FROM 1850 TO 1890, George Faulkner and Sons 1903 red green and gilt tooled cover 11" x 14 1/4"
 £400 - 600

509 - SAM NETHANIEL BUCK "THE SOUTH VIEW OF WREXHAM IN THE COUNTY OF DENBEIGH" with margins dated 1748, 12 3/4" x 32 3/4" framed. £50 - 80



Lot 510



510 - RELATING TO THE 2ND BATALLION 22ND CHESHIRE REGIMENT CIRCA 1897 AND LATER including a large collection of addressed envelopes to Mr J.A. Jones, Birkenhead a large proportion decorated in pen and ink with amusing drawings including an officer in the Blues, The New Salute, Marriage three years after, approx. 35, 11 greetings cards circa 1901 an amusing Valentine Day card 1901 "To an Ape" depicting a sketch of an ape smoking a pipe, Straight from the Front, qty.

See illustration £50 - 80

511 - A LATE 19TH EARLY 20TH CENTURY SCRAP ALBUM with Victorian cut out transfers depicting animals, beauties approximately 44 pages each 14 1/2" x 10 3/4" and a similar album with Victorian cut outs of royalty, beauties, flowers, greeting cards 33 pages approximately 12 1/2" x 10 1/2"
 £50 - 100

512 - PETER BECKFORD ESQ., "THOUGHTS ON HUNTING", illustrations in colour by G Denholm Armour Hodder & Stoughton, No: 222 of a deluxe edition limited to 350 signed by the artist and numbered, leather and gilt binding 11 1/2" x 9"
 £200 - 300

513 - "THE LONSDALE LIBRARY VOLUME 1 "THE WAY OF A MAN WITH A HORSE" with 90 illustrations, London, Seeley Service & Co, 1930.
 £20 - 40

514 - JULIANA HORATIA EWING "JACKANAPES" illustrations by Randolph Caldecott, Daddy Darwin's dovecote, two identical volumes, Lob Lie-by-the-fire circa 1894, Robert Bloomfield "The Horkey" illustrations by George Cruickshank MacMillan 1882, Millicent Sowerby The Pretty Book, King Edward VII two volumes (8)
 £50 - 80

515 - SIR EDWARD GERMAN 1862-1936 SIGNED HEAD AND SHOULDERS PHOTOGRAPH and dated May 3rd 1902, 9 1/2" x 7 1/2" within an oak frame and a remarkable collection of signed letters and cards posted from 5 Biddulph Road, Elgin Avenue, London W9, 1925 and later some addressed to Miss Winifred Johnson, 65 Talbot Street, Whitchurch, Shropshire where he notes it is long ago since I wrote "Winifred Wee" of "The Damsel of Seven" still you have no great weight of years on your shoulders", other, to "Lizzie Johnson, 65 Talbot Street, Whitchurch", a letter dated February 18th 1927 "He's looking forward to coming down to conduct Tom Jones in April and then see you both again", "It is good to know that thing's at Bank Buildings are better, your affectionate cousin German", in another letter he refers to remembering the Brown's Bank incident in 1870, Jack Robinson and I were dropped off at Burleydam to walk home, a snowy night father meeting us at just about Broughall Chapel and putting me on his shoulders and carrying me in triumph to Whitchurch, and two loose photographs.
See illustrations on Back Cover £200 - 300

516 - SIR JOHN BARBIROLI A SIGNED BLACK AND WHITE PHOTOGRAPH FRAMED 5 1/2" x 7 1/2" and a photograph of Margaret Ballie 8" x 6"
 £40 - 60

517 - S BUCK "THE SOUTH WEST PROSPECT OF LIVERPOOL IN THE COUNTY OF LANCASTER", engraving dated 1728 within an oak frame, 10" x 28 1/2" some water staining and damp spotting.
 £40 - 60



Lot 524

- 518 - EDGAR ALLEN POE "TALES OF MYSTERY AND IMAGINATION"** by Harry Clarke London G Harrap and Co Limited £40 - 60
- 519 - R BOWDLER SHARPE LLD A HANDBOOK TO THE BIRDS OF GREAT BRITAIN** London Edward Lloyd Limited 1896 four volumes £40 - 60
- 520 - FARMING AND RELATED SUBJECTS,** Herbert Hughes & J O Jones "Plague on the Cheshire Plain and account of the Great Foot and Mouth Epidemic 1967-1968 with dust jacket, S Graham Brade 'Birks Modern Farming 1950, 3 volumes, JE Nichols "Livestock Improvement" 1945, "Animal Management" 1908. WC Miller "Blacks Veterinary Dictionary" 1946, and a quantity. £40 - 60
- 521 - RIDING AND HUNTING RELATED,** M. Horace, Hayes, Frcbs, "Riding and Hunting Hurston Blackett" 1901, W Frank Calderon "The History of Reynard "The Fox" 1895, Sir F Fitzwygram, Bart "Horses and Stables" 1894, Capt J.L.N. Barrett "Practical Horsemanship" 1929. A Henry Higginson, Peter Beckford Esq., Collins London 1937, Mr Jorrocks Lectors with illustrations by G.D. Armour, Mrs Phillip Martineau "Hunting and Horses" 1930 and other books relating to horse management, foxhound's and hunting, qty. £40 - 60
- 522 - H. F. & G. WITHERBY LTD "THE HANDBOOK OF BRITISH BIRDS"** volumes 1,4 & 5, reprinted 1965, T A Coward "The Birds of British Isles and their Eggs" 3 volumes, other related bird books and poultry and HE Young "Apramulation of Wirral", F.C.Beazley Thurston 1934, WJ Oldham "The Ismay Line" qty. £40 - 60
- 523 - CHRISTOPHER SAXTON "CESTRIAE"** hand coloured within an oak frame, 16"x20 1/2" £50 - 80
- 524 - JOHN SPEED "LEICESTRENSIS COMITAVES LEICESTERSHIRE" DOUBLE PLATE ENGRAVED AND HAND COLOURED MAP** painted with armorial bearings including Robert de Belle Monte within an oak frame 17 3/4" x 21 1/4" with margins within an oak frame. *See illustration* £100 - 150
- 525 - TOUGH SKIN, CHESHIRE CATS AND CHESHIRE CHEESES,** illustrated by Hard Hyde with numerous illustrations of Cheshire sporting characters including Lord and Lady Daresbury, Eric Midwood, Frank Spiegelberg, Sir John Barlow, Running Tom, and Auld Jo Lewis within a red outer cover, 11 1/2"x8 1/4" £100 - 150
- 526 - HUTCHINSON'S POPULAR ILLUSTRATED DOG ENCYCLOPAEDIA,** 3 volume set, undated,

circa 1930's, numerous colour plates. £50 - 80

527 - THE PLAYS OF SHAKESPEARE, 3 volume set bound in half leather, illustrated by HC Selous, published Cassell, undated, circa 1900 £50 - 80

528 - CECIL ALDEN, "DOGS OF CHARACTER", 2nd edition, published 1928, KF Barker "Just Pups", 1942 reprint, KF Barker "Just Dogs", 1935 reprint (3) £80 - 100

529 - SIR ARCHIBALD ALISON, "HISTORY OF EUROPE", published Blackwood 1853, 13 books bound in 7 volumes, half leather, numerous engravings, bookplate of Philip Pennant of Nantlys, set. £100 - 150

530 - G DOBSON & F DEHAENAN (ILLUSTRATOR), RUSSIA 1ST EDITION, published A & C Black 1913, illustrated boards with numerous colour plates, T Varley & W Ball (Illustrator) Hampshire, 1st edition published A & C Black 1909 plus 5 other titles in the same series (7) £80 - 100

531 - JD SUMMERS-SMITH "THE HOUSE SPARROW" 1ST EDITION, published 1963-New Naturalist Monograph No: 19, J Gilmour & M Walters, "Wild Flowers", 1st edition, published 1954-New Naturalist No: 5 together with 8 titles in the same series, all with dust wrappers and other flower subjects (17) £80 - 100

532 - H CESKINSKY & E R GRIBBLE, "EARLY ENGLISH FURNITURE AND WOODWORK, 1ST EDITION, published by Waverley Book Co. 1922, two volume set, full leather binding, illustrated. £120 - 150

533 - LES BELLES HEURES DE JEAN DE BERRY, published Thames & Hudson 1974 in slip case, similar volumes by the same publisher, all in slip cases The Rohan Book of Hours, published 1973, The Grimani Breviary, Published 1972, The Visconti Hours, published 1972, all in good condition (4) £80 - 100

534 - TD WHITAKER, "AN HISTORY OF THE ORIGINAL PARISH OF WHALLEY & HONOR OF CLITHEROE, 3rd revised and englanded edition, published 1818, bound in half leather. £200 - 250

535 - TD WHITAKER, "THE HISTORY AND ANTIQUITIES OF THE DEANERY OF CRAVEN IN THE COUNTY OF YORK", 3rd edition, published 1878, a substantial work bound in full black leather with gilt decoration. £200 - 250

536 - R & JA BRANDON "THE OPEN TIMBR ROOF OF THE MIDDLE AGES", 1st edition, published 1860, embossed cloth binding with book plate of James Watts, Abney Hall, Cheshire, M Habershon, "The Ancient Half Timbered Houses of England", published 1936, an incomplete copy with the book plate of Raymond Richards (2) £80 - 100

537 - WR TYMMS "THE ART OF ILLUMINATING AS PRACTISED IN EUROPE FROM THE EARLIEST TIMES", 1st edition, published Day & Sons 1860, professionally rebound in half red morocco, numerous coloured lithographs. £80 - 100

538 - CF TUNNICLIFFE, "THE PEREGRINE SKETCH BOOK", 1st edition, published 1996 together with four other volumes illustrated by Tunnicliffe (5) £20 - 25

- 539 - E BRENT-DYER "SHOCKS FOR THE CHALET SCHOOL"**, 1st edition, published 1952 with dust wrapper, "Three Go To The Chalet School", 1st edition, published 1949 with repaired dust wrapper, "Carola Storms The Chalet School", 1st edition, published 1951 no dust wrapper, "The Chalet School and the Island", 1st edition, published 1950 with damaged dust wrapper, plus five other Chalet School early reprints, four with dust wrappers (9) £100 - 120
- 540 - ROBERT WA BREWER "THE ART OF AVIATION, A HAND BOOK UPON AEROPLANES AND THEIR ENGINES WITH NOTES UPON PROPELLERS"**, scarce 1st edition, published 1910, illustrated boards with numerous illustrations and dimensional drawings, WJ Claxton "The Mastery of the Air", 1920 edition, published Blackie, illustrated boards with numerous illustrations (2) £60 - 80
- 541 - R CALDECOTT "LAST GRAPHIC PICTURES PUB ROUTLEDGE 1888"**, "More Graphic Pictures, published Routledge 1887, Second Collection of Pictures and Songs published Routledge, undated but early edition, Picture Book No: 1, published Warne, undated, early edition(4) £80 - 100
- 542 - E LINKLATER "SEAL SKIN TROUSERS AND OTHER STORIES"**, scarce limited edition of fifty copies printed by Hague and Eric Gill on hand made paper, this is an unnumbered proof copy, privately bound in full leather, Wood engravings by Joan Hassall. £50 - 80
- 543 - GEORGE ORMEROD & OTHERS, SELECTION OF SKETCHERS OF OLD BUILDINGS IN THE NEIGHBOURHOOD OF MANCHESTER**, circa 1877, large oblong format containing numerous plates of Lancashire and Cheshire. Contents are disbound, RW Procter "Memorials of Manchester Streets", 1st edition, published 1874, Edwin Waugh, Besom Ben Stories, large paper edition, published 1881, quarter bound in leather (3) £80 - 100
- 544 - EDMUND DULAC "A FAIRY GARLAND"**, 1st edition, published Cassell 1928, cloth boards, no dust wrapper, "The Sleeping Beauty and Other Fairy Tales, early, undated edition, published Hodder & Stoughton, cloth boards, no dust wrapper,"Rubaiyat of Omar Khayyam", early undated edition, published Hodder & Stoughton, gilt decorated cloth boards without dust wrapper (3) £100 - 120
- 545 - RAYMOND RICHARDS "OLD CHESHIRE CHURCHES"** revised and enlarged edition, published Morten 1973 together with eight other volumes of Cheshire interest (9) £50 - 60
- 546 - JRR TOLKIEN "THE LORD OF THE RINGS"**, three volume set comprising The Fellowship of the Ring, The Two Towers and The Return of The King, a matched 2nd edition set, all 1st impressions, published 1966 with dust wrappers. £80 - 100
- 547 - S CRAMP (CHIEF EDITOR) AND OTHERS, HANDBOOK OF THE BIRDS OF EUROPE, THE MIDDLE EAST AND NORTH AFTRICA, THE BIRDS OF THE WESTERN PALEARCTIC**, nine volume set, published OUP 1977-1944, a fine set all with dust wrappers. £120 - 150
- 548 - SAMUEL JOHNSON, "THE WORKS"**, nine volume set, published by William Pickering 1825, bound in full leather expertly rebaced by the renowned book binder Paul Delrue. £200 - 250
- 549 - THOMAS DUGDALE "CURIOSITIES OF GREAT BRITAIN, ENGLAND AND WALES DELINEATED"**, eleven volume set in original cloth bindings, published by Tallis, numerous engravings and maps of England and Wales. £50 - 70
- 550 - A LARGE AND FASCINATING COLLECTION OF BILLS AND INVOICES RELATING MAINLY TO THE NORTHWCH AREA OF CHESHIRE** and dating from the early part of the 20th century, many with illustrated bill heads, chemists, cinemas, printers, shoe shops, garages etc. £250 - 300
- 551 - BADMINTON LIBRARY OF SPORTS AND PASTIMES, COURSING AND FALCONRY, THE POETRY OF SPORT, FISHING TWO VOLUMES, SEA FISHING, SHOOTING TWO VOLUMES, BIG GAME SHOOTING TWO VOLUMES**, illustrated cloth boards, early editions some 1st editions (9) £120 - 150
- 552 - LIONEL EDWARDS, A LEICESTERSHIRE SKETCH BOOK**, 1st edition, published Eyre & Spottiswoode 1935, cloth boards, no dust wrapper, Whyte Melville Hunting by Scent, published Eyre & Spottiswoode 1933 together with six other volumes of hunting interest (8) £60 - 80
- 553 - PROFESSOR JAMESON & OTHERS, DISCOVERY AND ADVENTURE IN AFRICA**, 1st edition, published Oliver & Boyd 1830, map present with engravings in the tex, F De Lesseps, The Suez Canal 1st Edition, published 1876 together with other topographical works (7) £80 - 100
- 554 - SIR WALTER SCOTT, PEVERIL OF THE PEAK**, four volume set, published 1822 bound in full leather, The Works of Virgil (commentary by J Conington) three volume set, published Bell 1898 bound in full leather, all edges gilt. £50 - 80
- 555 - THE GENTLEMAN'S MAGAZINE**, a four volume run 1741-1744, expertly rebound in quarter leather by Paul Delrue (4) £80 - 100
- 556 - BARBER'S PICTURESQUE ILLUSTRATIONS OF THE ISLE OF WIGHT** Published Simpkin and Marshall. Undated early edition. map and numerous engravings in original embossed cloth binding. J A Picton Memorials of Liverpool. 2 volume set pub 1873. Limited edition of 400 copies. Bound in half leather, all edges gilt. Together with four other early topographical works (7) £180 - 200
- 557 - J L MOTLEY THE RISE OF THE DUTCH REPUBLIC** Pub Wanamaker (NY). Undated early edition. 3 volume set - marbled boards bound in half leather. H Hallam. View of the State of Europe During the Middle Ages. 11th edition pub 1856. 3 volume set bound in full leather. Together with Hallam's Constitutional History of England in matching bindings - 3 volume set, 7th edition pub 1854. £80 - 100

558 - V WOLF THE DIARY OF VIRGINIA WOLF 5 volume set pub 1977-1984. All 1st editions with dustwrappers, ex-lib set. Quentin Bell. Virginia Woolf - A Biography 1st edition pub 1972. 2 volume set in dustwrappers together with a proof copy of Vol 1 £40 - 50

559 - LLOYDS REGISTER OF SHIPPING Vol 1 (register) covering period 1.7.31 to 30.6.32. List of Steamers and Motorships, Sailing Vessels etc. Together with Vol 2 (appendix) covering period 1.7.34 to 30.6.35. List of Shipbuilders, docks, telegraphic addresses etc, a Mersey Docks and Harbour Ledger (3) £80 - 100

560 - ELIZABETH HAMMOND MODERN DOMESTIC COOKERY AND USEFUL RECIPE BOOK with a Complete Family Physician and Instructions for Making Wines, Brewing, Baking etc. Scarce 1st edition pub 1816. Rebound copy - marbled boards bound in quarter leather. Together with The Country House containing The Poultry Yard, The Piggery, The Ox and The Dairy. New edition pub 1853 by Routledge. Numerous engravings. marbled boards, half bound in leather (2) £120 - 150

561 - A T BOLTON THE ARCHITECTURE OF ROBERT AND JAMES ADAM 1st edition. Pub 1922. Large folio, cloth boards, 2 volume set, together with three other volumes on architecture (5) £100 - 120

562 - ORMES COLLECTION OF BRITISH FIELDS SPORTS from designs by S Howitt, facsimile edition, twenty plates. £50 - 80

563 - CECIL ALDIN "RAT CATCHER TO SCARLET" 1927, printed by Eyre & Spottiswood, by the same author Scarlet to M.F.H. Eyre & Spottiswood 1933, 2 volumes. £40 - 60

564 - JOHN WELCOME & RUPERT COLLENS "SNAFFLES THE LIFE AND WORK OF CHARLES JOHNSON PAYNE", McLaren "Fishing for a Salmon", published by Stanley Paul with dust jacket and M.J. Farrell & Snaffles "Red Letter Days" with illustrations in colour Collins, London 1933, three front pages torn (3) £40 - 60

565 - R.E. EGERTON WARBURTON "HUNTING SONGS" ILLUSTRATED BY LIONEL EDWARDS, LONDON CONSTABLE & CO., 1925, Lionel Edwards R.I. Beasts of the Chase, Putnam & Co, London 1950 £40 - 60

566 - LADY HUNLOKE O.B.E. & CECIL ALDIN "RIDING" EYRE AND SPOTTISWOOD 1934, KF Barker, "The Young Entry" Fox Hunting, Beagling and Otter Hunting for Beginners Adam & Black 1939, A Melton Rough Rider with a forward by Guy Paget "Rum'Uns to Follow" memories of 70 years in the Shires, London Country Life, dust jacket inscribed from Lady Boles 1938, Charles Richardson "Practical Hints for Hunting Novices" Horace Cocks, London 1906. £40 - 60

567 - PETER BECKFORD "THOUGHTS ON HUNTING" illustrations in colour by G. Denholm Armour, Hodder & Stoughton, London, outer binding distressed interior complete, Richard Darwall Madcaps

Progress, The Life of John Mytton Eccentric Regency Sportsman, London JN Dent 1938, Handley Cross reprint 1983 and three others (6) £40 - 60

568 - MINOPRIO JOHN "THE BLUE AND THE BUFF" PORTRAIT OF AN ENGLISH HUNT", signed by the author and dated 1999, The Duke of Beaufort Fox Hunting 1980, Terrance Carroll "Diary of a Fox Hunting Man" 1984, Simon Blow. Fields Elysian Portrait of Hunting Society 1983, Roy Erin, Tom Firr of The Quorn 1984, Strange Stories of the Chase, Guest and Jackson The Hunting Year, Jackson The Great Hunts 1989. £40 - 60

569 - J A ALLEN BAILY'S HUNTING DIRECTORY 1978-1979 with three hunt maps and five other volumes 1986-1991 £20 - 40

570 - T H G PULESTON A HISTORY OF FOX HUNTING IN THE WYNNSTAY COUNTRY AND PART OF SHROPSHIRE from the beginning of the century to the end of the season of 1884/1885 1893, printed for private circulation only with the book plate for Baron William Schroeder 10 1/2" x 8" £40 - 60

SPORTING

572 - JOHN DERRICK "MISS EVELYN MASSEYS'S HUNTING CHARACTURES" including hunting songs by R E Warburton, text by Gordon Fergusson, foreword by Anthony Barber 1998 deluxe edition number 350 of 350 copies signed by John Derrick £80 - 150

573 - A VICTORIAN BLACK FOREST CARVING, GAME, MODELLED AS A PHEASANT, A HARE, GAME BAG, POWDER FLASK AND MUSKET against an oval with a label verso 'Binder' Baden 25 1/2" x 12" See illustration £400 - 600

574 - A FOLDING ORDNANCE SURVEY MAP used for following the Cheshire Hunt with an oak board and roll 50" x 50 1/2" £20 - 40



Lot 573



Lot 583

575 - SEAGROVE "STAG IN MOUNTAINOUS LANDSCAPE" signed and dated 1977 watercolour framed, 27" x 23" *See illustration* £100 - 150

576 - J HILLIARD "SUMMER PIGEON", signed and dated 88, framed 10¹/₂"x17". £100 - 150

577 - J HILLIARD "EVENING SKEIN", signed, framed 11¹/₂"x23¹/₂". £100 - 150

578 - A STAGS HORN AND SILVER MOUNTED RIDING CROP Chester circa 1902, a second crop London circa 1909, an ivory and silver mounted walking cane, London 1910 and two walking sticks (6) £80 - 120

579 - A CHRISTY'S LONDON LADIES RIDING BOWLER HAT 6⁵/₈ in good condition and a stags horn handled steel line riding whip (2) £40 - 60

580 - A FOXES MASK MOUNTED ON A HARDWOOD SHIELD 10" £20 - 40

581 - A JAQUES CROQUET SET comprising four mallets, four balls, hoops, modern within a outer cardboard case. £50 - 80

582 - OUT HUNTING, WOOL WORK TAPESTRY within a gilt frame, 21¹/₂"x17¹/₂" £20 - 40

583 - A RARE ENAMEL AND SILVER WHIPPET SLIPPING COURSING MEDAL presented handicap of September 12th 1891 for slipping the winning dog Borough Grounds Oldham with a central enamel plaque 29gms within a red velvet lined case
See illustration £200 - 300

PRINTS

585 - SNAFFLES CHARLES JOHNSON PAYNE 1884-1967 "GREAT BANKS THERE WAS BELOW IN THE FIELDS" coloured print signed in pencil 19¹/₂" x 26³/₄" including margin.
See illustration £800 - 1200



Lot 585



Lot 586

586 - CECIL ALDIN 1870-1935 "A WELL EARNED REST" Sealyham signed dry point etching number 84 of a edition of 150, published by Eyre and Spottiswood, framed see illustration 9" x 11³/₄" £800 - 1000



Lot 587

587 - SNAFFLES CHARLES JOHNSON PAYNE "THE TIMBER MERCHANT" signed in pencil with blind stamp see illustration 17³/₄" x 16¹/₄" £300 - 400



Lot 588

588 - SNAFFLES CHARLES JOHNSON PAYNE "THE BENDER" signed in pencil with remarque see illustration 15¹/₂" x 17³/₄" 1870-1935 £800 - 1200

589 - SPARE LOT

590 - AFTER CECIL ALDIN 'OLD MANOR HOUSE BERKSHIRE' coloured print signed in pencil lower left hand side with remarque 17 x 13¹/₄", framed. £150 - 200



Lot 592

591 - THE HUNTMASTER AND HOUNDS BLACK AND WHITE PRINT and 5 identical published by George W Bullock with watermark 22¹/₄" x 28" (6) £40 - 60

592 - SIR WILLIAM RUSSELL FLINT "SEVEN VARIATIONS" number 164 of a limited edition of 850 with blind stamp unsigned within a gilt frame 19¹/₄" x 26³/₄" See illustration £200 - 300

593 - SIR WILLIAM RUSSELL FLINT "RECLINING BEAUTY ON A COUCH" number 681 a limited edition of 750 with blind stamp framed 12" x 21¹/₂" See illustration £100 - 150

594 - SPARE LOT

595 - LIONAL EDWARDS "A GOOD DAYS HUNTING" published by Horse and Hound, Lional Edwards estate 1986, No: 104 from a edition of 500 copies within a maple frame 18¹/₂"x14¹/₂" £40 - 60

596 - LIONEL EDWARDS THE CHESHIRE HUNT coloured print signed on the left hand side in a Hogarth style frame 10¹/₂" x 15¹/₂", John King "The Cheshire Beagles 1975 Bunbury Church" signed number 27 from a limited edition of 250 19" x 25¹/₂" £40 - 60

597 - RJ DUPONT "AWAY FROM MAESFEN", signed by the artist and W Williams Wynn, 17"x24" £20 - 40

598 - DANIEL MACLISERA "THE DEATH OF NELSON AT THE BATTLE OF TRAFALGAR" from the original wall painting in the Palace of Westminster engraving black and white by Charles W Sharpe Art Union of London 1876 21" x 52¹/₂" the margins with water staining frame distressed £50 - 80

599 - LIONEL EDWARDS OLD BERKSHIRE HUNT coloured print signed lower left hand side framed 10³/₄" x 14³/₄" £20 - 40



Lot 593

600 - GELDART "THE DRAY MAN" signed in pencil No: 12 of an edition of 600, framed, 30³/₄"x14", Geraldine Hillmer ARPS, Christmas Scene, Prestbury, signed original hand printed colour photograph No: 10 of an edition of 100, 11¹/₂"x15¹/₂" framed £40 - 60

601 - HERBERT DICKSEE "HIS ROYAL HIGHNESS" study of a lion unsigned proof, framed 10¹/₂" x 8¹/₄" with an oak frame £50 - 80

602 - CECIL ALDIN "THE ATHERSTONE, AWAY FROM THE AMBION" signed in pencil, 14¹/₂"x25" £80 - 150

603 - J HILLIARD "IN THE DEAD WOOD" a signed limited edition number 17 of an edition of 20 framed 8³/₄" x 13" £40 - 60

604 - SIR WILLIAM RUSSELL FLINT RA "The Seven Springs of Vers" facsimile signature 11" x 16¹/₂" framed £40 - 60



Lot 605

605 - RECLINING BEAUTY, CHRYSOLEUM printed 39.Z Dresdener Galerie, framed, 8"x10¹/₂" See illustration £80 - 150

606 - H ALKIN "HUNTING INCIDENTS" SERIES OF FOUR coloured prints each within Hogarth style frames, 12¹/₂"x16¹/₂" £50 - 80

607 - AFTER JOHN GRAHAM "THE RIGHT HONORABLE WILLIAM HUSKISSON" engraved by J. Cochran and signed by Huskisson, portrait 6"x4¹/₂", Princess Charlotte, William Pitt, William Wentworth Fitzwilliam each within rosewood frames and two similar engraving of Dante and another within similar smaller rosewood frames. See illustration £100 - 150

608 - A VICTORIAN CHRYSOLEUM "DEEP IN THOUGHT" four beauties seated round a table with a suitor by a country dwelling, framed, 10⁷/₈" x 14¹/₄" See illustration £80 - 120



Lot 607



Lot 608

- 609 - GROUSE AND A COMPANION "WATER BIRDS BY A SEA SHORE"** 10³/₄"x15³/₄", framed £40 - 60
- 610 - A CHRYSOLEUM "THE ART TEACHER"** 6¹/₂"x11", "Bird Song", 8"x9¹/₂" framed and a pair of Beauties each framed 10"x6¹/₄" (4) £50 - 80
- 611 - A VICTORIAN CHRYSOLEUM** "Beauty seated in a treelined landscape beside a river", 9¹/₂x7¹/₂" £50 - 80
- 612 - AFTER W MENSLAR A CHRYSOLEUM LATE 19TH CENTURY "BEAUTIES ON PARADE", ANOTHER "A MUSICAL INTERLUDE"**, 8"x10". £40 - 60
- 613 - "BETROTHAL" A CHRYSOLEUM WITHIN AN ORNATE ACORN AND OAK LEAF FRAME** 9³/₄" x 8" £40 - 60
- 614 - A BAXTER PRINT "A BEAUTY HOLDING A BASKET OF FRUIT IN A MOUNTAINOUS LANDSCAPE"**, 40¹/₂"x10¹/₂" £20 - 40
- 615 - HARRY B NEILSSON "MR FOXES HUNT BREAKFAST"** coloured lithograph circa 1900 within a fluted oak frame 13¹/₂" x 27³/₄" £40 - 60
- 616 - AFTER D V HEERDE LIONESS AND CUBS** framed 20" x 29¹/₂" £50 - 80
- 617 - JAMES STUART "HUNTING, THE OLD STYLE"** 17³/₄"x21¹/₂" within an oak frame and a companion The New Style, a pair £40 - 60
- 618 - LIONEL EDWARDS "THE QUORN"** coloured reprint, framed 10¹/₂"x15¹/₂", Quorn Charnwood Forest, Cottismore, Belvoir, a set of four, framed. £40 - 60
- 619 - LIONEL EDWARDS "HUNTING TYPES THE THRUSTER"** 14"x17³/₄" and a companion The Dealers Man, a pair. £40 - 60
- 620 - L F ABBOTT "SOCIETY OF GOFFERS AT BLACKHEATH"**, after an engraving by V Green published by R Powell, London 30¹/₂"x22¹/₂" framed £30 - 50
- 621 - PF EVERS'SWINDELL "FOX HOUNDS"** coloured print, 17"x21", After CH Ancelin Racing and another (3) £20 - 40
- 622 - AFTER ARTHUR J ELSLEY "COURTING FAVOUR"** coloured reproduction 20¹/₂"x27¹/₂" framed. £20 - 40
- 623 - SIMON COMBES "MANYANA AFTERNOON"** coloured print signed by the artist number 576 of a limited edition of 1,500 framed 23" x 28" including margin £400 - 600

- 624 - SUE NORBURY "SHE WAS BEATEN BUT NOBODY TOLD HER"** number 38 of a limited edition of 800 coloured prints signed by the artist and Jonjo O'Neill number 38 of 50 signed by the jockey, Jonjo and Dawn Run Take the Last 86 Gold Cup, Cheltenham 23" x 18¹/₂" framed £50 - 80
- 625 - SUE NORBURY "A DAY IN A LIFETIME"**, Jonjo and Dawn Run after winning 86 Gold Cup Cheltenham signed by the artist number 38 of a limited edition of 500 also signed by Jonjo O'Neill 38 of 50 signed by the jockey 19" x 23¹/₂" framed £50 - 80
- 626 - A PAIR OF COLLINS SERIES POST CARD REPRINTS "METROPOLE & GRAND HOTEL, BRIGHTON"**, 7"x9", The Aquarium, Brighton No: 9363 each within oak frames, a pair, and a series of four LS & P reprints of Brighton including West Pier, The Sands, Paris Pier, and Sunset, framed as one, 31¹/₂"x13" (3) £50 - 80

WATERCOLOURS



Lot 631

- 631 - CECIL ALDIN RBA "A BAD ONE TO BEAT"** signed pastel within a rosewood frame 10¹/₄" x 14¹/₂" excluding margin, framed. *See illustration* £1500 - 2000
- 632 - G F WHITE "HARLECH CASTLE, WALES AT SUNSET"** signed watercolour 9" x 14¹/₂", framed. £100 - 150
- 633 - EDWARD HARGITT (1835-1895) "ANGLING THE QUIET POOL BENMORE ABSYNT SUTHERLANDSHIRE"** watercolour signed and dated July 1893, Grindley and palmer 17 Church Street, Liverpool, label inscribed verso, within an ornate leafy frame 13" x 20" *See illustration* £400 - 600



Lot 633



Lot 636

634 - SPARE LOT

635 - E J B EVANS STILL LIFE STUDY OF A BASKET OF APPLES, PEARS, GRAPES AND OTHER FRUIT IN A LANDSCAPE signed and dated 1905 13³/₄" x 18³/₄" framed £40 - 60

636 - SAMUEL JACKSON BRISTOL "VINCENTS ROCKS FROM NIGHTINGALE VALLEY NEAR BRISTOL" watercolour inscribed verso by Samuel Jackson of Bristol 1796-1869, a similar sketch at Venxxxxxx museum and article in the Connoisseur No: 1/1926 8"x10" See illustration £500 - 800

637 - W RICHARDSON "THE COUNTRY SEAT WITH A LADY ON HORSEBACK, COMPANION, HOUNDS AND ATTENDANT", signed and dated 1846, watercolour, 7"x10¹/₂" See illustration £100 - 150

638 - ENGLISH 20TH CENTURY SCHOOL ANIMAL STUDIES INCLUDING A KOALA BEAR, CAT, HEDGE HOG AND SQUIRREL (7) studies farmed as one, pencil, framed, 22¹/₂"x18" £40 - 60



Lot 637

639 - KEN SPENCER PORTRAIT HEAD AND SHOULDERS OF A BEAUTY signed and dated 1962 19¹/₂" x 13³/₄" £40 - 60

640 - GELDART "BEST OF FRIENDS", ink, signed and inscribed, and signed verso, 14" oval. £80 - 120

641 - GELDART "ABOUT TO PLAY", signed oval, 14" framed. £80 - 120

642 - GEORGE HARCOURT "BEAUTY BY CANDLELIGHT" watercolour signed with initials GH 13¹/₂" x 8¹/₂" framed. See illustration £400 - 600



Lot 642

643 - ENGLISH 20TH CENTURY SCHOOL STILL LIFE VASE OF BLOOMS, indistinctly signed, watercolour, framed, 60¹/₂"x19¹/₂" £20 - 40

644 - PAUL ARMSTRONG FALCON AND COMPANION PERCHED ON A BRANCH signed and dated 1974 watercolour 17¹/₂" x 13¹/₂" See illustration ***** £100 - 150

645 - JORDON LATE 19TH CENTURY ENGLISH PORTRAIT STUDY OF THREE CHILDREN within a tree and leaf background with an ornate leafy frame 8¹/₂"x5" £40 - 60

646 - ALFRED BURT "THE REV THOMAS ESQ OF MANCHESTER" signed lower right hand side and dated London 1835 within a rosewood frame, 11³/₄"x2¹/₂" See illustration £400 - 600

648 - A PORTRAIT MINIATURE 19th century of a lady ³/₄ length wearing a white lace cowl mop cap oval framed, an early 19th century portrait miniature of a lady wearing a lace cap ³/₄ length inscribed verso bought Burton sale 1804 oval 2¹/₄", early 19th century portrait miniature early 19th century of a gentleman with a powdered wig ³/₄ length possibly on ivory framed 2³/₄" See illustration ***** £80 - 150



Lot 644



Lot 646

649 - AN EARLY 19TH CENTURY SILHOUETTE OF A LADY HEAD AND SHOULDERS framed 4" and a silhouette of a lady head and shoulders her hair picked out in gilt within an oval framed 3" *****
See illustration £80 - 150



Lot 648 Lot 649

650 - A CATANO "FIGURES WALKING ON A QUITE PATHWAY IN AN ALPINE LANDSCAPE" watercolour signed see illustration 9 1/4" x 13"
£200 - 300



Lot 650

651 - F CATANO "STAGS IN A HIGHLAND LANDSCAPE" watercolour signed see illustration 9 1/4" x 13"
£200 - 300



Lot 651

OIL PAINTINGS



Lot 655

655 - C SOMERSET "EASTERN FIGURE SITTING ON A HILL TOP WITH AN OPEN LANDSCAPE", signed oil, 9 1/4"x13 1/2"
See illustration £200 - 300



Lot 656

656 - F MABEL HOLLAMS "FL.1897-1929" BRITISH "TWILIGHT PORTRAIT OF A BROWN HUNTER" oil on board 12" x 16 1/2"
See illustration £600 - 800

657 - ENGLISH LATE 19TH CENTURY SCHOOL LAKE AND MOUNTAIN LANDSCAPE WITH SAILING VESSELS, oil, unsigned, framed 9 1/2"x15 1/2"
£100 - 150



Lot 658

658 - A ROWLAND "PERCH FISHING" "The First to the Net" oil on canvas signed and dated.
See illustration £400 - 600

659 - EDWIN FREDERICK HOLT "THREE HEAVY HORSES IN A FARMYARD WITH A COLLIE DOG, POULTRY AND LABOURERS" signed E F Holt Prize, MED RA 1881 oil on canvas, framed 19 1/4" x 23 1/4"
See illustration on cover £1500 - 2000



Lot 660

660 - HENRY L ROLFE "EXHIBITED RA.B.ISS 1847-1841 SALMON AND TROUT" a pair, each 24" x 36" one signed and dated 1887 each with labels verso registered number 41120. *See illustration* £1000 - 1500

661 - ENGLISH 19TH CENTURY SCHOOL "PORTRAIT OF A GENTLEMAN" 3/4 length, oil on canvas, framed, 29 1/2"x24 1/2" £100 - 150

662 - IN THE MANNER OF SIR GODFREY KNELLER "ROBERT HARLEY EARL OF OXFORD AND MORTIMER K.C." 1661-1724, oil on canvas in an ornate frame, 12"x9 1/4" *See illustration* £500 - 800



Lot 662

663 - 19TH CENTURY SCHOOL OR LATER "PORTRAIT THE CARDINAL" oil on canvas, unsigned, 35"x28 1/2" £800 - 1200



Lot 664



Lot 671

664 - C H SMART "WAITING FOR DADDY" COUNTRY LANE WITH FIGURES OUTSIDE THE HOMESTEAD", oil on canvas and signed 21"x 28" within a gilt swept frame.

See illustration £300 - 400

665 - V MARTIN "HIGHLAND CATTLE WATERING IN A MOUNTAINOUS LANDSCAPE WITH A FIGURE", signed, 20th century 19 1/2"x 23 1/2" £20 - 40

666 - LINNELL, FIGURE BY A WATERFALL, oil on canvas and a companion, a pair. 15 1/2"x11 1/2" £40 - 60

667 - A 19TH CENTURY PORTRAIT OF A GENTLEMAN HEAD AND SHOULDERS, oil on canvas, unsigned, 30 1/2"x25" £100 - 150

668 - ENGLISH LATE 19TH CENTURY SCHOOL MOTHER AND CHILDREN BY THE OLD WATERMILL indistinctly signed oil on canvas framed 13 3/4" x 18 1/4" signed A E Allen £80 - 150

669 - 19TH CENTURY DUTCH SCHOOL "SHEEP IN A SNOWY TREE LINED LANDSCAPE" signed ...I Mace 7 1/2" x 11 1/2" framed £150 - 200

670 - CONTINENTAL SCHOOL THE LAST SUPPER oil on canvas possibly over a printed ground framed 29" x 41 1/2" £80 - 120

671 - MARY GODSAL "MASHER AT WILLOWBROOK" about 1890 oil on canvas inscribed verso, framed, *see illustration* 15 1/2" x 11 1/2" £50 - 80



Lot 673



Lot 674

672 - CHARLES ROSSITER "THE DUET" oil on canvas, signed lower right hand side, framed, 5³/₄"x7³/₄" £80 - 150

673 - ENGLISH 19TH CENTURY SCHOOL PORTRAIT OF A LADY SEATED IN A LANDSCAPE bears a signature Reynolds oil on canvas in an oval 24" within a gilt composition frame See illustration ***** £200 - 300

674 - JAMES SINCLAIR "HIGHLAND CATTLE WATERING IN A MOUNTAINOUS LANDSCAPE", oil on canvas, signed, framed, 19¹/₂"x29¹/₂" £150 - 200



Lot 675 pair



675 - FL JAMIESON "HIGHLAND CATTLE IN THE TROSAACHS", oil on canvas, signed, 16"x24" and a companion "Ayles of Bute" near Jeznavruxk a companion signed, a pair. See illustration £300 - 400

676 - ENGLISH LATE 19TH CENTURY SCHOOL "ANGLING BY THE LAKESIDE", initialed, oil on canvas, 9¹/₂"x13¹/₂" framed £20 - 40

679 - RONI CONTINENTAL LANDSCAPE WITH A CASTLE ABOVE A RIVER, signed, framed, 20"x27" £40 - 60

680 - ENGLISH LATE 19TH CENTURY SCHOOL, THATCHED COTTAGE BY A POND IN A TREELINED LANDSCAPE, 7¹/₂"x11¹/₂", a companion, a pair and a 3rd by the same hand (3) £40 - 60

681 - AUTUMN SPLENDOUR signed oil on canvas framed 19¹/₂" x 29¹/₂" See illustration £80 - 120



Lot 681

682 - F VAN BUCK DWELLING BESIDE THE RIVER BRIDGE in landscape oil on canvas signed 19¹/₂" x 27¹/₂" £40 - 60

683 - JULIAN RICHARDSON FIGURES WALKING ON A COUNTRY PATHWAY BY A RIVER oil on canvas signed 7¹/₄" x 9¹/₄" framed and a companion, a pair £100 - 150

684 - PERUVIAN SCHOOL "CATTLE AND LAMAS WITH FIGURES IN A LANDSCAPE" 7"x9¹/₂" and a 2nd silk work picture, N Mandra, Bali depicting birds perched in branches 9"x6¹/₂" (2) £20 - 40



Lot 685

685 - JAMES LONGUEVILLE "BEESTON CASTLE NEAR TARPORLEY, CHESHIRE" oil on board signed and framed see illustration 19¹/₂" x 29¹/₂", £500 - 800

686 - J. BRINK DUTCH INTERIOR A FRUGAL MEAL PAINTED ON OPAQUE GLASS, signed within an ebonised frame, 15¹/₂"x23¹/₂" xxxxx £50 - 80

BAROMETERS

690 - A FORTIN BRASS CASED STICK BAROMETER with a 6¹/₂" scale stamped Townson and Mercer Limited, London the cylindrical tube with a turning screw, the reservoir with adjustable screws on a hardwood plinth 40" £80 - 120

691 - A VICTORIAN OAK BAROMETER with a 7¹/₂" enamel dial above a thermometer, the shaped case carved with flowers and leaves, 33" £80 - 120

MANTEL CLOCKS

692 - AN EDWARDIAN JAPAN PATTERN MANTLE TIMEPIECE with a 3¹/₂" silvered dial made in Wurtenberg in an ornate domed case decorated with a Japanese figure, flowers and dwelling 5¹/₄" high ***** £40 - 60



Lot 693 Lot 695 Lot 696 Lot 697

693 - A FRENCH BRASS CASED REPEATING CARRIAGE CLOCK with a white enamel dial signed Hall and Company, Paris, (blue roundel) and Arabic numerals with a platform lever escapement striking on a coiled gong, the movement stamped E.M and Company, the cornich case with fluted quarter columns raised upon a plinth base with associated Morocco carrying case 5" high. *See illustration* £100 - 150

694 - A FRENCH CARRIAGE TIME PIECE with a 1³/₄" white dial with Roman numerals with a platform lever escapement in a plain brass case with a red Morocco case lacks carrying handle 4¹/₄" £40 - 60

695 - A VICTORIAN MANTLE TIME PIECE with a white enamel two piece dial with Arabic numerals, the brass case stamped on the reverse The British United Clock Company Limited within an ebonised fluted circular case raised upon a fluted column and a plinth base 8¹/₄" high *See illustration* £80 - 150



Lot 698

696 - A LEROY AND FILS REPEATING CARRIAGE CLOCK with a 2" white enamel dial with Roman numerals signed Leroy and Fils 211 and 213 Regent Street, London and Palais Royal Paris, the platform lever escapement with repeat striking on a saucer bell the gilt bronze case with fluted columns raised upon a plinth base and bracket feet with leather carrying case 6" including handle. *See illustration****** £200 - 300

697 - AN EARLY 20TH CENTURY BRASS TICKET TIME PIECE of upright cylindrical form with two rows of tickets, glass panel raised upon a circular base and bracket feet, 6" high. £40 - 60

698 - A VICTORIAN BLACK SLATE AND FIGURAL MANTLE CLOCK with a 3¹/₂" white dial stamped Paris the two train eight day movement with outside count wheel striking on a saucer bell the case surmounted with a bronze of a knight on his charger the breakfront marble case inlaid with line inlays 18¹/₂" *See illustration* £100 - 150

699 - A FRENCH CARRIAGE TIMEPIECE with a 2" white convex dial with Arabic numerals painted with festoons with a subsidiary alarm dial with a platform lever escapement the serpentine case with foliate filigree panels raised upon toupie feet with carrying case and key, 6¹/₄" £100 - 150

WALL CLOCKS

703 - A SHIPS TIMEPIECE the 5³/₄" painted dial stamped Story, Barrow, subsidiary seconds lacking finger with a later movement within a brass case £40 - 60

704 - A BRASS SHIPS CLOCK with a 5³/₄" white dial with subsidiary seconds, Roman numerals, stamped Made in England within a circular brass case. £40 - 60

705 - A CUCKOO CLOCK 20TH CENTURY with a 3" dial with Roman numerals the German movement with two bellows and cuckoo, the case carved with an overhead cuckoo and vine leaves with two weights and a pendulum. £40 - 60

706 - AN EARLY VICTORIAN ROSEWOOD AND MOTHER OF PEARL FUSEE WALL CLOCK with a 11¹/₂" white dial, Roman numerals a single train fusee and chain movement, the case with a moulded brass bezel and inlaid with Mother of Pearl leaves with undercut base with a glass lenticle with foliate ears, 23¹/₂" £250 - 350

LONGCASE CLOCKS

710 - A GEORGE IV OAK AND MAHOGANY CROSSBANDED LONGCASE CLOCK with a 13" white arch dial signed W Massey, Nantwich the spandrels painted with figures emblematic of the four seasons the arch painted with Daniel and the Lion, the two train eight day movement, with anchor escapement, rack striking on a bell, the case with a swan neck cresting, fluted columns the trunk with a shaped crossbanded door, fluted quarter columns raised upon a panelled plinth base, canted angles, lacking supports, 85". £300 - 400



Lot 711



Lot 715



Lot 716

711 - A GEORGE III OAK LONGCASE CLOCK with an 11" brass dial and a silvered chaptering signed Braithnai Hankshea with cast mask and leafy spandrels, Roman and Arabic numerals with date aperture, the single train movement with outside countwheel striking on a bell, the case with a cavetto cornice above a plain frieze, turned columns the long door with a shaped top raised upon a plinth base 81" high.

See illustration

£500 - 800

713 - A GEORGE IV MAHOGANY LONGCASE CLOCK with a paper label for Henry Walker Cabinetmaker, New Road, Lancaster with a 14" white arched dial signed Thomas Armstrong, Poulton with subsidiary seconds, the spandrels painted with flowers the arch with a classical maiden symbolic of Britannia, the single train movement with a blind aperture with outside countwheel striking on a saucer bell, the case with a swan neck cresting centred with a urn, turned columns, the trunk with an arched door, well figured wood, fluted angles raised upon a plinth base and turned feet 92" high.

£300 - 400

714 - A VICTORIAN OAK LONGCASE CLOCK with a 14" white dial with roman numerals, subsidiary seconds the two train eight day movement striking on a bell the case with a swan neck cresting, shaped trunk door raised upon a plinth base 84"

£300 - 400

715 - AN EARLY VICTORIAN MAHOGANY LONGCASE CLOCK with a 14" white dial signed W Palin, Nantwich with subsidiary seconds and date dials, the spandrels painted with classical figures the two train eight day movement with anchor escapement, rack striking on a bell the case with swan neck cresting, rosewood crossbanded arch with fluted quarter columns the glazed door now detached, the case with lancet shaped door, raised upon a plinth base lacking supports with two weights, pendulum and winding key, 84"

See illustration

£300 - 400

716 - 19TH CENTURY MAHOGANY LONG CASE CLOCK with a 14" brass dial signed Thomas Blundell, Dublin with subsidiary seconds and date aperture, Roman and Arabic numerals, cast mask and leafy spandrels the arch with a lunar calendar depicting a masted galleon and a landscape with a dwelling, with a Wilson false plate, the two train eight day movement striking on a saucer bell the case with a dentil cornice above a shell and scrolling leaf frieze, spirally turned brass capped columns, the trunk with a shaped door flanked with spirally fluted columns raised upon a plinth base and bracket feet with pendulum and two weights 92" high. *See illustration*

£400 - 600

717 - A VICTORIAN OAK AND INLAID LONG CASE CLOCK with a 14" white dial with Arabic numerals, subsidiary seconds and date dials, the arch painted with a classical maiden, the two train eight day movement with anchor escapement, rack striking on a bell, the case with a swan neck cresting above turned columns, the panelled door flanked by fluted columns raised upon a plinth base 89" high

£150 - 200

OAK FURNITURE

722 - A VICTORIAN OAK HALL CUPBOARD with a dentil cornice above leaf carved columns above two panelled cupboard doors each carved with scrolling leaves raised upon a plinth base 85" x 43"

£100-150

723 - A VICTORIAN OAK HIGH BACK DRESSER with cavetto cornice above three plate rails, the lower part with a rectangular top above a panelled cupboard door flanked by three banks of drawers, brass drop handles raised upon shaped bracket feet 77" x 63"

£200-300



Lot 724

724 - AN EARLY 19TH CENTURY OAK AND MAHOGANY CROSSBANDED LANCASHIRE MULE CHEST the rectangular moulded top with a hinged top above an arrangement of six frieze drawers above three drawers each with oval brass handles flanked by quarter columns raised upon a plinth base and bracket feet, 32 1/2" x 63" x 21"

£300 - 400

725 - A JACOBEAN STYLE OAK WALL MIRROR, 20TH CENTURY, a rectangular mirror moulded frame enclosed by scrolling leaves, 43" x 31"

£80 - 150



Lot 726

726 - A 17TH CENTURY OAK ELBOW CHAIR with later alterations with an arched cresting above a fluted frieze downswept arms, board seat raised upon shaped square legs 37 $\frac{1}{2}$ " high and a 19th century oak side chair with a pierced vase shaped splat (2) £50 - 80

727 - A 19TH CENTURY OAK CRICKET TABLE the 29" diameter plank top raised upon shaped rectangular supports with a triform shaped apron 31 $\frac{1}{2}$ " £100 - 150

728 - AN EARLY 19TH CENTURY ELM BEECHWOOD AND YEW WINDSOR ELBOW CHAIR the hooped back with a central pierced vase shaped splat flanked by plain spindles, the dished seat raised upon baluster turned legs joined by a crinoline stretcher 35 $\frac{1}{2}$ " £100 - 150

729 - AN EARLY 20TH CENTURY OAK FILING CUPBOARD with a moulded top above a slatted shutter enclosing ten shelves, fluted uprights raised on a plinth base see illustration 36" x 19" x 16" £100 - 150

730 - AN EARLY 19TH CENTURY OAK MULE CHEST the rectangular moulded hinged plank top above a plain mahogany frieze, two large crossbanded false drawers above an arrangement of five drawers each with brass swan neck handles flanked by fluted quarter columns raised upon a plinth base and ogee bracket feet, 39"x64"x21" £400 - 600



Lot 729

731 - AN 18TH CENTURY OVAL OAK GATELEG DINING TABLE with a 53" diameter plank top raised upon square headed turned supports terminating in square legs with replaced tips joined by turned stretchers, 29 $\frac{1}{2}$ " high. £80 - 120

732 - A LATE 17TH EARLY 18TH CENTURY OAK BLANKET CHEST the rectangular planked top above a channelled frieze and two panels raised upon plain stile feet, 24"x44"x19" £80 - 150

733 - A 19TH CENTURY OAK SIDE TABLE the rectangular top above a crossbanded frieze drawer raised upon plain legs of square section 28 $\frac{1}{2}$ " x 37 $\frac{1}{2}$ " x 18 $\frac{1}{2}$ " £50 - 80

734 - A PAIR OF EARLY 19TH CENTURY ASH AND BEECHWOOD LANCASHIRE LADDER BACK SIDE CHAIRS and a Victorian alderwood elbow chair (3) £60 - 100

735 - AN EARLY 19TH CENTURY OAK AND MAHOGANY CROSSBANDED BUREAU enclosing a fitted and divided interior above four long graduated drawers each with brass handles raised upon a plinth base and bracket feet, 43"x41"x20" £150 - 200



Lot 736

736 - AN EARLY 19TH CENTURY OAK AND MAHOGANY HANGING CORNER WALL CABINET with a cavetto cornice above a plain frieze and a panelled cupboard door inlaid with stringing enclosing two shelves, canted angles 39 $\frac{1}{2}$ " x 29" x 50 $\frac{1}{2}$ " See illustration £100 - 150

737 - AN 18TH CENTURY OAK WARDROBE with a cavetto cornice above a plain frieze and a pair of panelled crossbanded cupboard doors enclosing a brass rail, H brass hinges fluted quarter columns the lower part with four frieze false drawers raised upon a plinth base and bracket feet, 75"x57"x20" £400 - 600

738 - A PAIR OF EARLY 20TH CENTURY OAK LEATHER AND BRASS STUDIED HALL CHAIRS each with a leather frieze stamped with a lion rampant, leaves and flowers above turned spindles stamped leather seat raised upon turned front legs, an early 20th century bobbin frame and upholstered corner chair, an pair of Edwardian oak cane seat bedroom chairs (5) £50 - 80



Lot 743

739 - A 17TH CENTURY STYLE OAK BOX the rectangular top above a panel carved with a lozenge centred with flower head, fluted stile supports now with a liner 18" x 27" x 13" £50 - 80

740 - AN EARLY 20TH CENTURY OAK LEATHER AND STUDIED MAGAZINE HOLDER the slightly domed cover with leather panels to each side and carrying handles 18" x 18 1/2" x 17 1/2" £40 - 60

741 - A VICTORIAN OAK SIDE TABLE the rectangular top with a leaf carved frieze raised upon turned vase shaped legs joined by carved stretchers raised upon casters 13 1/2" x 42" x 17" £40 - 60

742 - AN EARLY 19TH CENTURY ELM AND BEECHWOOD COMB BACK WINDSOR CHAIR the arched rail above a pierced vase shaped splat flanked by plain spindles, the dished seat raised upon ring turned baluster legs joined by a crinoline stretcher 36" £100 - 150

743 - AN EARLY 19TH CENTURY ELM AND BEECHWOOD WINDSOR CHAIR the hooped back centred with a pierced vase shape splat, plain spindles, dish seat raised upon turned baluster legs joined by a crinoline stretcher and an early 19th century Windsor chair the D shaped back enclosing plain spindles. Dish seat raised upon turned baluster legs (2) 27 1/2" See illustration £100 - 150

744 - A GEORGE IV OAK TRIPOD TABLE the rounded rectangular tray top above a turned vase shape shaft, downswept supports and pad feet, 28"x22 1/2"x18 1/2". See illustration £80 - 150



Lot 744

745 - AN EARLY 20TH CENTURY OAK REFECTORY TABLE with a rectangular plank top raised upon pierced slab ends joined by a stretcher raised on platform feet 30" high x 72" x 31 1/2" £100 - 150

746 - A VICTORIAN OAK EXTENDING DINING TABLE enclosing two leaves, the rectangular top with a moulded border raised upon square headed fluted vase shaped legs and casters 30" high x 47" x 95" See illustration £400 - 600



Lot 746

747 - A SET OF SEVEN OAK DINING CHAIRS, 20TH CENTURY each with arched cresting rails above shaped solid splats, padded drop in seats raised upon vase shape front legs, plain outset rear legs (6+ 1 elbow chair) £100 - 150

748 - A GEORGE III OAK CHEST the rectangular plank top with a moulded border above two short and three long cockbeaded drawers now with later brass swan neck handles raised upon a plinth base and bracket feet, 41 1/2"x44"x22" See illustration £200 - 300



Lot 748

749 - AN ARTS AND CRAFTS OAK BEDSIDE CUPBOARD with a dwarf back, the rectangular top above a panelled cupboard door, part marble lined, the back with three roundel apertures raised upon a stand and tapering legs 32" x 16" See illustration £50 - 80

750 - A LATE 18TH EARLY 19TH CENTURY OAK SIDE TABLE the rectangular plank top with a moulded border above a frieze drawer raised upon square headed acorn and reel turned legs, bobbin feet joined by cross stretchers 28 1/2" x 30" x 20" See shared illustration £80 - 150



Lot 749 Lot 750

751 - AN EARLY 19TH CENTURY OAK MAHOGANY CROSSBANDED AND INLAID LANCASHIRE MULE CHEST the rectangular hinged top with a moulded border enclosing a lidded compartment above two false drawers and four long drawers each crossbanded and inlaid with ebony stringing, brass swan neck handles flanked by inlaid quarter columns raised upon three front ogee bracket feet 40" x 62" x 21" *See illustration* £400 - 600



Lot 751

752 - AN EARLY 19TH CENTURY OAK SIDE TABLE the rectangular moulded top above a frieze drawer, brass swan neck handles raised upon legs of square section 27" x 30" x 18 1/2" £100 - 150

753 - AN OVAL OAK GATELEG DINING TABLE with two hinged leaves above a frieze drawer raised upon baluster collared legs, square supports and turned feet 30" x 45" x 61" open £150 - 200



Lot 754

754 - AN EARLY 19TH CENTURY OAK GENTLEMAN'S PRESS CUPBOARD with a dentil cornice above a dentil frieze and a cavetto cornice above a pair of panelled cupboard doors, the lower part with two short and two long drawers, brass swan neck handles raised upon a plinth base and bracket feet 77" x 52" x 22 1/2" *See illustration* £200 - 300



Lot 755

755 - A SET OF SIX GEORGE III OAK DINING CHAIRS each with plain rail backs above fluted splats, board seats raised upon legs of square section. *See illustration* £150 - 200

756 - AN EARLY 19TH CENTURY OAK TRIPOD TABLE with a 33" diameter planked top, raised upon a turned vase and baluster shaft, downswept legs, 28" high *See illustration* £80 - 150



Lot 756

757 - A VICTORIAN OAK CHAISE LOUNGE with a leaf carved scrolling padded arm, padded back above a panel carved with oak leaves and acorns, well upholstered raised upon fluted vase shape legs and casters, 77" long. *See illustration* £180 - 250

758 - A GEORGE III OAK TRIPOD TABLE REDUCED, with a 26" diameter planked top raised upon a baluster shaft and downswept supports 18" £80 - 150

759 - A EARLY 19TH CENTURY OAK AND INLAID SIDE TABLE the rectangular plank top with an inlaid frieze drawer, brass handle, above a shaped apron raised upon tapering legs, 28 1/2" x 28" x 20" £100 - 150



Lot 757

760 - A SET OF SIX GEORGE III OAK DINING CHAIRS each with arched cresting rails above pierced vase shape splats, board seats raised upon plain legs of square section joined by cross stretchers.

See illustration

£200 - 300



Lot 760

761 - A GEORGE III OAK AND CROSSBANDED SETTLE the rectangular crossbanded back with four fielded panels, downswept arms, later board seat, loose cushion raised upon front cabriole legs and pad feet, plain rear legs, 46" high x 72 1/2"

See illustration

£300 - 400



Lot 761

762 - AN 18TH CENTURY OAK HANGING SALT BOX of upright rectangular form with a sliding panelled cover enclosing two divisions, 3 1/4" x 11 1/2"

See illustration

£50 - 80

763 - A SET OF SIX CAROLIAN STYLE DINING CHAIRS, 20TH CENTURY each with leaf carved cresting rails and rattan panels, padded drop in seats raised upon barley twist turned front legs (4+2)

See illustration

£150 - 200



Lot 763

764 - A 18TH CENTURY OAK MONTGOMERYSHIRE DRESSER with later carving with an enclosed plate rack, with a cavetto cornice above a pierced fret work frieze, three plate rails flanked by leaf carved cupboard doors and fluted columns the lower part with rectangular leaf carved top above three frieze drawers the shaped apron supported by four turned baluster columns with a pot board raised upon bracket feet, 82" high x 83" x 19"

See illustration

£800 - 1200



Lot 764



Lot 765



Lot 766

765 - AN 18TH LATE 19TH CENTURY OAK HALL CUPBOARD with a cavetto cornice above a pair of arched panelled cupboard doors, later carved with flower heads the sides carved with lozenger enclosing flowers the lower part with a moulded top above a frieze of leaf carved panels, three false drawers and two drawers each with brass handles raised upon bracket feet, 75"x58"x20 $\frac{1}{2}$ " See illustration £300 - 400



Lot 769

768 - A GEORGE III STYLE OAK LOW BOY 20TH CENTURY with a shaped rectangular top above three frieze drawers above a shaped apron raised upon shell moulded cabriole legs and pad feet, 29"x28 $\frac{1}{2}$ "x19 $\frac{1}{2}$ " See illustration £80 - 150



Lot 767

766 - A 19TH CENTURY CARVED OAK CHEST OF DRAWERS the rectangular planked top with a leaf carved border above an arrangement of three short drawers, two short drawers and two long graduated drawers each carved with leaves raised upon bracket feet, 39" highx50"x23" See illustration £250 - 350

767 - A REPRODUCTION OAK DRESSER the rectangular top above an arrangement of five drawers with a shaped apron raised upon turned supports joined by a pot board, 32"x55 $\frac{1}{2}$ "x16 $\frac{1}{2}$ " See illustration £80 - 150

769 - A GEORGE III OAK AND MAHOGANY CROSSBANDED HANGING CORNER CUPBOARD with a cavetto cornice above a pair of crossbanded panelled doors H brass hinges and brass escutcheon's enclosing four shelves 41" x 28" x 19" See illustration £250 - 350



Lot 770

770 - A GOOD SOLID OAK PLANTER the timber reconstructed from the staircase at Broughton Hall, Malpas, of rectangular form on slab feet 12 $\frac{1}{2}$ " x 48" x 17" See illustration £80 - 120



Lot 768



Lot 771



Lot 772

771 - AN 19TH CENTURY OAK DESK ON STAND

the rectangular top above a hinged fall front enclosing a fitted interior with five short drawers and three pigeon holes the lower part with a frieze drawer, brass knob handles raised upon slender legs 35"x24"x18"

See illustration

£150 - 200



Lot 773

772 - AN ARTS AND CRAFTS OAK HALL STAND

with an overhanging ovolo cornice above a frieze with six oak coat hooks and a slatted shelf above five coat hooks, a hinged glove box, enclosing the plain end supports a drip tray raised upon plinth bases 75" x 44 1/2" x 12 1/2" See illustration

£300 - 400



Lot 774



Lot 775

773 - AN OAK HIGH BACK DRESSER 20th century with a dentil and cavetto cornice above a wavy frieze with pendant roundels above an arrangement of two shelves flanked on either side by fielded panelled cupboard doors, H brass hinges above short drawers, the lower part with a rectangular top above three frieze drawers each with pierced brass and swan neck handles above three fielded panelled cupboard doors raised upon a plinth base 75 1/2" x 54" x 19 1/2"

See illustration

£400 - 600

774 - A GOOD REPRODUCTION OAK

EXTENDING DINING TABLE the rectangular plank top with cleated ends with drawer leaves above a channelled frieze, square headed turned columnar legs, square feet joined by an H stretcher see illustration 30" x 120" x 35 1/2"

£500 - 800

775 - A GOOD SET OF EIGHT REPRODUCTION LADDER BACK RUSH SEAT DINING CHAIRS

each with five wavy rails, the rush seats raised upon moulded front legs joined by a baluster stretcher (6 + 2) 8 See illustration

£400 - 600

776 - A GOOD EARLY 20TH CENTURY OAK

BUREAU with a raised back, the hinged fall front with an engraved griffin and leaf escutcheon strapwork hinges enclosing a leather lined fall front with three short drawers, an arrangement of nine pigeon holes, the lower part with two short drawers above a leaf and flower carved frieze with two short drawers, two similarly carved drawers winged cherub pear drop handles raised upon cup and cover supports, 47" x 36" x 19" See illustration

£150 - 200



Lot 776



Lot 777

777 - A REPRODUCTION OAK DRESSER the rectangular plank top above a plain frieze with three cock beaded drawers each with pierced brass plates and swan neck brass handles above a shaped apron, four turned baluster supports with a pot board on square section legs, see illustration 33" x 66" x 19 1/2"

£200 - 300



Lot 778

778 - A GOOD OAK AND MARQUETRY COURT CUPBOARD early 20th century the rectangular moulded top above a leaf and flower frieze, a panelled cupboard door carved with marquetry, tulips and flower heads in bog oak and holly, the top supported by leaf carved cup and cover supports above two frieze drawers raised upon leaf carved cup and cover supports joined by a shelf with a blind fret carved frieze on compressed bun feet, see illustration 53 1/2" x 54" x 20 1/2" £400 - 600



Lot 779

779 - AN OAK HALL SETTLE the rectangular back with three raised and fielded panels, downswept arms with a hinged board seat, loose seat cushion above two panels and two drawers each with brass swan neck handles raised upon plain stile feet 47 1/2" x 52 1/2"

See illustration

£300 - 400

780 - A CHOICE VICTORIAN BURR WALNUT COMPACTUM GENTLEMAN'S WARDROBE with a shaped cornice above a pair of arched panelled doors, an arched mirror door enclosing four sliding trays and two drawers each with roundel handles raised upon a plinth base 81" x 72" x 20" £300 - 400

781 - AN 18TH CENTURY OAK SIDE CHAIR with a shaped cresting rail above a vase shaped splat, board seat raised upon front cabriole legs, plain outset rear legs £80 - 150

£80 - 150



Lot 782

782 - AN 18TH CENTURY OAK BUREAU BOOKCASE with an overhanging cornice above a plain frieze and two fielded panelled cupboard doors, the lower part with a hinged fall front enclosing four pigeon holes and three drawers, the lower part with four fielded panels above two drawers reduced stile feet 71 1/2" x 48 1/2" x 20 1/2" See illustration £400 - 600

£400 - 600

783 - A SET OF SIX TITCHMARCH AND GOODWIN LADDER BACK DINING CHAIRS

£200 - £300

784 - A GOOD OVAL OAK DINING TABLE

£200 - £300

785 - A GOOD OAK DRESSER BASE £300 - £ 500

786 - A VICTORIAN PINE FREESTANDING

CORNER WALL CUPBOARD with a cavetto cornice above Four paneled cupboard doors £200 -£300

£200 -£300

ENGLISH FURNITURE

790 - A GEORGE IV MAHOGANY D END DINING TABLE with a central leaf raised upon slender baluster legs and peg feet 31" x 45 2 x 63" £ 200 - £ 300

791 - A VICTORIAN WOOD AND COMPOSITION MIRROR with a rectangular bevelled plate, bell flower and sea scroll frieze the outer border with raised decoration of flowers and leaves 50 1/2" x 60" £150 - 200

792 - A VICTORIAN BURR WALNUT VENEERED SEWING TABLE the shaped rectangular top with outset roundel corners with a frieze drawer with a sliding wool box raised upon turned vase shape columns and platform feet, 31"x22" £400 - 600



Lot 793

793 - AN ANGLO INDIAN HARDWOOD HANGING SHELF with a leafy frieze above an arrangement of shelves flanking an ornate leaf and berry carved centre 50" high x 49" x 10 1/2" £100 - 150

794 - AN EDWARDIAN INLAID MAHOGANY DRESSING TABLE with an oval bevelled mirror enclosed by tapering columns and two frieze drawers the lower part with two short and two long drawers raised upon tapering legs and casters, and with a conforming bed. £100 - 150

795 - A GEORGE III MAHOGANY BOWFRONT HANGING CORNER WALL CUPBOARD with a cavetto cornice above a pair of cupboard doors H brass hinges above a moulded plinth 43"x28" £150 - 200



Lot 800



Lot 801

796 - A VICTORIAN OVAL MAHOGANY EXTENDING DINING TABLE with a moulded border enclosing one extra leaf above a plain frieze raised upon square headed fluted vase shaped legs bell shape feet and casters 28" x 46" closed 59 1/2" extended x 47" See illustration £300 - 400

797 - A GEORGE III MAHOGANY BOW FRONT SIDEBOARD with a large frieze drawer crossbanded with rosewood inlaid with ebony and boxwood stringing above a shaped apron, the spandrels inlaid with satin and stained wood leaves and thistles flanked by two drawers raised upon tapering legs each inlaid with ovals with marquetry flowers and leaves 36" x 84" x 27" £500 - 800

798 - A SMALL VICTORIAN UPHOLSTERED OTTOMAN the hinged seat with padded roundel end shaped sides raised upon bun feet 18 1/2" x 26" x 14" £50 - 80

799 - A VICTORIAN WALNUT AND PANELLED HANGING CORNER CUPBOARD 26" x 21" £50 - 80

800 - A WILLIAM IV MAHOGANY EXTENDING DINING TABLE the rectangular top with rounded corners and a fluted frieze raised upon square headed slender sphere and vase leaf carved legs, brass shoes and ceramic casters enclosing three additional leaves, 29" high x 124" See illustration £2000 - 3000

801 - A GEORGE III MAHOGANY SERPENTINE CHEST with a moulded canted top above three drawers with moulded fronts, pierced brass handles raised upon a moulded plinth and bracket feet with restorations and alterations, 33"x45 1/2"x22 1/2" See illustration £200 - 300

802 - A GEORGE III INLAID MAHOGANY TEA TABLE the demi lune hinged top with a line inlay above a frieze inlaid with stringing raised upon four tapering legs 29" x 37" x 18 1/2" closed £100 - 150

803 - A JAPANESE VELLUM AND GILT DECORATED TRUNK the rectangular hinged cover above iron hasps, three sides overall decorated in gilt with Japanese precious objects 16" x 33 1/2" x 23" £100 - 150

804 - AN EDWARDIAN INLAID ROSEWOOD PEDESTAL DRESSING TABLE the full length bevelled mirror with a broken arched pediment flanked by two pedestals each with a short drawer and a mirror the lower part with a rectangular top enclosing four short drawers raised upon inverted brakefront plinth overall inlaid with satin and stain woods with ribbon tied flowers and leaves, 72"x57"x22¹/₂" £300 - 400

805 - A SET OF FOUR EDWARDIAN INLAID MAHOGANY DINING CHAIRS each with shaped cresting rails and later ovals above pierced splat's, padded seats raised upon inlaid tapering front legs and spade feet (4) £50 - 80

806 - AN EARLY 19TH CENTURY MAHOGANY ADJUSTABLE MUSIC TABLE the rectangular top with a moulded border with two hinged rests raised upon an octagonal brass adjustable column on a quadripartite plinth base and four compressed bun feet and casters 30¹/₂" x 36" x 18" £150 - 200

807 - A CHOICE SET OF EIGHT WILLIAM IV ROSEWOOD DINING CHAIRS each with padded scroll backs above leaf carved horizontal splat's, shaped padded seats above a bobbin and reel frieze, the square headed legs carved with flower heads, octagonal tapering front supports and peg feet, plain outset rear legs. £400 - 600

808 - AN EDWARDIAN INLAID MAHOGANY WARDROBE with an inlaid frieze above an oval bevelled full length mirror flanked by panelled cupboard doors each inlaid in satin and stained woods with a flaming touch, bow ribbon tied blooms raised upon a plinth base, 73¹/₂"x55"x19¹/₂" £80 - 150



Lot 809

809 - A GOOD VICTORIAN MAHOGANY EXTENDING DINING TABLE the rectangular top with rounded moulded corners raised upon square headed sphere and baluster vase legs, bell shape feet and brass casters enclosing three extra leaves, 30" high by 60" closed x130" See illustration £1500 - 2000

810 - AN EDWARDIAN INLAID MAHOGANY DRESSING TABLE with a dwarf back, the rectangular top above a panelled cupboard door and two long drawers raised upon tapering legs and brass casters, overall inlaid with ebony and boxwood chequering, 42" wide £80 - 150



Lot 810

811 - AN EARLY VICTORIAN MAHOGANY DRESSING STOOL with a padded seat raised upon leaf carved scrolling X form supports joined by a turned stretcher, 18"x20" requires restoration. £80 - 120

812 - A FRENCH SIDE CABINET the rectangular quarter veneered top with a gilt metal border above a foliate and leaf frieze, two panelled cupboard doors each with ebony ovals centred with a ribbon tied mask, leafy spandrels flanking a cherub, the lower part with a gilt metal frieze raised upon tapering legs and tupie feet 36" x 41¹/₂" x 16" See illustration £150 - 200

813 - AN EDWARDIAN INLAID MAHOGANY SHEET MUSIC CABINET the rectangular top inlaid with satinwood crossbanding ebony and boxwood stringing above four fall front frieze drawers each similarly inlaid above a concave shelf raised upon tapering legs, overall inlaid, 36¹/₂"x21"x15" £80 - 150

814 - A JOHN BROADWOOD & SONS UPRIGHT PIANO, MODERN, with an overstrung movement within an hardwood mahogany case, 43"x55¹/₂"x20¹/₂" complete with a piano stool, (2) See illustration £300 - 400

See illustration £300 - 400



Lot 812



Lot 814



Lot 817

815 - A PAIR OF VICTORIAN BUR WALNUT PEDESTAL CUPBOARDS each with moulded tops above panelled cupboard doors enclosing a shelf raised upon a plinth base and bracket feet, 29"x17"x14 1/2"
See illustration £150 - 200



Lot 815

817 - A WILLIAM IV ROSEWOOD ELBOW CHAIR with a waisted and scrolling padded back, outswept scrolling padded arms, loose seat cushion raised upon front vase shaped legs, plain outset rear legs and casters. *See illustration* £100 - 150



Lot 818

816 - AN EDWARDIAN INLAID ROSEWOOD MIRROR BACK CHIFFONIER SIDEBOARD with a spindle frieze above six bevelled mirrors and panels enclosing inlaid urns and flowers, the shaped top above a frieze drawer and two panelled cupboard doors flanked by niches above an open shelf joined by turned supports 78" x 51" *See illustration* £150 - 200



Lot 816

818 - A VICTORIAN MAHOGANY BOOKCASE the rectangular moulded top above two glazed cabinet doors enclosing three shelves with gilt, red tooled leather falls raised upon a plinth base and bracket feet, 47"x49"x14" *See illustration* £150 - 200

819 - A VICTORIAN CHESTERFIELD SETTEE padded back and arms, loose seat cushions raised on turned legs and casters 73" x 28" high £80-150



Lot 820



Lot 821

820 - A GEORGE I STYLE BURR WALNUT LADIES WRITING DESK the rectangular crossbanded top above a bow front hinged fall front, brass escutcheon enclosing four upright divisions, two pigeon holes and two drawers, the lower part with a frieze drawer, brass handles above a shaped apron raised upon slender cabriole legs and pad feet 38" high x 26 1/2" x 19". See illustration £200 - 300

821 - AN EDWARDIAN INLAID MAHOGANY AND SATINWOOD CROSSBANDED ENVELOPE GAMES TABLE the swivel top with four envelopes, baize lined playing surface above a frieze drawer, crossbanded with satinwood and inlaid with ebony and boxwood stringing, raised upon slender tapering legs and casters 29 1/2" x 22" x 22" See illustration £180 - 250

822 - A 19TH CENTURY OVAL MAHOGANY GATE LEG DINING TABLE with two hinged flaps above a frieze drawer inlaid with ebony stringing raised upon slender tapering legs, brass shoes and casters with satinwood ebony line inlays £150 - 200

823 - A GEORGE I STYLE WING BACK EASY CHAIR with a loose seat cushion raised upon front cabriole legs, outset rear legs 48" See illustration £150 - 200



Lot 823

824 - A GEORGE III AND LATER WALNUT AND GESSO WALL MIRROR with a moulded and inverted frieze enclosing a gilded leafy border, label verso J Gillingham, South Kensington, at the Antique Dealers Fair, Grosvenor House 1936. See illustration £150 - 200



Lot 824

825 - A GEORGE IV MAHOGANY AND EBONISED OVER MANTEL the inverted breakfront top above a panel and a reeded slip enclosing a mirror flanked by applied baluster columns, 28" x 30" £80 - 150

826 - A VICTORIAN MAHOGANY FRAMED THREE FOLD PAINTED SCREEN with lyre shaped scrolling ends each panel painted with landscapes depicting a figure standing beside a river bridge angling, a lady beside a duck pond with a thatched cottage in the distance, a waterfall, the reverse panels painted with roses 60" x 62" See illustration £300 - 400



Lot 826

827 - A VICTORIAN MAHOGANY CHEST OF DRAWERS the rectangular top above a plain frieze drawer and a panelled drawer with three long drawers beneath, rosewood and mother of pearl inlaid handles raised upon a plinth base and turned legs 45" x 55 1/2" x 23" £100 - 150

828 - A VICTORIAN ESTEY ORGAN with a shaped cresting above a spindle gallery enclosing a mirror flanked by spindle vase holders with a hinged book rest 33" keyboard above fretwork panels raised upon panelled sides and turned front columns stamped Estey Organ Co Brattleboro USA 72" x 43 1/2" x 22"

See illustration

£150 - 200



Lot 828

829 - AN ARTS AND CRAFTS OAK AND TILE BACK SIDEBOARD by W and R E Forrester

Furniture Manufacturers Dunfermline the shaped back with a frieze of tiles, blue leafy design, the rectangular top above two frieze drawers each with oval foliate handles above two panelled cupboard doors each with panels carved with stylized tulips, flowers and leaves raised upon front outset supports and block feet 49" high x 60" x 22 1/2" See illustration

£300 - 400



Lot 829

830 - AN EARLY 19TH CENTURY MAHOGANY SECRETAIRE BOOKCASE with a plain frieze above two cabinet doors, lacking glazing, enclosing three shelves, the lower part with a rectangular moulded top above a panelled frieze secretaire drawer enclosing an arrangement of three pigeon holes and flanked by six drawers above two panelled cupboard doors raised upon a plinth base, 91" x 45 1/2" x 24 1/2"

See illustration

£300 - 400



Lot 830

831 - A VICTORIAN ROSEWOOD AND INLAID CABINET the rectangular top with a dwarf back inlaid in satinwood with an urn of blooms inlaid spandrels the lower part with an inlaid frieze above a glazed and mirrored cupoard door enclosing four shelves raised upon a plinth base and bracket feet overall inlaid with boxwood stringing 43" high x 21" x 30 3/4"

See illustration

£100 - 150

832 - A VICTORIAN MAHOGANY BOOKCASE with an ovolo cornice above a plain frieze and two arched glazed cabinet doors enclosing three shelves, leaf carved corbels the lower part with a rectangular top above a frieze drawer and two panelled cupboard doors raised upon a plinth base, 80" x 43" x 15 1/4"

See illustration

£100 - 150



Lot 831



Lot 832

833 - A VICTORIAN MAHOGANY GENTLEMANS PRES CUPBOARD with a cavetto cornice above a pair of arched panelled cupboard doors, a brass rail enclosing two sliding trays the lower part with a rectangular top above two short and two long cockbeaded drawers, turnwood handles raised upon a plinth base, 84"x50"x22" ***** £200 - 300



Lot 833

834 - A GEORGE III MAHOGANY AND INLAID EXTENDING D END DINING TABLE with two D shape ends and a conforming centre table the rectangular top with two hinged leaves raised upon plain tapering and square legs overall inlaid with boxwood and ebony stringing 28" high x approx 112"x54" See illustration ***** £1000 - 1500

835 - SPARE LOT



Lot 834

836 - A GEORGE III STYLE LADIES WRITING BUREAU the rectangular crossbanded top above two cock beaded frieze drawers, pendant leafy brass handles, the hinged fall front enclosing three frieze drawers and an ink slide, the lower part with a frieze drawer raised upon slender tapering legs joined by stretchers on casters 42" high x 29" x 19" See illustration £150 - 200



Lot 836

837 - A GEORGE I STYLE BURR WALNUT AND HERRINGBONE INLAID KNEEHOLE DESK the rectangular moulded top with a broad crossbanded border, herringbone inlaid, quarter veneered above a hinged frieze drawer fitted with six pigeon holes and four drawers, the lower part with a frieze drawer and a panelled cupboard door flanked by three short drawers each with brass swan neck handles raised upon an inverted breakfront plinth and bracket feet 32" x 33 1/2" x 20" See illustration £3000 - 4000



Lot 837



Lot 840

838 - AN EARLY 20TH CENTURY DROP ARM CHESTERFIELD SETTEE padded back and arms, loose seat cushions raised upon bun feet and casters 30" high x 64" £50-80

839 - A SET OF FOUR GEORGE III MAHOGANY DINING CHAIRS each with arched cresting rails above pierced vase shape splats, padded drop in seats raised upon legs of square section (4) £100 - 150

840 - A VICTORIAN MAHOGANY AND MARBLE TOP PEDESTAL DRESSING TABLE the inverted breakfront marble top above three frieze drawers and three panelled cupboard doors raised upon a plinth base see illustration 32" x 52" x 21" £100 - 150

841 - A GEORGE III STYLE MAHOGANY WALL MIRROR with a swan neck cresting, centred with an eagle, gilt mounted slip with undercut base, 34" £50 - 80

842 - A GEORGE IV INLAID MAHOGANY TOILET MIRROR the rectangular plate enclosed by fluted uprights supported on a bowfront front base inlaid with tulip wood and stringing above three frieze drawers raised upon bracket feet, 30"x27 1/2" £100 - 150

843 - A PAIR OF VICTORIAN MAHOGANY FOOT STOOLS each of serpentine outline worked in wool with a rose pattern tapestry raised upon curvilinear legs 7 1/2"x13"x11" £80 - 150

844 - A GEORGE III MAHOGANY WINE TABLE OR CANDLE STAND the 9 1/2" diameter moulded tray top raised upon a baluster shaft, leaf carved downswept cabriole legs, scrolling foliate spandrels and pad feet, 19 1/2" See illustration £150 - 200



Lot 848



Lot 850

845 - A GEORGE III STYLE MAHOGANY WINDOW SEAT the rectangular buttoned silk padded seat raised upon four cabriole legs and pad feet, 13"x58 1/2"x13" £100 - 150

846 - AN EDWARDIAN AND ROSEWOOD INLAID CORNER CHAIR with a shaped outswept back, plain uprights, padded seat raised upon four cabriole legs £50 - 80

847 - AN EDWARDIAN MAHOGANY MAGAZINE HOLDER of upright rectangular form with a shelf above two divisions, platform feet, 34 1/2"x15" £40 - 60

848 - A GEORGE III MAHOGANY TEA TABLE the rectangular hinged top with rounded corners above a plain frieze raised upon a baluster shaft leaf carved quadripartite fluted downswept legs, brass paw feet and casters, 29 1/2"x36"x17 1/2" See illustration £180 - 250

849 - A LATE 19TH EARLY 20TH CENTURY MAHOGANY REGENCY STYLE PEDESTAL DINING TABLE the rectangular top with rounded ends raised upon two fluted and lobed supports, fluted triform downswept supports, brass paw feet and casters with one extra leaf, 31" high x 40"x84" £200 - 300



Lot 851

850 - A GEORGE IV ROSEWOOD TEA TABLE the rectangular top with rounded corners above a plain frieze raised upon an octagonal vase shape shaft above a roundel carved with leaves raised upon a quadripartite plinth base, leaf carved paw feet and castors, 29¹/₂"x36"x17¹/₂" closed. *See illustration* £400 - 600



Lot 855

851 - A GEORGE III MAHOGANY HANGING CORNER WALL CUPBOARD with a cavetto cornice above a frieze inlaid with chequered festoons inlaid with pendant bells, H brass hinges and brass escutcheon's enclosing three shelves and three spice drawers raised upon a moulded plinth, 45⁷/₈"x28"x19" deep *See illustration* £400 - 600

854 - A VICTORIAN MAHOGANY HALL STAND with a shaped cresting, with a spindle frieze and a roundel mirror flanked by eight coat hooks above a hinged glove compartment raised upon a plinth base with umbrella stands, 80"x30"

See illustration £120 - 180



Lot 853

Lot 844

855 - AN ART DECO BUR WALNUT AND INLAID CENTRE TABLE the well figured wood with an inlaid ebony and mahogany border inlaid with roundel's in exotic woods and raised upon four supports, each formed by 25 exotic wood cylindrical legs raised upon an ebonised plinth, 50³/₄"x55"x55"

See illustration £400 - 600

852 - A VICTORIAN WALNUT SIDE TABLE the rectangular moulded top with canted angles raised upon four legs of cylindrical section joined by a shelf and a spindle gallery, fluted downswept supports, 27¹/₂"x39"x18¹/₂" £80 - 120



Lot 856

853 - A GEORGE IV MAHOGANY HALL PORTERS CHAIR with a fluted concave back centred with roundel the shaped seat raised upon front sabre legs, outswept rear legs, 32" high the seat 17¹/₂" *See illustration* £100 - 150

856 - A GEORGE III MAHOGANY GATELEG DINING TABLE with two hinged leaves raised upon legs of cylindrical section, claw and ball feet, 28"x48"x59" *See illustration* £100 - 150



Lot 854



Lot 857

857 - A WILLIAM IV MAHOGANY CHEVAL MIRROR with a cavetto cornice and a dentil frieze above a full length mirror supported by fluted uprights with brass turning handles centred with a flower head raised upon moulded down swept supports, brass toes and casters see illustration 67" high x 29" £300 - 400

858 - A VICTORIAN MAHOGANY PIANO STOOL with a red velvet hinged seat the interior stamped maker JB Kramer, Liverpool No: 378 raised upon fluted tapering vase shape legs, 18"x18" £50 - 80



Lot 859

859 - A VICTORIAN EBONISED AND GILT METAL INLAID AND MOUNTED BREAKFRONT OPEN BOOKCASE the top inlaid with brass stringing above a similar frieze with an arrangement of three shelves with inlaid columns applied with figural mounts and terminals, canted angles with similar applied figures raised upon a breakfront plinth base 44"x71"x14 1/2" £400 - 600

860 - A PAIR OF WALNUT ENCLOSED CUPBOARDS the rectangular crossbanded top above two cupboard doors with strapwork hinges enclosing three frieze drawers, the shaped apron raised upon cabriole legs 27" x 29 1/2" x 19 1/2" See illustration £150 - 250

861 - A VICTORIAN MAHOGANY CHEST the rectangular top with rounded cross banded ends above two short and three long graduated drawers, well figured wood with turned wood handles, canted angles raised upon a plinth base and leaf carved peg feet 51" x 44" x 20 1/2" £150 - 200



Lot 860 (a pair)



Lot 861

862 - A RENNER EBONISED BABY GRAND IRON FRAME PIANO raised upon tapering vase shaped legs 57" wide £80-150

863 - AN EDWARDIAN MAHOGANY STANDARD LAMP the bell shaped base rising to a baluster leaf carved column 57 1/2" £80-150

864 - A REPRODUCTION COMPOSITION GILT DECORATED OVAL CHEVAL MIRROR with a leaf decorated frame, 64" £50 - 80

CARPETS

869 - A LARGE CHINESE WOOL CARPET the red ground decorated with foliate medallions approximately 130" £150-200

870 - A LARGE TURKEY CARPET 120" wide ***** £50 - 80

871 - A CHINESE CARPET, modern the cream ground with a central roundel decorated with blooms, overall decorated with panels of flowers and leaves 73"x110" approx. £50 - 80

872 - A CHINESE RUG with a quatrefoil panel decorated with peacocks and blooms, 36 1/2"x69" and a orange ground carpet embossed with leaves 29 1/2"x67" (2) £40 - 60

873 - A CHINESE RUG the red ground embossed and decorated with scaly dragons 36"x69" and a Chinese rug the grey ground embossed and decorated in colours with foliate and leafy angles 30"x66" £40 - 60

874 - A CHINESE WOOL RUG the blue ground with an oval embossed and decorated with flowers and leaves, similar border and spandrels 37"x69" and a Chinese wool rug the green ground with a central roundel with dragons, foliate border 36"x79" £40 - 60

875 - A CHINESE RUG the rich red ground embossed and decorated with an oval enclosing flowers in shades of green, red, brown 37"x79" £50 - 80

GARDEN

880 - A TUBULAR SANDSTONE URN, with a circular grindstone plinth 25". £80 - 120

882 - A STONE GRYPHON SEATED ON A SQUARE PLINTH 22" high. £40 - 60

883 - A SMALLER EXAMPLE GRYPHON seated on a plinth £30 - 50

884 - A PAIR OF STONEWARE CLASSICAL GARDEN URNS each of trumpet shape, leafy rims above lions masks, fruit and flowers raised upon a square plinth, a pair. £80 - 120

885 - STONEWARE CLASSICAL URN of trumpet form with masks and festoons of fruit and blooms, lobed surbase raised upon a square plinth, approx. 32" high £60 - 80



Lot 893

886 - A STONEWARE CLASSICAL MAIDEN scantily clad raised upon a circular plinth, 46" high with a conforming stand. £80 - 150

887 - A STONEWARE CLASSICAL MAIDEN scantily clad raised upon a square plinth 36" high with a associated plinth. £50 - 80

888 - A STONEWARE CLASSICAL FIGURE OF VENUS scantily clad standing on a shell and a oval plinth, 48" high £80 - 150

889 - A PIG AND YOUNG ORNAMENT 22" £40 - 60

890 - A PAIR OF VICTORIAN STONE CORBEL'S each tapering and carved with a classical maiden and a companion wearing a floral wreath, flowing beard, 9"x16" See illustration ***** £100 - 150

891 - A VICTORIAN STONE LION raised upon a rectangular sandstone plinth, 17"2x28" See illustration ***** £150 - 200

892 - A PAIR OF EARLY 20TH CENTURY OAK GATES 45 1/2"x59 1/2" £100 - 150

893 - A SET OF FOUR VICTORIAN STONE GATE PIER CAPITALS each in the form of a sphere on rising square bases 18" diameter. See illustration £200 - 300



Lot 890 Lot 894 Lot 891

END OF SALE

NOTES

Wright Manley

AUCTIONEERS

Established 1861

Directions to Beeston Castle Auction

Leaving the Motorway System ...

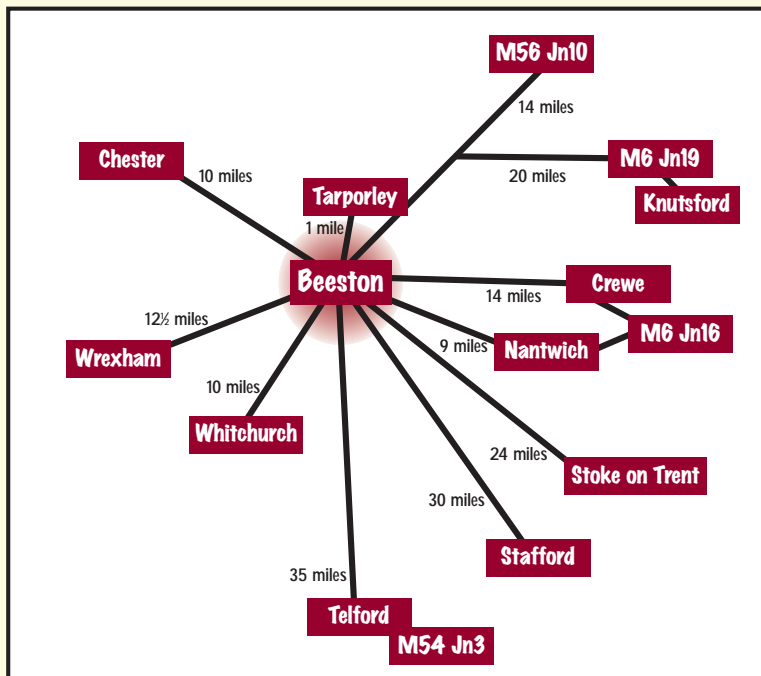
M6 Junction 16 - A500 to Nantwich then A51 Chester turning left onto A49 at Tarporley traffic lights.

M6 Junction 18 - A54 through Middlewich and Winsford until reaching junction with A49 and turning left towards Tarporley.

M6 Junction 19 - A556 through to A49 at Sandiway traffic lights turning left towards Tarporley.

M56 Junction 10 - Follow A49 South to Beeston.

M54 Junction 3 - A41 North to Whitchurch then connecting on A49 on Whitchurch By-pass towards Tarporley.



Rail Services . . .

National Rail Enquiries: 0845 7 48 49 50

Rail Europe: 0870 584 8848

Eurostar: 0870 518 6186

There are regular rail services from London Euston to Crewe and Chester

Airports . . .

Manchester: 0161 489 3000

Liverpool John Lennon: 0151 288 4000

GENERAL CONDITIONS OF SALE

1. **Definitions.** In these conditions Wright Manley, who act only as auctioneers and agents for the vendor, are called "The Auctioneers", and the representative of Wright Manley conducting the Auction is called "The Auctioneer".
2. **General.** Whilst Wright Manley make every effort to ensure the accuracy of their catalogue and the description of any lot:
 - (a) Each lot as set out in the catalogue or as divided or combined with any other lot or lots is sold by the vendor with all faults, imperfections and errors of descriptions.
 - (b) Wright Manley do not accept responsibility for the authenticity, attribution, genuineness, origin, authorship, date, age, period, condition or quality of any lot, unless they have been instructed in writing by the vendor so to certify, and in such case the Auctioneers do so as agents of the vendor and are not themselves responsible for such claims.
 - (c) All statements, whether printed in the catalogue or made orally, as to any of the matters set out in (b) above are statements of opinion only and are not to be taken as being or implying any warranties or representations of fact by Wright Manley, unless they have been instructed in writing by the vendors so to certify, and in such case the Auctioneers do so as agents of the vendor and are not themselves responsible for such claims.
 - (d) Any claim under any Statute must be received in writing by the Auctioneers within ten days of the day of the sale.
3. **The Auction**
 - (a) The Auctioneer has absolute discretion to divide any lot, to combine any two or more lots, to withdraw any lot or lots from the sale, to refuse bids, regulate bidding or cancel the sale without in any case giving any reason or without previous notice. He may bid on behalf of the vendor for all goods which are being offered subject to reserve or at the Auctioneer's discretion.
 - (b) The highest bidder shall be the buyer except in the case of a dispute. If during the auction the Auctioneer considers that a dispute has arisen, he has absolute discretion to settle it or to re-offer the lot. The Auctioneer may at his sole discretion determine the advance of bidding or refuse a bid.
 - (c) Each lot is put up for sale subject to any reserve price placed by the vendor. Where there is no reserve price (but not otherwise) the seller has the right to bid either personally or by any one person (who may be the Auctioneer).
 - (d) All conditions, notices, descriptions, statements and other matters in the catalogue and elsewhere concerning any lot are subject to any statements modifying or affecting the same made by the Auctioneer from the rostrum prior to any bid being accepted for the lot.
4. **Rescission.** Notwithstanding any other terms of these Conditions, if within fourteen days after the sale Wright Manley have received from the buyer of any lot notice in writing that in his view the lot is a deliberate forgery, and within twenty-one days after such notification the buyer returns the same to Wright Manley in the same condition as at the time of sale and by producing evidence, the burden of proof to be upon the buyer, satisfies Wright Manley that considered in the light of the entry in the catalogue the lot is a deliberate forgery,

then the sale of the lot will be rescinded and the purchase price of the same refunded. In the event of a dispute then the matter shall be settled by arbitration, the arbitrator to be nominated by the President of the Royal Institution of Chartered Surveyors. Both the buyer and the vendor agree to be bound by the decision.

5. **Default.** Wright Manley disclaim responsibility for default by either the buyer or the vendor because they act as agents for the vendor only and therefore do not pay out to the vendor until payment is received from the buyer. Instructions given by telephone are accepted at the sender's risk and must be confirmed in writing forthwith.
6. In the event of a sale by private treat both the vendor and the buyer agree to be bound by the General and any Special Conditions of Sale.

VENDORS CONDITIONS

7. **Instructions.** As Wright Manley are auctioneers, all goods delivered to Wright Manley's premises will be deemed to be delivered for sale by Auction unless otherwise stated in writing and will be catalogued and sold at Wright Manley's discretion and accepted by Wright Manley subject to all the Sale Conditions. By delivering the goods to Wright Manley for inclusion in their auction sales each vendor acknowledges that he or she has accepted and agreed to be bound by all these conditions.
8. **Collections.** Wright Manley do not themselves usually undertake the collection of goods but will, if required in writing, instruct a contractor on the vendor's behalf in their capacity as agents. Wright Manley disclaim all responsibility for loss or damage to goods or for unauthorized removal of goods and for damage to premises caused by the contractor who should be insured for such risks. Unless instructions are received to the contrary the charge for these services will be normally deducted from the proceeds of sale.
9. **Loss or Damage.** Wright Manley disclaim all responsibility for loss or damage to goods or for unauthorized removal of goods unless caused by the direct negligence of their employees.
10. **Storage.** Wright Manley reserve the right to store or arrange for the storage of goods delivered to them for sale either on their own premises or elsewhere at their sole discretion. They exempt themselves from any liability for loss or damage to goods delivered to their sale rooms without sufficient sale instructions and reserve the right to make a minimum storage charge at 25p per lot per day for such goods (unless the loss or damage is caused by the negligence of their employers).
11. **Right to Sell.** Vendors will be charged for goods left on the premises if the vendor has been requested to remove them and if the goods are not removed within twenty-one days of such request. Wright Manley reserve the right to sell the goods to defray costs and storage charges.
12. **Loss and Damages.**

Wright Manley are not regulated by the F.S.A for the provision of insurance to it's clients WRIGHT MANLEY for it's own protection covers property stored on our premises against the risk of fire, burglary and water damage. If you need to make a claim the value of your goods will be based on the lower sale estimate, if sold it is covered at the hammer price.

13. Reserves.

(a) All goods are put up for sale WITHOUT RESERVE at the Auctioneer's discretion unless written instructions as to reserves are received by Wright Manley prior to the commencement of the sale.

(b) In the event of any reserve price not being reached at auction Wright Manley are empowered to sell after the auction, by private treaty, at not less than the reserve price, as long as the goods remain on Wright Manley's premises. In the event of such a sale by private treaty the Conditions of Sale applicable to a buyer governing the auction will apply.

14. **Indemnity.** The vendor shall duly indemnify Wright Manley against any claims in connection with any goods sold by Wright Manley on the vendor's behalf.

15. **Value Added Tax.** A vendor who sends for sale by auction or private treaty any item which is an asset of his business must disclose to the Auctioneer whether or not he is a registered person for Value Added Tax purposes in the UK or any other EU country and if so, declare his registered number and whether or not he intends to operate the margin scheme for second hand goods. This information must be supplied to the Auctioneer on or prior to the items being released to the Auctioneer.

16. The vendor authorizes the Auctioneer to deduct commission and expenses at the stated rates from the hammer price and acknowledges the Auctioneer's right to retain any premium payable by the purchaser.

17. **Rights to Photographs and Illustrations.** The vendor gives Wright Manley full and absolute right to photograph and illustrate any lot placed in its hands for sale and to use such photographs and illustrations and any photographs provided by the vendor at any time at its absolute discretion (whether or not in connection with the auction).

BUYERS CONDITIONS

18. **Inspection.** Each buyer by making a bid for a lot acknowledges that he has satisfied himself fully before bidding by inspection or otherwise as to all the Sale Conditions, the physical condition of any description of the lot including but not restricted to whether the lot is damaged or has been repaired or restored.

19. **Property and Risk.** Legal title will not pass to the buyer until the lot(s) has been paid for in full and the Auctioneers shall be entitled to a lien on any lot until the purchase price (as defined in 22 below) is paid in full but each lot is at the sole risk of the buyer from the fall of the hammer. Each buyer shall forthwith give his full names and permanent address and if called upon to do so by the Auctioneer shall forthwith pay to Wright Manley such proportion of the purchase price as the Auctioneer may require. If the buyer fails to do so, the lot may at the Auctioneer's sole discretion be put up again and re-sold.

20. Every bidder shall be deemed to act as principal unless there is in force a written acknowledgement by Wright Manley that he acts as agent on behalf of a named principal.

21. Removal of Goods.

(a) No purchase shall be claimed or removed until it has been paid for and the sale has been concluded. All purchases shall be paid for and removed at the buyer's risk and expense by the end of the second working day after the sale, failing which the Auctioneer shall not be

responsible if the same are lost, stolen, damaged or destroyed, and all lots not so removed shall remain at the risk of the buyer and subject to a minimum warehousing charge of 25p per lot per day. If they are not paid for and removed within seven days of the sale the Auctioneer may re-sell them by auction or privately without notice to the buyer. Any liability which there may be on the part of the Auctioneer in respect of any loss shall be restricted to a maximum of the price paid by the buyer of the lot.

(b) In the event of any failure of the buyers to comply with any of the above conditions the damages recoverable by the seller or the Auctioneers from the defaulter shall include any loss arising on any re-sale of the lot, together with the charges and expenses in respect of both sales, and together with interest at 2% above Barclays Banks PLC Base Rate upon the price of any lot which has not been paid for within 48 hours of the sale, and any money deposited in part payment shall be held by the Auctioneers on account of any liability of the defaulter to them or to the seller. The Auctioneers are unable to accept payment from successful bidders other than in cash, credit card, debit card, or by the bidder's own cheque. Cheques drawn by third parties, whether in the Auctioneer's favour or requiring endorsement, cannot be accepted.

22. **Purchase Price.** The purchaser shall pay the hammer price together with a premium of 17.5% of the hammer price (adjusted for VAT as necessary). The premium at the appropriate rate is payable by all purchasers. The amount invoiced in respect of the premium will be inclusive of VAT but this VAT will not normally be recoverable by the buyer. The vendor authorises the Auctioneer to deduct commission and expenses at the stated rates from the hammer price and acknowledges the Auctioneer's right to retain the premium payable by the purchaser.

IMPORTANT NOTES FOR BUYERS

BIDS

We will be pleased to execute bids on behalf of intending buyers, and no charge is made for this service. Lots will be purchased as cheaply as permitted by other bids and reserves. Bids must be submitted to the Commissions Department at least one hour before the sale commences, and should be entered on the forms provided. Bids left by telephone will be accepted only on the condition that they are at the sender's risk, and must in any case be confirmed in writing.

EXPORT LICENSES

An Export Licence is required for certain items leaving the United Kingdom. The obtaining of a relevant Licence is the responsibility of the buyer.

OWNERSHIP

Lots marked with an asterisk belong to either a member of staff or a member of their family.

WRIGHT MANLEY COMPREHENSIVE COUNTRYWIDE FINE ART SERVICE

THE WRIGHT MANLEY COUNTRYWIDE SERVICE TO SOLICITORS AND EXECUTORS

Wright Manley offers a complete valuation and house clearance service, from immediate preliminary inspection – without charge – for Insurance, Probate, current Saleroom Value and Family Division to same-day removal if necessary.

Academic, rare or valuable items are retained for Wright Manley's internationally-promoted Fine Art Catalogue Sales.

SPECIALIST COLLECTORS SALES

Wright Manley hold specialist Fine Art and Collectors' Sales, Country House Sales on clients' premises and Collective Sales. Whether you have a single item or complete house contents WRIGHT MANLEY can help.

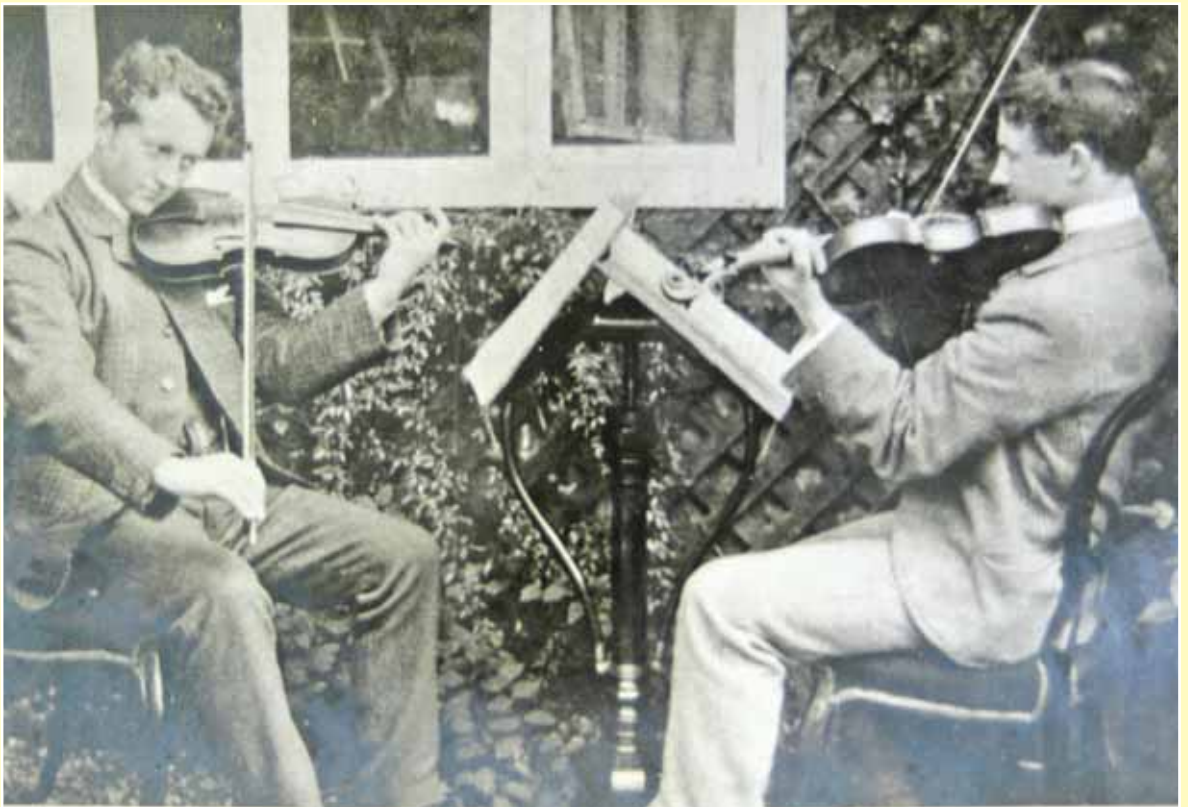


William Witter M.R.I.C.S.
BEESTON CASTLE SALEROOMS
Tarpotley, Cheshire CW6 9NZ
Tel: 01829 262150

Forthcoming Summer Sale



Please telephone Lillian Rogerson for a valuation appointment on 01829 262 150



Lot 515 - Sir Edward German

5, BIDDULPH ROAD,
ELGIN AVENUE,
W.9.
Feb 17th 1933

Dear Minnie,

Thank you so
much for the beautiful
Sandrops. (They seem
all the sweeter for
having come from
Thirubach)

I'm indeed sorry
to hear of your mother's
misadventure. She must

